



Delft University of Technology

InFocus

A spatial coding technique to mitigate misfocus in near-field LoS beamforming

Myers, Nitin Jonathan; Heath, Robert W.

DOI

[10.1109/TWC.2021.3110011](https://doi.org/10.1109/TWC.2021.3110011)

Publication date

2022

Document Version

Final published version

Published in

IEEE Transactions on Wireless Communications

Citation (APA)

Myers, N. J., & Heath, R. W. (2022). InFocus: A spatial coding technique to mitigate misfocus in near-field LoS beamforming. *IEEE Transactions on Wireless Communications*, 21(4), 2193-2209. <https://doi.org/10.1109/TWC.2021.3110011>

Important note

To cite this publication, please use the final published version (if applicable). Please check the document version above.

Copyright

Other than for strictly personal use, it is not permitted to download, forward or distribute the text or part of it, without the consent of the author(s) and/or copyright holder(s), unless the work is under an open content license such as Creative Commons.

Takedown policy

Please contact us and provide details if you believe this document breaches copyrights. We will remove access to the work immediately and investigate your claim.

Green Open Access added to TU Delft Institutional Repository

'You share, we take care!' - Taverne project

<https://www.openaccess.nl/en/you-share-we-take-care>

Otherwise as indicated in the copyright section: the publisher is the copyright holder of this work and the author uses the Dutch legislation to make this work public.

InFocus: A Spatial Coding Technique to Mitigate Misfocus in Near-Field LoS Beamforming

Nitin Jonathan Myers¹, *Member, IEEE*, and Robert W. Heath, Jr.², *Fellow, IEEE*

Abstract—Phased arrays, commonly used in IEEE 802.11ad and 5G radios, are capable of focusing radio frequency signals in a specific direction or a spatial region. Beamforming achieves such directional or spatial concentration of signals and enables phased array-based radios to achieve high data rates. Designing beams for millimeter wave and terahertz communication using massive phased arrays, however, is challenging due to hardware constraints and the wide bandwidth in these systems. For example, beams which are optimal at the center frequency may perform poor in wideband communication systems where the radio frequencies differ substantially from the center frequency. The poor performance in such systems is due to differences in the optimal beamformers corresponding to distinct radio frequencies within the wide bandwidth. Such a mismatch leads to a misfocus effect in near-field systems and the beam squint effect in far-field systems. In this paper, we investigate the misfocus effect and propose InFocus, a low complexity technique to construct beams that are well suited for massive wideband phased arrays. The beams are constructed using a carefully designed frequency modulated waveform in the spatial dimension. InFocus mitigates beam misfocus and beam squint when applied to near-field and far-field systems.

Index Terms—Near-field communication, mm-wave, terahertz, misfocus, beam squint, spatial FMCW.

I. INTRODUCTION

THE progress in circuit technology has allowed wireless communication at higher carrier frequencies where large bandwidths are available. For example, IEEE 802.11ay compliant millimeter wave (mmWave) radios operate at a carrier frequency of 60 GHz and use a bandwidth of up to 8 GHz [1]. The bandwidth of next generation terahertz (THz) radios is expected to be in the order of several hundreds of GHz to support emerging applications such as holographic projection, virtual reality, augmented reality, and chip-to-chip communication [2], [3]. Due to the small wavelengths in high

carrier frequency-based systems, it is possible to integrate large antenna arrays in compact form factors. Beamforming is an important technology in these systems that allows the use of large antenna arrays to focus radio frequency (RF) signals. A good beamforming technique results in a sufficient link margin at the receiver and high data rates.

Beamforming in near-field systems where the transceiver distance is smaller than the Fraunhofer distance [4], is different from the conventional far-field counterpart. While far-field beams focus RF signals along a direction, the near-field beams focus them in a spatial region [5]. The center of this spatial region is defined as the focal point. Near-field beamforming is useful for short range communication which is typical in data centers, wearable networks, and kiosk downloading stations. The phased array, i.e., an array of phase shifters, is a hardware architecture that is commonly used for beamforming. Similar to beam steering in a far-field system, the phased array can steer the focal point electronically in a near-field scenario [6]. In this paper, we consider a line-of-sight (LoS) scenario and study near-field beamforming with phased arrays.

Standard near-field beamforming solutions that are based on the center frequency suffer from the misfocus effect in phased arrays. In phased arrays, the phase shifts may be realized by first scaling the in-phase and the quadrature-phase signals using digitally controlled variable gain amplifiers, and then adding the scaled signals [7]. In this case, the phase shifts are constant across the entire frequency band and the resultant beamforming weights are frequency flat. In large antenna arrays that operate at high bandwidths, however, the array response varies substantially with the frequency [8]. The standard beamforming approach tunes the beamforming weights according to the array response at the center frequency. Although such an approach maximizes the signal power at the center frequency, it results in a reduced gain at frequencies that are different from this frequency [9]. The poor gain is because the focal point in standard beamforming shifts with the frequency of the RF signal. We call this the misfocus effect. Misfocus limits the effective bandwidth of the phased array and leads to poor performance in wideband systems.

A common approach to mitigate misfocus is to use true time delay (TTD)-based arrays where the delay of the RF signal can be electronically controlled at each antenna [10]. One approach to realize a TTD-based array is using the Rotman lens [11], [12]. The beamforming weight realized with such an array is frequency selective and helps achieve large gains over wide bandwidths. Unfortunately, TTD-based arrays

Manuscript received March 8, 2021; revised July 9, 2021; accepted August 29, 2021. Date of publication September 13, 2021; date of current version April 11, 2022. This work was supported in part by the National Science Foundation under Grant NSF-CNS-1702800, Grant NSF-CNS-1731658, and Grant NSF-ECCS-1711702; in part by Qualcomm Inc.; and in part by Mitsubishi Electronics Research Laboratory. The associate editor coordinating the review of this article and approving it for publication was C. Masouros. (Corresponding author: Nitin Jonathan Myers.)

Nitin Jonathan Myers is with Delft Center for Systems and Control, Delft University of Technology, 2628 Delft, The Netherlands (e-mail: n.j.myers@tudelft.nl).

Robert W. Heath, Jr., is with the Department of Electrical and Computer Engineering, North Carolina State University, Raleigh, NC 27606 USA (e-mail: rwheathjr@ncsu.edu).

Color versions of one or more figures in this article are available at <https://doi.org/10.1109/TWC.2021.3110011>.

Digital Object Identifier 10.1109/TWC.2021.3110011

result in a higher implementation cost, occupy a larger area, and require a higher power consumption than typical phase shifter-based arrays [13], [14]. Hybrid designs that combine both TTD elements and phase shifters were proposed in [15] and [16] to alleviate beam squint. Although the TDD- and the hybrid designs are interesting solutions proposed by the circuits community, the question is if it is possible to use just phase shifter-based arrays over wide bandwidths. In this paper, we answer this question by proposing a signal processing solution called InFocus to mitigate misfocus in phased arrays.

InFocus constructs beams that achieve robustness to misfocus when compared to standard beamforming. Constructing such beams, equivalently the phase shifts, is a hard problem due to hardware constraints. For example, the constant magnitude constraint on the beamforming weights is common in phase shifter-based implementations. In addition, only a discrete set of phase shifts can be applied at the antennas due to the finite resolution of phase shifters. The near-field characteristic of the channel response in short range scenarios further complicates the problem. To the best of our knowledge, prior work has not studied beamformer design for misfocus mitigation in near-field phased arrays. We would like to mention that InFocus can also be used in far-field systems for robustness to beam squint. This is because the far-field scenario is a special instance of a near-field setup where the transceiver distance is sufficiently large.

The beam squint effect in far-field phased arrays is analogous to the misfocus effect. Beam squint occurs because the beamforming direction of standard beams changes with the operating frequency [8]. As a result, it limits the effective operating bandwidth. Prior work has addressed the beam squint problem in far-field system by designing denser beamforming codebooks [13]. A semidefinite relaxation (SDR)-based beam optimization technique was proposed in [14] for far-field systems. Although the SDR-based approach in [14] can be applied for misfocus mitigation in the near-field setting, it has a high complexity when compared to our method. The technique in [14] involves convex optimization over an N^2 dimensional variable for an N element antenna array. In this paper, we consider planar arrays with $N = 10^5$ antennas. The procedure in [14] requires an unreasonably high complexity for such dimensions. Therefore, it is important to develop robust beam design techniques that are scalable to large antenna arrays.

In this paper, we develop InFocus to design misfocus robust beamformers for a short range LoS setting with a phased array-based transmitter (TX) and a single antenna receiver (RX). We summarize the main contributions of our work as follows.

- We investigate the beamforming capability of a short range LoS system which uses a circular planar phased array. Then, we determine conditions on the array size, the transceiver distance, and the bandwidth for which standard beamforming results in a misfocus effect.
- We construct a spatial phase modulation function to mitigate the misfocus effect for receivers on the boresight of the transmit array. Our construction uses a spatial frequency modulated continuous waveform (FMCW) chirp

along the radial dimension of the transmit array. We show how the parameters of this chirp can be derived from the array geometry and the operating bandwidth.

- For receivers that are not on the boresight of the TX array, we design a new phase modulation function to mitigate misfocus. The designed function has a non-linear frequency modulation profile which is determined using the stationary phase method.
- We evaluate the performance with InFocus-based beams and compare it with the standard beamforming method. Our results indicate that the beams designed with our approach result in a large and approximately flat beamforming gain over a wide bandwidth, and enable massive phased arrays to achieve a higher data rate than comparable techniques.

InFocus does not require any iterative optimization and has a low complexity than the approach in [14]. The beamformers derived in this paper are a function of the operating bandwidth and achieve a different objective than the spatial chirp-based beamformers in [17] and [18]. The designs in [17], [18] broaden a beam in a far-field narrowband setup and are based on an empirical approach. In this paper, we address a different problem than [17], [18] and mathematically prove that the use of spatial chirps mitigates misfocus or beam squint.

We assume that the location of the RX is known at the TX and focus on the misfocus robust transmit beam alignment problem. This location information may be available through near-field channel estimation or localization algorithms [19], [20]. We do not model any reflections in the propagation environment. Extending our method to richer propagation scenarios is left for future work. An implementation of our technique is available on our github page [21].

The rest of the paper is organized as follows. In Section II, we describe the system and channel model in a phased array-based system. We discuss near-field beamforming in Section III and the misfocus effect in Section IV. Section V is the main technical section of the paper, where we explain the InFocus technique. We describe our FMCW chirp-based design and the use of the stationary phase method in Section V. Simulation results are presented in Section VI before the conclusions in Section VII.

II. SYSTEM AND CHANNEL MODEL

We consider a wireless system operating over a bandwidth of B around a carrier frequency of f_c . The wavelength at this carrier frequency is $\lambda_c = c/f_c$ where c is the speed of light. We consider a circular planar antenna array of radius R at the transmitter (TX) as shown in Fig. 1a. The TX array lies in the xy plane and has N_{tx} isotropic antennas. We define Δ as the spacing between successive antenna elements along the x and y dimensions. The coordinate corresponding to the center of the TX array is defined as the origin $(0, 0, 0)$. The set of 2D coordinates associated with the antennas in the array is defined as \mathcal{S}_D . The set \mathcal{S}_D has N_{tx} coordinates that satisfy $x^2 + y^2 \leq R^2$ and $z = 0$. The RF front end at the TX is comprised of a single RF chain and a network of N_{tx} phase shifters. By configuring the phase shifters in the phased array,

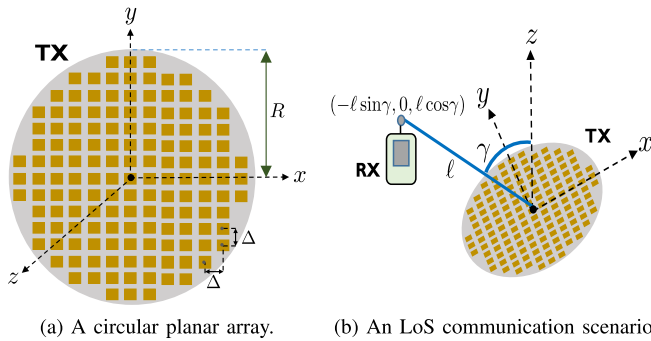


Fig. 1. The figure shows an LoS communication system with a 2D-circular planar array of radius R at the TX and a single antenna RX. We assume that the TX and the RX lie on the xy and xz planes. The line joining the center of the TX and the RX is of length ℓ . This line makes an angle γ with the boresight direction, i.e., the z -axis.

the TX can direct its RF signals to maximize signal power at the RX.

We consider a single antenna receiver in an LoS scenario and focus on the transmit beamforming problem. We assume that the RX is at a distance of ℓ from the center of the TX array. The ray joining the origin and the RX makes an angle γ with the normal to the transmit array, as shown in Fig. 1b. We also assume that the RX lies in the xz plane without loss of generality. Such an assumption is reasonable due to the “symmetric” nature of the circular transmit array. The location of the RX is then $(-\ell \sin \gamma, 0, \ell \cos \gamma)$. An LoS system is considered as near-field if the transceiver distance is smaller than the Fraunhofer distance, i.e., $d \ll 8R^2/\lambda_c$ [4]. Communication in the near-field regime is common in short range applications which use large antenna arrays and high carrier frequencies. One such application empowered by IEEE 802.15.3d [22] is kiosk downloading in the terahertz band where the transceiver distance is within 50 cm [23]. This distance can be smaller than the far-field limit of large phased arrays which operate at high carrier frequencies. For example, a $10 \text{ cm} \times 10 \text{ cm}$ antenna array in a 60 GHz kiosk results in a Fraunhofer distance of 400 cm. Prior work on reflectarrays has experimentally demonstrated such an antenna array with 25600 elements for near-field beamforming [6]. In this paper, we design beams to enable efficient wideband communication in such near-field systems.

We explain the wideband multiple-input single-output channel for the near-field LoS system shown in Fig. 1b. We use $h(x, y, f)$ to denote the channel between the TX antenna at $(x, y) \in \mathcal{S}_D$ and the receive antenna for a frequency of f . The distance between these antennas is defined as

$$\ell(x, y) = \sqrt{(x + \ell \sin \gamma)^2 + y^2 + \ell^2 \cos^2 \gamma}. \quad (1)$$

For the LoS setting in Fig. 1b, $h(x, y, f)$ can be expressed as [24]

$$h(x, y, f) = \frac{c}{2\pi f \ell(x, y)} e^{-j2\pi f \ell(x, y)/c}, \quad (2)$$

where $j = \sqrt{-1}$. The channel model in (2) does not account for reflections or scattering in the propagation environment. Furthermore, the model ignores frequency dependent

atmospheric absorption effects [25]. These assumptions simplify the robust beamforming problem and lead to a closed form expression for the beamforming weights.

We now discuss transmit beamforming in a short range LoS system. With the phased array architecture, the TX can control the RF signal transmitted from an antenna using a beamforming weight. We use $w(x, y)$ to denote the beamforming weight applied to the TX antenna at $(x, y) \in \mathcal{S}_D$. The N_{tx} RF signals transmitted by the TX sum at the RX. In this case, we define $g(f)$ as the equivalent frequency domain single-input single-output (SISO) channel between the TX and the RX. The equivalent channel at frequency f is given by

$$g(f) = \sum_{(x, y) \in \mathcal{S}_D} w(x, y) h(x, y, f). \quad (3)$$

We assume that the TX can only change the phase of the RF signals at the antenna. For a phase shift of $\phi(x, y)$, the beamforming weight with appropriate power normalization is

$$w(x, y) = \frac{e^{j\phi(x, y)}}{\sqrt{N_{\text{tx}}}}. \quad (4)$$

The phase profile used by the TX is $\{\phi(x, y)\}_{(x, y) \in \mathcal{S}_D}$ and the corresponding beamformer is $\{w(x, y)\}_{(x, y) \in \mathcal{S}_D}$. Practical phased arrays only allow a coarse phase control of the RF signal due to the finite resolution of the phase shifters. In this paper, we first consider fine phase control to design phase profiles that result in misfocus robust beams. Then, the designed phase profiles are quantized according to the resolution of the phase shifters and applied at the TX.

An ideal beamformer, equivalently the phase profile, is one that maximizes $|g(f)|$ at all frequencies within the desired bandwidth. Such a beamformer must be frequency selective as the channel in (2) varies with the frequency. Unfortunately, the frequency independent constraint on $w(x, y)$ which is common in phase shifter-based arrays [7], [26], does not allow the application of the ideal beamformer [27]. Frequency selective beamforming can be achieved with true time delay-based beamforming architectures [28]–[30]. Although TTD-based arrays are robust to misfocus and beam squint, they require a higher implementation complexity than traditional phase shifter-based arrays [31]. Furthermore, TTD elements also result in a higher power consumption [15] and a higher insertion loss than phase shifters [13]. In this paper, we focus on phase shifter-based arrays and construct new beams that achieve robustness to misfocus and beam squint.

Our design ignores the orientation of the receive antenna and assumes that the transmit and receive antennas are co-polarized. Although such an assumption is made for simplicity of exposition, our solution can be applied in practical settings. In dual polarization beamforming systems, the misfocus robust beams derived in this paper can be used along both the horizontal and vertical polarization dimensions. Another approach to mitigate orientation mismatch is by using dynamic polarization control devices at the TX or the RX [32]. These devices can electronically change the polarization angle of the transmitted or the received signal, and allow applying

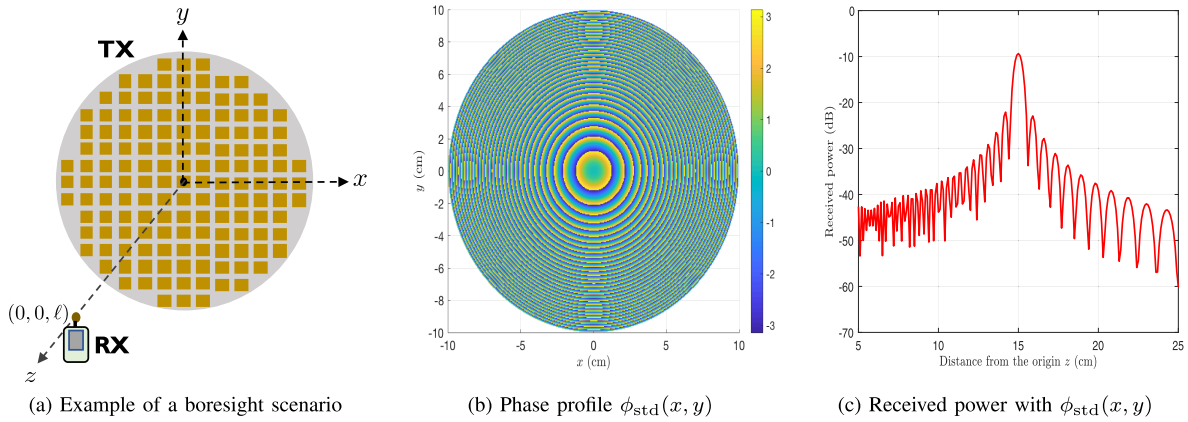


Fig. 2. We consider a boresight scenario with a half-wavelength spaced array at the TX. Here, $f_c = 300$ GHz, $R = 10$ cm, $\Delta = \lambda_c/2$ and $\ell = 15$ cm. The phase profile in standard beamforming is shown in Fig. 2b. When this profile is applied at the TX, the RF signals are spatially concentrated around the RX at 15 cm as shown in Fig. 2c.

the proposed beamforming solutions even under an orientation mismatch.

III. BEAMFORMING IN NEAR-FIELD SYSTEMS DEMYSTIFIED

In this section, we explain the phase profiles for near-field beamforming at the center frequency. We also approximate the discrete sum associated with $g(f)$ in (3) to an integral. In Section V, we use this approximation for a tractable design of the misfocus robust beamformers.

The goal of beamforming is to adjust the phase shifts $\{\phi(x,y)\}_{(x,y) \in \mathcal{S}_D}$ to maximize the received power. Standard beamforming adjusts the phase shifts to maximize $|g(f_c)|^2$, i.e., the energy of the equivalent channel response at the center frequency f_c . We define these phase shifts as $\{\phi_{\text{std}}(x,y)\}_{(x,y) \in \mathcal{S}_D}$. The phase profile $\phi_{\text{std}}(x,y)$ corresponding to the channel in (2) is

$$\phi_{\text{std}}(x,y) = \frac{2\pi f_c \ell(x,y)}{c}. \quad (5)$$

An example of this profile is shown in Fig. 2b for $f_c = 300$ GHz, $\gamma = 0^\circ$, $R = 10$ cm and $\ell = 15$ cm. The hyperbolic structure of such a phase profile allows near-field systems to focus signals in a spatial region [5]. To illustrate the spatial focusing effect, we evaluate the received power along the z axis when the TX directs its signal to an RX at $(0,0,15)$ cm. We observe from Fig. 2c that the received power is concentrated in a small region of 1 cm around the RX.

Now, we approximate the discrete sum in $g(f)$ to an integral. The approximation considers an imaginary transmitter (ITX) with a continuous aperture of radius R . The set of coordinates within this aperture is defined as

$$\mathcal{S} = \{(x,y) : x^2 + y^2 \leq R^2\}. \quad (6)$$

We observe from (6) that the ITX contains an uncountably infinite number of antennas. The concept of an ITX was discussed in [33] under the label of hologram-based beamforming. For such an ITX, we assume that a continuous phase profile $\phi(x,y)$, a 2D-function supported on \mathcal{S} , can be

applied to control the RF signals going out of the infinitesimally small antennas. In the discrete antenna setting with N_{tx} antennas, the energy of the beamforming weight profile in (4), i.e., $\sum_{(x,y) \in \mathcal{S}_D} |w(x,y)|^2$, is 1. Similarly, a unit energy beamforming weight profile at the ITX is defined as $w(x,y) = e^{j\phi(x,y)} / \sqrt{\pi R^2}$ for $(x,y) \in \mathcal{S}$. Note that $\int_{\mathcal{S}} |w(x,y)|^2 = 1$. The channel between the ITX and the RX is modeled using (2). Analogous to $g(f)$ in (3), the equivalent SISO channel when the ITX applies a continuous phase profile $\phi(x,y)$ is defined as

$$g_a(f) = \frac{1}{\sqrt{\pi R^2} \Delta} \int_{\mathcal{S}} h(x,y,f) e^{j\phi(x,y)} dx dy \quad (7)$$

$$= \frac{c}{2\pi^{3/2} R f \Delta} \int_{\mathcal{S}} \frac{1}{\ell(x,y)} e^{j(\phi(x,y) - \frac{2\pi f \ell(x,y)}{c})} dx dy. \quad (8)$$

The function $g_a(f)$ in (8) is interpreted as a continuous approximation of $g(f)$ in (3). Equivalently, $g(f)$ is a Riemann sum approximation of $g_a(f)$ [34]. The error in the approximation, i.e., $|g(f) - g_a(f)|$, is $\mathcal{O}(K/N_{\text{tx}}^{3/2})$ where K is an upper bound on the second order partial derivatives of $h(x,y,f) e^{j\phi(x,y)}$ along the x and y dimensions.

The approximate SISO channel $g_a(f)$ is just a mathematical concept which aids robust beamformer design, and the model in (7) may not be relevant in practical systems due to several constraints. First, it remains unclear how phase control at an infinitesimal level can be implemented using known RF components. Second, the design of a digital interface to control the aperture is challenging. Although holographic or metasurface beamforming mark a step towards such continuous aperture arrays, these technologies are still based on discrete components. It is important to note that the notion of ITX in our problem is adopted because integrals are easy to deal with than discrete summations. The idea underlying the beamformer design technique in this paper is to first design a continuous phase profile $\phi(x,y)$ that achieves robustness to beam misfocus. Then, the phase profile is sampled at the coordinates in \mathcal{S}_D for use in a practical system with N_{tx} antennas. The simulation results discussed in this paper are for the discrete antenna-based TX, while our analysis is for the ITX which has a continuum of antennas.

IV. BEAM MISFOCUS EFFECT: HOW MUCH BANDWIDTH IS TOO MUCH?

In this section, we investigate the performance of the standard beamforming method when the receiver is along the boresight of the transmit array, i.e., $\gamma = 0^\circ$. We explain how such a technique suffers from the beam misfocus effect in near-field wideband systems.

We now consider the system in Fig. 2a where the RX is along the z -axis and study beamforming with the phase profile in (5). For such a phase profile, we define $g_{a,\text{std}}(f)$ as the equivalent SISO channel between the ITX and the RX. We substitute $\phi(x, y) = \phi_{\text{std}}(x, y)$ in (8) to write

$$g_{a,\text{std}}(f) = \frac{c}{2\pi^{3/2}Rf\Delta} \int_S \frac{1}{\ell(x, y)} e^{-j\frac{2\pi(f-f_c)\ell(x, y)}{c}} dx dy. \quad (9)$$

Setting $\gamma = 0^\circ$ in (1), we observe that $\ell(x, y) = \sqrt{x^2 + y^2 + \ell^2}$ for a boresight scenario. We define $r = \sqrt{x^2 + y^2}$ and $\theta = \tan^{-1}(y/x)$, i.e., the polar coordinates associated with (x, y) , to rewrite the integral in (9) as

$$g_{a,\text{std}}(f) = \frac{c}{2\pi^{3/2}Rf\Delta} \times \int_{r=0}^R \int_{\theta=0}^{2\pi} \frac{1}{\sqrt{r^2 + \ell^2}} e^{-j\frac{2\pi(f-f_c)\sqrt{r^2 + \ell^2}}{c}} r dr d\theta. \quad (10)$$

We define the spatial frequency, with units of radians/m, as

$$\omega = 2\pi(f - f_c)/c, \quad (11)$$

and the length

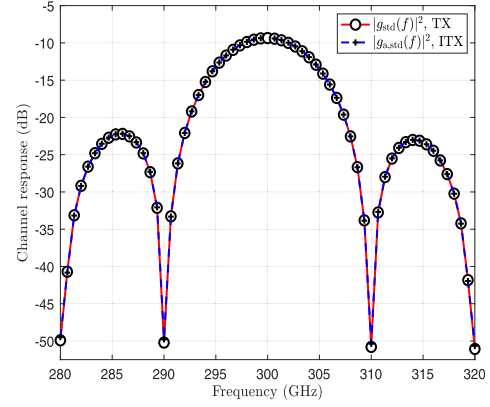
$$d_{\text{avg}} = (\ell + \sqrt{\ell^2 + R^2})/2. \quad (12)$$

We observe that $\omega \in [-\pi B/c, \pi B/c]$ for $f \in [f_c - B/2, f_c + B/2]$. A closed form expression for the equivalent SISO channel is derived in Appendix-A. We define $\text{sinc}(x) = \sin x/x$ and write $g_{a,\text{std}}(f)$ in compact form as

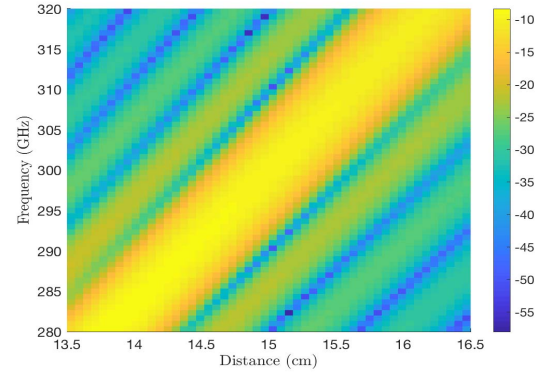
$$g_{a,\text{std}}(f) = \frac{2c(d_{\text{avg}} - \ell)e^{-j\omega d_{\text{avg}}}}{\sqrt{\pi}Rf\Delta} \times \text{sinc}(\omega(d_{\text{avg}} - \ell)). \quad (13)$$

The equivalent SISO channel $g_{a,\text{std}}(f)$ in (13) is a product of two terms which are frequency dependent.

For wideband systems in the near-field, the energy of the equivalent channel between the ITX and the RX, i.e., $|g_{a,\text{std}}(f)|^2$, varies substantially with the frequency. To illustrate this variation, we consider a boresight scenario with $\Delta = \lambda_c/2$, $R = 10$ cm, $\ell = 15$ cm and $f_c = 300$ GHz. In Fig. 3a, we show the energy in the channel response, i.e., $|g_{a,\text{std}}(f)|^2$. We also show its discrete antenna counterpart defined as $|g_{\text{std}}(f)|^2$. Here, $g_{\text{std}}(f)$ is the equivalent SISO channel between the discrete antenna TX and the RX, and is obtained by setting $w(x, y) = e^{j\phi_{\text{std}}(x, y)}/\sqrt{N_{\text{tx}}}$ in (3). We notice from Fig. 3a that the normalized channel response with standard beamforming achieves its maximum at the center frequency. The gain at 310 GHz, however, is about 41 dB lower than the maximum. The poor gain at frequencies that are far away from the center frequency is a disadvantage with standard beamforming in phase shifter-based arrays.



(a) Channel response at the RX for $\phi_{\text{std}}(x, y)$.



(b) Received power (dB) with $\phi_{\text{std}}(x, y)$.

Fig. 3. For the system in Fig. 2a, we observe from Fig. 3a that the equivalent SISO channel with the standard beam has a low gain for $|f - f_c| > 10$ GHz. Here, $f_c = 300$ GHz, $\Delta = 0.5$ mm, $R = 10$ cm and $\ell = 15$ cm. Fig 3b shows that the focus point changes with the frequency of operation when the TX applies $\phi_{\text{std}}(x, y)$ to its array.

The poor gain with standard beamforming in near-field wideband systems can be explained by the misfocus effect. An ideal beamformer is one that focuses RF signals with frequencies in $[f_c - B/2, f_c + B/2]$ at the desired receiver. The focus point of the standard beamformer, however, changes with the frequency leading to the beam misfocus effect. From Fig. 3b, the focus point is closer to the TX for $f < f_c$ and is away from the TX for $f > f_c$. Such an effect is analogous to chromatic aberration in optics where light rays of different wavelengths focus at different points [35]. Due to the misfocus effect, the receiver can only listen to signals within a small bandwidth around the center frequency. But, how small is this bandwidth? To answer the question, we consider the two terms in (13) whose product is the equivalent channel $g_{a,\text{std}}$. The first term in the product is inversely proportional to the frequency. The second term, which depends on the frequency through ω , leads to a substantial decrease in the beamforming gain. For the system parameters in Fig. 3a, we compute the first and second terms in (13). These terms contribute to a beamforming loss of 0.3 dB and 41 dB at 310 GHz, when compared to $|g(f_c)|^2$. The condition for which the loss due to the second term is less than 4 dB is expressed as

$$\left| \frac{\omega(\sqrt{\ell^2 + R^2} - \ell)}{2} \right| < \frac{\pi}{2}. \quad (14)$$

We use $|\omega| \leq \pi B/c$ in (14) to conclude that the receiver observes “all” the RF signals when

$$B < \frac{c}{\sqrt{\ell^2 + R^2} - \ell}. \quad (15)$$

It follows from (15) that the effective operating bandwidth with standard beamforming decreases as the TX antenna aperture radius R increases.

The far-field analogue of misfocus is the beam squint effect in which the direction of the beam changes with the frequency of the RF signal. Interestingly, far-field beams that are directed along the boresight of an array do not suffer from the squint [13]. Near-field beamforming with the standard design, however, suffers from misfocus even in a boresight scenario as seen in Fig. 3b. One approach to mitigate misfocus is to reduce the effective aperture of the TX array by turning off the antennas which are far from the TX center. The resultant array with fewer active antennas is called a thinned array. It can be observed from (15) that a smaller R results in a larger effective operating bandwidth. Reducing the aperture, however, results in lower received power under the typical per-antenna power constraint. In this paper, we design new beams that mitigate the misfocus effect without turning off any antenna.

The ideal misfocus robust phase profile can be expressed as

$$\phi_{\text{opt}} = \underset{\phi}{\operatorname{argmax}} \{ \underset{f}{\min} |g(f)|^2 \}, \quad (16)$$

where $g(f)$ implicitly depends on ϕ through (3) and (4). The problem in (16) is non-convex, and finding the optimal solution to (16) is hard. As a result, it is difficult to express robustness to misfocus as the gap from the optimum. The problem in (16) can be transformed into a convex program using the SDR method in [14]. The complexity of the SDR technique, however, is $\mathcal{O}(N_{\text{tx}}^3)$, due to the eigen-value decomposition step of an $N_{\text{tx}} \times N_{\text{tx}}$ matrix in each iteration. It may be argued that the phase profiles can be precomputed offline and stored for real-time beamforming. Unfortunately, the storage complexity is extremely large in the near-field regime (than the common far-field scenario). This is because near-field beams vary with the 3D location of the receiver, unlike far-field beams which are invariant to distance along a particular direction.

In this paper, we assume an LoS scenario and derive a closed form expression on the phase profile to mitigate the misfocus effect. Due to the closed form nature of the phase profiles, the computational complexity of our approach is $\mathcal{O}(N_{\text{tx}})$. We would like to mention that the proposed beams achieve close to uniform beamforming gain over wide bandwidths. This gain, however, is smaller than the maximum gain with the standard beamformer, i.e., $|g_{\text{a, std}}(f_c)|^2$. In Section VI, we show that the beams with InFocus lead to a higher rate than the standard design.

V. MISFOCUS ROBUST BEAMFORMING WITH INFOCUS

The key idea underlying InFocus is to add a carefully designed phase profile to that of the standard beamformer for robustness to misfocus. We define $\psi_{\text{des}}(x, y)$ as the phase

profile added to $\phi_{\text{std}}(x, y)$. The resultant phase applied at the TX is

$$\phi(x, y) = \phi_{\text{std}}(x, y) + \psi_{\text{des}}(x, y), \quad (17)$$

where $\phi_{\text{std}}(x, y) = 2\pi f_c \ell(x, y)/c$. We consider the continuous aperture system with an ITX to design $\psi_{\text{des}}(x, y)$. Substituting $\phi(x, y) = 2\pi f_c \ell(x, y)/c + \psi_{\text{des}}(x, y)$ in (8), the equivalent SISO channel for this system can be expressed as

$$\begin{aligned} g_{\text{a}}(f) &= \frac{c}{2\pi^{3/2} R f \Delta} \int_{\mathcal{S}} \frac{1}{\ell(x, y)} e^{j\psi_{\text{des}}(x, y)} \\ &\quad \times e^{-j\frac{2\pi(f-f_c)\ell(x, y)}{c}} dx dy \\ &= \frac{c}{2\pi^{3/2} R f \Delta} \int_{\mathcal{S}} \frac{1}{\ell(x, y)} e^{j\psi_{\text{des}}(x, y)} e^{-j\omega\ell(x, y)} dx dy. \end{aligned} \quad (18)$$

The question at this point is if it is possible to determine a 2D-phase function $\psi_{\text{des}}(x, y)$ that results in a “uniform” beamforming gain for $f \in [f_c - B/2, f_c + B/2]$.

For a tractable design of the phase profile, we ignore the $1/f$ scaling in (19) and define

$$\tilde{g}(f) = \int_{\mathcal{S}} \frac{1}{2\pi\ell(x, y)} e^{j\psi_{\text{des}}(x, y)} e^{-j\omega\ell(x, y)} dx dy. \quad (20)$$

We observe that $g_{\text{a}}(f) = c\tilde{g}(f)/(\sqrt{\pi}Rf\Delta)$. InFocus constructs $\psi_{\text{des}}(x, y)$ such that $|\tilde{g}(f)|^2$ is large and approximately flat over the desired bandwidth. Our design ignores the $1/f$ term in $g_{\text{a}}(f)$ as it leads to a smaller variation in $|g_{\text{a}}(f)|^2$ when compared to the integral in (19). For example, the variation in $|g_{\text{a}}(f)|^2$ due to the $1/f$ term is $20 \log_{10}(320/280) \approx 1.2$ dB for a 40 GHz system at 300 GHz. The variation in $|g_{\text{a}}(f)|^2$ due to $\tilde{g}(f)$, however, is about 40 dB with the standard design where $\psi_{\text{des}}(x, y) = 0$. In Section V-A, we first explain the construction of $\psi_{\text{des}}(x, y)$ for misfocus robust beamforming in a boresight scenario. Then, we extend our solution to a general setting in Section V-B.

A. Beamforming Along the Boresight

We simplify $\tilde{g}(f)$, the scaled version of the equivalent SISO channel $g_{\text{a}}(f)$ when $\gamma = 0^\circ$. In the polar coordinate representation, $\ell(x, y) = \sqrt{r^2 + \ell^2}$ when $\gamma = 0^\circ$. Furthermore, $\psi_{\text{des}}(x, y)$ can be expressed as $\psi_{\text{des}}(r \cos \theta, r \sin \theta)$. Then, $\tilde{g}(f)$ in (20) is

$$\tilde{g}(f) = \int_{r=0}^R \int_{\theta=0}^{2\pi} \frac{e^{j\psi_{\text{des}}(r \cos \theta, r \sin \theta)}}{2\pi\sqrt{r^2 + \ell^2}} e^{-j\omega\sqrt{r^2 + \ell^2}} r dr d\theta. \quad (21)$$

We define

$$s = \sqrt{r^2 + \ell^2}. \quad (22)$$

In this case, $ds = r dr / \sqrt{r^2 + \ell^2}$ and (21) can be simplified to

$$\tilde{g}(f) = \int_{s=\ell}^{\sqrt{\ell^2 + R^2}} \frac{1}{2\pi} \int_{\theta=0}^{2\pi} e^{j\psi_{\text{des}}(r \cos \theta, r \sin \theta)} e^{-j\omega s} ds d\theta. \quad (23)$$

Due to the radial symmetry in the boresight scenario, it is reasonable to design a $\psi_{\text{des}}(r \cos \theta, r \sin \theta)$ that varies only with r and is independent of the angle θ . As $s = \sqrt{r^2 + \ell^2}$ is directly related to r , we model the variation in

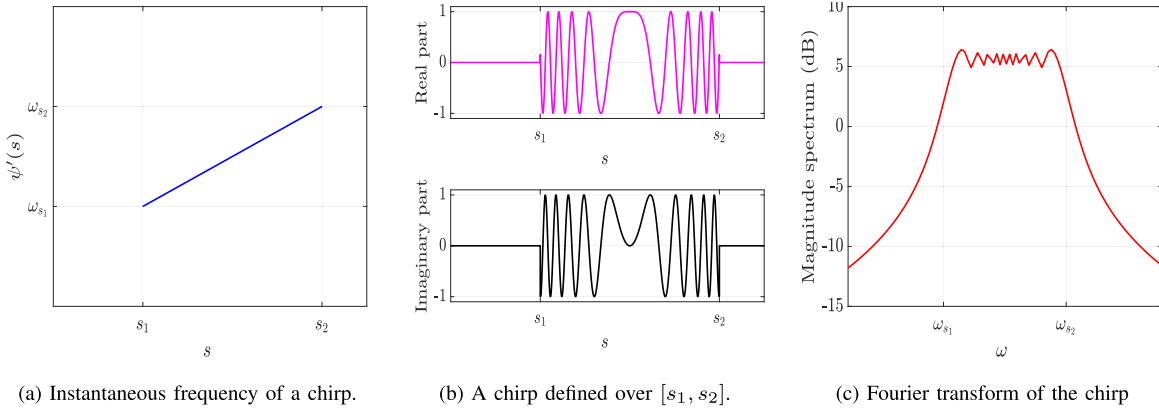


Fig. 4. The instantaneous frequency of a chirp over $s \in [s_1, s_2]$ varies linearly with s as shown in Fig. 4a. Here, the start and end frequencies are ω_{s_1} and ω_{s_2} . In Fig. 4b, we show the real and imaginary components of the chirp signal. The frequency spectrum of this chirp is concentrated within $[\omega_{s_1}, \omega_{s_2}]$ and is approximately flat in this band.

$\psi_{\text{des}}(r \cos \theta, r \sin \theta)$ through a 1D-function $\psi(s) = \psi_{\text{des}}(r \cos \theta, r \sin \theta)$ where $r = \sqrt{s^2 - \ell^2}$. With this definition, we rewrite (23) as

$$\tilde{g}(f) = \int_{\ell}^{\sqrt{\ell^2 + R^2}} e^{j\psi(s)} e^{-j\omega s} ds. \quad (24)$$

The problem now is to design a 1D-function $\psi(s)$ for robustness to misfocus.

We investigate the design of the phase function $\psi(s)$ to achieve a large and approximately flat $|\tilde{g}(f)|^2$ over the desired frequency range $[f_c - B/2, f_c + B/2]$. As $f = f_c + c\omega/(2\pi)$, this requirement on $|\tilde{g}(f)|^2$ is equivalent to a uniform gain over $|\tilde{g}(f_c + c\omega/(2\pi))|^2$ for $\omega \in [-\pi B/c, \pi B/c]$. For ease of notation, we define $\hat{g}(\omega) = \tilde{g}(f_c + c\omega/(2\pi))$, $d_{\text{max}} = \sqrt{\ell^2 + R^2}$, and $\mathbb{I}_{\ell, d_{\text{max}}}(s)$ as an indicator function which is 1 for $s \in [\ell, d_{\text{max}}]$. Now, $\hat{g}(\omega)$ is

$$\hat{g}(\omega) = \int_{\ell}^{\sqrt{\ell^2 + R^2}} e^{j\psi(s)} e^{-j\omega s} ds \quad (25)$$

$$= \int_{-\infty}^{\infty} e^{j\psi(s)} \mathbb{I}_{\ell, d_{\text{max}}}(s) e^{-j\omega s} ds. \quad (26)$$

An interesting observation from (26) is that $\hat{g}(\omega)$ is the Fourier transform of $e^{j\psi(s)} \mathbb{I}_{\ell, d_{\text{max}}}(s)$. Now, is it possible to design $\psi(s)$ such that $e^{j\psi(s)} \mathbb{I}_{\ell, d_{\text{max}}}(s)$ has a constant magnitude Fourier transform over $\omega \in [-\pi B/c, \pi B/c]$? No, because signals that are localized in the s -domain cannot be localized in the Fourier representation [36]. For example, a rectangular function which is localized in the s -domain has a sinc representation in the Fourier domain which is spread over all frequencies. As a compromise, we seek to construct $\psi(s)$ such that $|\hat{g}(\omega)|^2$ has a high spectral concentration in $[-\pi B/c, \pi B/c]$ and is approximately uniform over this band.

We explain why the peak beamforming gain, i.e., $\max_f |g(f)|^2$, with InFocus is smaller than standard beamforming. By definition, $\max_f |g(f)|^2$ is proportional to $\max_{\omega} |\hat{g}(\omega)|^2$. Now, we observe that the s -domain signal $e^{j\psi(s)} \mathbb{I}_{\ell, d_{\text{max}}}$ in (25) has a fixed energy of $d_{\text{max}} - \ell$, for any phase profile $\psi(s)$. By Parseval's theorem, this energy is equal to $\int_{-\infty}^{\infty} (|\hat{g}(\omega)|^2 d\omega) / 2\pi$. Standard beamforming uses

$\psi(s) = 0$ such that $|\hat{g}(\omega)|$ is maximized at $\omega = 0$. InFocus constructs $\psi(s)$ such that the same energy of $d_{\text{max}} - \ell$ is distributed “uniformly” over $\omega \in [-\pi B/c, \pi B/c]$. Such a distribution reduces the peak beamforming gain compared to the standard design. The reduced peak gain is due to the frequency flat antenna weights in a phased array, and the only way to preserve this gain over the entire bandwidth is to use a TTD-based array.

Now, we discuss a linear FMCW chirp in the s -domain and explain why it is a good candidate for $e^{j\psi(s)} \mathbb{I}_{\ell, d_{\text{max}}}(s)$. A linear FMCW chirp which starts from s_1 and ends at $s_2 > s_1$ is a complex exponential signal whose instantaneous frequency linearly increases with $s \in [s_1, s_2]$. In this paper, we use an FMCW chirp along the spatial dimension, different from the common application along the time dimension. The chirp signal has the form $e^{j\psi(s)}$ for $s \in [s_1, s_2]$ and is 0 otherwise. The instantaneous frequency of the chirp signal is defined as $\psi'(s)$, the derivative of $\psi(s)$, where

$$\psi'(s) = \frac{d\psi(s)}{ds}. \quad (27)$$

We define $\omega_{s_1} = \psi'(s_1)$ and $\omega_{s_2} = \psi'(s_2)$ as the start and end frequencies of the chirp. The linear variation in the frequency profile is shown in Fig. 4a. Prior work in radar has shown that the Fourier transform magnitude of a chirp is approximately flat over $[\omega_{s_1}, \omega_{s_2}]$ and is nearly zero outside this band. A closed form expression for the spectral magnitude of a chirp can be found in [37]. It was shown in [37] that the spectral leakage outside $[\omega_{s_1}, \omega_{s_2}]$ is less than 5% of the energy of the chirp when $(\omega_{s_2} - \omega_{s_1})(s_2 - s_1) > 20\pi$. The product $(\omega_{s_2} - \omega_{s_1})(s_2 - s_1)$ is called the dispersion factor of the chirp. Examples illustrating a chirp and its spectrum are shown in Fig. 4b and Fig. 4c. The “uniform” spectral characteristic of a chirp within a band can be exploited to construct an appropriate $\psi(s)$ for misfocus robust beamforming.

We derive $\psi(s)$ using the properties of a linear FMCW chirp. First, we observe from (25) that the chirp to be designed must start at $s_1 = \ell$ and end at $s_2 = \sqrt{\ell^2 + R^2}$. Second, as the spectrum of this chirp must be concentrated in $[-\pi B/c, \pi B/c]$ for misfocus robust beamforming, we require $\omega_{s_1} = -\pi B/c$

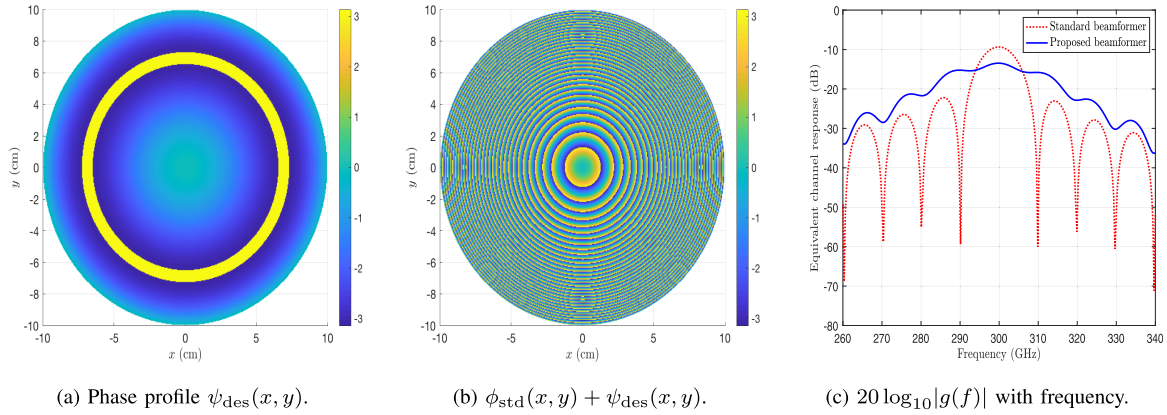


Fig. 5. We consider a boresight scenario with $f_c = 300$ GHz, $\ell = 15$ cm, $R = 10$ cm and $B = 40$ GHz. Fig. 5a shows the chirp-based phase profile constructed with InFocus. For $\Delta = 0.5$ mm, the proposed phase profile applied at the TX is shown in Fig. 5b. The equivalent SISO channel response with the proposed method is large and approximately flat over the desired bandwidth, i.e., [280 GHz, 320 GHz], when compared to standard beamforming.

and $\omega_{s_2} = \pi B/c$. Third, the phase profile of the chirp must take the form $\psi(s) = \alpha s + \beta s^2$ for some constants α and β . Such a phase variation results in a linear instantaneous frequency profile with s which leads to a “uniform” spectral characteristic over the desired band. We observe that $\psi'(s_1)$, the instantaneous frequency of the chirp at s_1 is ω_{s_1} . Similarly, $\psi'(s_2) = \omega_{s_2}$. Note that $\psi'(s) = \alpha + 2\beta s$. We put together these observations to write

$$\alpha + 2\beta\ell = \frac{-\pi B}{c} \quad \text{and} \quad (28)$$

$$\alpha + 2\beta\sqrt{\ell^2 + R^2} = \frac{\pi B}{c}. \quad (29)$$

Solving the linear equations (28) and (29), we get $\beta = \pi B/(c\sqrt{\ell^2 + R^2} - c\ell)$ and $\alpha = -\pi B(\sqrt{\ell^2 + R^2} + \ell)/(c\sqrt{\ell^2 + R^2} - c\ell)$. The proposed 1D phase function is then

$$\psi(s) = \frac{-\pi B(\sqrt{\ell^2 + R^2} + \ell)}{c(\sqrt{\ell^2 + R^2} - \ell)}s + \frac{\pi B}{c(\sqrt{\ell^2 + R^2} - \ell)}s^2. \quad (30)$$

As $s = \sqrt{x^2 + y^2 + \ell^2}$, the 2D phase profile $\psi_{\text{des}}(x, y)$ can be derived from (30) using $\psi_{\text{des}}(x, y) = \psi(\sqrt{x^2 + y^2 + \ell^2})$. The phase profile applied at the TX is $\phi(x, y) = \psi_{\text{des}}(x, y) + \phi_{\text{std}}(x, y)$.

We now explain beamforming using a discrete version of the proposed phase profile and compare the performance of our design with standard beamforming which uses $\phi_{\text{std}}(x, y)$. In Fig. 5a, we plot $\psi_{\text{des}}(x, y)$ for a near-field system with $R = 10$ cm, $f_c = 300$ GHz and $B = 40$ GHz. In this example, the RX is at a distance of $\ell = 15$ cm along the boresight of the TX array. The phase profile used at the TX, i.e., the sum of $\phi_{\text{std}}(x, y) + \psi_{\text{des}}(x, y)$, is shown in Fig. 5b. We observe from Fig. 5c that such a phase profile achieves a “uniform” gain over the desired bandwidth. The equivalent SISO channel response shown in Fig. 5c, i.e., $20 \log_{10}(|g(f)|)$, has components outside the desired frequency band. This is due to the fact that $\hat{g}(\omega)$, the Fourier transform of the chirp signal, has spectral components outside $[-\pi B/c, \pi B/c]$. The spectral leakage is determined by the dispersion factor $2\pi B(\sqrt{\ell^2 + R^2} - \ell)/c$. In this example, the dispersion factor is 25.3, which is less than 20π for 95% energy containment within the desired band. In practice, the effective channel is the

product of $g(f)$ and the Fourier transform of the pulse shaping filter. Although an appropriate pulse shaping filter can mitigate the spectral leakage in $g(f)$, it is important to design phase profiles which lead to a large $|g(f)|^2$ within the desired band. Our chirp-based construction is one solution that achieves a large gain.

The closed form nature of the proposed phase profile is favorable from an implementation perspective when compared to optimization techniques. Optimization techniques usually involve an iterative approach to solve for the N_{tx} variables $\{w(x, y)\}_{(x, y) \in \mathcal{S}_D}$ under the constraint that $|w(x, y)| = 1/\sqrt{N_{\text{tx}}}$. Such techniques, however, may result in a high complexity when applied to large antenna array systems. For example, in a half-wavelength spaced array of $R = 10$ cm that operates at 300 GHz, N_{tx} is about 125,000. InFocus is a low complexity solution that is well suited to massive phased array-based systems.

B. Beamforming at an Arbitrary Location in the Near-Field

In this section, we design misfocus robust beamformers when the RX is not along the boresight direction. We first derive the beamformer when the projection of the RX on the xy plane, defined as \mathbb{P}_{RX} , falls outside \mathcal{S} . Then, we extend our derivation to the other case.

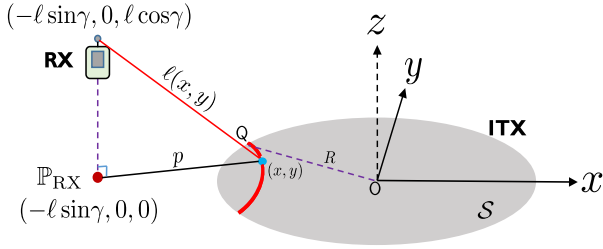
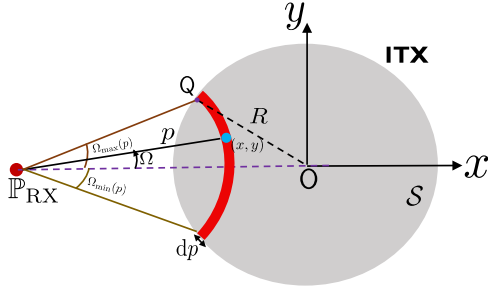
1) *Solution When $\mathbb{P}_{\text{RX}} \notin \mathcal{S}$* : We consider the near-field system in Fig. 6a where $\gamma > 0$ and $\ell \sin \gamma > R$.¹ To simplify $\tilde{g}(f)$ in (20), we use a polar coordinate system that is centered around the projection \mathbb{P}_{RX} instead of the origin O . We define p as the distance between \mathbb{P}_{RX} and a coordinate $(x, y) \in \mathcal{S}$, i.e.,

$$p = \sqrt{(x + \ell \sin \gamma)^2 + y^2}. \quad (31)$$

From the right-angled triangle formed by the RX, \mathbb{P}_{RX} and (x, y) , we observe that

$$\ell(x, y) = \sqrt{p^2 + \ell^2 \cos^2 \gamma}. \quad (32)$$

¹The robust beamformer for $\gamma < 0$ and $|\ell \sin \gamma| > R$ can be obtained by flipping the designed phase profile about the y -axis.

(a) A near-field scenario where $\mathbb{P}_{\text{RX}} \notin S$.

(b) Top view of the system in Fig. 6a.

Fig. 6. A scenario where \mathbb{P}_{RX} , the projection of the RX on the plane containing the ITX, lies outside S . Here, O represents the origin $(0, 0, 0)$ and \mathbb{P}_{RX} is $(-l \sin \gamma, 0, 0)$. The set S is a disc of radius R . In this figure, p and Ω denote the distance and the angle in a polar coordinate system centered at \mathbb{P}_{RX} .

For the standard beamformer in (5), the phase applied at (x, y) is proportional to the distance $\ell(x, y)$. Now, this distance is same for all the ITX coordinates that are equidistant from the projection \mathbb{P}_{RX} , i.e., points with the same p . A set of such coordinates is marked by an arc within the ITX in Fig. 6a. Similar to the standard phase profile $\phi_{\text{std}}(x, y)$ which has the same phase at all these locations, the phase profile $\psi_{\text{des}}(x, y)$ is assumed to be constant at all the coordinates that are equidistant from \mathbb{P}_{RX} . Such an assumption simplifies the 2D-phase profile design problem to a 1D-function optimization problem. A more sophisticated approach could optimize the 2D-phase profile directly, but we defer this to future work.

Now, we express $\tilde{g}(f)$ in (20) using the polar coordinate system centered at \mathbb{P}_{RX} . We define Ω as the angle made by the line joining (x, y) and \mathbb{P}_{RX} with the x axis. We note that $\Omega = \tan^{-1}(y/(x + l \sin \gamma))$. For the coordinates in S , the minimum and the maximum values of p are defined as $p_1 = l \sin \gamma - R$ and $p_2 = l \sin \gamma + R$. We use $\Omega_{\min}(p)$ and $\Omega_{\max}(p)$ to denote the smallest and the largest angles associated with points in S which are at a distance of p from \mathbb{P}_{RX} . These angles are measured in the anti-clockwise direction with the x -axis. To simplify $\tilde{g}(f)$, we first substitute $\ell(x, y) = \sqrt{p^2 + \ell^2 \cos^2 \gamma}$ in (20). Then, we change $dx dy$ to $p dp d\Omega$ by using the Jacobian of the transformation relating the variables. The simplified integral is then

$$\tilde{g}(f) = \int_{p=p_1}^{p_2} \int_{\Omega=\Omega_{\min}(p)}^{\Omega_{\max}(p)} \frac{e^{j\psi_{\text{des}}(x,y)} e^{-j\omega \sqrt{p^2 + \ell^2 \cos^2 \gamma}}}{2\pi \sqrt{p^2 + \ell^2 \cos^2 \gamma}} p dp d\Omega$$

$$= \int_{p_1}^{p_2} \left[\frac{\Omega_{\max}(p) - \Omega_{\min}(p)}{2\pi \sqrt{p^2 + \ell^2 \cos^2 \gamma}} e^{j\psi_{\text{des}}(x,y)} \right. \quad (33)$$

$$\left. \times e^{-j\omega \sqrt{p^2 + \ell^2 \cos^2 \gamma}} p dp \right]. \quad (34)$$

To further simplify the integral in (34), we define a variable

$$u = \sqrt{p^2 + \ell^2 \cos^2 \gamma}, \quad (35)$$

$u_1 = \sqrt{p_1^2 + \ell^2 \cos^2 \gamma}$ and $u_2 = \sqrt{p_2^2 + \ell^2 \cos^2 \gamma}$. Then, $du = p dp / \sqrt{p^2 + \ell^2 \cos^2 \gamma}$. The assumption that $\psi_{\text{des}}(x, y)$ only varies with p , equivalently u , allows us to define a 1D function $\psi(u)$ such that $\psi(u) = \psi_{\text{des}}(x, y)$. The angle made by the arc in S at a distance of p from \mathbb{P}_{RX} is $\Omega_{\max}(p) - \Omega_{\min}(p)$. We define a real positive function

$$a(u) = \frac{\Omega_{\max}(p) - \Omega_{\min}(p)}{2\pi}. \quad (36)$$

The integral in (34) can now be expressed as

$$\tilde{g}(f) = \int_{u_1}^{u_2} a(u) e^{j\psi(u)} e^{-j\omega u} du. \quad (37)$$

We observe that $a(u)$ induces an amplitude modulation effect over $e^{j\psi(u)}$. A closed form expression of $a(u)$ is given by (57) in Appendix-B. The objective of misfocus robust beamforming is to construct a 1D-phase profile $\psi(u)$ that leads to an approximately flat $|\tilde{g}(f)|^2$ for $f \in [f_c - B/2, f_c + B/2]$.

We discuss why a linear FMCW chirp-based solution is not well suited for misfocus robust beamforming when the RX is not along the boresight direction. Similar to our derivation for the boresight setting, we define $\hat{g}(\omega) = \tilde{g}(f_c + c\omega/(2\pi))$, and use (37) to write

$$\hat{g}(\omega) = \int_{-\infty}^{\infty} a(u) e^{j\psi(u)} \mathbb{I}_{u_1, u_2} e^{-j\omega u} du. \quad (38)$$

Now, $\psi(u)$ must be designed to achieve an approximately flat $|\hat{g}(\omega)|^2$ over $\omega \in [-\pi B/c, \pi B/c]$. Setting $e^{j\psi(u)} \mathbb{I}_{u_1, u_2}$ to a linear FMCW chirp, as in the boresight scenario, does not result in a flat $|\hat{g}(\omega)|^2$ due to the amplitude modulation effect induced by $a(u)$. The stationary phase method characterizes the impact of this amplitude modulation on $\hat{g}(\omega)$ under the assumption that $a(u)$ varies slowly when compared to $\psi(u)$. We use ω_u to denote the instantaneous frequency at u , i.e., $\omega_u = \psi'(u)$. The stationary phase method approximates $|\hat{g}(\omega_u)|^2$ as [38]

$$|\hat{g}(\omega_u)|^2 \approx \frac{2\pi a^2(u)}{|\psi''(u)|}. \quad (39)$$

For a linear FMCW chirp, we observe that $\psi''(u)$ is constant. In such a case, the spectral magnitude $|\hat{g}(\omega_u)|$ is proportional to $a(u)$. Therefore, a linear FMCW-based construction for $\psi(u)$ does not result in the desired “flat” $|\hat{g}(\omega)|^2$ when $a(u)$ varies over $[u_1, u_2]$.

We derive the frequency profile of a non-linear FMCW chirp that achieves robustness to misfocus. Under the assumption that $a(u)$ varies slowly when compared to $\psi(u)$, the instantaneous frequency of $a(u) e^{j\psi(u)} \mathbb{I}_{u_1, u_2}$ is $\psi'(u)$. The goal of InFocus is to design a $\psi(u)$ such that the spectrum of $|\hat{g}(\omega)|^2$ is contained within $[-\pi B/c, \pi B/c]$ and is approximately uniform. To this end, we assume that ω_u , the instantaneous frequency of $a(u) e^{j\psi(u)} \mathbb{I}_{u_1, u_2}$, is a continuous function that increases from $\psi'(u_1) = -\pi B/c$ to $\psi'(u_2) = \pi B/c$. The increase, however, can be non-linear and depends on $a(u)$. We assume that $\psi''(u) > 0 \forall u \in [u_1, u_2]$. From (39),

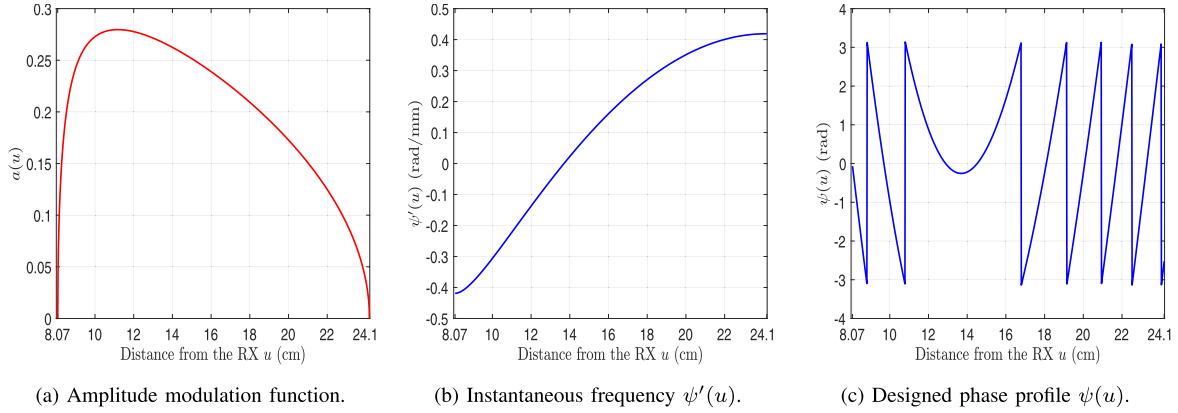


Fig. 7. Here, we show the amplitude modulation function $a(u)$ for a near-field scenario with $\ell = 15$ cm, $R = 10$ cm and $\gamma = 60^\circ$. In this example, $B = 40$ GHz and $f_c = 300$ GHz. We observe that $\psi'(u)$, i.e., the instantaneous frequency of the designed chirp, is a non-linear function of u . The phase profile $\psi(u)$ is the integral of $\psi'(u)$.

we observe that the stationary phase method relates $a(u)$ and $\psi(u)$ as

$$\psi''(u) \approx \frac{2\pi a^2(u)}{|\hat{g}(\omega_u)|^2}. \quad (40)$$

For $u \in [u_1, u_2]$, the instantaneous frequency $\omega_u \in [-\pi B/c, \pi B/c]$. It can be observed from (40) that a phase profile which achieves a flat $|\hat{g}(\omega)|^2$ for $\omega \in [-\pi B/c, \pi B/c]$ satisfies

$$\psi''(u) = \kappa a^2(u), \quad (41)$$

for some positive constant κ . The instantaneous frequency in (41) can be determined using $\psi'(u) = \int_{u_1}^u \psi''(u) du$, $\psi'(u_1) = -\pi B/c$ and $\psi'(u_2) = \pi B/c$. The solution is given by

$$\psi'(u) = \frac{2\pi B \int_{u_1}^u a^2(u) du}{c \int_{u_1}^{u_2} a^2(u) du} - \frac{\pi B}{c}. \quad (42)$$

In this paper, we compute the integral of $a^2(u)$ in (42) through numerical integration. The non-uniform nature of $a^2(u)$ over $[u_1, u_2]$ results in a non-linear frequency profile $\psi'(u)$.

We derive the phase profile $\psi(s)$ from (42) for the near-field system in Fig. 6a. The solution to the differential equation in (42), i.e.,

$$\psi(u) = \int_{u_1}^u \psi'(u) du, \quad (43)$$

is computed using numerical integration. For a near-field system with $\ell = 15$ cm, $R = 10$ cm and $\gamma = 60^\circ$, it can be noticed that $\ell \sin \gamma > R$ and $\mathbb{P}_{\text{RX}} \notin \mathcal{S}$. Here, $u_1 = 8.07$ cm and $u_2 = 24.18$ cm. The amplitude modulation function $a(u)$ for this example is shown in Fig. 7a. The second derivative of the designed phase profile, i.e., $\psi''(u)$, is proportional to $a^2(u)$ by the stationary phase equation in (41). The instantaneous frequency of the chirp, i.e., $\psi'(u)$ and the phase profile $\psi(u)$ are shown in Fig. 7b and Fig. 7c. It can be observed from Fig. 7b that the rate of change of the instantaneous frequency is small when the amplitude modulation function is low. Due to this slow increase, the dwell time of the chirp at this frequency is longer. The longer dwell time at such frequencies helps

compensate for the low amplitude scaling and achieves a flat frequency spectrum in the desired range.

Now, we demonstrate the performance of the beamformer associated with the designed 1D function $\psi(u)$. The 2D phase profile $\psi_{\text{des}}(x, y)$ is given by

$$\psi_{\text{des}}(x, y) = \psi(\sqrt{(x + \ell \sin \gamma)^2 + y^2 + \ell^2 \cos^2 \gamma}), \quad (44)$$

and the phase profile applied at the TX is $\phi(x, y) = \phi_{\text{std}}(x, y) + \psi_{\text{des}}(x, y)$. To illustrate our design, we consider a 40 GHz bandwidth system operating at $f_c = 300$ GHz. We use $\ell = 15$ cm, $R = 10$ cm and $\gamma = 60^\circ$. In Fig. 8a, we show the designed phase profile $\psi_{\text{des}}(x, y)$. The proposed phase profile $\phi_{\text{std}}(x, y) + \psi_{\text{des}}(x, y)$ is shown in Fig. 8b and the frequency response of the equivalent SISO channel is shown in Fig. 8c. We observe from Fig. 8c that the proposed phase profile achieves an approximately flat beamforming gain over the desired bandwidth.

2) *Solution When $\mathbb{P}_{\text{RX}} \in \mathcal{S}$* : We now construct the misfocus robust phase profile for a near-field scenario in Fig. 9a where $\mathbb{P}_{\text{RX}} \in \mathcal{S}$. In this scenario, $0 < \ell \sin \gamma < R$. Similar to our assumption in Sec. V-B.1, we assume that the phase profile $\psi_{\text{des}}(x, y)$ is constant for all the ITX coordinates that are equidistant from \mathbb{P}_{RX} . To construct a robust $\psi_{\text{des}}(x, y)$, we first design a 1D-phase function $\psi(u)$. Here, u represents the distance between an ITX coordinate and the RX, and $u \in [\ell, \sqrt{(R + \ell \sin \gamma)^2 + \ell^2}]$ when $\mathbb{P}_{\text{RX}} \in \mathcal{S}$. We split the set of ITX coordinates, i.e., \mathcal{S} , into \mathcal{S}_I and its complement $\mathcal{S} \setminus \mathcal{S}_I$ as shown in Fig. 9b. Here, \mathcal{S}_I represents the set of all ITX coordinates that are within a distance of $R - \ell \sin \gamma$ from \mathbb{P}_{RX} . We observe that the RX is along the boresight of the array corresponding to \mathcal{S}_I , and the projection of the RX lies outside $\mathcal{S} \setminus \mathcal{S}_I$. In this section, we show how splitting \mathcal{S} into \mathcal{S}_I and its complement allows us to reuse the results in Sec. V-A and Sec. V-B.1.

We obtain a compact representation of $\tilde{g}(f)$, an approximation of the equivalent SISO channel. The integral in (20) can

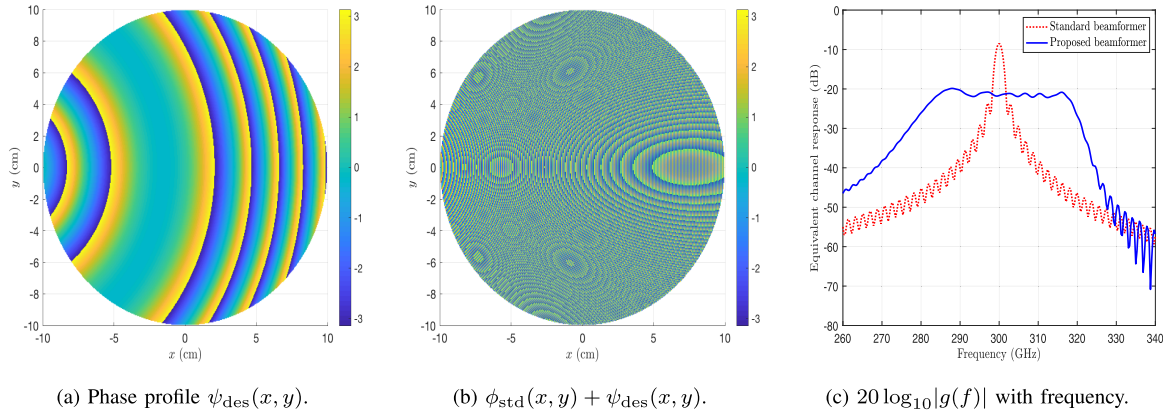


Fig. 8. The 2D-phase profile $\psi_{\text{des}}(x, y)$ designed with InFocus for a near-field scenario where $\mathbb{P}_{\text{RX}} \notin \mathcal{S}$ is shown in Fig. 8a. When the TX applies the phase profile in Fig. 8b, the RX observes the frequency domain channel in Fig. 8c. InFocus achieves an approximately flat channel response over the desired bandwidth of 40 GHz.

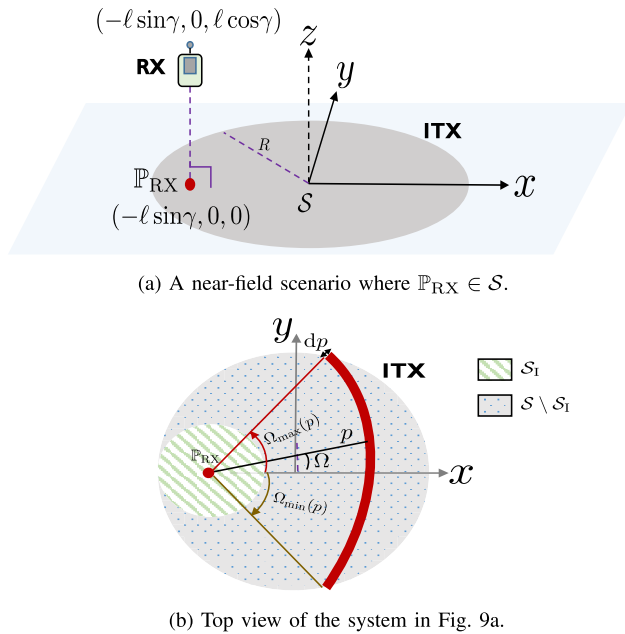


Fig. 9. A scenario where \mathbb{P}_{RX} , the projection of the RX on the plane containing the ITX, lies inside \mathcal{S} which is a disc of radius R . The set \mathcal{S}_1 contains the ITX coordinates which are within a distance of $R - \ell \sin \gamma$ from \mathbb{P}_{RX} .

be evaluated over the two regions \mathcal{S}_1 and $\mathcal{S} \setminus \mathcal{S}_1$ as

$$\tilde{g}(f) = \underbrace{\int_{\mathcal{S}_1} \frac{1}{2\pi\ell(x, y)} e^{j\psi_{\text{des}}(x, y)} e^{-j\omega\ell(x, y)} dx dy}_{T_1} + \underbrace{\int_{\mathcal{S} \setminus \mathcal{S}_1} \frac{1}{2\pi\ell(x, y)} e^{j\psi_{\text{des}}(x, y)} e^{-j\omega\ell(x, y)} dx dy}_{T_2}. \quad (45)$$

To simplify (45), we use a circular coordinate system with \mathbb{P}_{RX} as the center. The radius and the angle in this system are denoted by p and Ω . We observe that $\ell(x, y) = \sqrt{p^2 + \ell^2 \cos^2 \gamma}$ and set $u = \sqrt{p^2 + \ell^2 \cos^2 \gamma}$. Now, the first term T_1 in (45) involves an integral over \mathcal{S}_1 , i.e., a disc of

radius $R - \ell \sin \gamma$. This integral has the same structure as (21) and can be simplified to

$$T_1 = \int_{\ell \cos \gamma}^{\sqrt{\ell^2 \cos^2 \gamma + (R - \ell \sin \gamma)^2}} e^{j\psi(u)} e^{-j\omega u} du. \quad (46)$$

For the integral over $\mathcal{S} \setminus \mathcal{S}_1$, it can be shown that the second term T_2 in (45) takes the same form as (33). The limits of integration, however, are different as $p \in [R - \ell \sin \gamma, R + \ell \sin \gamma]$ for the ITX coordinates in $\mathcal{S} \setminus \mathcal{S}_1$. Using the same arguments in Sec. V-B.1, we express T_2 as

$$T_2 = \int_{\sqrt{\ell^2 \cos^2 \gamma + (R - \ell \sin \gamma)^2}}^{\sqrt{\ell^2 \cos^2 \gamma + (R + \ell \sin \gamma)^2}} a(u) e^{j\psi(u)} e^{-j\omega u} du. \quad (47)$$

To express $\tilde{g}(f)$ in compact form, we define a new amplitude modulation function

$$b(u) = \begin{cases} 1 & \ell \cos \gamma \leq u \leq \sqrt{\ell^2 \cos^2 \gamma + (R - \ell \sin \gamma)^2} \\ a(u) & \sqrt{\ell^2 \cos^2 \gamma + (R - \ell \sin \gamma)^2} < u \\ & \leq \sqrt{\ell^2 \cos^2 \gamma + (R + \ell \sin \gamma)^2} \end{cases}. \quad (48)$$

Substituting T_1 and T_2 in (45), we can express $\tilde{g}(f)$ as

$$\tilde{g}(f) = \int_{\ell \cos \gamma}^{\sqrt{\ell^2 \cos^2 \gamma + (R + \ell \sin \gamma)^2}} b(u) e^{j\psi(u)} e^{-j\omega u} du. \quad (49)$$

As (49) has the same structure as (37), the stationary phase method can be used to design $\psi(u)$, i.e., the phase profile of the non-linear FMCW chirp, so that $|\tilde{g}(f)|^2$ is “uniform” over the desired bandwidth.

We now describe the chirp signal designed with the stationary phase method. In this method, the second derivative of $\psi(u)$ is proportional to $b^2(u)$. From (49), we observe that the chirp signal with a phase profile of $\psi(u)$ starts at $u = \ell \cos \gamma$ and ends at $u = \sqrt{\ell^2 \cos^2 \gamma + (R + \ell \sin \gamma)^2}$. We consider a near-field scenario with $\ell = 15$ cm, $\gamma = 15^\circ$, and $R = 10$ cm. In this scenario, $\mathbb{P}_{\text{RX}} \in \mathcal{S}$ and the corresponding amplitude modulation function is shown in Fig. 10a. We plot the instantaneous frequency of the chirp in Fig. 10b and the phase function $\psi(u)$ in Fig. 10c. We use a bandwidth of

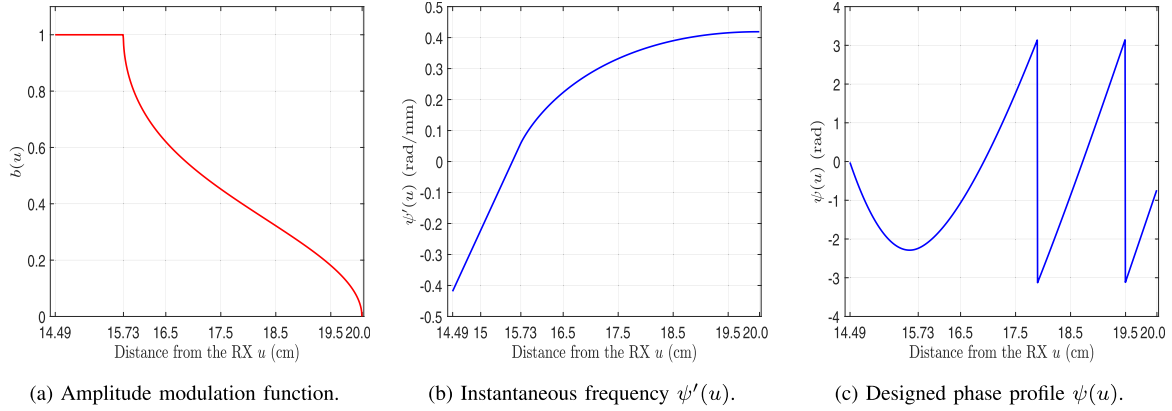


Fig. 10. The amplitude modulation function $b(u)$ is 1 for the ITX coordinates that lie within S_I . In this example, $\ell = 15$ cm, $\gamma = 15^\circ$ and $R = 10$ cm. A bandwidth of 40 GHz is used at $f_c = 300$ GHz. The instantaneous frequency and the phase profile of the designed chirp are shown in Fig. 10b and Fig. 10c.

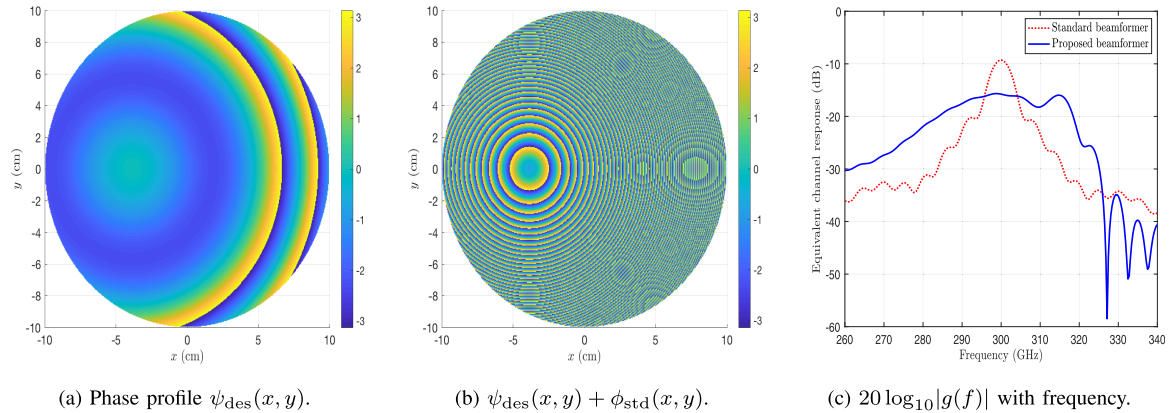


Fig. 11. An example of the discrete chirp-based phase profile designed with InFocus is shown in Fig. 11a for $\Delta = 0.5$ mm. Here, $B = 40$ GHz, $f_c = 300$ GHz, $\ell = 15$ cm, $\gamma = 15^\circ$ and $R = 10$ cm. For such parameters, $\mathbb{P}_{\text{RX}} \in \mathcal{S}$. The equivalent channel gains achieved with InFocus and the standard beamformer are shown in Fig. 11c.

40 GHz around $f_c = 300$ GHz to derive the phase function in Fig. 10c. The 2D-phase profile $\psi_{\text{des}}(x, y)$ associated with the designed chirp is computed using (44) and is shown in Fig. 11a. When the phase profile in Fig. 11b is applied at the TX, we observe from Fig. 11c that the equivalent SISO channel $g(f)$ is approximately constant over the desired frequency band.

We explain how to design phase profiles when the TX has a rectangular array geometry. In this case, the RX is first projected onto the plane containing the rectangular array to obtain \mathbb{P}_{RX} . Then, the amplitude modulation function $a(u)$ is determined from the angle subtended by different arcs at \mathbb{P}_{RX} . These arcs are centered about \mathbb{P}_{RX} and intersect the rectangular surface containing the array. Finally, the phase profile $\psi(u)$ is derived from $a(u)$ using the stationary phase method. Now, we discuss the challenges in extending InFocus to multi-antenna receivers. When the aperture of the RX is significantly smaller than that of the TX, the receive phased array can be first configured. The equivalent SISO channel under receive beamforming is a weighted combination of terms similar to (19). In this case, the amplitude modulation function takes complex values and a spatial chirp must be constructed appropriately for misfocus mitigation. When the aperture at the

RX is comparable to the TX, the design problem is challenging as misfocus occurs at both the TX and the RX. Developing misfocus mitigation methods for scenarios where the apertures of the TX and the RX are comparable is an interesting research direction.

VI. ACHIEVABLE RATE WITH INFOCUS

In this section, we describe the simulation setup and explain how to compute the achievable rate with the equivalent SISO channel obtained after beamforming. Then, we study the rate achieved with InFocus and standard beamforming as a function of the RX location, the operating bandwidth and the resolution of phase shifters.

We consider a near-field system in Fig. 1b with a circular planar array of radius $R = 10$ cm at the TX and a single antenna RX. We assume that the location of the RX, equivalently the channel $h(x, y, f)$, is known to the TX. We use a carrier frequency of $f_c = 300$ GHz. The spacing between the antenna elements at the TX is $\Delta = \lambda_c/2$, which is 0.5 mm. For the half-wavelength spaced circular planar array at the TX, the number of antennas is $N_{\text{tx}} = 124,980$. The total power transmitted by the TX array is set to 1 mW. The power

transmitted by each antenna is then $1\text{ mW}/N_{\text{tx}}$. We use q to denote the resolution of the RF phase shifters at the TX. The phase shift alphabet has 2^q uniformly spaced angles in $[0, 2\pi)$ defined by the set $\mathbb{Q}_q = \{0, 2\pi/2^q, 4\pi/2^q, \dots, 2\pi(2^q - 1)/2^q\}$. The phase profiles derived with standard beamforming and InFocus take continuous values in $[0, 2\pi)$. The entries of these phase profiles are quantized to the nearest element in the set \mathbb{Q}_q and the quantized phase shifts are applied to the TX array for beamforming. The equivalent SISO channels with InFocus and standard beamforming are calculated using (3).

The achievable rate corresponding to an equivalent SISO channel is computed using the procedure in [25]. In this procedure, the wideband channel over $f \in [f_c - B/2, f_c + B/2]$ is first split into N_{sub} sub-bands. We define $\{f_k\}_{k=1}^{N_{\text{sub}}}$ as N_{sub} equally spaced frequencies in $[f_c - B/2, f_c + B/2]$. The power allocated over the k^{th} sub-band is defined as η_k and the corresponding power density is $\eta_k N_{\text{sub}}/B$. The total transmit power is defined as $\eta = \sum_{k=1}^{N_{\text{sub}}} \eta_k$. The equivalent channel gain for a sub-band centered at f is $|g(f)|^2$ where $g(f)$ is defined in (3). We use the frequency selective thermal noise model discussed in [25]. We define $n(f)$ as the noise power spectral density (PSD), \hbar as the Planck's constant, k_{btz} as the Boltzmann's constant, and T as the system temperature. The noise PSD is then [25]

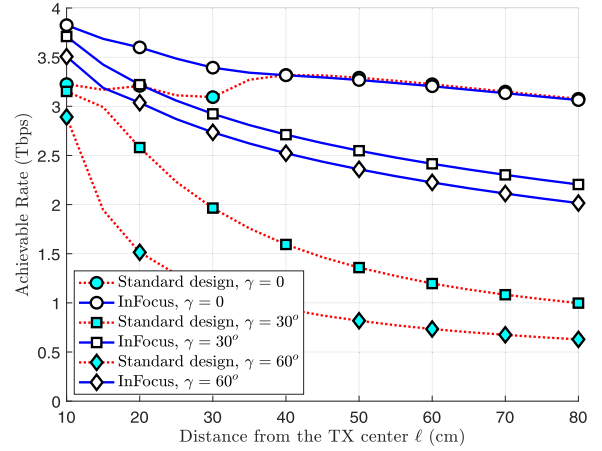
$$n(f) = \frac{\hbar f}{\exp\left(\frac{\hbar f}{k_{\text{btz}} T}\right) - 1}. \quad (50)$$

The achievable rate corresponding to the equivalent SISO system is expressed as [25]

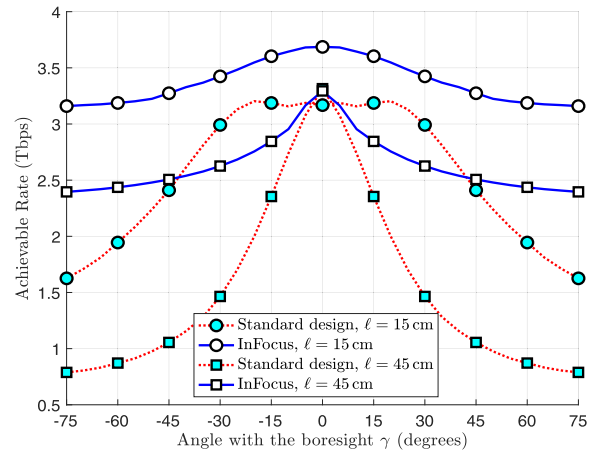
$$R = \frac{B}{N_{\text{sub}}} \sum_{k=1}^{N_{\text{sub}}} \log_2 \left(1 + \frac{\eta_k N_{\text{sub}} |g(f_k)|^2}{n(f_k) B} \right). \quad (51)$$

The achievable rate accounts for the distance-dependent path loss through $\ell(x, y)$ in $g(f_k)$. The rate, however, does not account for the insertion loss due to the phase shifters and also the loss due to molecular absorption. Under these non-idealities, the achievable rates with InFocus and standard beamforming are expected to be smaller than our estimate. In our simulations, we use $N_{\text{sub}} = 512$, $T = 290$ Kelvin, $\hbar = 6.625 \times 10^{-34}$ Joule.sec and $k_{\text{btz}} = 1.3806 \times 10^{-23}$ Joule/Kelvin. A transmit power of $\eta = 1$ mW is distributed across different sub-bands using water filling-based power allocation to maximize the rate. As the equivalent SISO channel with standard beamforming has a large gain at frequencies close to f_c , the water filling method allocates higher power around f_c when compared to other frequencies. The equivalent SISO channel with InFocus, however, has a ‘‘constant’’ gain over the desired frequency band. In this case, the water filling technique achieves ‘‘uniform’’ power allocation over the desired bandwidth.

We now investigate the rate achieved with InFocus as a function of the RX location. We use $B = 40$ GHz and set the resolution of the phase shifters to $q = 2$ bits. In a boresight scenario where $\gamma = 0^\circ$, we observe from Fig. 12a that standard beamforming results in a lower rate than InFocus for $\ell \leq 35$ cm due to the misfocus effect in the near-field regime. The rate with both the techniques, however, is the



(a) Achievable rate with the transceiver distance



(b) Achievable rate with angle γ .

Fig. 12. We observe from Fig. 12a that InFocus achieves a higher rate than standard beamforming for $\gamma = 30^\circ$ and 60° . In a boresight setting, standard beamforming achieves the same rate as InFocus for $\ell \geq 40$ cm. This is because beam squint, the analogue of misfocus in the far-field, does not occur along the boresight direction. Fig. 12b shows that InFocus performs better than standard beamforming for all angles in $[-75^\circ, 75^\circ]$.

same for $\ell \geq 40$ cm due to the reduced misfocus effect at larger distances. For large distances, the misfocus effect is same as the beam squint effect which does not occur in the boresight direction [13]. For angles $\gamma = 30^\circ$ and 60° , the rate with InFocus is higher than the one achieved by the standard design at all distances. The superior performance achieved with InFocus at large distances makes it promising for misfocus and beam squint robust transmission in wideband systems. From Fig. 12b, we note that standard design performs poor for a large γ . The phase profile constructed with InFocus allows an efficient use of the operating bandwidth than the standard design for all $\gamma \in [-75^\circ, 75^\circ]$.

Now, we discuss a performance benchmark based on standard beamforming with a thinned array. Thinning is a technique where a set of antennas in an array are turned off to reduce the effective aperture. We study standard beamforming with a radially thinned array. In this configuration, the antennas outside a disc of radius r are switched off and the standard phase profile $\phi_{\text{std}}(x, y)$ is applied for the active antennas.

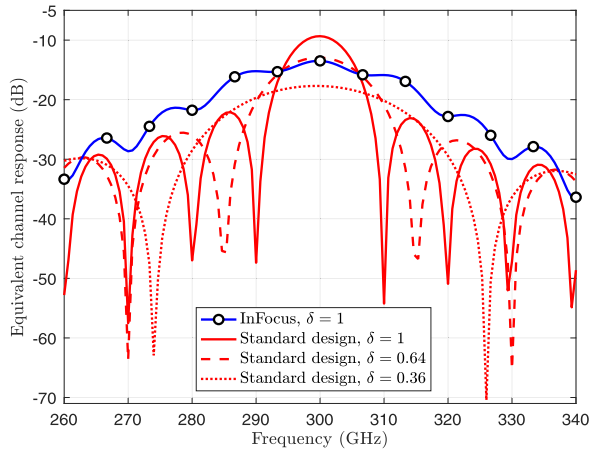
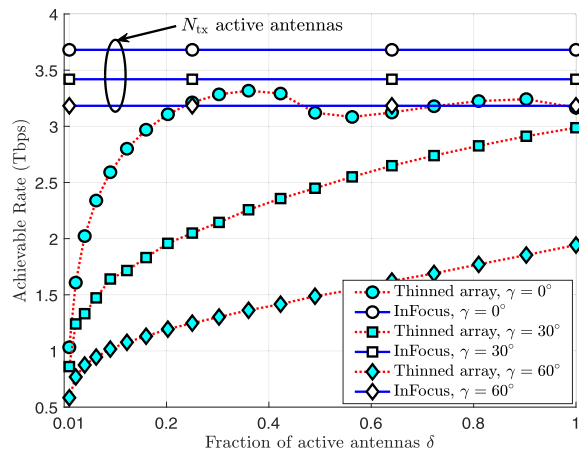
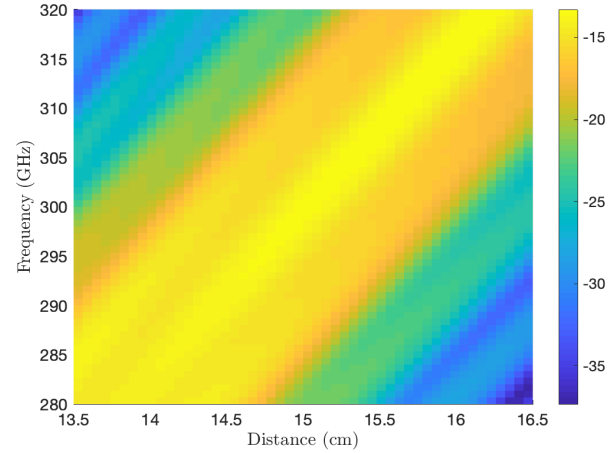
(a) $20 \log_{10}|g(f)|$ with frequency.(b) Rate with the fraction of active antennas δ .

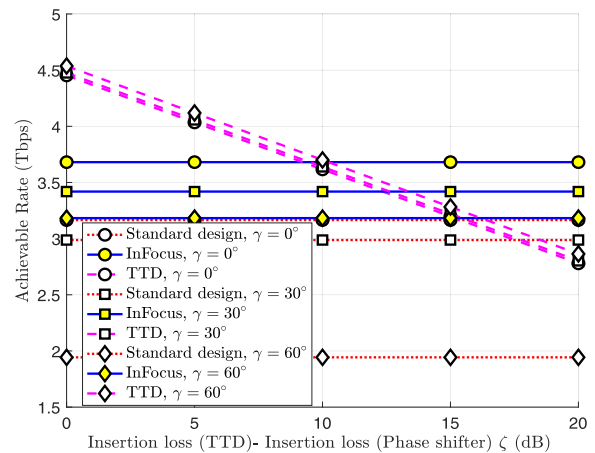
Fig. 13. In Fig. 13a, we consider a boresight scenario with $\ell = 15$ cm, $B = 40$ GHz and $q = 2$ bits. Standard beamformer achieves a reasonable gain over the desired bandwidth when the fraction of active antennas is $\delta = 0.36$. The gain, however, is less than that achieved with InFocus under the per-antenna power constraint. Fig. 13b shows that InFocus achieves a higher rate than standard beamforming using a thinned array for any δ .

We define δ as the fraction of antennas that are active in the thinned array. Here, $\delta \approx r^2/R^2$. Under the per-antenna power constraint, the magnitude of the beamforming weights at the active antennas is $1/\sqrt{N_{\text{tx}}}$, and the norm of the beamformer is δ . We observe that a smaller δ corresponds to a smaller aperture. Although reducing the aperture mitigates misfocus, it results in a lower beamforming gain at f_c as shown in Fig. 13a. The poor gain when compared to the full aperture scenario is due to a lower total transmit power under the per-antenna power constraint. We observe from Fig. 13b that the thinned array-based approach results in a lower rate than InFocus for any δ . InFocus performs better as it activates all the antennas while achieving robustness to misfocus.

In Fig. 14a, we investigate the power distribution around the receiver when the TX uses InFocus. To this end, we consider the same boresight scenario discussed in Fig. 3b. A comparative study between Fig. 3b and Fig. 14a indicates that the region of focus with InFocus is wider along the radial dimension when compared to standard beamforming. The widening



(a) Received power (dB) with InFocus



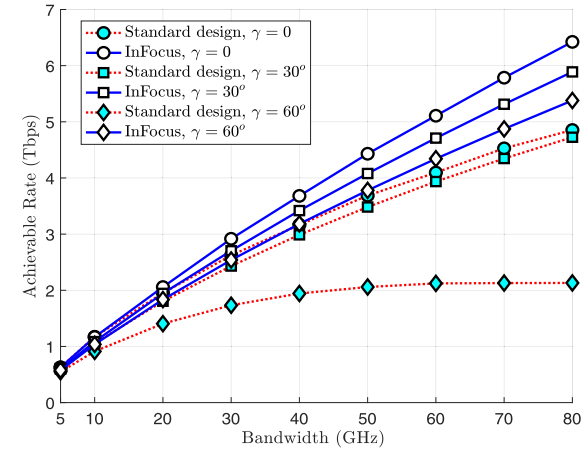
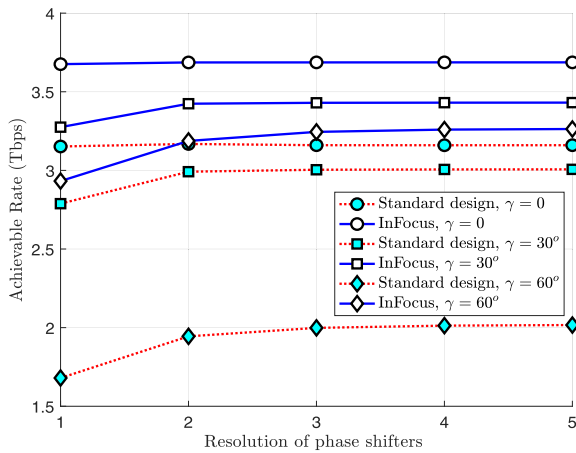
(b) Rate with the difference in the insertion loss.

Fig. 14. We consider the same boresight scenario in Fig. 14 and Fig. 3b, and observe that the beams with InFocus have a wider region of focus than the standard beam. For $\ell = 15$ cm, $B = 40$ GHz and $q = 2$ bits, we notice from Fig. 14b that InFocus achieves a higher rate than TTD-based beamforming if the insertion loss due to a TTD element is about 10 – 17.5dB higher than the insertion loss due to a phase shifter.

reduces the peak beamforming gain at the RX and is sufficient enough to ensure that the RX “observes” all the frequencies within the desired bandwidth even under misfocus.

InFocus is also useful in other mobile applications where wide beams must be constructed without turning off antennas. Such wide beams are preferred when a huge beam training overhead is associated with pointing narrow beams [39]. Furthermore, wide beams also achieve robustness to RX positioning errors than narrow beams. Our observation that the beams with InFocus are wider than the standard design is solely based on simulations in Fig. 14a and Fig. 3b. Finding an analytical expression for the width of the region of focus is an interesting problem that is beyond the scope of this paper.

We compare the performance of phased arrays using InFocus with TTD beamforming, from a rate perspective. TTD arrays use delay elements to achieve a frequency dependent phase profile $\phi(x, y, f) = 2\pi f \ell(x, y)/c$. We use ζ to denote the additional insertion loss incurred with a TTD element over a phase shifter. For example, $\zeta = 3$ dB means

(a) Rate with the operating bandwidth B .

(b) Rate with the resolution of phase shifters.

Fig. 15. In this example, we use $\ell = 15$ cm and $\gamma \in \{0^\circ, 30^\circ, 60^\circ\}$. InFocus adapts the phase profile, equivalently the beam, according to the operating bandwidth and performs better than the standard design as seen in Fig. 15a. From Fig. 15b, we observe that InFocus achieves a higher rate even under coarse phase quantization.

that the effective power transmitted out of a single TTD element is half the power transmitted using one phase shifter. As a reference, we assume that the insertion loss with a phase shifter is 0 dB. The equivalent SISO channel when a TTD array is used for beamforming is then

$$g_{\text{TTD}}(f) = 10^{-\zeta/20} \sum_{(x,y) \in \mathcal{S}_D} \frac{c}{2\pi f \ell(x,y) \sqrt{N_{\text{tx}}}}. \quad (52)$$

Fig. 14b shows the rate achieved by an infinite resolution TTD array for different ζ . Ignoring the circuit implementation complexity, we observe from Fig. 14b that TTD-based beamforming is advantageous over InFocus when $\zeta < 10$ dB. Recent work on mmWave beamforming at around 150 GHz has reported an insertion loss of 21.5 dB with a TTD element [40] and 9.5 dB with a phase shifter [41]. For these parameters, the difference is $\zeta = 12$ dB (> 10 dB) which makes a case to adopt InFocus with phased arrays than TTD-based beamforming.

InFocus adapts its beam according to the operating bandwidth. For example, the phase profile corresponding to (30)

linearly increases with the bandwidth B . Standard beamforming, however, designs a beam that is agnostic to the bandwidth and suffers from the misfocus effect. In Fig. 15a, we plot the achievable rate as a function of the operating bandwidth for a near-field system with $q = 2$ bit phase shifters at the TX and $\ell = 15$ cm. As the misfocus effect is prominent in systems operating over wide bandwidths, standard beamforming performs poor at such bandwidths. The spectral efficiency associated with 3 Tbps over 40 GHz is 75 bps/Hz, which is too large for practical modulations today. In such a case, InFocus can still be used by reducing the transmit power to support feasible modulation schemes. Finally, we observe from Fig. 15b that InFocus performs better than standard beamforming even with one- or two-bit phased arrays.

VII. CONCLUSION

Near-field beams focus the RF signals in a spatial region instead of a direction. The use of massive phased arrays to realize near-field beams, however, results in a misfocus effect in wideband systems with standard center frequency-based beamforming. Such an issue arises because the region of focus changes with the frequency of the RF signal. In this paper, we studied the misfocus effect for receivers in the boresight direction of the transmit array. Furthermore, we proposed a spatial FMCW chirp-based beam that achieves robustness to misfocus in a boresight setting. We also extended our design to scenarios where the receiver does not lie along the boresight direction. Our extension used the stationary phase method which resulted in a non-linear spatial FMCW chirp for robustness to misfocus. Beamforming with the proposed design achieves a uniform gain over a wide bandwidth and a higher rate than the standard design.

APPENDIX A

EQUIVALENT CHANNEL WITH STANDARD BEAMFORMING

We simplify $g_{a,\text{std}}(f)$, an approximation of the equivalent SISO channel with standard beamforming. As the integrand in (9) is independent of θ , we can integrate over this angle to write

$$g_{a,\text{std}}(f) = \frac{c}{\sqrt{\pi} R f \Delta} \int_0^R \frac{1}{\sqrt{r^2 + \ell^2}} e^{-j \frac{2\pi(f-f_c)}{c} \sqrt{r^2 + \ell^2}} r dr. \quad (53)$$

We now use the definition of ω in (11) and $s = \sqrt{r^2 + \ell^2}$. The integral in (53) is then

$$g_{a,\text{std}}(f) = \frac{c}{\sqrt{\pi} R f \Delta} \int_{\ell}^{\sqrt{R^2 + \ell^2}} e^{-j\omega s} ds. \quad (54)$$

The integral in (54) is the Fourier transform of a rectangular function which is 1 for $s \in [\ell, \sqrt{R^2 + \ell^2}]$. The Fourier transform of this function can be expressed in terms of the sinc function defined as $\text{sinc}(x) = \sin(x)/x$. We note that

$$\int_a^b e^{-j\omega s} ds = (b-a) e^{-j\omega \frac{(a+b)}{2}} \text{sinc}\left(\frac{\omega(b-a)}{2}\right). \quad (55)$$

We put these observations in (54) to obtain the result in (13).

APPENDIX B

CHIRP AMPLITUDE MODULATION FUNCTION $a(u)$

We observe from Fig. 6b that a circle of radius p around \mathbb{P}_{RX} intersects \mathcal{S} at an arc. The angle made by this arc at \mathbb{P}_{RX} is $\Omega_{\text{max}}(p) - \Omega_{\text{min}}(p)$. In this section, we first compute this angle in terms of p and then write $a(u)$ as a function of $u = \sqrt{p^2 + \ell^2 \cos^2 \gamma}$.

The angle $\Omega_{\text{max}}(p)$ can be found from the triangle $\text{O}\mathbb{P}_{\text{RX}}\text{Q}$ shown in Fig. 6b. The lengths of the sides of this triangle are $\overline{\text{O}\mathbb{P}_{\text{RX}}} = \ell \sin \gamma$, $\overline{\mathbb{P}_{\text{RX}}\text{Q}} = p$ and $\overline{\text{OQ}} = R$. Now, by cosine rule,

$$\cos \Omega_{\text{max}}(p) = \frac{p^2 + \ell^2 \sin^2 \gamma - R^2}{2p\ell \sin \gamma}. \quad (56)$$

We notice from Fig. 6b that $\Omega_{\text{min}}(p) = -\Omega_{\text{max}}(p)$ by symmetry. Therefore, $a(u) = \Omega_{\text{max}}(p)/\pi$. Putting this observation together with $p = \sqrt{u^2 - \ell^2 \cos^2 \gamma}$ and (56), we can express $a(u)$ as

$$a(u) = \frac{1}{\pi} \cos^{-1} \left(\frac{u^2 - \ell^2 \cos^2 \gamma + \ell^2 \sin^2 \gamma - R^2}{2\ell \sin \gamma \sqrt{u^2 - \ell^2 \cos^2 \gamma}} \right). \quad (57)$$

An example of the amplitude modulation function $a(u)$ in (57) is shown in Fig. 7a.

REFERENCES

- [1] P. Zhou *et al.*, "IEEE 802.11ay-based mmWave WLANs: Design challenges and solutions," *IEEE Commun. Surveys Tuts.*, vol. 20, no. 3, pp. 1654–1681, 3rd Quart., 2018.
- [2] H. Elayan, O. Amin, B. Shihada, R. M. Shubair, and M.-S. Alouini, "Terahertz band: The last piece of RF spectrum puzzle for communication systems," *IEEE Open J. Commun. Soc.*, vol. 1, pp. 1–32, 2019.
- [3] I. F. Akyildiz, J. M. Jornet, and C. Han, "Terahertz band: Next frontier for wireless communications," *Phys. Commun.*, vol. 12, pp. 16–32, Sep. 2014.
- [4] T. S. Rappaport *et al.*, *Wireless Communications: Principles and Practice*, vol. 2. Upper Saddle River, NJ, USA: Prentice-Hall, 1996.
- [5] D. Headland, Y. Monnai, D. Abbott, C. Fumeaux, and W. Withayachumnankul, "Tutorial: Terahertz beamforming, from concepts to realizations," *APL Photon.*, vol. 3, no. 5, May 2018, Art. no. 051101.
- [6] H. Kamoda, T. Iwasaki, J. Tsumochi, T. Kuki, and O. Hashimoto, "60-GHz electronically reconfigurable large reflectarray using single-bit phase shifters," *IEEE Trans. Antennas Propag.*, vol. 59, no. 7, pp. 2524–2531, Jul. 2011.
- [7] Y. Yu, P. G. Baltus, A. de Graauw, E. van der Heijden, C. S. Vaucher, and A. H. van Roermund, "A 60 GHz phase shifter integrated with LNA and PA in 65 nm CMOS for phased array systems," *IEEE J. Solid-State Circuits*, vol. 45, no. 9, pp. 1697–1709, Sep. 2010.
- [8] R. J. Mailloux, *Phased Array Antenna Handbook*. Norwood, MA, USA: Artech House, 2017.
- [9] S. K. Garakoui, E. A. M. Klumperink, B. Nauta, and F. E. van Vliet, "Phased-array antenna beam squinting related to frequency dependency of delay circuits," in *Proc. 41st Eur. Microw. Conf.*, Oct. 2011, pp. 1304–1307.
- [10] M. Longbrake, "True time-delay beamsteering for radar," in *Proc. IEEE Nat. Aerosp. Electron. Conf. (NAECON)*, Jul. 2012, pp. 246–249.
- [11] R. Rotman, M. Tur, and L. Yaron, "True time delay in phased arrays," *Proc. IEEE*, vol. 104, no. 3, pp. 504–518, Mar. 2016.
- [12] B. Liu and H. Zhu, "Rotman lens-based two-tier hybrid beamforming for wideband mmWave MIMO-OFDM system with beam squint," *EURASIP J. Wireless Commun. Netw.*, vol. 2018, no. 1, pp. 1–13, Dec. 2018.
- [13] M. Cai *et al.*, "Effect of wideband beam squint on codebook design in phased-array wireless systems," in *Proc. IEEE Global Commun. Conf. (GLOBECOM)*, Dec. 2016, pp. 1–6.
- [14] X. Liu and D. Qiao, "Space-time block coding-based beamforming for beam squint compensation," *IEEE Wireless Commun. Lett.*, vol. 8, no. 1, pp. 241–244, Feb. 2019.
- [15] J. Tan and L. Dai, "Delay-phase precoding for THz massive MIMO with beam split phased-array antenna beam squinting related to frequency dependency of delay circuits," in *Proc. IEEE Global Commun. Conf.*, Dec. 2019, pp. 1–6.
- [16] B. Zhai, Y. Zhu, A. Tang, and X. Wang, "THzPrism: Frequency-based beam spreading for terahertz communication systems," *IEEE Wireless Commun. Lett.*, vol. 9, no. 6, pp. 897–900, Jun. 2020.
- [17] K. H. Sayidmarie and Q. H. Sultan, "Synthesis of wide beam array patterns using quadratic-phase excitations," *Int. J. Electromagn. Appl.*, vol. 3, no. 6, pp. 127–135, 2013.
- [18] V. Sergeev, A. Davydov, G. Morozov, O. Orhan, and W. Lee, "Enhanced precoding design with adaptive beam width for 5G new radio systems," in *Proc. IEEE 86th Veh. Technol. Conf. (VTC-Fall)*, Sep. 2017, pp. 1–5.
- [19] Y. Han, S. Jin, C.-K. Wen, and X. Ma, "Channel estimation for extremely large-scale massive MIMO systems," *IEEE Wireless Commun. Lett.*, vol. 9, no. 5, pp. 633–637, May 2020.
- [20] H. Wymeersch, "A Fisher information analysis of joint localization and synchronization in near field," in *Proc. IEEE Int. Conf. Commun. Workshops (ICC Workshops)*, Jun. 2020, pp. 1–6.
- [21] N. J. Myers. (2020). *Misfocus Robust Beamforming Using InFocus*. [Online]. Available: <https://github.com/nitinjmyers>
- [22] V. Petrov, T. Kurner, and I. Hosako, "IEEE 802.15.3d: First standardization efforts for sub-terahertz band communications toward 6G," *IEEE Commun. Mag.*, vol. 58, no. 11, pp. 28–33, Nov. 2020.
- [23] D. He *et al.*, "Stochastic channel modeling for Kiosk applications in the terahertz band," *IEEE Trans. Terahertz Sci. Technol.*, vol. 7, no. 5, pp. 502–513, Sep. 2017.
- [24] E. Torkildson, U. Madhow, and M. Rodwell, "Indoor millimeter wave MIMO: Feasibility and performance," *IEEE Trans. Wireless Commun.*, vol. 10, no. 12, pp. 4150–4160, Dec. 2011.
- [25] A. Moldovan, M. A. Ruder, I. F. Akyildiz, and W. H. Gerstacker, "LOS and NLOS channel modeling for terahertz wireless communication with scattered rays," in *Proc. IEEE Globecom Workshops (GC Wkshps)*, Dec. 2014, pp. 388–392.
- [26] M. Fakhrazadeh, M.-R. Nezhad-Ahmadi, B. Biglarbegian, J. Ahmadi-Shokouh, and S. Safavi-Naeini, "CMOS phased array transmitter technology for 60 GHz wireless applications," *IEEE Trans. Antennas Propag.*, vol. 58, no. 4, pp. 1093–1104, Apr. 2010.
- [27] J. G. Lee, T. H. Jang, G. H. Park, H. S. Lee, C. W. Byeon, and C. S. Park, "A 60-GHz four-element beam-tapering phased-array transmitter with a phase-compensated VGA in 65-nm CMOS," *IEEE Trans. Microw. Theory Techn.*, vol. 67, no. 7, pp. 2998–3009, Jul. 2019.
- [28] M.-K. Cho, I. Song, and J. D. Cressler, "A true time delay-based SiGe bi-directional T/R chipset for large-scale wideband timed array antennas," in *Proc. IEEE Radio Freq. Integr. Circuits Symp. (RFIC)*, Jun. 2018, pp. 272–275.
- [29] E. Ghaderi, A. Sivadasan Ramani, A. A. Rahimi, D. Heo, S. Shekhar, and S. Gupta, "An integrated discrete-time delay-compensating technique for large-array beamformers," *IEEE Trans. Circuits Syst. I, Reg. Papers*, vol. 66, no. 9, pp. 3296–3306, Sep. 2019.
- [30] S. M. A. M. H. Abadi, K. Ghaemi, and N. Behdad, "Ultra-wideband, true-time-delay reflectarray antennas using ground-plane-backed, miniaturized-element frequency selective surfaces," *IEEE Trans. Antennas Propag.*, vol. 63, no. 2, pp. 534–542, Feb. 2015.
- [31] S. M. Perera *et al.*, "Wideband N -beam arrays using low-complexity algorithms and mixed-signal integrated circuits," *IEEE J. Sel. Topics Signal Process.*, vol. 12, no. 2, pp. 368–382, May 2018.
- [32] S. M. Bowers, A. Safaripour, and A. Hajimiri, "Dynamic polarization control," *IEEE J. Solid-State Circuits*, vol. 50, no. 5, pp. 1224–1236, May 2015.
- [33] A. Pizzo, L. Sanguinetti, and T. L. Marzetta, "Holographic MIMO communications," 2021, *arXiv:2105.01535*. [Online]. Available: <http://arxiv.org/abs/2105.01535>
- [34] L. M. Graves, "Riemann integration and Taylor's theorem in general analysis," *Trans. Amer. Math. Soc.*, vol. 29, no. 1, pp. 163–177, 1927.
- [35] W. T. Welford, *Aberrations of Optical Systems*. Boca Raton, FL, USA: CRC Press, 1986.
- [36] M. Vetterli, J. Kovačević, and V. K. Goyal, *Foundations of Signal Processing*. Cambridge, U.K.: Cambridge Univ. Press, 2014.
- [37] J. R. Klauder, A. C. Price, S. Darlington, and W. J. Albersheim, "The theory and design of chirp radars," *Bell Syst. Tech. J.*, vol. 39, no. 4, pp. 745–808, 1960.
- [38] C. Cook, *Radar Signals: An Introduction to Theory and Application*. Amsterdam, The Netherlands: Elsevier, 2012.

- [39] M. Polese, J. M. Jornet, T. Melodia, and M. Zorzi, "Toward end-to-end, full-stack 6G terahertz networks," *IEEE Commun. Mag.*, vol. 58, no. 11, pp. 48–54, Nov. 2020.
- [40] A. Karakuzulu, M. H. Eissa, D. Kissinger, and A. Malignaggi, "Broadband 110–170 GHz true time delay circuit in a 130-nm SiGe BiCMOS technology," in *IEEE MTT-S Int. Microw. Symp. Dig.*, Aug. 2020, pp. 775–778.
- [41] P. V. Testa, C. Carta, and F. Ellinger, "A 140–210 GHz low-power vector-modulator phase shifter in 130 nm SiGe BiCMOS technology," in *Proc. Asia-Pacific Microw. Conf. (APMC)*, Nov. 2018, pp. 530–532.



Nitin Jonathan Myers (Member, IEEE) received the B.Tech. and M.Tech. degrees in electrical engineering from the Indian Institute of Technology (IIT) Madras in 2016 and the Ph.D. degree in electrical and computer engineering (ECE) from The University of Texas at Austin (UT Austin) in 2020.

He is currently an Assistant Professor with Delft Center for Systems and Control, Delft University of Technology (TU Delft). Prior to joining TU Delft, he was a Senior Engineer with 5G Modem Research and Development Team, Samsung Semiconductor Inc., San Diego. His research interests include optimization and multi-dimensional signal processing, with applications to communications and sensing.

Dr. Myers received the DAAD WISE Scholarship in 2014 and a Silver Medal and Institute Merit Prize in 2016 during his undergraduate days at IIT Madras. At UT Austin, he received the University Graduate Continuing Fellowship 2019–2020, the 2018 and 2019 ECE Research Awards, and the 2018 ECE Professional Development Award from Cockrell School of Engineering. He was recognized as an Exemplary Reviewer by the IEEE TRANSACTIONS ON COMMUNICATIONS in 2019 and the IEEE WIRELESS COMMUNICATIONS LETTERS in 2018. Recently, he mentored a team of undergraduates that won the First Runner-Up Prize in the IEEE ICASSP 2020 Video Contest.



Robert W. Heath, Jr. (Fellow, IEEE) received the B.S. and M.S. degrees from the University of Virginia, Charlottesville, VA, USA, in 1996 and 1997, respectively, and the Ph.D. degree from Stanford University, Stanford, CA, USA, in 2002, all in electrical engineering.

From 1998 to 2001, he was a Senior Member of the Technical Staff then a Senior Consultant at Iospan Wireless Inc., San Jose, CA, USA, where he worked on the design and implementation of the physical and link layers of the first commercial MIMO-OFDM communication system. From 2002 to 2020, he was with The University of Texas at Austin, most recently as Cockrell Family Regents Chair in engineering and the Director of UT SAVES. He is presently a Distinguished Professor at North Carolina State University. He is also the President and the CEO of MIMO Wireless Inc. He has authored *Introduction to Wireless Digital Communication* (Prentice Hall, 2017) and *Digital Wireless Communication: Physical Layer Exploration Lab Using the NI USRP* (National Technology and Science Press, 2012), and coauthored *Millimeter Wave Wireless Communications* (Prentice Hall, 2014) and *Foundations of MIMO Communication* (Cambridge University Press, 2018).

Dr. Heath was a Distinguished Lecturer and a member of the Board of Governors in the IEEE Signal Processing Society. In 2017, he was selected as a fellow of the National Academy of Inventors. He is also a licensed Amateur Radio Operator, a Private Pilot, and a Registered Professional Engineer, TX, USA. He has been a coauthor of a number of award winning conferences and journal papers, including recently the 2016 IEEE Communications Society Fred W. Ellersick Prize, the 2016 IEEE Communications and Information Theory Societies Joint Paper Award, the 2017 Marconi Prize Paper Award, and the 2019 IEEE Communications Society Stephen O. Rice Prize. He received the 2017 EURASIP Technical Achievement Award and the 2019 IEEE Kiyo Tomiyasu Award. He is currently the Editor-in-Chief of *IEEE Signal Processing Magazine* and the Member-at-Large of the IEEE Communications Society Board of Governors.