

The influence of floodplain geometry on riverbed elevation change within and between flood events

Ahrendt, S.M.; Blom, A.; van Denderen, R. Pepijn; Schielen, R.M.J.; Horner-Devine, Alexander

Publication date

2022

Document Version

Final published version

Published in

Anthropogenic Rivers: Book of Abstracts NCR DAYS 2022 13-14 April | TU Delft

Citation (APA)

Ahrendt, S. M., Blom, A., van Denderen, R. P., Schielen, R. M. J., & Horner-Devine, A. (2022). The influence of floodplain geometry on riverbed elevation change within and between flood events. In A. Blom, L. M. Stancanelli, J. A. Dercksen, C. Ylla Arbós, M. K. Chowdhury, S. M. Ahrendt, C. Piccoli, R. M. J. Schielen, K. Sloff, & J. H. Slinger (Eds.), *Anthropogenic Rivers: Book of Abstracts NCR DAYS 2022 13-14 April | TU Delft* (pp. 30-31). (NCR Publication; No. 49-2022).

Important note

To cite this publication, please use the final published version (if applicable). Please check the document version above.

Copyright

Other than for strictly personal use, it is not permitted to download, forward or distribute the text or part of it, without the consent of the author(s) and/or copyright holder(s), unless the work is under an open content license such as Creative Commons.

Takedown policy

Please contact us and provide details if you believe this document breaches copyrights. We will remove access to the work immediately and investigate your claim.

Anthropogenic Rivers

Book of Abstracts

NCR DAYS 2022

13-14 April | TU Delft



*Astrid Blom, Laura M. Stancanelli, Jelle A. Dercksen, Clàudia Ylla Arbós,
M. Kifayath Chowdhury, Shelby M. Ahrendt, Carolina Piccoli,
Ralph M.J. Schielen, Kees Sloff & Jill H. Slinger (eds.)*

NCR Publication: 49-2022

Netherlands
Centre for
River studies **NCR**

The influence of floodplain geometry on riverbed elevation change within and between flood events

Shelby Ahrendt^{a,b*}, Astrid Blom^b, Pepijn van Denderen^c, Ralph Schielen^{a,d}, Alexander Horner-Devine^b

^aThe University of Washington, Dept. of Civil & Environmental Engineering, Seattle, Washington USA

^bDelft University of Technology, Delft, The Netherlands

^cHKV Lijn in Water, Lelystad, The Netherlands

^dRijkswaterstaat, The Netherlands

Keywords — flooding, morphodynamics, floodplain dynamics

Introduction

Flood events can cause abrupt changes to river channel morphology over short time scales. The spatial variation in patterns of erosion and deposition can also be high, making it challenging to predict morphodynamic response from a given discharge. Back-to-back floods can additionally cause adjustments to bed elevation that do not recover between events and can affect future flood hazards; intra-flood erosion can reduce channel-floodplain connectivity (e.g. Guan et al., 2016), and in-channel deposition can reduce overall conveyance for floodwaves (e.g. Stover & Montgomery, 2001). Understanding where and why different regions are prone to high degrees of bed elevation changes during floods is thus important for forecasting flood hazards in subsequent events. Previous work suggests that spatial changes in local river geometry can affect river bed elevation change during floods (Van Denderen, 2014). Channel confinement has also been shown to be a predictor of reach-scale channel response to floods (Sholtes et al., 2018). Here, we analyze relationships between longitudinal gradients in river channel width and bed elevation change in the Waal River. This work seeks to broadly understand the degree to which along-channel variation in river channel and floodplain geometry can be leveraged to predict bed elevation change during floods.

Floodplain variation hypotheses

Gradients in floodplain width are expected to be an important control on erosion and deposition patterns during high discharge events because they can generate gradients in flow velocity and sediment transport capacity. An abrupt spatial widening of the floodplain causes a backwater effect during peak flows as flow depth adjusts to the longitudinal change in planform geometry (Fig 1a). The resultant gradients in both flow velocity and sediment transport capacity can cause abrupt deposition where the floodplain widens and abrupt erosion where the floodplain narrows (Fig 1b). This behavior differs from low-flows where the discharge is confined within a main channel with constant width. Thus, we hypothesize that peak changes in main-channel

bed elevation during floods will correspond with peak gradients in floodplain width, with the direction of bed elevation change (i.e. erosion or deposition) dependent on whether the floodplain widens or narrows.

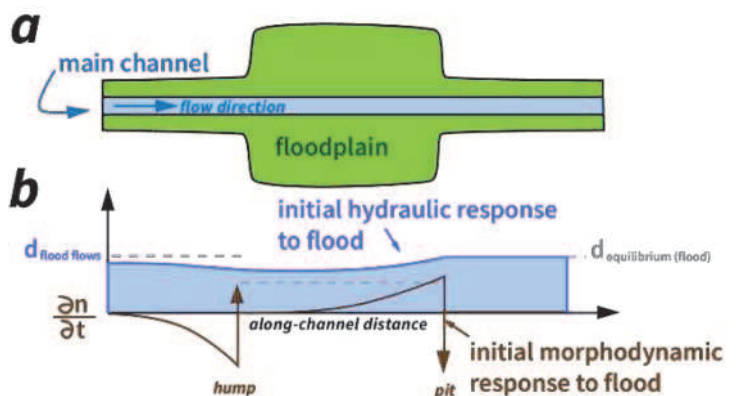


Figure 1. Example hypothesis of along-channel changes in floodplain width causing a backwater effect during flood events and initial morphodynamic response. **a)** A planform channel schematic where the main channel has a constant width and the floodplain has relatively wide and narrow segments. Flow is from left to right. **b)** An expected hydraulic response for a flood which spills onto the floodplain is shown in light blue. The expected initial bed elevation change ($\partial n/\partial t$) is shown in brown. A hump forms where the floodplain rapidly widens and a pit is expected to occur where the floodplain rapidly narrows.

Discharge & bed elevation analyses

We use high-resolution, biweekly bathymetry measurements from the Waal River in the Netherlands over the last 20 years to analyze bed elevation changes. A wavelet analysis proposed in Van Denderen et al. (2022) is used to isolate bed elevation changes on spatial scales of 300m-4km, those that are typically affected by discharge conditions on the Waal River. River bed variation as a function of discharge is analyzed at each location, and a linear fit is used to characterize the degree of difference in bed elevation changes between high and low flows (Fig 2b & c). The slope of this line is used to quantify bed elevation variation between high and low flows along-channel (Fig 2a). It is expected that the large differences in bed elevation change between

high and low flows shown in Fig 2a will correlate with large gradients in local floodplain width.

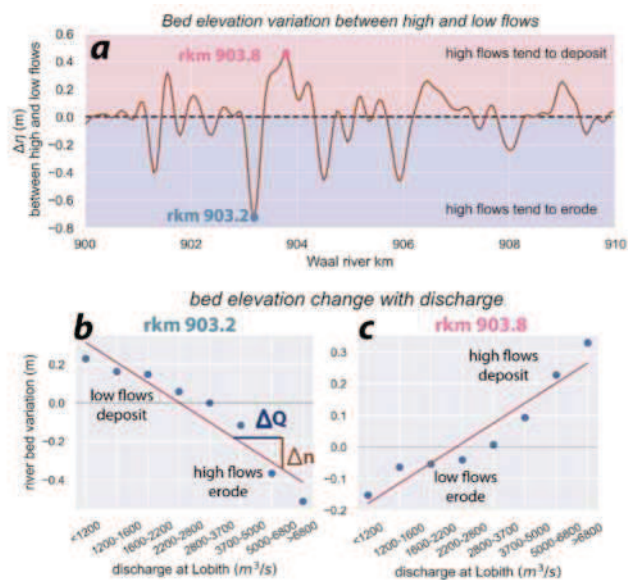


Figure 2. **a**) An example section of the Waal River (river km 900-910) showing differences in bed elevation change between high and low flows ($\Delta\eta$) which vary along the channel. **b** & **c**) show example calculations of ($\Delta\eta$) for rkm 903.2 where high flows tend to erode and low flows tend to deposit and 903.8 where high flows tend to deposit and low flows tend to erode. Each plot shows river bed variation as a function of discharge at Lobith, where each data point represents bed elevation change for a range of mean daily discharge values obtained from flow duration curves for the data period, 2005-2021.

References

- Guan, M, Carrivick, J. L., Wright, N. G., Sleight, A., Staines, K. E. H. 2016. Quantifying the combined effects of multiple extreme floods on river channel geometry and flood hazards. *Journal of Hydrology* 538, 256-268.
- Sholtes, J. S., Yochum, S. E., Scott, J. A., Blesdoe, B. P. 2018. Longitudinal variability of geomorphic response to floods. *Earth Surface Processes and Landforms* 43, 3099-3113.
- Stover, S. C., Montgomery, S. R. 2001. Channel change and flooding, Skokomish River, Washington. *Journal of Hydrology* 243, 272-286.
- Van Denderen, R. P., Van Hoek, M., Van der Sleen, N., Reneerkens, M., Schielen, R. 2022. An interactive atlas of river morphodynamics. Abstract from NCR days 2022, Delft, Netherlands.
- Van Denderen, R. P. 2014. Bed level changes in the Waal during floods: an analysis of bed level measurements. MSc. Thesis, TU Delft.

* Corresponding author

Email address: sahrendt@uw.edu (S.M.Ahrendt)