



Delft University of Technology

Obstakels en openingen

van Gameren, D.E.

Publication date

2006

Document Version

Final published version

Citation (APA)

van Gameren, D. E. (2006). *Obstakels en openingen*. Delft University of Technology.

Important note

To cite this publication, please use the final published version (if applicable).
Please check the document version above.

Copyright

Other than for strictly personal use, it is not permitted to download, forward or distribute the text or part of it, without the consent of the author(s) and/or copyright holder(s), unless the work is under an open content license such as Creative Commons.

Takedown policy

Please contact us and provide details if you believe this document breaches copyrights.
We will remove access to the work immediately and investigate your claim.

This work is downloaded from Delft University of Technology.

For technical reasons the number of authors shown on this cover page is limited to a maximum of 10.

OBSTAKELS EN OPENINGEN

INTREEREDE 4 OKTOBER 2006
DICK VAN GAMEREN

BEELD


TU Delft

Technische Universiteit Delft Faculteit Bouwkunde

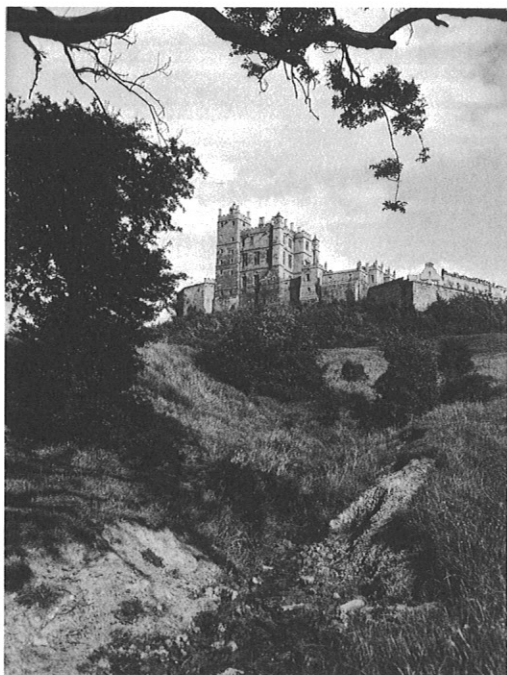
OBSTAKELS EN OPENINGEN

INTREEREDE UITGESPROKEN OP 4 OKTOBER 2006
TER GELEGENHEID VAN DE AANVAARDING VAN HET AMBT VAN HOGLERAAR
IN HET VAKGEBIED WONINGBOUW AAN DE FACULTEIT BOUWKUNDE
VAN DE TECHNISCHE UNIVERSITEIT DELFT DOOR

IR. D.E. VAN GAMEREN

BEELD

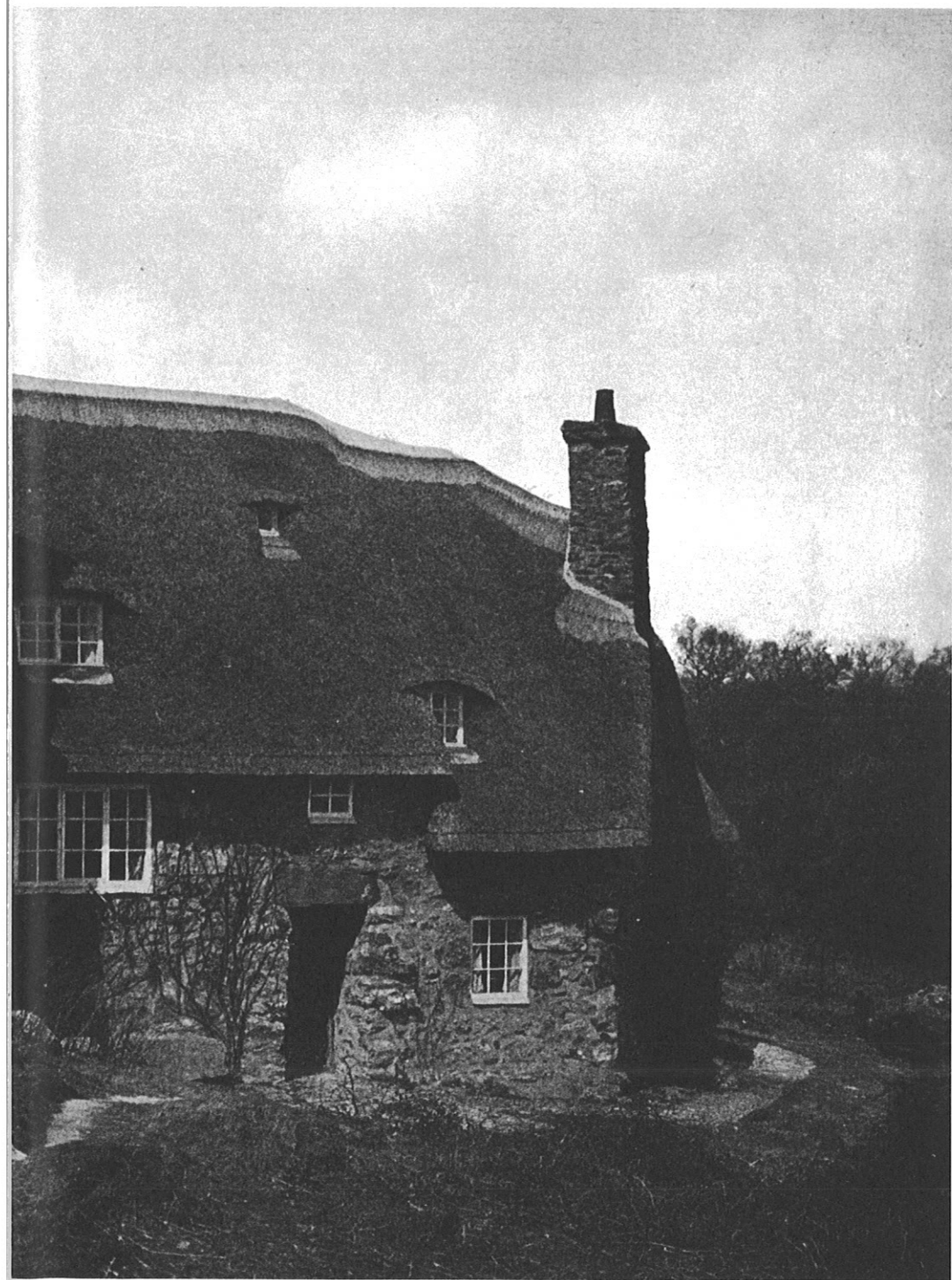




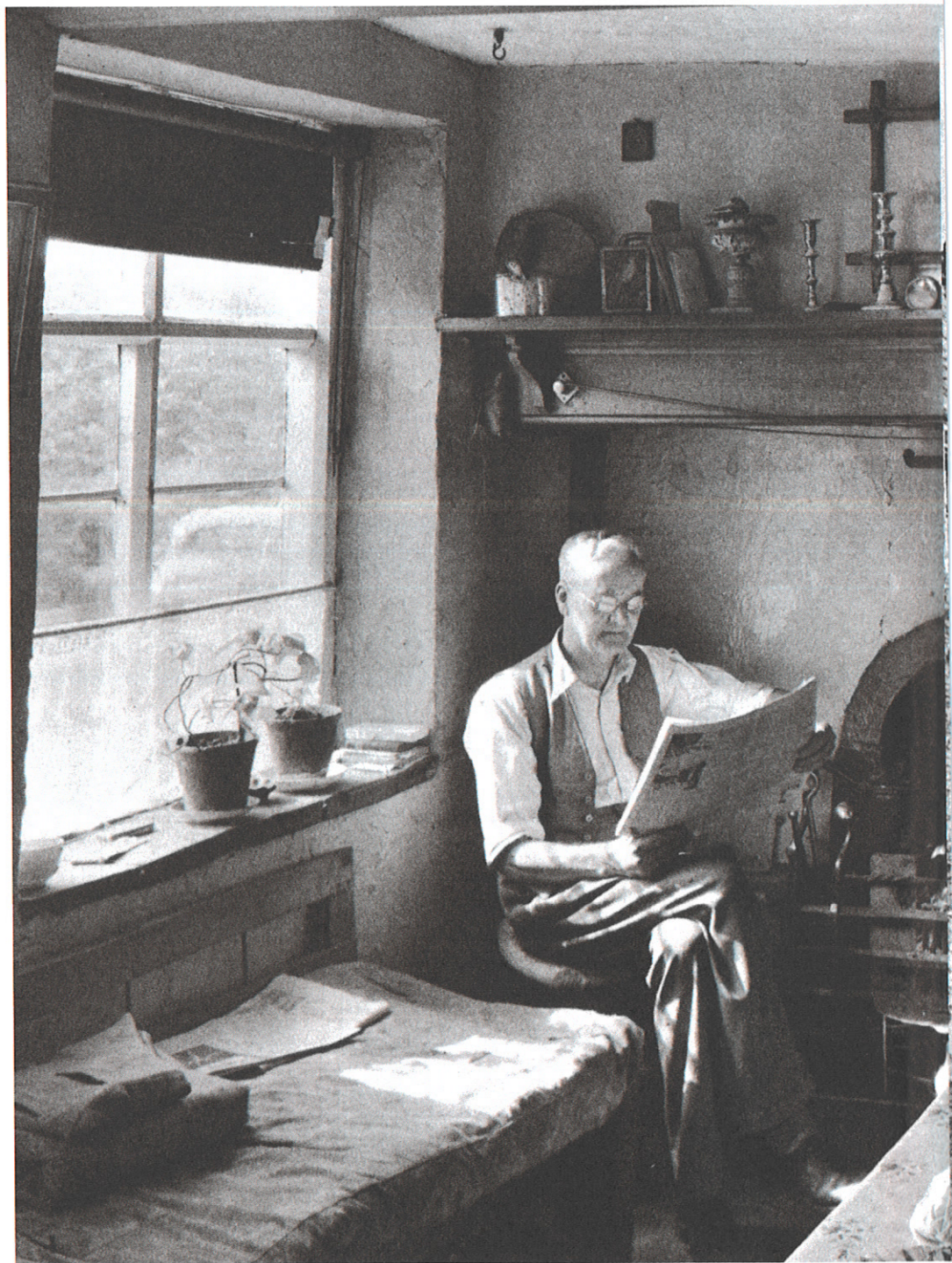
LIJST MET AFBEELDINGEN:

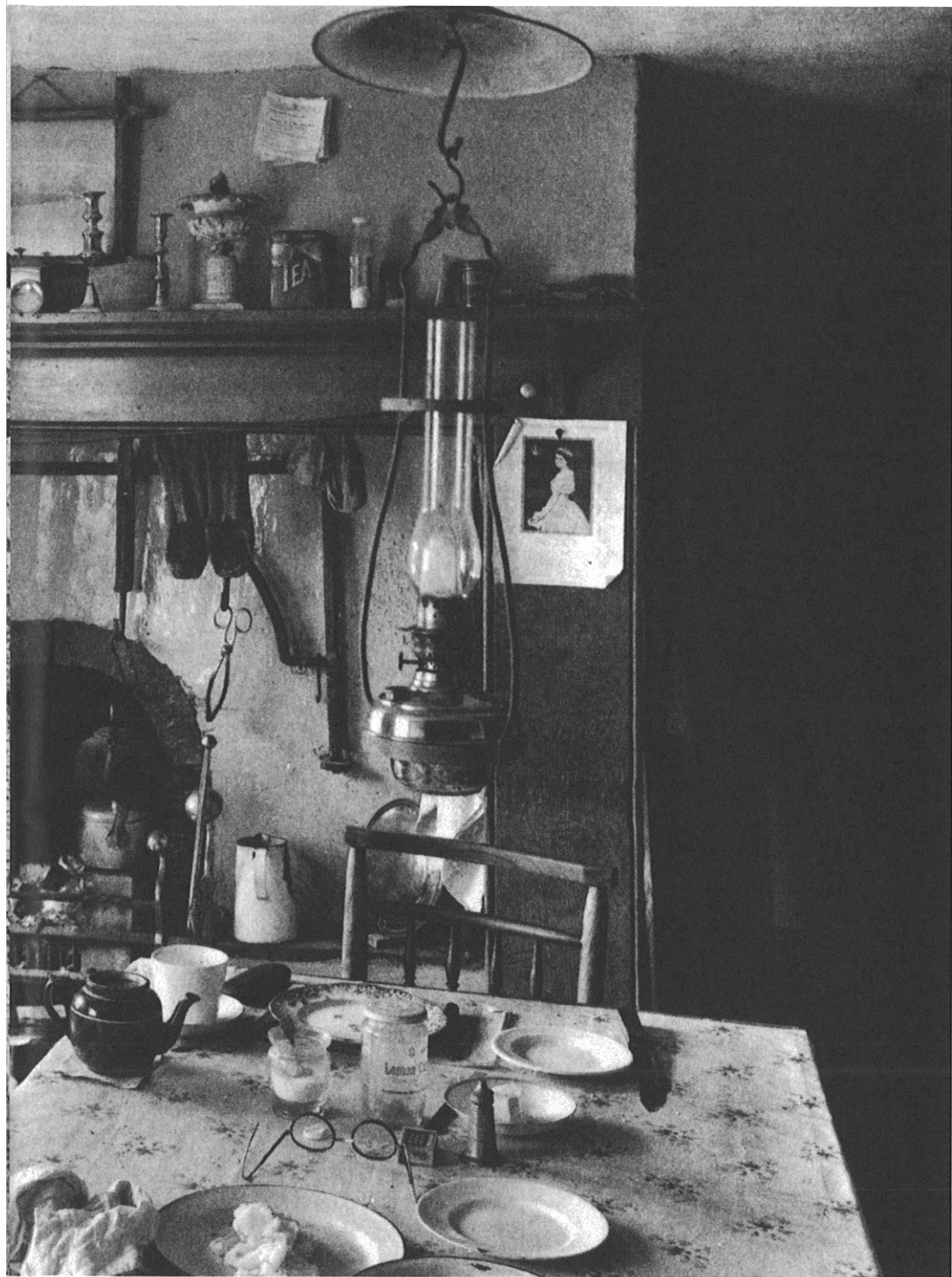
- 01. STONEYWELL COTTAGE**
1899, CHARNWOOD FOREST, LEICESTERSHIRE
(UK), ARCHITECT: ERNEST GIMSON
- 02. MINER'S COTTAGE**
LIGHTMOOR, SHROPSHIRE (UK)
- 03. RIJWONINGEN, WEISSENHOFSIEDLUNG**
1927, STUTTGART (D), ARCHITECT: J.J.P. OUD
- 04. HUIS 26 & 27, WEISSENHOFSIEDLUNG**
1927, STUTTGART (D),
ARCHITECT: JOSEF FRANK
- 05. ALBERT HALL MANSIONS**
1897, LONDEN (UK),
ARCHITECT: RICHARD NORMAN SHAW
- 06. STUDIES**
1907-1908, M. H. BAILLIE SCOTT
- 07. NETHERCOTE FARM**
1698, BOURTON-ON-THE-WATER,
GLOUCESTERSHIRE (UK)
- 08. INDUSTRIEGEBOUWEN**
- 09. DUBBELE VILLA, WEISSENHOFSIEDLUNG**
1927, STUTTGART (D), ARCHITECT:
LE CORBUSIER & PIERRE JEANNERET
- 10. SCHEETS, LE CORBUSIER**
- 11. SOUTHCOT PLACE, BATH, (UK)**
- 12. EL OUED, (ALGERIJE)**
- 13. KINGO HUIZEN**
1957, HELSINGØR (DK),
ARCHITECT: JØRN UTZON
- 14. WOONGEBOUW**
1970, RUNNADERN (CH),
ARCHITECT: ATELIER 5
- 15. INTERIEUR WOONGEBOUW**
1980, ROTTERDAM (NL) ARCHITECT: OFFICE
FOR METROPOLITAN ARCHITECTURE
- 16. IGA HAUS 13**
1995, STUTTGART (D), ARCHITECT: MECANOO
- 17. WONINGBOUW BORNEO SPORENBURG,**
1997, AMSTERDAM (NL), ARCHITECT:
NEUTELINGS RIEDIJK ARCHITECTEN
- 18. TUINDORP 'T LANSINK**
1910, HENGELO (NL)
- 19. VINEXWIJK**
ZOETERMEER (NL)
- 20. DE NIEUWE KAART VAN NEDERLAND**
- 21. MOERWIJK**
1956, DEN HAAG (NL)
- 22. EEMLAND**
PROVINCIE UTRECHT (NL)
- 23. LE CORBUSIER**
- 24. TEAM X**
- 25. LE CORBUSIER SCHEETS**
- 26. RUIMTE SCHEMA'S**
- 27. REQUIEM, FRAGMENT UIT 'KYRIE'**
1963-1965, GYÖRGY LIGETI
- 28. OBJECT (SOAP BUBBLE SET)**
1941, JOSEPH CORNELL
- 29-35. BOLSOVER CASTLE**
1612-1666, BOLSOVER, DERBYSHIRE (UK)
ARCHITECT: ROBERT, JOHN & HUNTINGDON
SMYTHSON



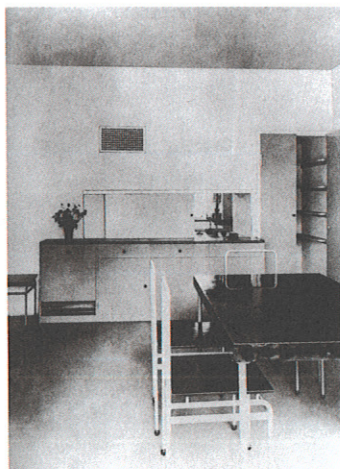


AFBEELDING 01

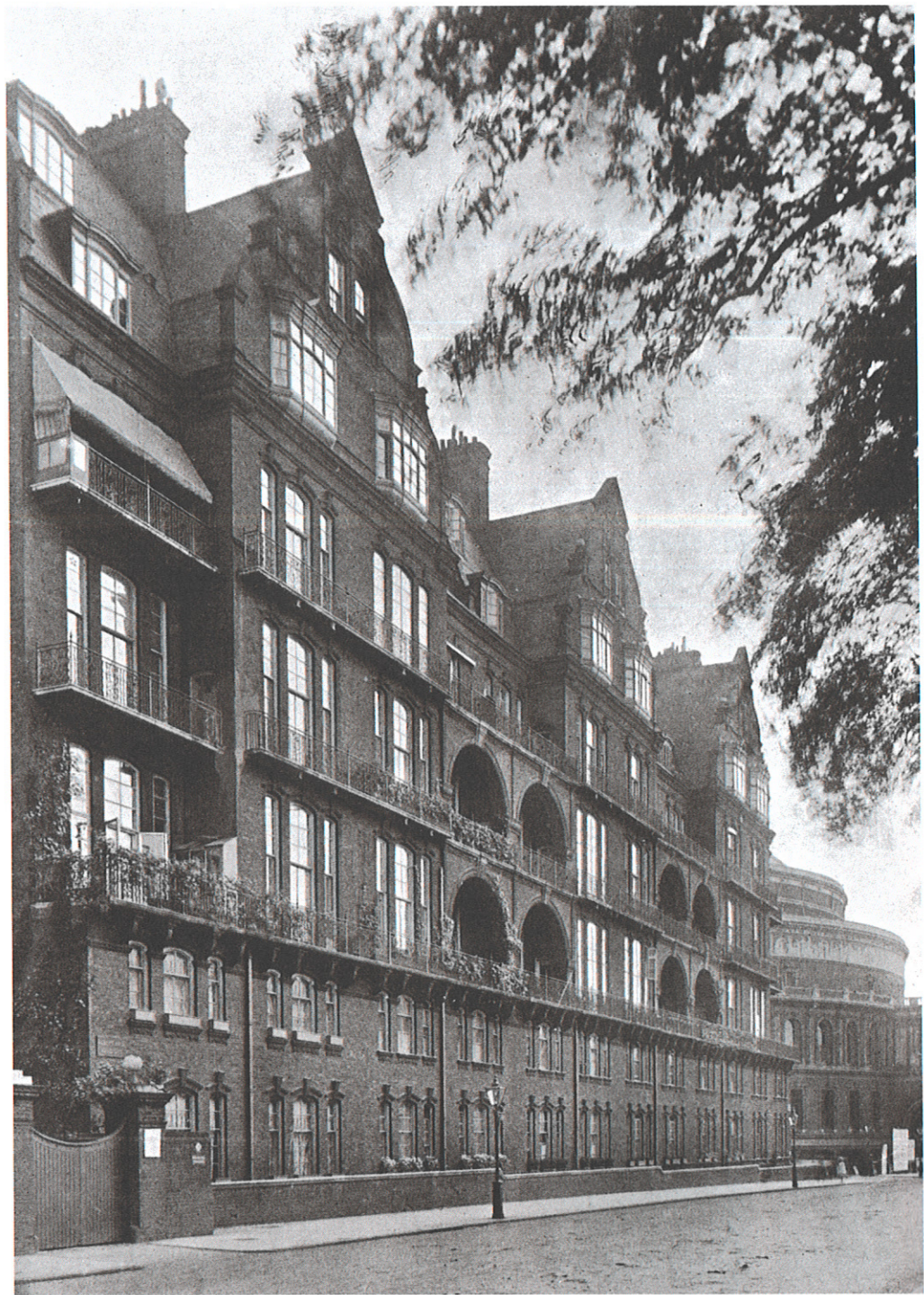


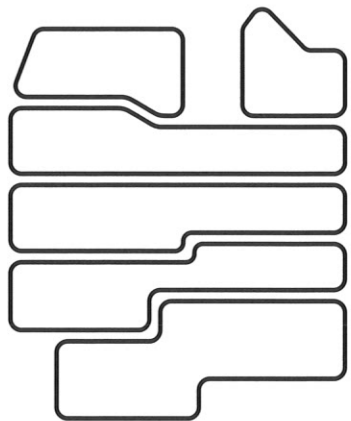
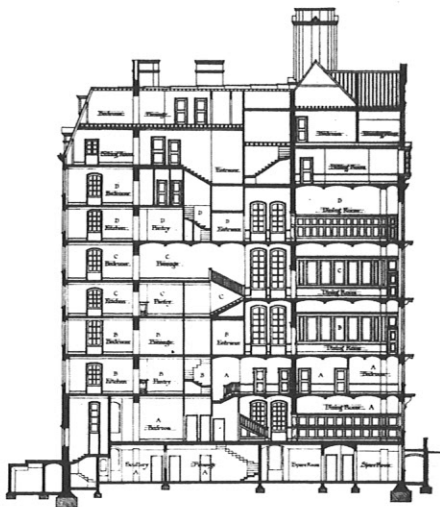


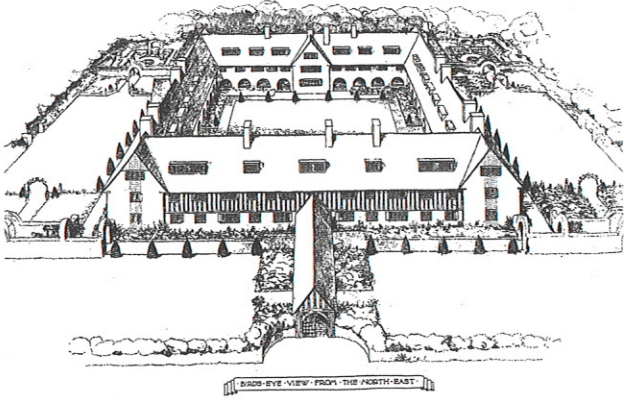
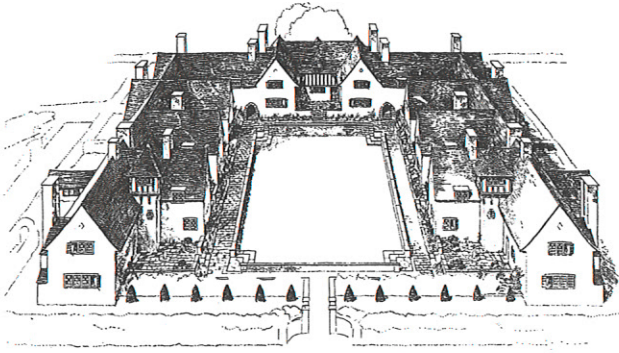
AFBEELDING 02

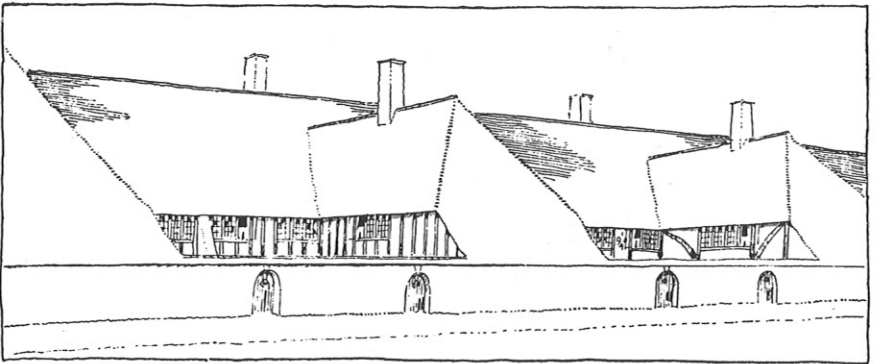








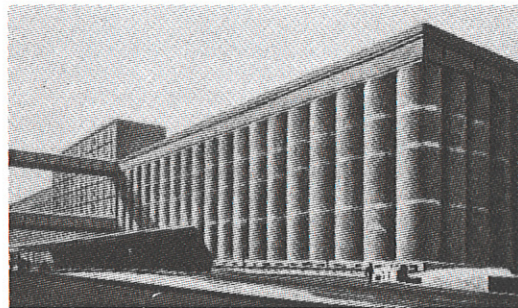
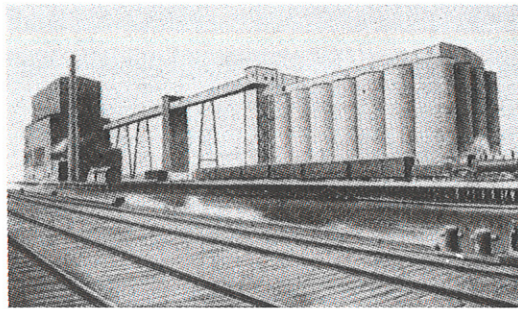


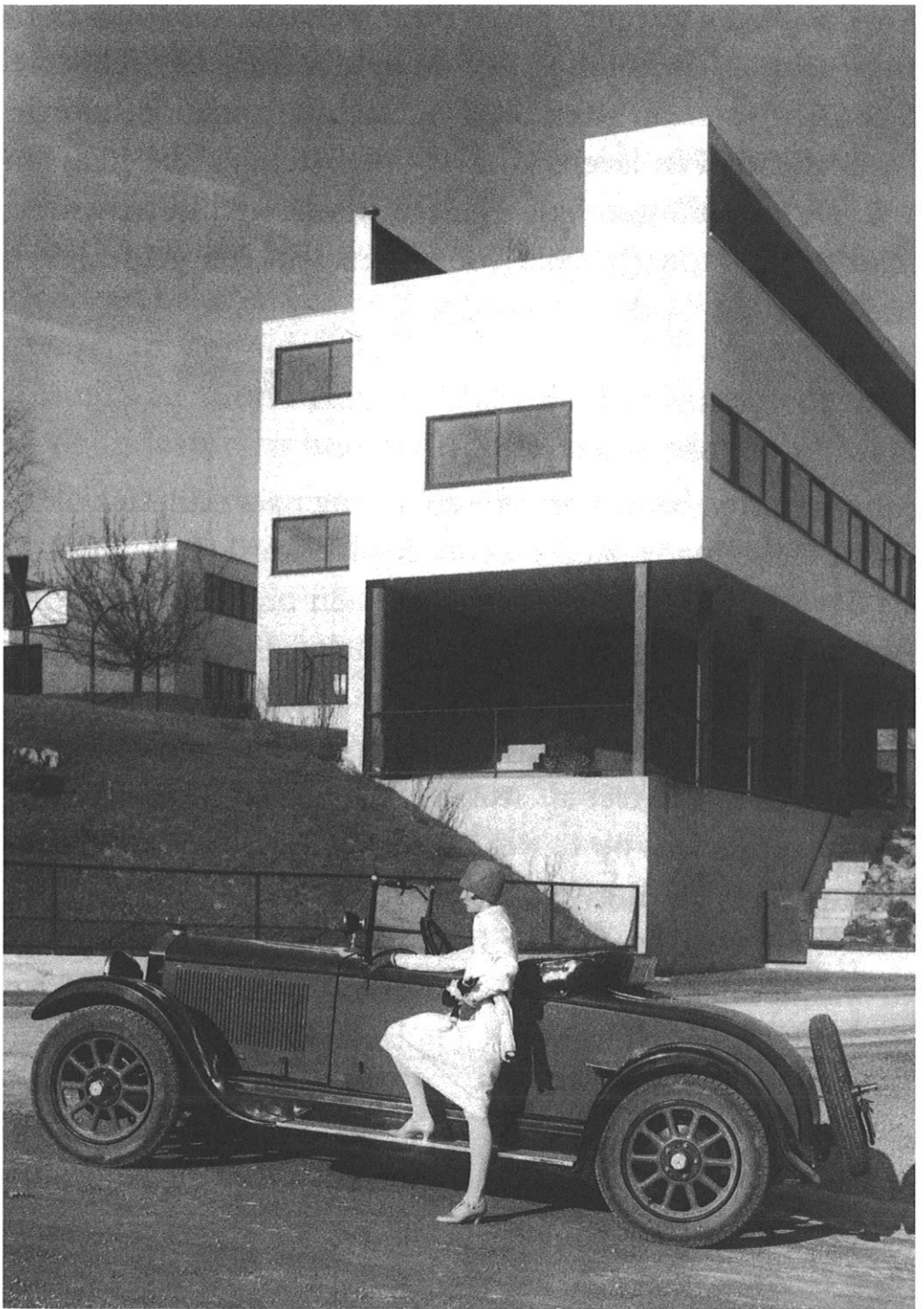


AFBEELDING 06









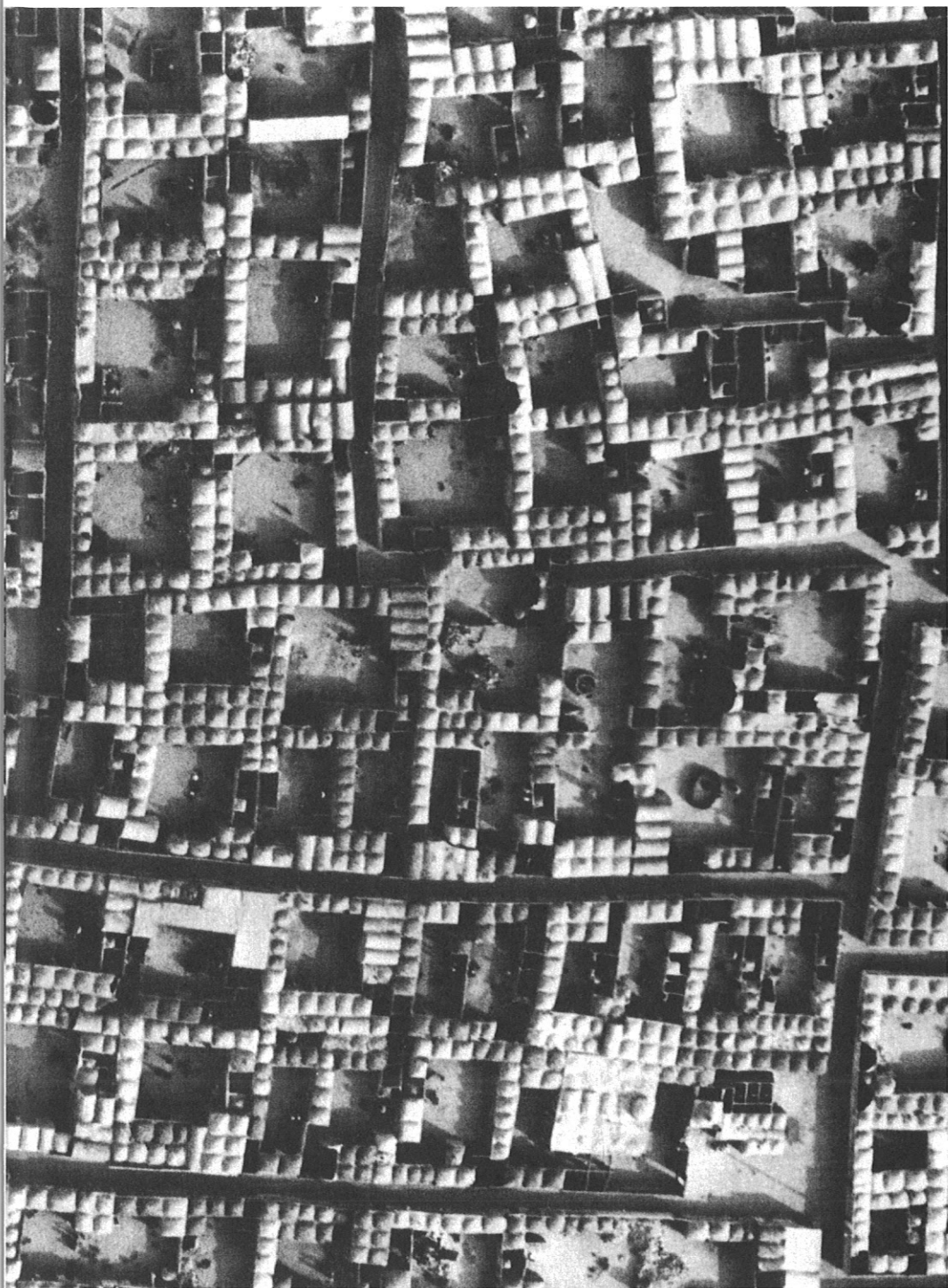






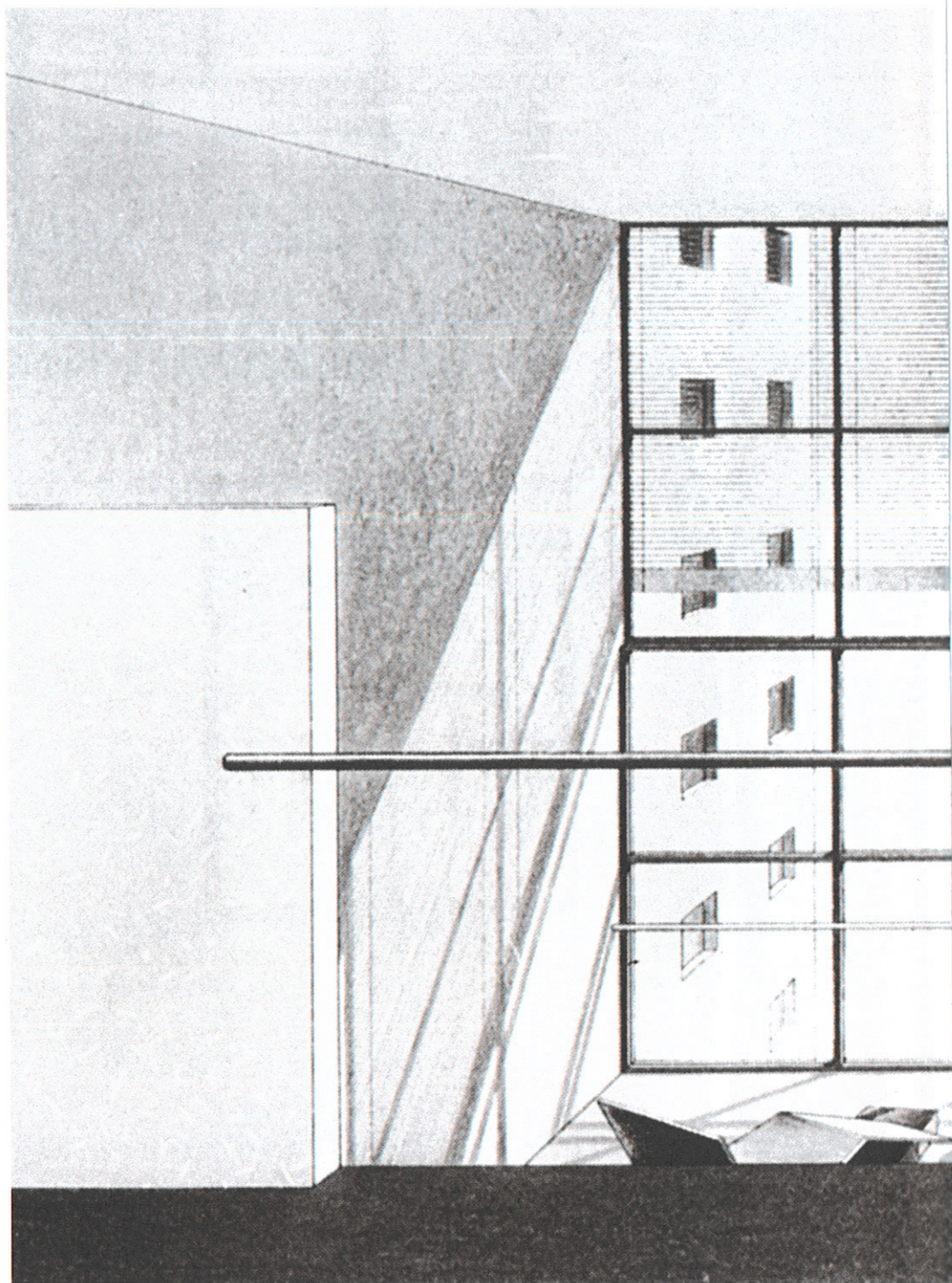


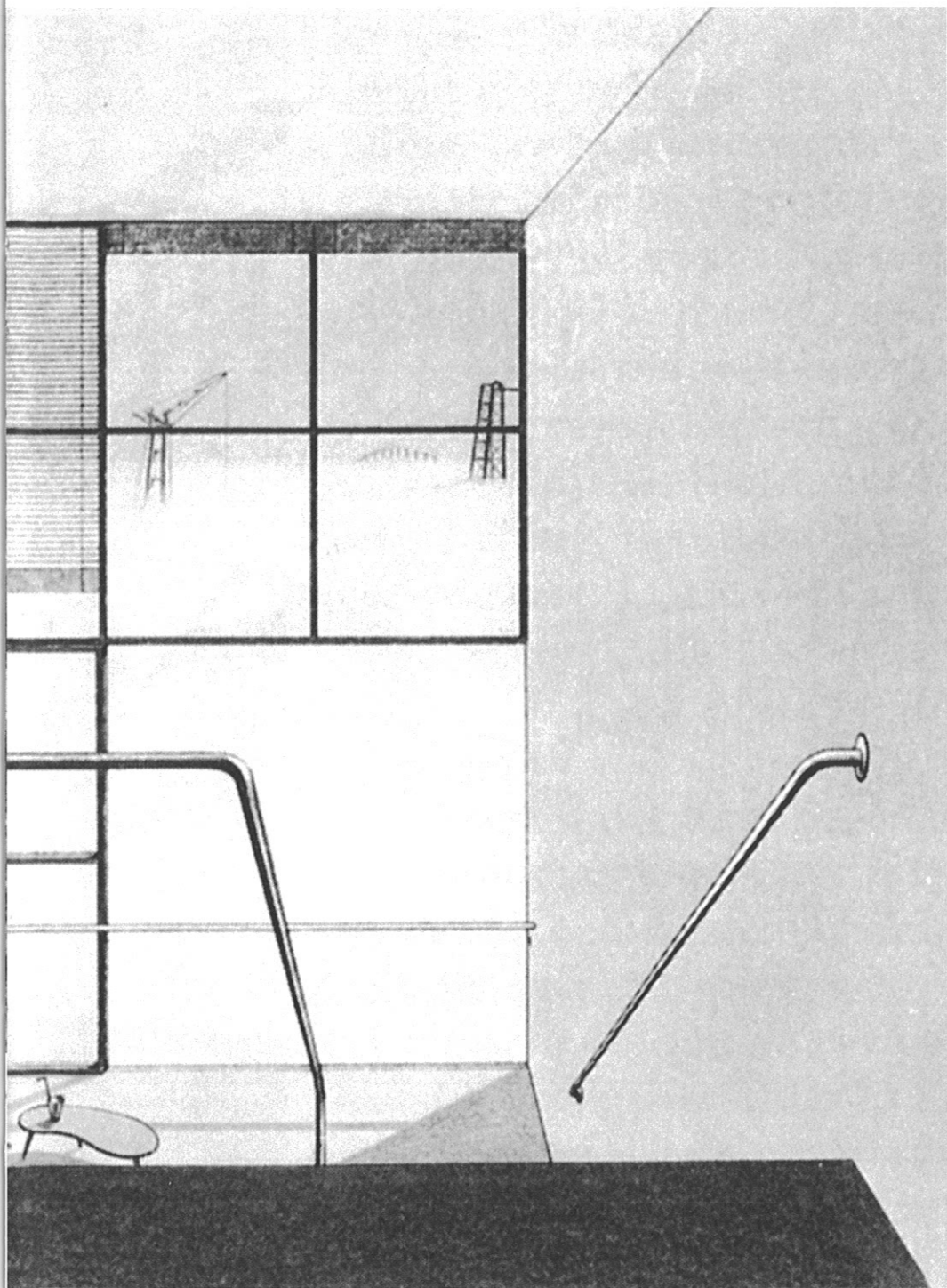












AFBEELDING 15





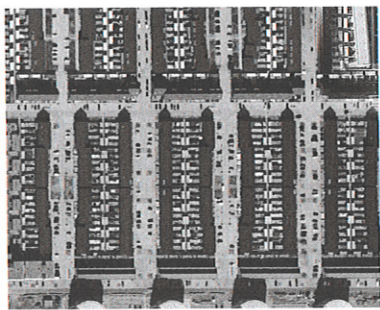


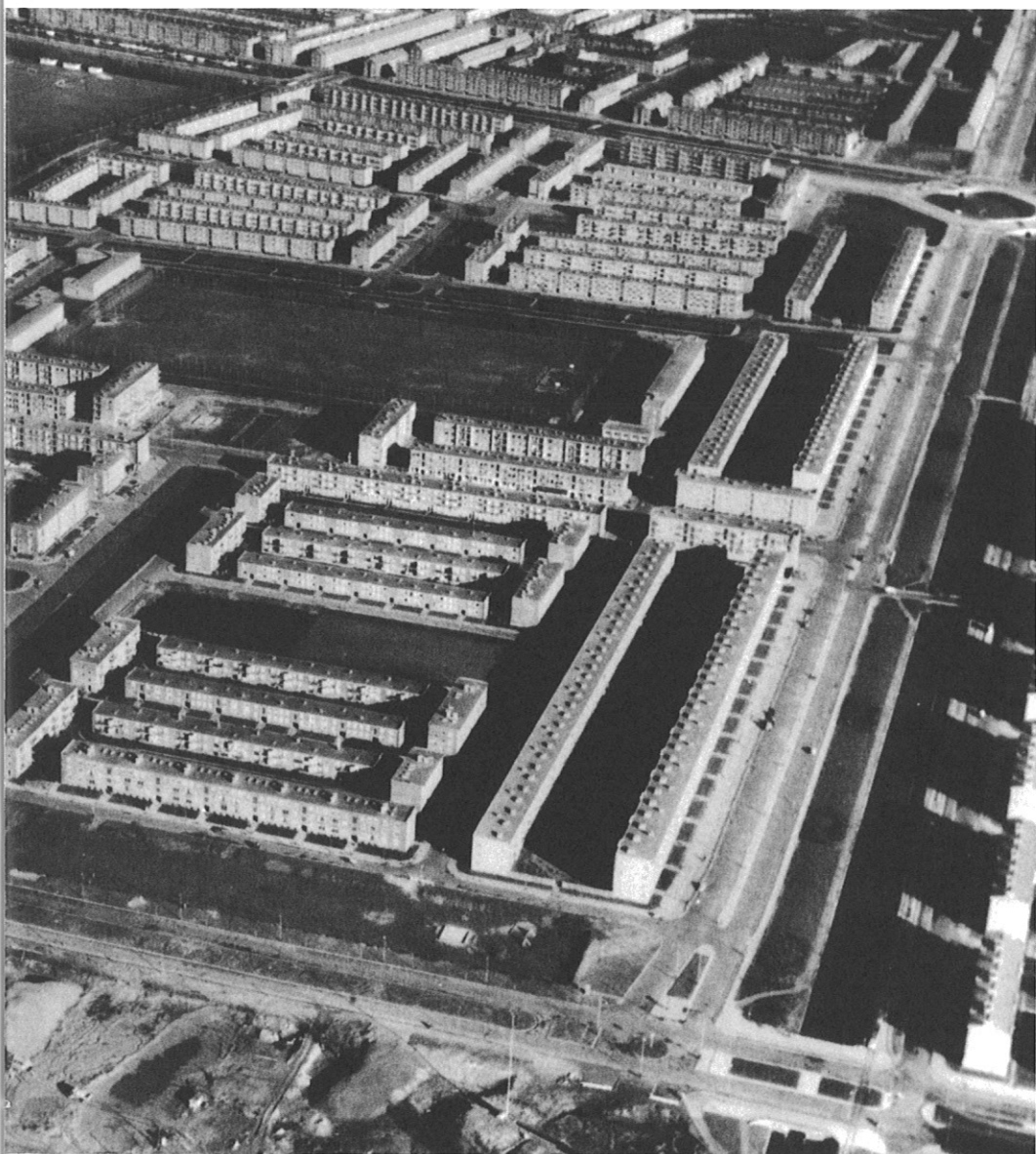


AFBEELDING 17



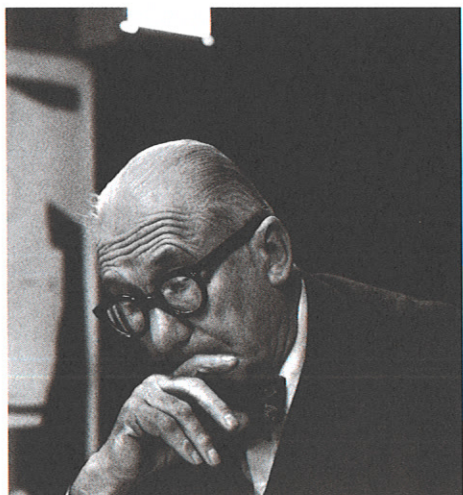


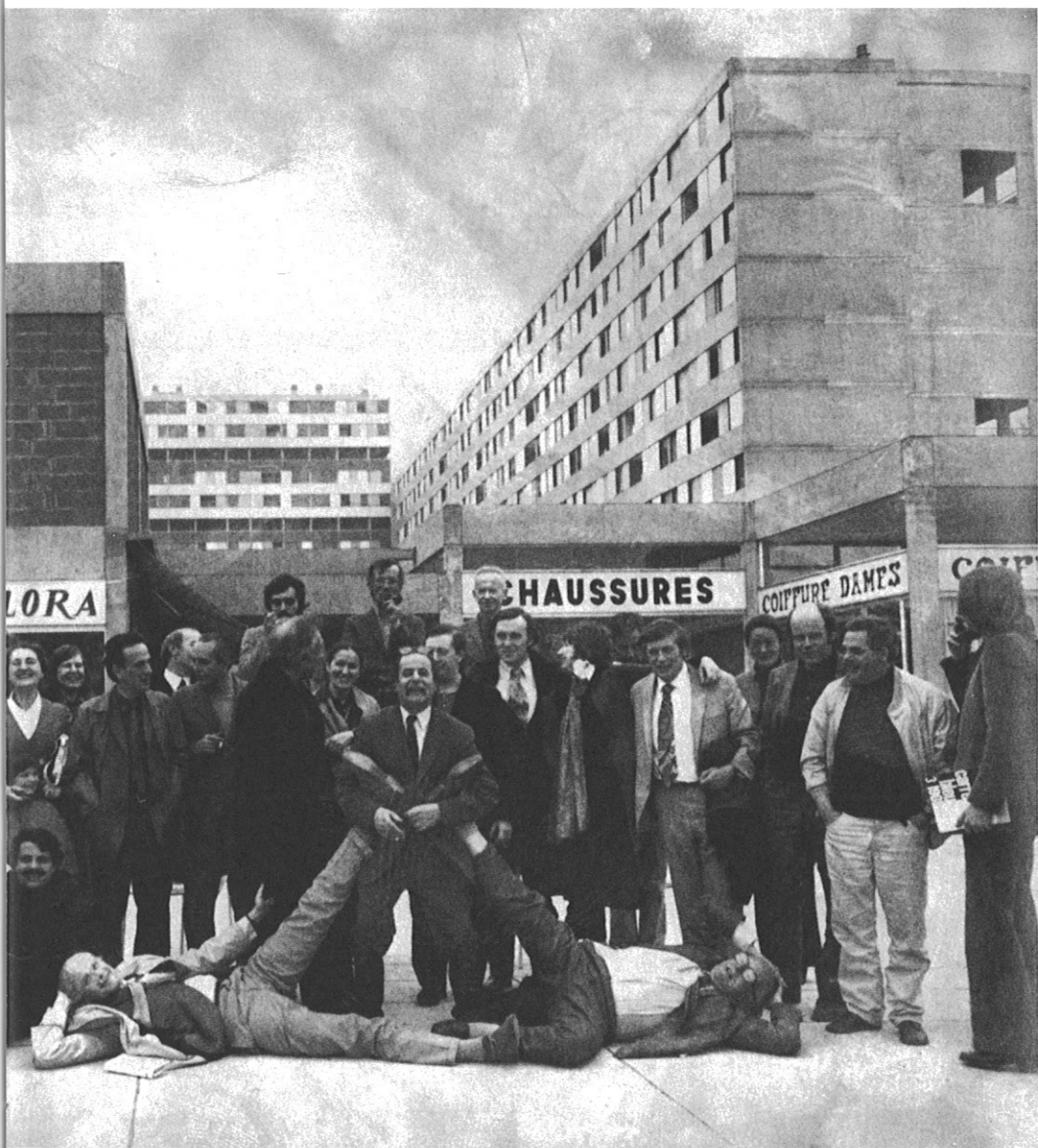


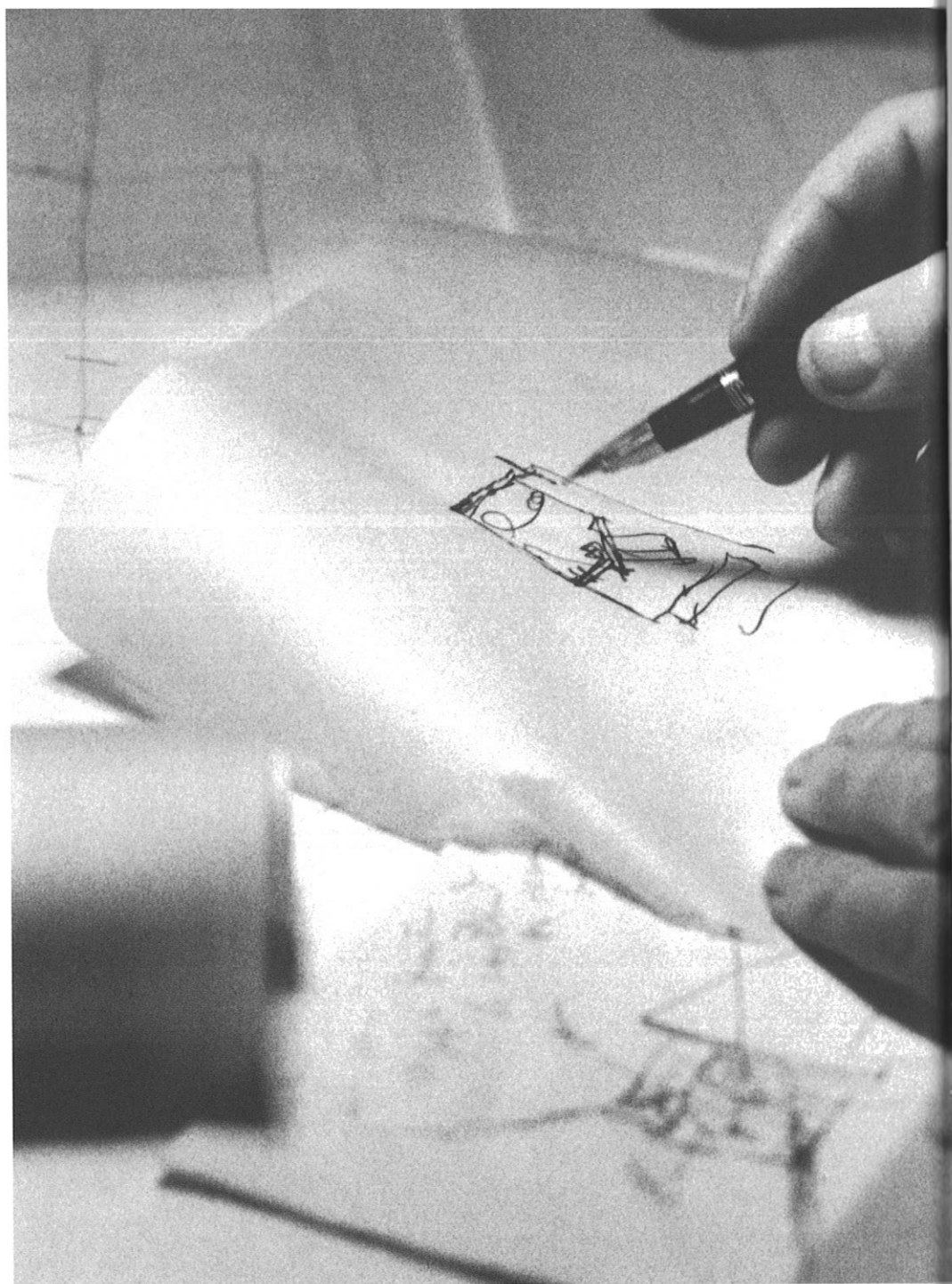




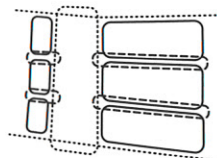
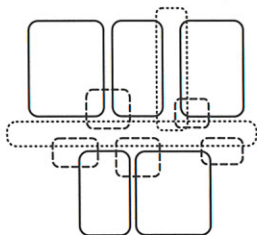
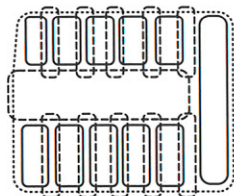
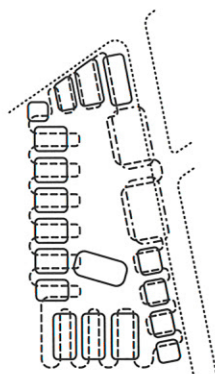
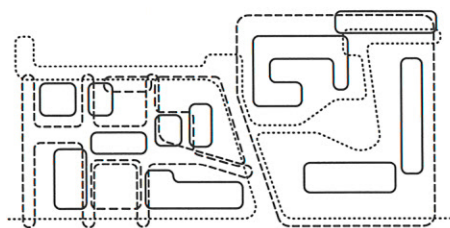
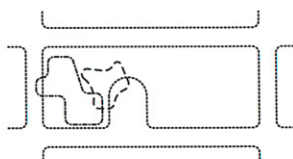
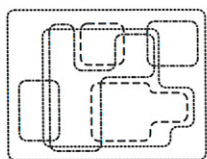
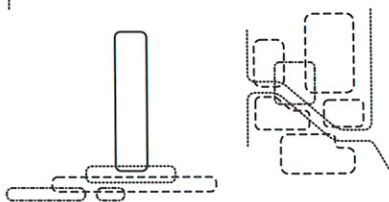
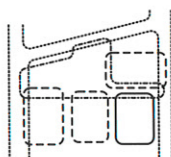
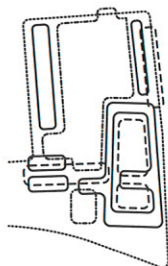
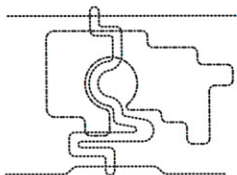
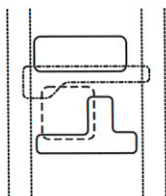
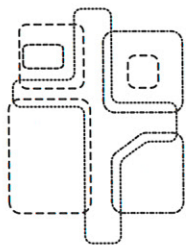








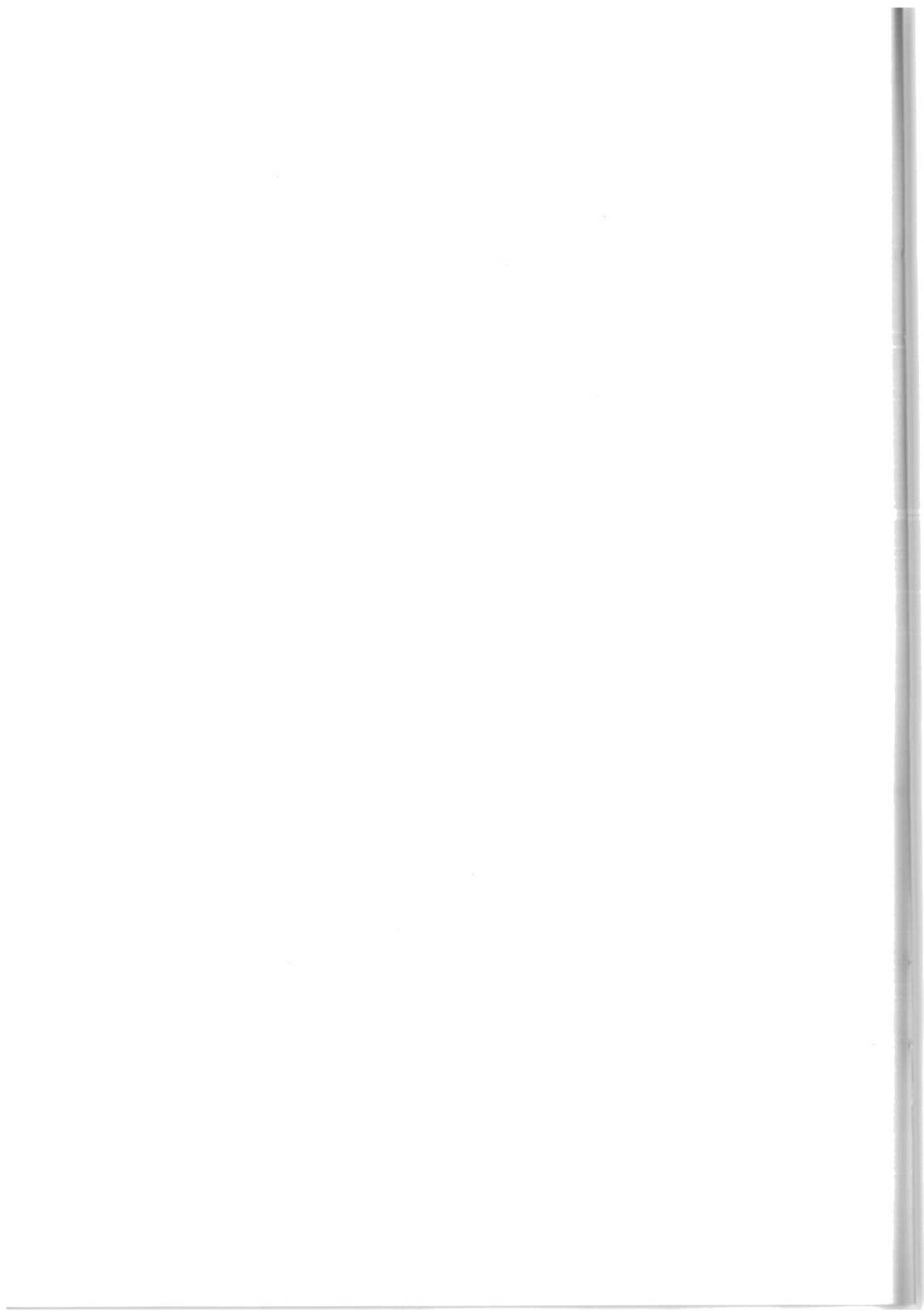


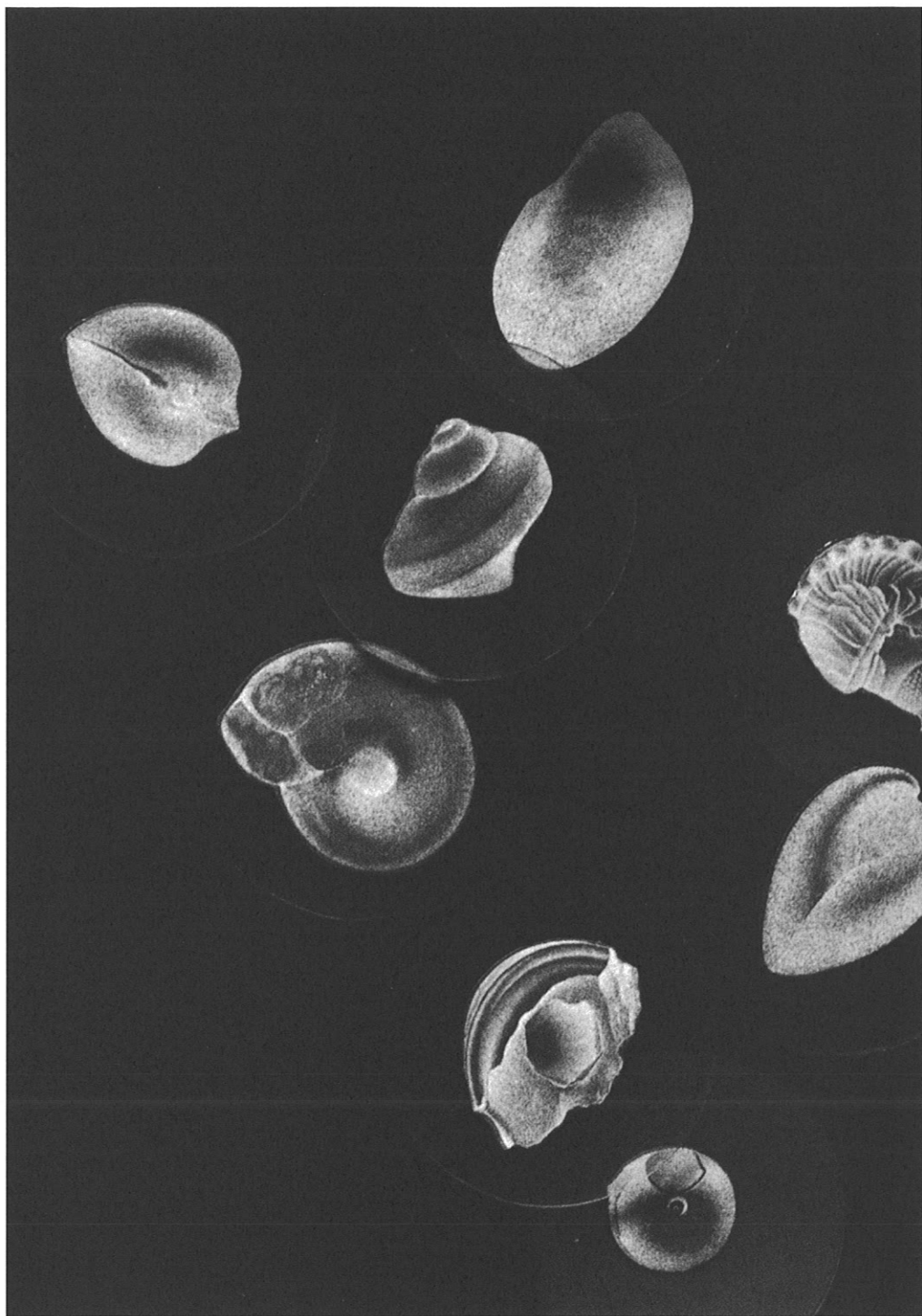


pp espressi

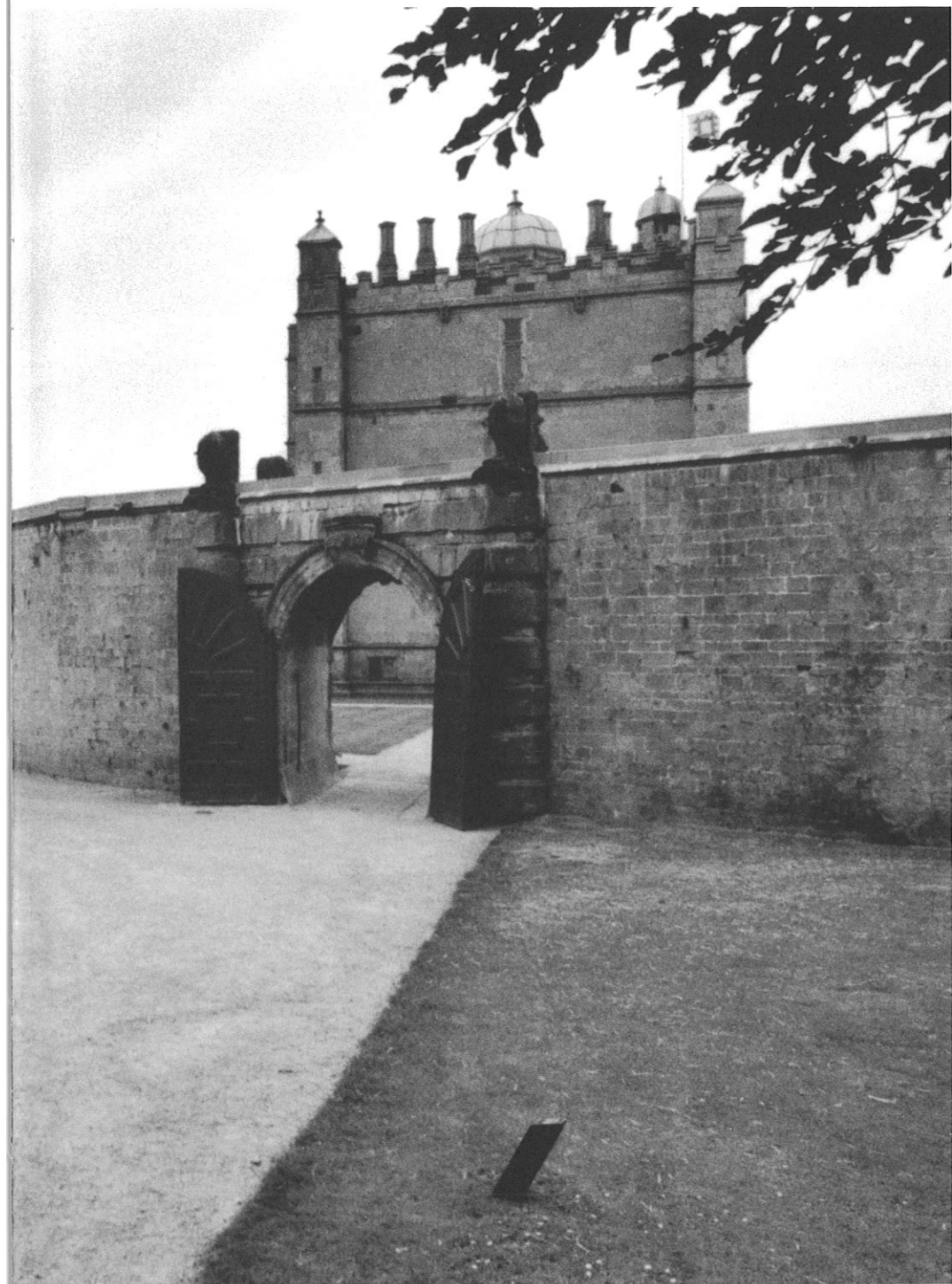
Handwritten musical score for page 18, featuring multiple staves with musical notation, dynamics, and performance instructions. The score includes:

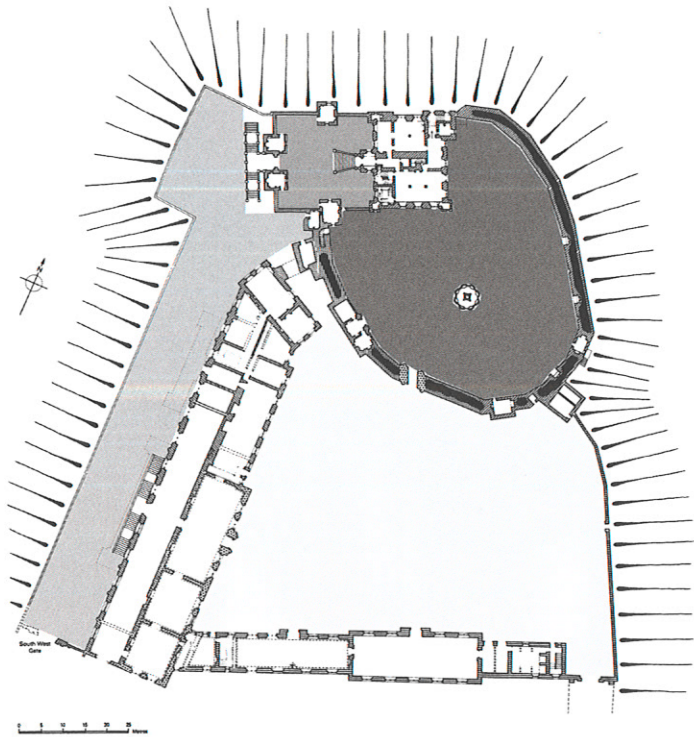
- Staff 1: *pp* KY-
- Staff 2: *pp* KY-
- Staff 3: *pp* KY-
- Staff 4: *pp* KY-
- Staff 5: *pp* KY-
- Staff 6: *pp* KY-
- Staff 7: *pp* KY-
- Staff 8: *pp* KY-
- Staff 9: *pp* KY-
- Staff 10: *pp* KY-
- Staff 11: *pp* KY-
- Staff 12: *pp* KY-
- Staff 13: *pp* KY-
- Staff 14: *pp* KY-
- Staff 15: *pp* KY-
- Staff 16: *pp* KY-
- Staff 17: *pp* KY-
- Staff 18: *pp* KY-
- Staff 19: *pp* KY-
- Staff 20: *pp* KY-
- Staff 21: *pp* KY-
- Staff 22: *pp* KY-
- Staff 23: *pp* KY-
- Staff 24: *pp* KY-
- Staff 25: *pp* KY-
- Staff 26: *pp* KY-
- Staff 27: *pp* KY-
- Staff 28: *pp* KY-
- Staff 29: *pp* KY-
- Staff 30: *pp* KY-
- Staff 31: *pp* KY-
- Staff 32: *pp* KY-
- Staff 33: *pp* KY-
- Staff 34: *pp* KY-
- Staff 35: *pp* KY-
- Staff 36: *pp* KY-
- Staff 37: *pp* KY-
- Staff 38: *pp* KY-
- Staff 39: *pp* KY-
- Staff 40: *pp* KY-
- Staff 41: *pp* KY-
- Staff 42: *pp* KY-
- Staff 43: *pp* KY-
- Staff 44: *pp* KY-
- Staff 45: *pp* KY-
- Staff 46: *pp* KY-
- Staff 47: *pp* KY-
- Staff 48: *pp* KY-
- Staff 49: *pp* KY-
- Staff 50: *pp* KY-
- Staff 51: *pp* KY-
- Staff 52: *pp* KY-
- Staff 53: *pp* KY-
- Staff 54: *pp* KY-
- Staff 55: *pp* KY-
- Staff 56: *pp* KY-
- Staff 57: *pp* KY-
- Staff 58: *pp* KY-
- Staff 59: *pp* KY-
- Staff 60: *pp* KY-
- Staff 61: *pp* KY-
- Staff 62: *pp* KY-
- Staff 63: *pp* KY-
- Staff 64: *pp* KY-
- Staff 65: *pp* KY-
- Staff 66: *pp* KY-
- Staff 67: *pp* KY-
- Staff 68: *pp* KY-
- Staff 69: *pp* KY-
- Staff 70: *pp* KY-
- Staff 71: *pp* KY-
- Staff 72: *pp* KY-
- Staff 73: *pp* KY-
- Staff 74: *pp* KY-
- Staff 75: *pp* KY-
- Staff 76: *pp* KY-
- Staff 77: *pp* KY-
- Staff 78: *pp* KY-
- Staff 79: *pp* KY-
- Staff 80: *pp* KY-
- Staff 81: *pp* KY-
- Staff 82: *pp* KY-
- Staff 83: *pp* KY-
- Staff 84: *pp* KY-
- Staff 85: *pp* KY-
- Staff 86: *pp* KY-
- Staff 87: *pp* KY-
- Staff 88: *pp* KY-
- Staff 89: *pp* KY-
- Staff 90: *pp* KY-
- Staff 91: *pp* KY-
- Staff 92: *pp* KY-
- Staff 93: *pp* KY-
- Staff 94: *pp* KY-
- Staff 95: *pp* KY-
- Staff 96: *pp* KY-
- Staff 97: *pp* KY-
- Staff 98: *pp* KY-
- Staff 99: *pp* KY-
- Staff 100: *pp* KY-

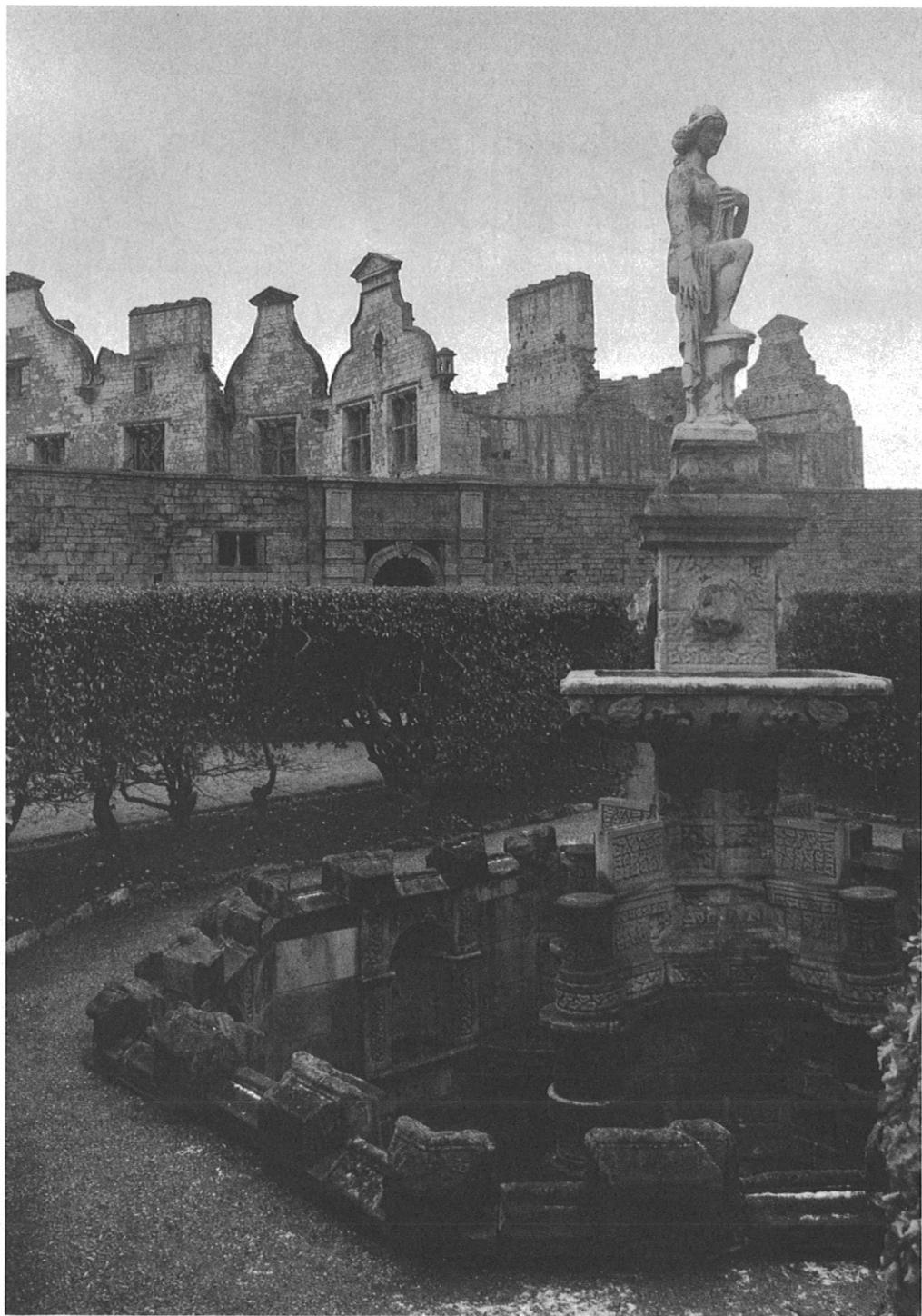




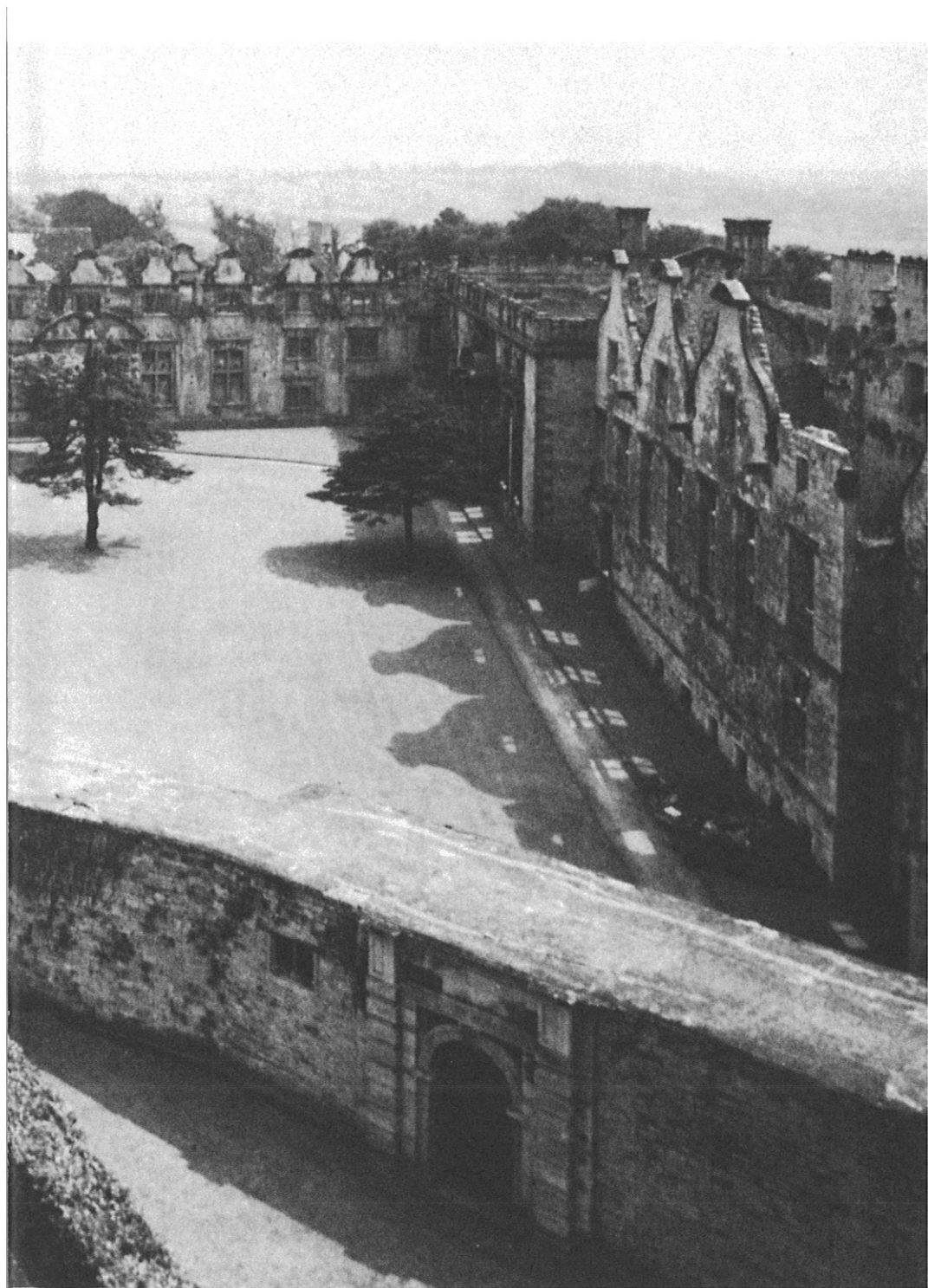




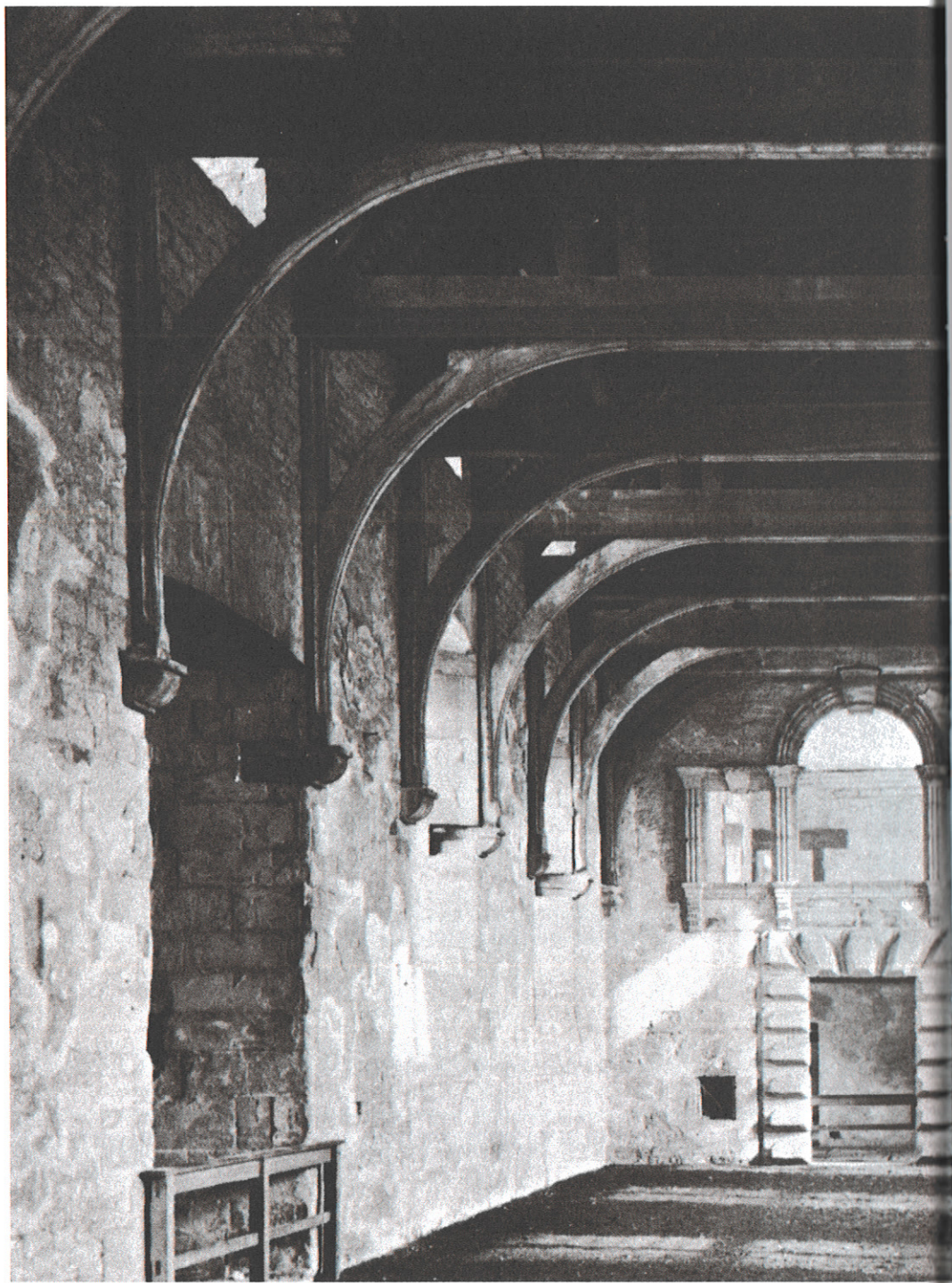


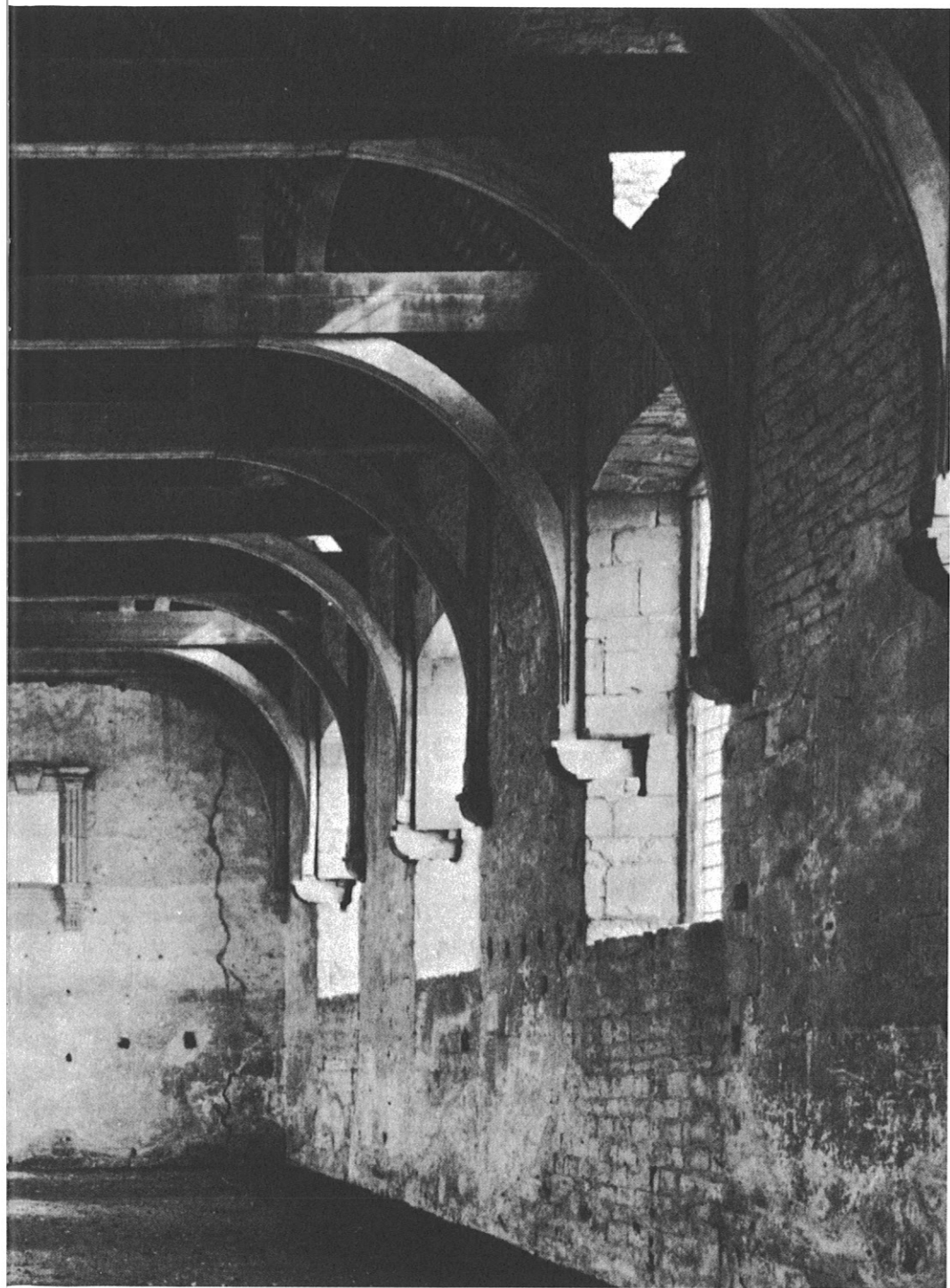






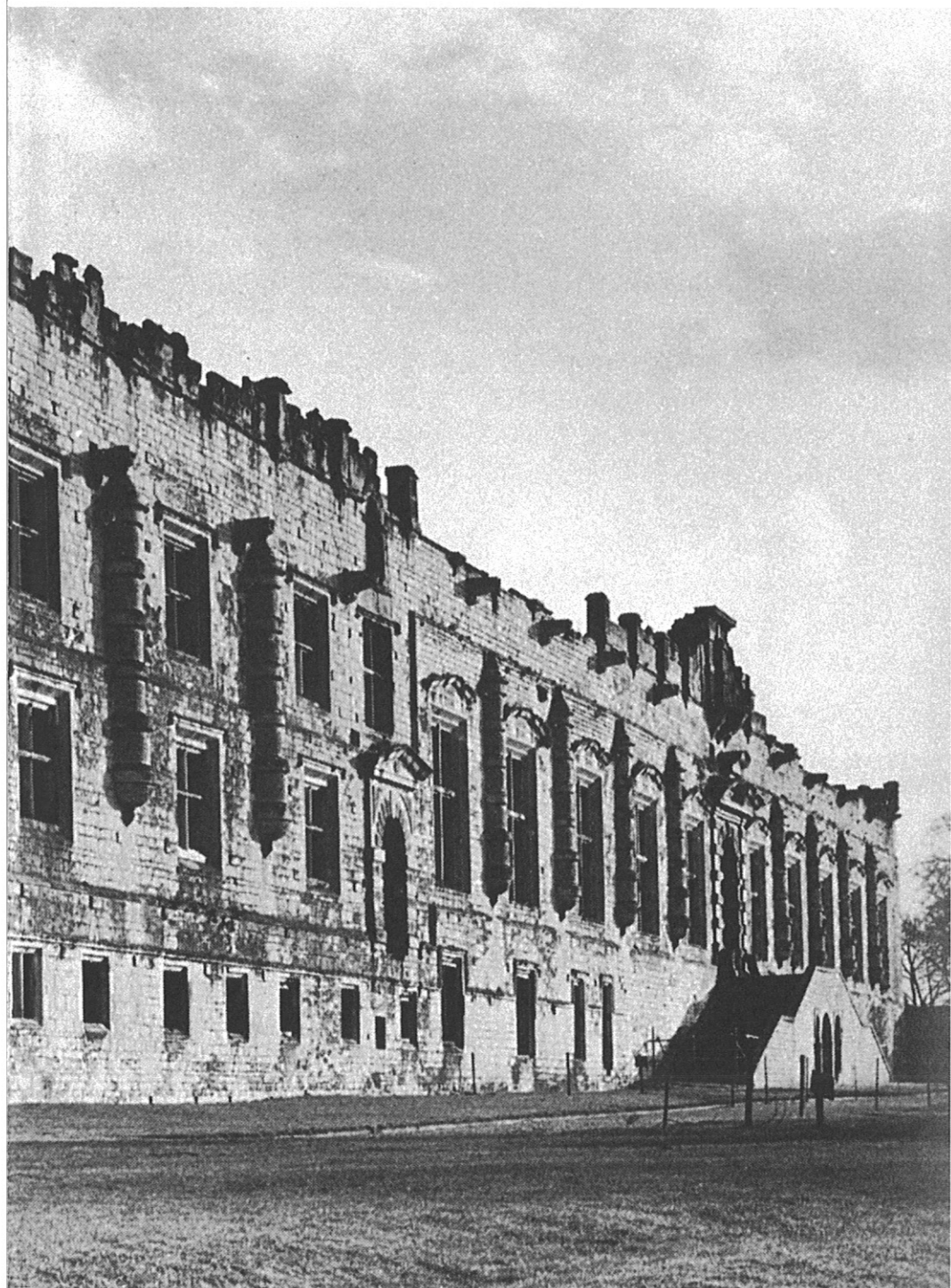
AFBEELDING 32





AFBEELDING 33

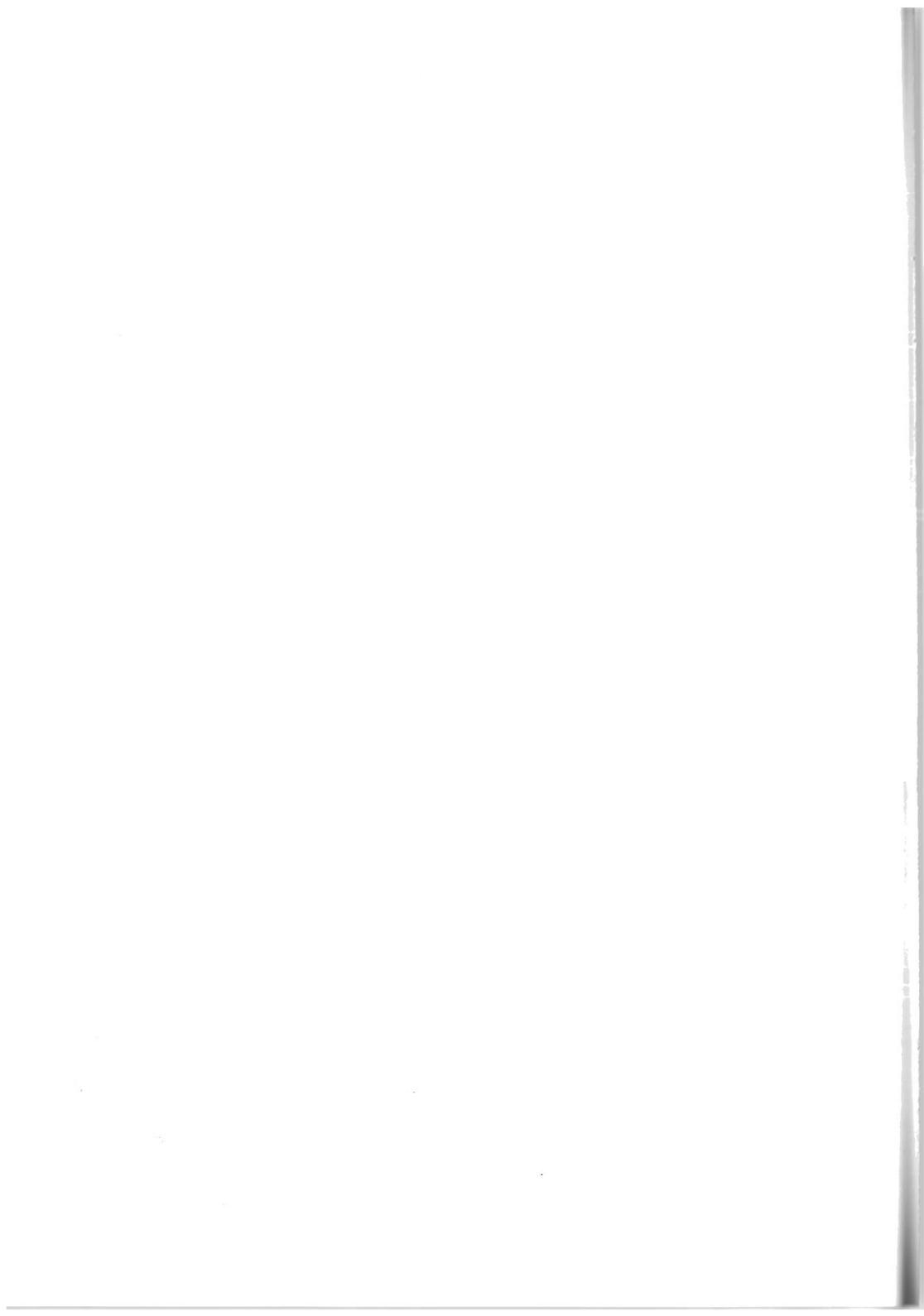




AFBEELDING 34







VERANTWOORDING BEELDEN:

00. BOLSOVER CASTLE

1612-1666, BOLSOVER, DERBYSHIRE (UK)
ARCHITECT: ROBERT, JOHN & HUNTINGDON SMYTHSON
BRON: 'BOLSOVER CASTLE'
P. A. FAULKNER; ENGLISH HERITAGE, LONDEN, 1985

01. STONEYWELL COTTAGE

1899, CHARNWOOD FOREST, LEICESTERSHIRE (UK)
ARCHITECT: ERNEST GIMSON
BRON: 'SMALL COUNTRY HOUSES OF TO-DAY, VOLUME TWO'
SIR LAWRENCE WEAVER; COUNTRY LIFE, LONDEN, 1919

02. MINER'S COTTAGE

BEGIN 18^E EEUW, LIGHTMOOR, SHROPSHIRE (UK)
BRON: 'ENGLISH COTTAGES AND FARMHOUSES'
OLIVE COOK & EDWIN SMITH; THAMES AND HUDSON, LONDEN, 1954

03. RIJWONINGEN, WEISSENHOFSIEDLUNG

1927, STUTTGART (D)
ARCHITECT: J.J.P. OUD
BRON: 'J.J.P. OUD, POETIC FUNCTIONALIST; THE COMPLETE WORKS'
E. TAVERNE; C. WAGENAAR & M. DE VLETTER; NAI PUBLISHERS,
ROTTERDAM, 2001

04. HUIS 26 & 27, WEISSENHOFSIEDLUNG

1927, STUTTGART (D)
ARCHITECT: JOSEF FRANK
BRON: 'BAU UND WOHNUNG'
WERNER GRÄFF (ED.); AKAD. VERLAG DR. FR. WEDEKIND & CO,
STUTTGART, 1927

05. ALBERT HALL MANSIONS

1879, LONDEN (UK)
ARCHITECT: RICHARD NORMAN SHAW
BRONNEN: 'FLATS; URBAN HOUSES & COTTAGE HOMES'
W. SHAW (ED.); HODDER & STOUGHTON, LONDEN, 1906
'RICHARD NORMAN SHAW'
ANDREW SAINT; YALE UNIVERSITY PRESS, NEW HAVEN & LONDEN, 1976

06. STUDIES, M. H. BAILLIE SCOTT

L. BOVEN: CLOSE PLOT 400, HAMPSTEAD HEATH GARDEN SUBURB, 1907, LONDEN (UK)
L. ONDER: WATERLOW COURT, HAMPSTEAD HEATH GARDEN SUBURB, 1908, LONDEN (UK)
BRON: 'BAILLIE SCOTT, THE ARTISTIC HOUSE'
DIANE HAIGH; ACADEMY EDITIONS LTD, LONDEN, 1995
R. ONDER: A TERRACED HOUSE (PROJECT)
BRON: 'HOUSES AND GARDENS, ARTS AND CRAFTS INTERIORS'
M.H. BAILLIE SCOTT; GEORGE NEWNES LTD, 1906

07. NETHERCOTE FARM

1689, BOURTON-ON-THE-WATER, GLOUCESTERSHIRE (UK)
BRON: 'ENGLISH COTTAGES AND FARMHOUSES'
OLIVE COOK & EDWIN SMITH; THAMES AND HUDSON, LONDEN, 1954

08. INDUSTRIEGEBOUWEN

BRON: 'L' ESPRIT NOUVEAU NR. 1'
LE CORBUSIER; SAUGNIER; PARIJS, OKTOBER 1920

09. DUBBELE VILLA, WEISSENHOF SIEDLUNG

1927, STUTTGART (D)

ARCHITECT: LE CORBUSIER & PIERRE JEANNERET

BRON: ADVERTENTIE VOOR MERCEDES BENZ, 1927
DAIMLERCHRYSLER CLASSIC, CORPORATE ARCHIVES

10. SCHETS, LE CORBUSIER

BRON: 'LA MAISON DE L' HOMME'

LE CORBUSIER; 1941

11. SOUTHCOT PLACE

BATH (UK)

BRON: 'WITHOUT RHETORIC; AN ARCHITECTURAL AESTHETIC, 1955-1972'

ALISON & PETER SMITHSON; LATIMER NEW DIMENSIONS LIMITED, LONDON, 1973

12. EL OUED

ALGERIJE

BRON: 'DER MENSCH AUF SEINER ERDE, EIN FLUGBILD'

GEORG GERSTER; INTERCONTINENTAL PUBLISHING CO, HONG KONG, 1976

13. KINGO HUIZEN

1957, HELSINGØR (DK)

ARCHITECT: JØRN UTZON

BRON: 'JØRN UTZON LOGBOOK VOLUME 1: THE COURTYARD HOUSES'

MOGENS PRIP-BUUS (ED.); EDITION BLØNDAL, HELLERUP, 2004

14. WOONGEBOUW

1970, BRUNNADERN (CH)

ARCHITECT: ATELIER 5

BRON: 'ATELIER 5'

ATELIER 5; AMMANN VERLAG, ZÜRICH, 1986

15. INTERIEUR WOONGEBOUW

1980, ROTTERDAM (NL)

ARCHITECT: OFFICE FOR METROPOLITAN ARCHITECTURE

BRON: 'IJPLEIN, EEN SPEURTOCHT NAAR NIEUWE COMPOSITORISCHE MIDDELEN'

BERNARD LEUPEN; 010 PUBLISHERS, ROTTERDAM, 1989

16. IGA HAUS 13

1993, STUTTGART (D)

ARCHITECT: MECANOO

BRON: 'MECANOO'

KEES SOMER; 010 PUBLISHERS, ROTTERDAM, 1995

17. WONINGBOUW BORNEO SPORENBURG

1997, AMSTERDAM (NL)

ARCHITECT: NEUTELINGS RIEDIJK ARCHITECTEN

BRON: 'EL CROQUIS 94: NEUTELINGS RIEDIJK 1992-1999'

RICHARD C. LEVENE & FERNANDO MÁRQUEZ CECILIA (ED.); EL CROQUIS EDITORIAL, MADRID, 1999

18. TUINDORP 'T LANSINK

1910, HENGELO (NL)

BRON: 'TUINSTEDEN'

G. FEENSTRA; VAN MANTGEM & DE DOES, AMSTERDAM, 1920

19. VINEXWIJK

ZOETERMEER (NL)

BRON: GOOGLE EARTH

20. DE NIEUWE KAART VAN NEDERLAND

2006

BRON: NIROV, DEN HAAG

21. MOERWIJK

1956, DEN HAAG (NL)

BRON: 'DEN HAAG ZUIDWEST. EEN NAOORLOGS STADSDEEL IN VERANDERING'
E. AGRICOLA; A. BOUWHUIS; R. GEELHOED; G. GIELE; W. JANSSEN & H. PRONK;
UITGEVERIJ THOTH, BUSSUM, 2002

22. EEMLAND

PROVINCIE UTRECHT (NL)

BRON: 'HET VERZONNEN LAND, NEDERLANDSE LANDSCHAPSARCHITECTUUR IN
VOGELVLUCHT'
PETER VAN BOLHUIS; UITGEVERIJ BLAUWDRIJK, WAGENINGEN, 2004

23. LE CORBUSIER

BRON: 'LE CORBUSIER; RENÉ BURRI; MAGNUM PHOTOS'
ARTHUR RÜEGG; BIRKHÄUSER, BASEL, 1999

24. TEAM X

1971, IN TOULOUSE

BRON: 'TEAM X 1953-81, IN SEARCH OF A UTOPIA OF THE PRESENT'
MAX RISSELADA & DIRK VAN DEN HEUVEL; NAI PUBLISHERS, ROTTERDAM, 1999

25. LE CORBUSIER SCHETST

BRON: 'LE CORBUSIER; RENÉ BURRI; MAGNUM PHOTOS'
ARTHUR RÜEGG; BIRKHÄUSER, BASEL, 1999

26. RUIMTE SCHEMA'S

BRON: 'REVISIES VAN DE RUIMTE'
DICK VAN GAMEREN; NAI PUBLISHERS, ROTTERDAM, 2005

27. REQUIEM, FRAGMENT UIT 'KYRIE'

1963-1965, GYÖRGY LIGETI

28. OBJECT (SOAP BUBBLE SET)

1941, JOSEPH CORNELL

BRON: 'JOSEPH CORNELL, SHADOWPLAY ETERNIDAY'
L. ROSCOE HARTIGAN; R. VINE, R. LEHRMAN & W. HOPPS; THAMES AND HUDSON,
LONDEN, 2003

29-35. BOLSOVER CASTLE

1612-1666, BOLSOVER, DERBYSHIRE (UK)

ARCHITECT: ROBERT, JOHN & HUNTINGDON SMYTHSON

BRONNEN: SEBASTIAAN KAAL (29; 35)

'BOLSOVER CASTLE'

P. A. FAULKNER; ENGLISH HERITAGE, LONDEN, 1985 (30)

'ROBERT SMYTHSON & THE ELIZABETHAN COUNTRY HOUSE'

MARK GIROUARD; YALE UNIVERSITY PRESS, NEW HAVEN & LONDEN, 1983 (31-34)

