

Age-dependent changes in arterial blood pressure in neonates during the first week of life reference values and development of a model

van Zadelhoff, Arjan C.; Poppe, Jarinda A.; Willemsen, Sten; Mauff, Katya; van Weteringen, Willem; Goos, Tom G.; Reiss, Irwin K.M.; Vermeulen, Marijn J.; de Graaff, Jurgen C.

DOI

[10.1016/j.bja.2023.01.024](https://doi.org/10.1016/j.bja.2023.01.024)

Publication date

2023

Document Version

Final published version

Published in

British Journal of Anaesthesia

Citation (APA)

van Zadelhoff, A. C., Poppe, J. A., Willemsen, S., Mauff, K., van Weteringen, W., Goos, T. G., Reiss, I. K. M., Vermeulen, M. J., & de Graaff, J. C. (2023). Age-dependent changes in arterial blood pressure in neonates during the first week of life: reference values and development of a model. *British Journal of Anaesthesia*, 130(5), 585-594. <https://doi.org/10.1016/j.bja.2023.01.024>

Important note

To cite this publication, please use the final published version (if applicable).
Please check the document version above.

Copyright






Other than for strictly personal use, it is not permitted to download, forward or distribute the text or part of it, without the consent of the author(s) and/or copyright holder(s), unless the work is under an open content license such as Creative Commons.

Takedown policy

Please contact us and provide details if you believe this document breaches copyrights.
We will remove access to the work immediately and investigate your claim.

PAEDIATRIC ANAESTHESIA

Age-dependent changes in arterial blood pressure in neonates during the first week of life: reference values and development of a model

Arjan C. van Zadelhoff^{1,2} , Jarinda A. Poppe² , Sten Willemsen^{3,4}, Katya Mauff³, Willem van Weteringen⁵ , Tom G. Goos^{2,6} , Irwin K. M. Reiss², Marijn J. Vermeulen² and Jurgen C. de Graaff^{1,*} 

¹Department of Anesthesiology, Erasmus MC Sophia Children's Hospital, Rotterdam, the Netherlands, ²Department of Pediatrics, Division of Neonatology, Erasmus MC Sophia Children's Hospital, Rotterdam, the Netherlands, ³Department of Epidemiology, Erasmus MC, Rotterdam, the Netherlands, ⁴Department of Biostatistics, Erasmus MC, Rotterdam, the Netherlands, ⁵Department of Pediatric Surgery, Erasmus MC Sophia Children's Hospital, University Medical Center Rotterdam, Rotterdam, the Netherlands and ⁶Department of Biomechanical Engineering, Faculty of Mechanical Engineering, Delft University of Technology, Delft, the Netherlands

*Corresponding author. E-mail: j.degraaff@erasmusmc.nl

Abstract

Background: Arterial pressure measurements are important to monitor vital function in neonates, and values are known to be dependent of gestational and postnatal age. Current reference ranges for mean arterial pressure in neonates have been derived from small samples and combined data of noninvasive and invasive measurements. We aimed to define reference values for noninvasive mean, systolic, and diastolic blood pressure during the first week of life in otherwise healthy preterm and term neonates defined by gestational and postnatal age.

Methods: In this retrospective cohort study in a neonatal intensive care unit (NICU) in a Dutch tertiary paediatric hospital, we included the noninvasive blood pressures of neonates admitted between 2016 and 2018, with exclusion of those with severe comorbidities (major cardiac malformations, intracerebral haemorrhage, and tracheal intubation >6 h). We defined the median (P50) with -2 standard deviations (SD) (P0.23), -1 SD (P16), $+1$ SD (P84), and $+2$ SD (P97.7) for gestational age and postnatal age using quantile regression, percentiles provided online (<http://bloodpressure-neonate.com/>).

Results: A total of 607 neonates, with 5885 measurements, fulfilled the inclusion criteria. The P50 values of mean noninvasive arterial blood pressure in extreme preterm infants steeply increased during the first day after birth and gradually increased within a week from 27 to 49 mm Hg at 24 h of gestational age, and from 49 to 61 mm Hg at 41 weeks of gestational age.

Conclusions: These reference values for noninvasive blood pressure in neonates in the NICU for various gestational age groups provide guidance for clinical decision-making in healthy and diseased neonates during anaesthesia and sedation.

Keywords: arterial pressure; haemodynamics; neonatal intensive care; paediatric anaesthesia; premature birth; reference values

Received: 1 September 2022; Accepted: 25 January 2023

© 2023 The Authors. Published by Elsevier Ltd on behalf of British Journal of Anaesthesia. This is an open access article under the CC BY license (<http://creativecommons.org/licenses/by/4.0/>).

For Permissions, please email: permissions@elsevier.com

Editor's key points

- Arterial pressure measurement is an important physiological monitor of vital function in neonates, but current reference ranges are poorly defined.
- Reference values for noninvasive mean, systolic, and diastolic arterial pressure were analysed during the first week of life in otherwise healthy preterm and term neonates.
- Based on arterial pressure measurements from 607 neonates, mean noninvasive arterial pressure steeply increased during the first day after birth, and gradually increased within a week and more slowly after that based on gestational age.
- Reference values for changes in noninvasive blood pressure in neonates by gestational age provide guidance for clinical decision-making in healthy and diseased neonates.

Arterial blood pressure is an essential parameter in monitoring preterm and term newborns' cardiovascular function. Both hypotension and hypertension are associated with worse clinical outcome because of the risk for intracerebral ischaemia, haemorrhage, or both.^{1,2} There are large variations in the definition of hypotension and hypertension in neonates in the neonatal intensive care unit (NICU).^{3,4} Systematic reviews conclude that there is a paucity of reliable reference ranges owing to the limited validity because of current reference ranges based on small sample sizes, combined use of oscillometric noninvasive blood pressure (NIBP) and invasive arterial pressure measurements, and lack of consideration of factors such as gestational age, weight, medications, and maternal factors.^{3,5,6} The commonly used guide for minimum mean arterial pressure (MAP) in sedated neonates in the NICU and during anaesthesia is equal to the postmenstrual age in weeks based on consensus.^{4,7} Our group has defined reference values for arterial pressure for children between 0 and 18 years of age under anaesthesia in relation to weight, length, and age.⁸ However, these reference values are not applicable to neonates because they were developed for patients at an older age and higher weight and did not consider potential influential factors such as gestational age at birth. We therefore conducted a study aimed to define evidence-based reference values for noninvasive mean, systolic and diastolic arterial pressures during the first week of life for neonates at various gestational ages in the NICU. We also make these results available through an open access online interactive calculator.

Methods

In this retrospective cohort study, we analysed arterial pressure measurements made in the first week of life in otherwise healthy preterm and term neonates. All neonates admitted to the NICU of a specialised paediatric tertiary referral university hospital (Erasmus MC-Sophia Children's Hospital, Rotterdam, The Netherlands) between July 1, 2016 and July 1, 2018 were screened for eligibility. The study was approved by the institutional medical ethics committee (MEC-2017-1114). Based on the observational nature of the study, a waiver for parental informed consent was given.

Patient characteristics were obtained from the electronic health records system (HiX, Chipsoft, Amsterdam, The

Netherlands) and included gestational age, date and time of birth, sex, and weight. Gestational age had been established according to international consensus from ultrasound study or duration of amenorrhoea.⁹ Inotropic usage, sedation, and tracheal intubation details were obtained from the NICU patient data management system (PICIS Clinical Solutions S.A., Barcelona, Spain).

Maternal factors relevant to the neonatal initial arterial pressures included occurrence of diabetes (mellitus and gravidarum), hypertension, pre-eclampsia (and HELLP syndrome), and antibiotic administration shortly before or during labour. Birth-related factors included mode of delivery (vaginal or Caesarean delivery), usage of vacuum extraction or forceps, APGAR scores at 1, 5, and 10 min postpartum, and umbilical arterial cord blood pH and base excess. From November 2017, protocol driven delayed cord clamping was gradually implemented at our institution.¹⁰ This protocol comprised a 3 min delay in cord clamping in patients with gestational age ≥ 35 weeks and 1 min in patients with gestational age < 35 weeks.

The local protocol prescribes an arterial line in all patients < 26 weeks of gestational age, for routine continuous invasive arterial blood pressure (IABP) measurement and blood sampling. Patients with gestational age ≥ 26 weeks only received arterial access based on individual indication at the discretion of the attending physician.

Inclusion criteria were all patients for whom vital sign data were available, who were not continuously administered sedatives, and were haemodynamically stable during the first week of life. As invasive arterial monitoring was routine in all patients with gestational age < 26 weeks, invasive monitoring simultaneously with noninvasive monitoring was not an exclusion criterion in that group.

Exclusion criteria were neonates who met any of the following criteria: (septic) shock in the first 8 days of life requiring inotropes, major congenital cardiac malformations (defined as those with haemodynamic consequences on echocardiography), presence or high suspicion of genetic or other severe congenital disorders, severe intracerebral bleeding (intraventricular haemorrhage) with Papile-Burstein class II or higher,¹¹ necrotising enterocolitis Bell stage 2 or higher, heart rhythm disorders, asphyxia, maternal drug abuse, persistent pulmonary hypertension in the neonate, or surgery or death in the first week of life. Neonates with gestational age ≥ 26 weeks who had invasive arterial pressure measurements in the first 9 days of life were excluded, as haemodynamic instability is the most common indication for such monitoring in this group. The timeframes that the patients were intubated for surfactant administration according to the INSURE method were excluded.¹² Tracheal intubation with mechanical ventilation episodes was logged in the patient data management system, and these timeframes were excluded.

According to clinical local protocol, noninvasive arterial pressure measurements were made at least once every 2 h in the first 24 h after birth and once every 24 h after the first 24 h. Noninvasive arterial pressure was measured with an oscillometric method using Dräger Infinity® M540 monitors, and values were obtained from the patient monitoring system log files (Dräger Infinity Acute Care System Medical Cockpit, Drägerwerk, Lübeck, Germany). LabVIEW (National Instruments Corporation, Austin, TX, USA) software was used to process and sort patient monitor log files. Data were first extracted from the archives and filtered to contain only data from the first week of life.

In order to reduce the influence of outliers, we applied a median filter to reduce potential errors.¹³ In clinical practice, unrealistic low or high values are usually followed by repeating the measurements. The nurse doing the measurement simply does not 'trust' the values and checks it again. To refrain from arbitrary and subjective definitions of outliers, we applied a median filter that is a well-known order statistical method with good performance to reduce noise.¹⁴ If an individual patient provided more than one data point in 1 h, the median value was calculated and used in the analysis instead of a single value. Analysis was performed in the statistical package R (R Foundation for Statistical Computing, Vienna, Austria).

The reference curves for systolic, diastolic, and mean arterial pressures were based on quantile regression to estimate each quantile as a function of gestational age at birth, postnatal age, and so-called asymmetry, which determines the percentile being estimated. Mathematically quantile regression deals with optimisation in which the parameters of the quantile function are selected to minimise the weighted absolute distance between observations and quantiles by iteratively using a weighted quadratic approximation.^{15,16} Quantiles were modelled as a product of B-spline bases of gestational age at birth, postnatal age, and the asymmetry, which is a statistical technique that allows incorporation of non-linearity and interactions between covariates. Smoothness¹⁷ and monotonicity¹⁸ constraints were enforced by placing penalties on the coefficients of the model. The optimal value of the penalties that regulate smoothness was estimated by cross-validation. Not all children received the same number of blood pressure measurements for the same time period. To limit bias by selective missingness, we used a form of inverse probability weighing in which we included the observation probabilities of gestational age at birth, postnatal age, birth weight, the trend and slope of individual blood pressure

profiles, and previous blood pressure as covariates.¹⁹ We present and plot the standard deviation scores (SD) based on European practice which corresponds with the percentile curves (P) for -2 SD (P02.3), -1 SD (P16), median (P50), $+1$ SD (P84), and $+2$ SD (P97.7) for systolic, mean, and diastolic noninvasive arterial pressure curves for the first 7 days for each full week of gestational age at birth. Patient characteristics are presented as median with inter-quartile range (IQR) or as number with percentage (%).

Results

Of 1215 neonates admitted over 2 years, 141 were excluded because of insufficient data, and 467 neonates met the exclusion criteria (Fig 1), leaving 607 neonates, with gestational age ranging from 24 to 41 weeks, in the analysis. After exclusion of 175 h (2.5%) of INSURE time among 159 neonates, this resulted in 5885 NIBP measurements (Fig 2). Our sample consisted of 56% males and 22% multiple births, with a median gestational age of 33 weeks (IQR: 30–37, Fig 2). Birth weight ranged from 578 to 6310 g, median 1955 g (IQR: 1430–2890 g, Table 1); APGAR score at 10 min postpartum was 8 or higher in 89% of neonates. Median duration of admission to NICU was 4.4 days (IQR 2.5–7.5 days). The total admission duration of the study cohort by gestational age is presented in Supplementary Table S1.

The interplay between gestational age, postnatal age, and blood pressure is illustrated in a 3-dimensional mesh type plot (Fig 3). The median MAP increased from 23 mm Hg directly after birth to 35 mm Hg after 1 week of age at 24 weeks' gestational age, and from 46 mm Hg to 68 mm Hg at 41 weeks' gestational age (Fig 4). The range from P02.3 to P97.7 of MAP varied from 16 to 34 mm Hg at gestational age 24 weeks directly after birth, and from 56 mm Hg to 74 mm Hg at gestational age 41 weeks at Day 7.

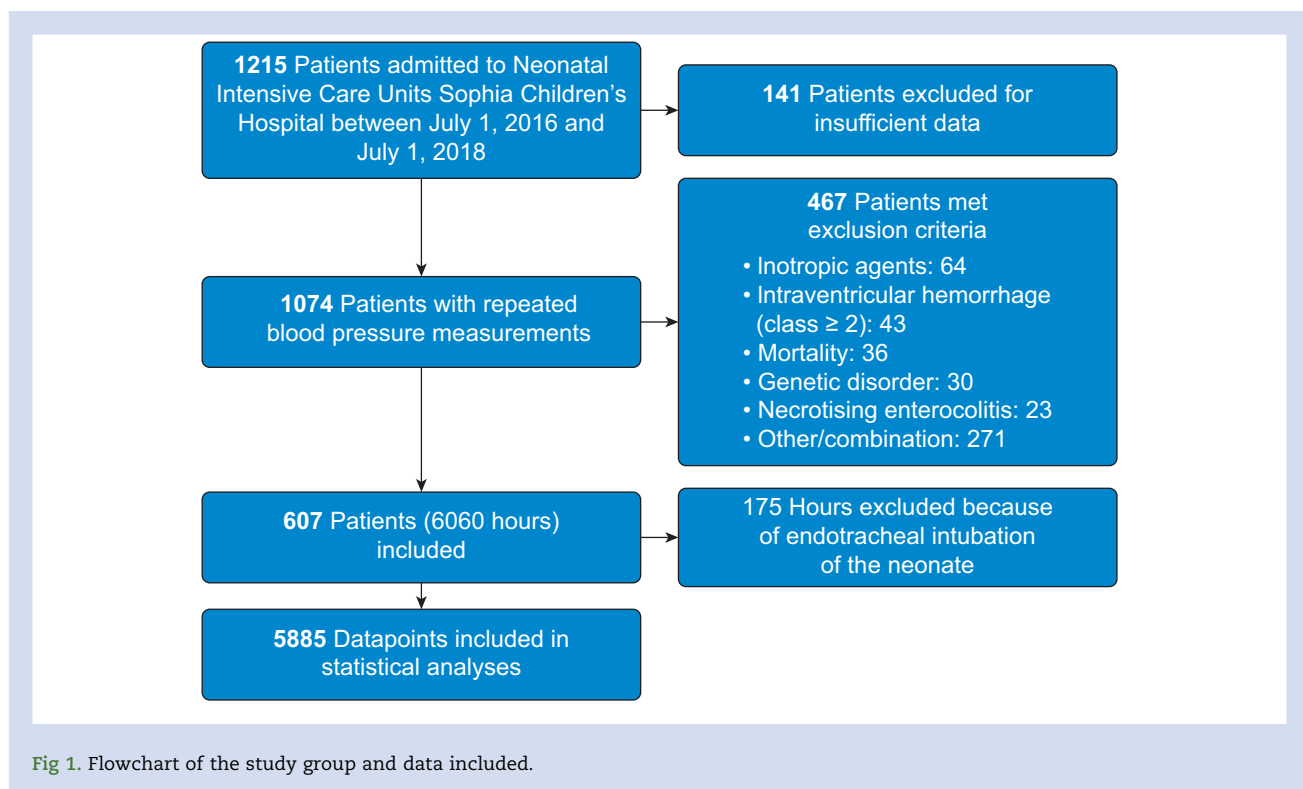


Fig 1. Flowchart of the study group and data included.

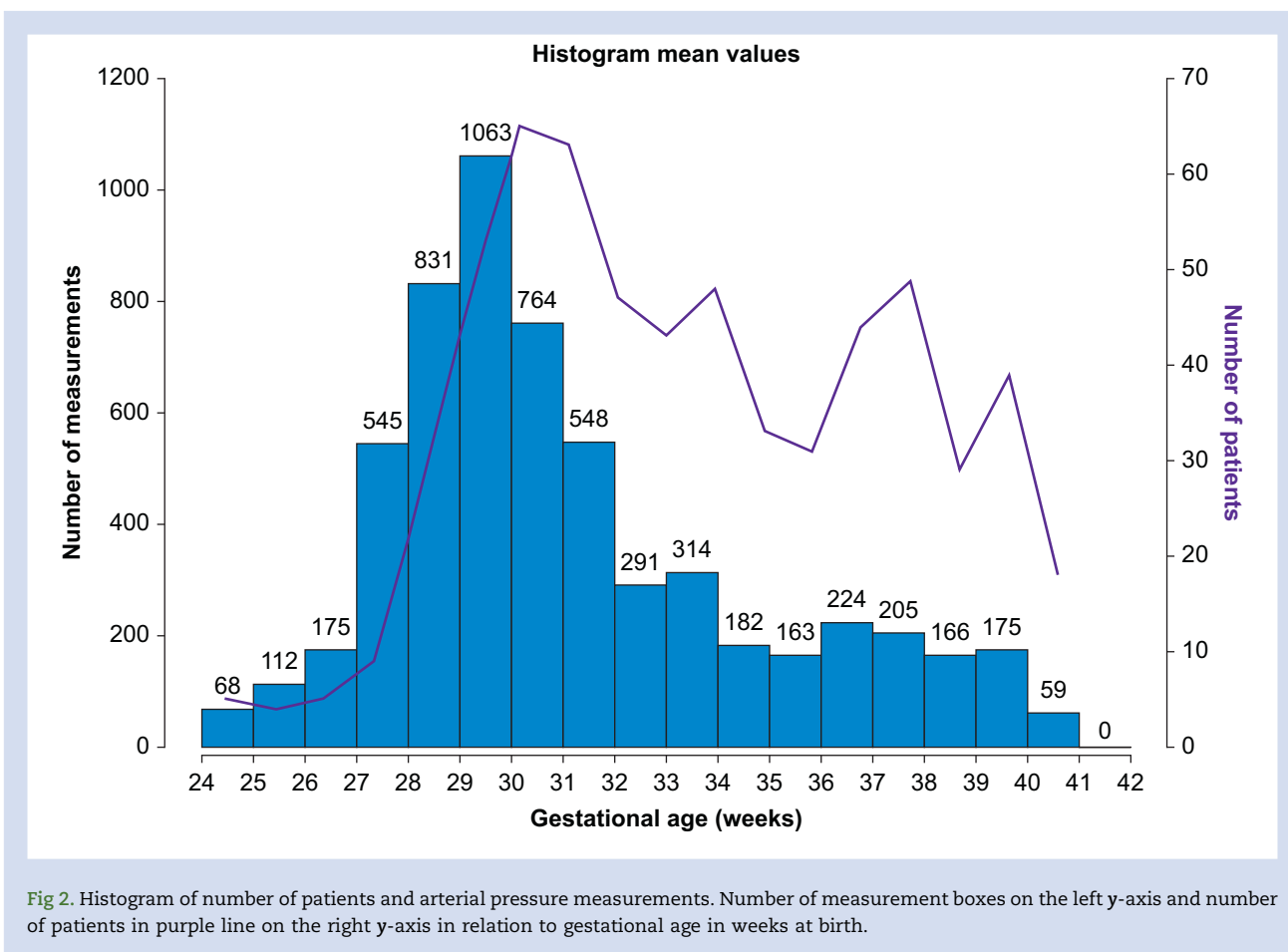


Fig 2. Histogram of number of patients and arterial pressure measurements. Number of measurement boxes on the left y-axis and number of patients in purple line on the right y-axis in relation to gestational age in weeks at birth.

Mean and diastolic arterial pressure rapidly increased within the first day in the lowest gestational age (24–32 weeks) group; the curves flatten thereafter. This observation was most pronounced in the patients with the lowest gestational age. The rapid increase in diastolic arterial pressure within the first hours after birth occurred in all gestational age groups. The systolic arterial pressure showed a more gradual increase within the first 48 h after birth in gestational age groups 24 until 33 weeks with a near linear increase in the older gestational age groups (Fig 4). The reference values for individual neonates according to our model can be found on a website incorporating gestational and chronologic age at <http://bloodpressure-neonate.com/>.

Discussion

The present model describes in detail the course of noninvasive arterial blood pressure during the first week of life in preterm and term infants born between 24 and 41 weeks of gestational age in the NICU. A website provides easily accessible data on the reference ranges, with percentile values for each gestational age for the first week of life. The sample represents blood pressure values of low acuity NICU patients and might therefore not be generalisable to infants with severe morbidity. Current standards for awake neonates of various ages will be helpful in determining what blood pressures are acceptable under anaesthesia and for diseased neonates in neonatal and paediatric intensive care. However, the reference values obtained in relatively healthy premature

neonates cannot be directly converted to neonates under sedation or general anaesthesia.

Previous research has presented several reference tables or curves for blood pressure in neonates.^{6,20–23} These papers have limited practical value to the preterm neonate population, because they were either based on small samples with few measurements, describe MAP of term infants only, include values of neonates who received vasoactive drugs, or were based on a mixture of invasive and noninvasive values, or were not translated to graphs. Therefore, in clinical practice many anaesthesiologists use, as a rule of thumb for minimum MAP, the postmenstrual age in weeks.^{4,7} The present model shows that the lowest range for MAP at 24 h after birth matches pretty well with the gestational age in most gestational age groups. The -2 SD (P02.3) 24 h after birth at gestational age 24 weeks is 23 mm Hg, at gestational age 30 weeks 32 mm Hg, and at gestational age 36 weeks 37 mm Hg. However, our data show that the simple linear rule of thumb fails to predict blood pressure in many situations. It does not take into account the low values shortly after birth, the rapid increase in the first day, and the gradual increase thereafter in the more mature age groups. For example, at Day 4–7 of life, the rule of thumb underestimates the lower limit of MAP by 5 and 10 mm Hg in neonates born at 32 and 40 weeks of gestation, respectively. This suggests that blood pressure support should be more restrained in the first day of life and more aggressive in the course of the first week.

Our observational data define the range of actual arterial blood pressures in our population, but developing a new rule

Table 1 Baseline characteristics of the study group. Data are presented as median with inter-quartile rang [IQR], or as number (%). *27× amoxicillin/clavulanic acid, 9× penicillin, 9× amoxicillin.

	Noninvasive blood pressure (n=607)		N
Sex (male), n (%)	340	(56)	607
Twins, n (%)	135	(22)	607
Gestational age, weeks	33.6	[30.7–37.3]	605
Birth weight, g	1955	[1430-2890]	605
Delivery, n (%)			602
Caesarean delivery	314	(52)	
Vaginal	259	(43)	
Vacuum extraction/forceps	29	(5)	
Meconium-stained amniotic fluid	45	(14)	326
Umbilical arterial cord blood gas analysis			
Base excess	-3.1	[-6.0 to 1.9]	340
pH	7.28	[7.22–7.33]	362
Median APGAR			
5 min postpartum	9	[8–9]	569
10 min postpartum	9	[8–10]	400
APGAR ≥8, n (%)			
5 Min postpartum	427	(75)	569
10 Min postpartum	356	(89)	400
Maternal, n (%)			
PE/HELLP	104	(17)	607
Diabetes mellitus/diabetes gravidarum	62	(10)	607
Hypertension	11	(2)	607
Prepartum antibiotics*	45	(7)	606
Comorbidities, n (%)			
Intraventricular haemorrhage (class 1)	12	(2)	607
Infant respiratory distress syndrome	171	(28)	607
Cardiac (non-excluding)	18	(3)	607
NICU admission duration, days, n (%)			607
<1 Week	167	(27.5)	
≥1 Week	440	(72.5)	

APGAR, Appearance, Pulse, Grimace, Activity and Respiration score; HELLP: haemolysis, elevated liver enzymes, and a low platelet count syndrome; NICU, neonatal intensive care unit; PE: pre-eclampsia.

of thumb that is useful in clinical practice requires clinical intervention studies with data on organ perfusion and long-term outcomes, which cannot be inferred from descriptive data alone. Easily accessible reference ranges for both hypotension and hypertension are crucial for optimal treatment.²⁴ Our interactive website shows ranges for expected blood

pressures, and the open source allows incorporation of the reference tables into electronic medical records.

The present model shows a rapid increase in mean and diastolic arterial pressure within the first day of life in the lowest gestational age groups, and a more gradual increase in systolic arterial pressure. Previous studies on the postnatal development of blood pressure in extremely premature infants have shown conflicting results.^{20–22} Some studies report an initial decrease in blood pressure in extremely premature infants within the first 3 h after birth with an increase in the first 24 h thereafter,^{20,22,25} and others report a rapid increase within the first few hours.^{21,26} These differences might be ascribed to inclusion of patients receiving inotropes and vasopressors with dissimilar treatment protocols, and by differences in standardisation of measurements and data modelling. Our data are in line with previous studies showing a rapid increase in blood pressure in extremely premature neonates directly after birth, which suggests more rapid adaptation to extrauterine life, and a more gradual increase in those at greater gestational age.^{21,26}

The reference values determined for NIBP are based on the most frequently used method for blood pressure measurement in the intensive care setting, a cuff and oscillometric determination. For MAP <30 mm Hg, IABP measurements are more accurate.⁵ However, IABP measurement requires intra-arterial cannulation, which is avoided in neonates who are not critically ill and can be associated with severe complications.²⁷ Other studies have shown that in neonates, NIBP measurement shows fair agreement with IABP, irrespective of gestational age or birth weight.²⁸ We preferred to describe noninvasive blood pressure in otherwise healthy neonates. Because in our hospital only diseased neonates are monitored invasively, we could not perform a similar analysis for IABP in healthy neonates, and chose to present only NIBP nomograms.

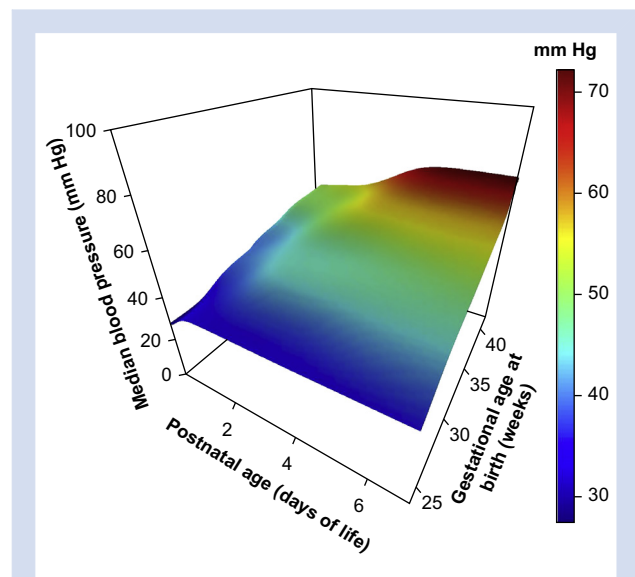


Fig 3. 3-Dimensional mesh plot of the interplay between gestational age in weeks, postnatal age in days, and median mean arterial pressure in mm Hg. The variance in colour corresponds with mean arterial pressure in mm Hg as depicted on the right side of the graph.

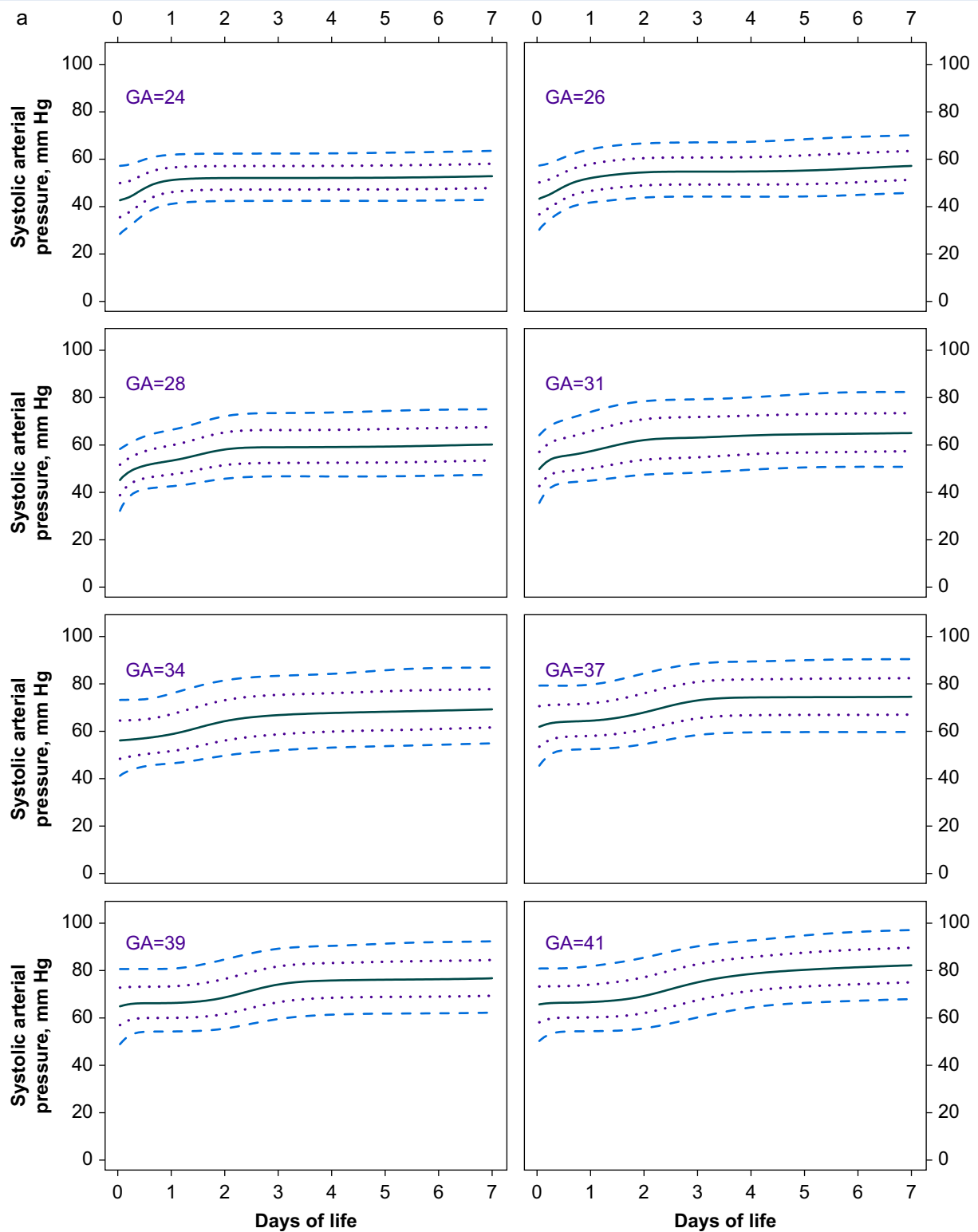


Fig 4. Plots of noninvasive blood pressure curves vs gestational age. Course of systolic arterial pressure (a), mean arterial pressure (b), and diastolic arterial pressure (c) by gestational age. Percentiles of noninvasive blood pressure (mm Hg, y-axis) for the first 7 days after birth (x-axis, in days) for each full week of gestation at birth (from 24 to 41 weeks), representing the -2 SD (P2.3): lower dashed purple line; -1 SD (P16): lower dotted blue line; median or 0 SD (P50): solid black line; $+1$ SD (P84): upper dotted purple line; and $+2$ SD (P97.7): upper dashed blue line. For percentile values for gestational age and postnatal age in weeks plus days, visit <http://bloodpressure-neonate.com/>. GA, gestational age (weeks); P, percentile; SD, standard deviation.

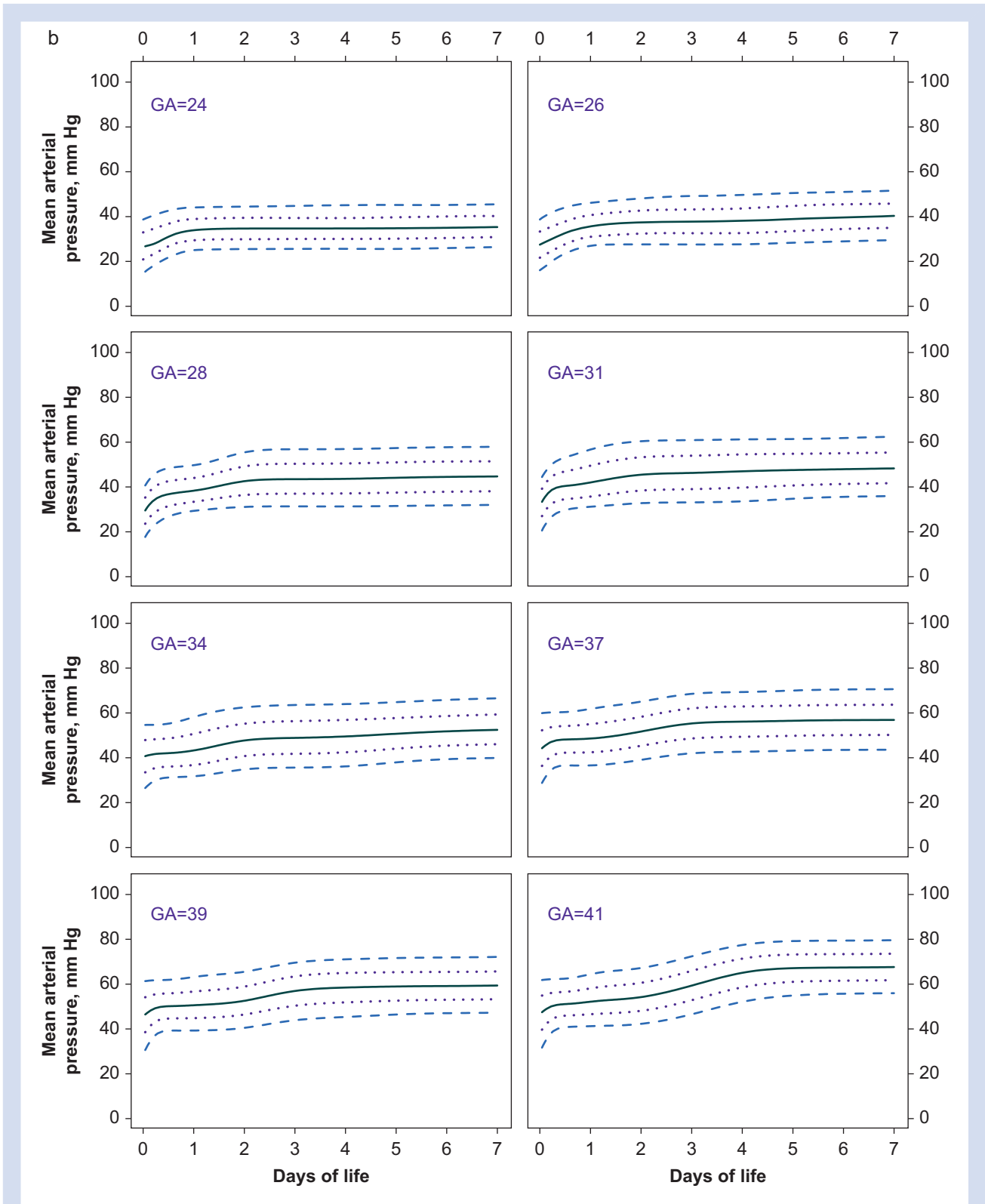


Fig 4. continued

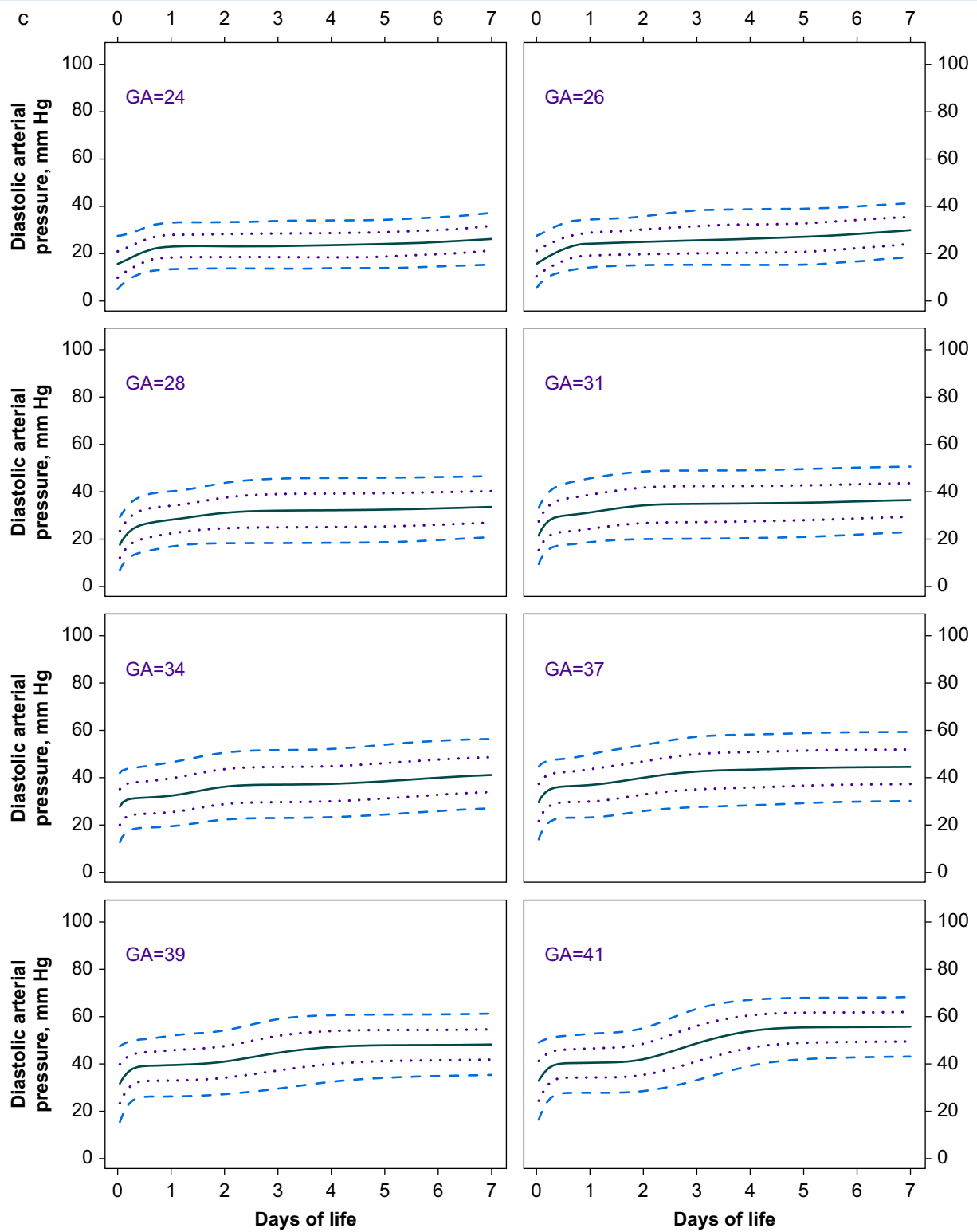


Fig 4. continued

Neonatal arterial blood pressure depends in part on gestational age and other factors such as sex, birth weight, ethnic background, delayed cord clamping, and maternal factors (such as maternal hypertension, pre-eclampsia and drug use). The latter were not included in our models since retrospective data were incomplete and the sample size was inadequate.^{5,21,29,30} The issue of cord clamping is interesting in that as long as the baby is breathing, a 1-min delay will transfuse ~80 ml and a 3-min delay ~100 ml into the baby's circulation, which in turn increases cardiac filling and subsequently arterial pressure.³¹

Other limitations include the sensitivity of oscillometric NIBP measurements to artifacts (movement and crying) and the influence of incorrect cuff size and measurement location. The location of the measurement (upper or lower extremity) and cuff size was performed according to standard practice, but was not registered and could therefore not be incorporated in the analyses. We suggest that future studies could benefit from a prospective multicentre design, inclusion of a larger sample of healthy neonates with registration of potentially relevant maternal and neonatal factors, and a highly standardised NIBP measurement protocol carried out by trained staff. Expanding the observation period beyond the first week of life in such studies would be valuable.

In conclusion, reference values for noninvasive blood pressure for various age groups presented here will be useful in guiding clinical decision-making for preterm and term born neonates in the first week of life in intensive care units and by inference during anaesthesia.

Authors' contributions

Conceptualised the study: ACvZ, WvW, TGG, IKMR, MJV, JcDg
 Designed the study: ACvZ, MJV, JcDg
 Designed the database: ACvZ
 Collected data: ACvZ, JAP, WvW
 Carried out the analyses: ACvZ, JAP
 Drafted the manuscript: ACvZ
 Reviewed the manuscript: JAP, SW, KM, WvW, TGG, JcDg
 Revised the manuscript: JAP, SW, KM, TGG, IKMR, MJV, JcDg
 Designed and performed the statistical analyses: SW, KM
 Designed the data collection instruments: WvW, TGG
 Responsible for the clinical data collection and critically reviewed the manuscript: IKMR
 Critically reviewed the analyses: MJV
 Coordinated and supervised data collection: JcDg
 Approved the final manuscript as submitted and agree to be accountable for all aspects of the work: all authors

Acknowledgements

We would like to thank Ko Hagoort of the Erasmus MC-Sophia Children's Hospital, Rotterdam for editorial assistance.

Declaration of interest

The authors declare they have no financial relationships relevant to this article to disclose.

Funding

Institutional or departmental sources. Data acquisition technology was co-financed by Stichting Coolsingel (Rotterdam, Netherlands).

Appendix A. Supplementary data

Supplementary data to this article can be found online at <https://doi.org/10.1016/j.bja.2023.01.024>.

References

1. Dionne JM, Abitbol CL, Flynn JT. Hypertension in infancy: diagnosis, management and outcome. *Pediatr Nephrol* 2012; **27**: 17–32
2. McCann ME, Soriano SG. Perioperative central nervous system injury in neonates. *Br J Anaesth* 2012; **109**(Suppl 1): i60–i7
3. Lalan SP, Warady BA. Discrepancies in the normative neonatal blood pressure reference ranges. *Blood Press Monit* 2015; **20**: 171–7
4. Development of audit measures and guidelines for good practice in the management of neonatal respiratory distress syndrome. Report of a joint working group of the British association of perinatal medicine and the research unit of the royal college of physicians. *Arch Dis Child* 1992; **67**: 1221–7
5. Dionne JM, Bremner SA, Baygani SK, et al. Method of blood pressure measurement in neonates and infants: a systematic review and analysis. *J Pediatr* 2020; **221**: 23–31.e5
6. Paliwoda M, New K, Davies M, Bogossian F. Physiological vital sign ranges in newborns from 34 weeks gestation: a systematic review. *Int J Nurs Stud* 2018; **77**: 81–90
7. Stranak Z, Semberova J, Barrington K, et al. International survey on diagnosis and management of hypotension in extremely preterm babies. *Eur J Pediatr* 2014; **173**: 793–8
8. de Graaff JC, Pasma W, van Buuren S, et al. Reference values for noninvasive blood pressure in children during anesthesia: a multicentered retrospective observational cohort study. *Anesthesiology* 2016; **125**: 904–13
9. Villar J, Papageorghiou AT, Pang R, et al. The likeness of fetal growth and newborn size across non-isolated populations in the INTERGROWTH-21st project: the fetal growth longitudinal study and newborn cross-sectional study. *Lancet Diabetes Endocrinol* 2014; **2**: 781–92
10. WHO Guidelines Approved by the Guidelines Review Committee. *Guideline: delayed umbilical cord Clamping for improved Maternal and infant Health and nutrition outcomes*. Geneva: World Health Organization; 2014
11. Burstein J, Papile LA, Burstein R. Intraventricular hemorrhage and hydrocephalus in premature newborns: a prospective study with CT. *AJR Am J Roentgenol* 1979; **132**: 631–5
12. de Kort EH, Reiss IK, Simons SH. Sedation of newborn infants for the INSURE procedure, are we sure? *Biomed Res Int* 2013; **2013**, 892974
13. Kool NP, van Waes JA, Bijker JB, et al. Artifacts in research data obtained from an anesthesia information and management system. *Can J Anaesth* 2012; **59**: 833–41
14. Stone DC. Application of median filtering to noisy data. *Can J Chem* 1995; **73**: 1573–81
15. Koenker R, Ng P. Inequality constrained quantile regression. *Sankhyā Ind J Stat* 2005; **67**: 418–40
16. Schlossmacher EJ. An iterative technique for absolute deviations curve fitting. *J Am Stat Assoc* 1973; **68**: 857–9
17. Eilers PH, Marx BD, Durbán M. Twenty years of P-splines. *SORT Stat Oper Res T* 2015; **39**: 149–86

18. Bollaerts K, Eilers PH, Aerts M. Quantile regression with monotonicity restrictions using P-splines and the L1-norm. *Stat Model* 2006; **6**: 189–207
19. Commenges D, Jacqmin-Gadda H. Models for longitudinal data. In: *Dynamical biostatistical models*. New York: Chapman and Hall/CRC; 2015. p. 63–103
20. Alonzo CJ, Nagraj VP, Zschaebitz JV, Lake DE, Moorman JR, Spaeder MC. Blood pressure ranges via non-invasive and invasive monitoring techniques in premature neonates using high resolution physiologic data. *J Neonatal Perinatal Med* 2020; **13**: 351–8
21. Dizon S, Hoffman SB. Postnatal blood pressure in the preterm small for gestational age neonate. *J Neonatal Perinatal Med* 2018; **11**: 371–7
22. Vesoulis ZA, El Ters NM, Wallendorf M, Mathur AM. Empirical estimation of the normative blood pressure in infants <28 weeks gestation using a massive data approach. *J Perinatol* 2016; **36**: 291–5
23. Kent AL, Kecskes Z, Shadbolt B, Falk MC. Normative blood pressure data in the early neonatal period. *Pediatr Nephrol* 2007; **22**: 1335–41
24. Harer MW, Kent AL. Neonatal hypertension: an educational review. *Pediatr Nephrol* 2019; **34**: 1009–18
25. Batton B, Li L, Newman NS, et al. Evolving blood pressure dynamics for extremely preterm infants. *J Perinatol* 2014; **34**: 301–5
26. Batton B, Batton D, Riggs T. Blood pressure during the first 7 days in premature infants born at postmenstrual age 23 to 25 weeks. *Am J Perinatol* 2007; **24**: 107–15
27. Davis AL, Carcillo JA, Aneja RK, et al. American College of Critical Care Medicine clinical practice parameters for hemodynamic support of pediatric and neonatal septic shock. *Crit Care Med* 2017; **45**: 1061–93
28. Meyer S, Sander J, Gräber S, Gottschling S, Gortner L. Agreement of invasive versus non-invasive blood pressure in preterm neonates is not dependent on birth weight or gestational age. *J Paediatr Child Health* 2010; **46**: 249–54
29. Kent AL, Chaudhari T. Determinants of neonatal blood pressure. *Curr Hypertens Rep* 2013; **15**: 426–32
30. Sadoh WE, Ibhanesebhor SE. Oscillometric blood pressure reference values of African full-term neonates in their first days postpartum. *Cardiovasc J Afr* 2009; **20**: 344–7
31. Bhatt S, Alison BJ, Wallace EM, et al. Delaying cord clamping until ventilation onset improves cardiovascular function at birth in preterm lambs. *J Physiol* 2013; **591**: 2113–26

Handling editor: Hugh C Hemmings Jr