

Microbial biomanufacturing for space-exploration-what to take and when to make

Averesch, Nils J.H.; Berliner, Aaron J.; Nangle, Shannon N.; Zezulka, Spencer; Vengerova, Gretchen L.; Ho, Davian; Casale, Cameran A.; Lehner, Benjamin A.E.; Snyder, Jessica E.; More Authors

DOI

[10.1038/s41467-023-37910-1](https://doi.org/10.1038/s41467-023-37910-1)

Publication date

2023

Document Version

Final published version

Published in

Nature Communications

Citation (APA)

Averesch, N. J. H., Berliner, A. J., Nangle, S. N., Zezulka, S., Vengerova, G. L., Ho, D., Casale, C. A., Lehner, B. A. E., Snyder, J. E., & More Authors (2023). Microbial biomanufacturing for space-exploration-what to take and when to make. *Nature Communications*, 14(1), 2311. Article 2311. <https://doi.org/10.1038/s41467-023-37910-1>

Important note

To cite this publication, please use the final published version (if applicable). Please check the document version above.

Copyright

Other than for strictly personal use, it is not permitted to download, forward or distribute the text or part of it, without the consent of the author(s) and/or copyright holder(s), unless the work is under an open content license such as Creative Commons.

Takedown policy

Please contact us and provide details if you believe this document breaches copyrights. We will remove access to the work immediately and investigate your claim.


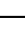
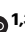
Microbial biomanufacturing for space-exploration—what to take and when to make

Received: 18 July 2022

Accepted: 5 April 2023

Published online: 21 April 2023

 Check for updates

Nils J. H. Aversch ^{1,2,12} ✉, Aaron J. Berliner ^{1,3,12} ✉, Shannon N. Nangle^{4,5,12} ✉, Spencer Zezulka ^{1,3,6}, Gretchen L. Vengerova ^{1,3}, Davian Ho^{1,3}, Cameran A. Casale^{1,3}, Benjamin A. E. Lehner⁷, Jessica E. Snyder⁸, Kevin B. Clark^{9,10}, Lewis R. Dartnell¹¹, Craig S. Criddle^{1,2} & Adam P. Arkin ^{1,3}

As renewed interest in human space-exploration intensifies, a coherent and modernized strategy for mission design and planning has become increasingly crucial. Biotechnology has emerged as a promising approach to increase resilience, flexibility, and efficiency of missions, by virtue of its ability to effectively utilize in situ resources and reclaim resources from waste streams. Here we outline four primary mission-classes on Moon and Mars that drive a staged and accretive biomanufacturing strategy. Each class requires a unique approach to integrate biomanufacturing into the existing mission-architecture and so faces unique challenges in technology development. These challenges stem directly from the resources available in a given mission-class—the degree to which feedstocks are derived from cargo and in situ resources—and the degree to which loop-closure is necessary. As mission duration and distance from Earth increase, the benefits of specialized, sustainable biomanufacturing processes also increase. Consequentially, we define specific design-scenarios and quantify the usefulness of in-space biomanufacturing, to guide techno-economics of space-missions. Especially materials emerged as a potentially pivotal target for biomanufacturing with large impact on up-mass cost. Subsequently, we outline the processes needed for development, testing, and deployment of requisite technologies. As space-related technology development often does, these advancements are likely to have profound implications for the creation of a resilient circular bioeconomy on Earth.

With reinvigorated curiosity and enthusiasm for space-exploration and increasingly complex campaigns, humanity prepares to return to the Moon en route to Mars^{1–3}. Efforts to modernize mission architectures^{4,5}—combinations of inter-linked system elements that

synergize to realize mission goals⁶—will need to leverage an array of enabling technologies including biomanufacturing towards the realization of such grand visions^{7–9}. Microbial biomanufacturing has the potential to provide integrated solutions for remote or austere

¹Center for the Utilization of Biological Engineering in Space (CUBES), Berkeley, CA, USA. ²Department of Civil and Environmental Engineering, Stanford University, Stanford, CA, USA. ³Department of Bioengineering, University of California Berkeley, Berkeley, CA, USA. ⁴Wyss Institute for Biologically Inspired Engineering at Harvard University, Boston, MA, USA. ⁵Circe Bioscience Inc., Somerville, MA, USA. ⁶School of Information, University of California Berkeley, Berkeley, CA, USA. ⁷Department of Bionanoscience, Delft University of Technology, Delft, South Holland, Netherlands. ⁸Blue Marble Space Institute of Science, Seattle, WA, USA. ⁹Cures Within Reach, Chicago, IL, USA. ¹⁰Champions Program, eXtreme Science and Engineering Discovery Environment (XSEDE), Urbana, IL, USA. ¹¹Department of Life Sciences, University of Westminster, London, UK. ¹²These authors contributed equally: Nils J.H. Aversch, Aaron J. Berliner, Shannon N. Nangle. ✉e-mail: nils.aversch@uq.net.au; aaron.berliner@berkeley.edu; shannon@circebioscience.com

locations, especially where supply chains for consumable and durable goods cannot operate reliably^{10,11}. Complementary to, but distinguished from merely remediative and extractive microbial functions, such as biomining^{12,13}, off-world biomanufacturing corresponds to any deployable system that leverages biology as the primary driver in generating mission-critical inventory items of increased complexity, i.e., the de novo synthesis of components for the formulation of food, pharmaceuticals, and materials^{8,10,14,15}. When integrated effectively into mission architectures, bio-based processes could significantly de-risk crewed operations through increased autonomy, sustainability, and resilience, freeing up payload capacity¹⁶.

Key to the efficacy of biotechnology as a support of human space-exploration is its efficiency in using locally available resources (in situ resource utilization, ISRU) and the ability to utilize waste streams from other mission elements and recycle its own products (loop-closure, LC)¹⁷⁻¹⁹. As missions expand, progressive advancement and wider implementation of in situ (bio)manufacturing (ISM/bio-ISM) will lead to greater independence, enabling more complex mission-designs with extended goals, and may eventually allow a self-sufficient human presence across the solar system to be sustained. Biomanufacturing is appropriate for that purpose, because high-volume resources, like fixed carbon and nitrogen (as well as low-volume, but critical resources such as minerals) can be produced and recovered in compact autonomous systems that are analogous to Earth's biogeochemical cycles²⁰⁻²⁴. Biochemistry also provides access to a plethora of organic compounds, often at

unrivaled purity and selectivity, many of which are not accessible by other means^{25,26}.

Biologically-driven ISM in support of space-exploration becomes more significant the deeper humans venture into space: As the support of supply chains becomes increasingly challenging the further humans travel, ISM is most feasible in locations where resources are available, accessible and abundant, such as the Moon²⁷, but even more so Mars (Fig. 1b). The advantages and drawbacks of biotic and abiotic approaches for ISM, in particular for life-support but also auxiliary functions for extended human operations beyond Earth-orbit have previously been discussed at length^{8,10,28,29} (also see Table 1 in the Supplementary Information), but an actionable roadmap for deploying biomanufacturing-based systems within upcoming campaigns has yet to be formulated. Here, we discuss the applicability of biologically driven ISRU and LC in the context of different off-world mission classes, and conduct a qualitative techno-economic analysis (TEA) to unravel the inventories of different mission-design scenarios of space-travel. Following the TEA, we lay out paths for readying bio-based technologies for deployment and inclusion into mission-architecture, to enable the next phase of roadmapping for crewed missions into deep-space.

Off-world biomanufacturing approaches

Concepts-of-operations: modes of in situ bio-manufacturing

Given that biomanufacturing is uniquely suited to play significant roles in the specific realms of food, therapeutics, and materials⁸, a key

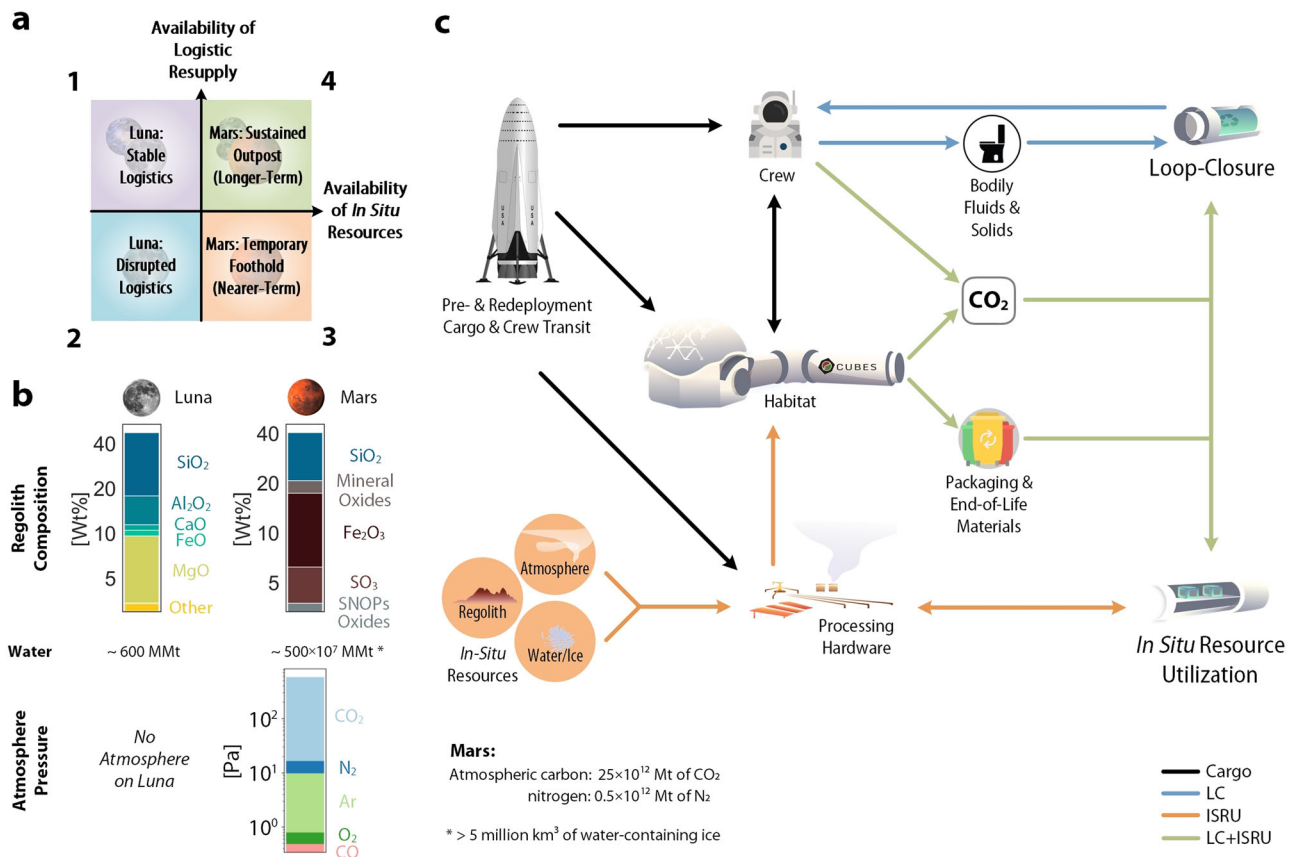


Fig. 1 | Approaches to in situ biomanufacturing (bio-ISM) depending on off-world mission-class. The context-specific off-world mission-classes 1 to 4 are defined in (a), mapped as quadrants on qualitative spectra for the availability of in situ resources and logistic resupply. The most ubiquitous surface-accessible in situ resources for the Moon¹⁰¹ and Mars¹⁰² are compared in (b) in form of gases and solids, broken down into their molecular compositions (SNOPs: sulfur, nitrogen, oxygen, phosphorus). Note that SNOPs and mineral oxides exclude otherwise

listed compounds. Compositions and amounts (where given) are rough estimates, based on current knowledge¹⁰³⁻¹⁰⁶. MMt: million metric tons). Biomanufacturing concepts-of-operations (CONOPS), outlined in (c), are color-coded for the operational mode: outgoing from initial cargo (black lines), CONOPS can rely on either loop-closure (LC, blue lines), in situ resource utilization (ISRU, orange lines), or both (LC+ISRU, green lines).

challenge in realizing its potential rests in the availability and abundance of mobilizable feedstocks¹⁰—provided through logistic resupply (directly or from re- and up-cycling of mission products) or obtained from in situ resources. This abundance depends on the destination, and leads to a qualitative discrimination of off-world mission-classes as shown in Fig. 1a. The in situ resources that are available on the Moon and Mars are broken down in Fig. 1b, which aids in comparing mission profiles and the extent to which these can be driven by biomanufacturing. For each mission-class, different concepts-of-operations (CONOPS) are applicable—these CONOPS conform to specific inventory needs as they relate to mission- and crew-requirements and depend on the resources availability for ISM. The environmental context informs the specification of feedstocks and processing pipelines (LC or ISRU) for ISM, as shown in Fig. 1c.

Each mission-class comprises a unique set of inventory items; these may include infrastructure components (e.g., habitat assemblies and furnishing, functional hardware/appliances as well as scientific equipment and tools), transported as either pre-deployment cargo or with the crew. These components are used to assemble the larger integrated habitation and life-support systems as well as (bio-)ISM-based LC or ISRU systems and infrastructure related to mission-objectives³⁰. While all such off-world mission-classes are distinct in terms of operations⁴, they serve as exemplars to better understand biomanufacturing strategies in relationship to mission-specific factors that might provide resources, crew count/needs, and logistical constraints.

Implementation of bio-ISM dependent on off-world mission-class

Class 1 (Moon, stable logistics) considers Artemis-like Lunar operations¹, specifically short stay missions for small numbers of astronauts with narrow scope of scientific and technical exploration. Because of the short times and logistic accessibility, crew-needs for food, medicine and materials can be provided through carry-along and resupply from Earth^{31,32}, rather than relying on more complex, risky and time-intensive technologies such as biomanufacturing. Also, due to the dearth of in situ resources on the Moon (Fig. 1b)^{27,33}, the scale of biomanufacturing will be constrained by the supply chain and capability for recycling and LC. However, because of the well-supported environment, it is an ideal location to prove and improve technologies for biomanufacturing in space by testing automated and scaling operation of critical bioreactor systems for different bioprocess types (e.g., electro- and photo-autotrophic (gas) bioreactors for lithoautotrophic and/or saprotrophic fermentation of macronutrients³⁴), all of which are likely to have physiological and operational challenges in a low-gravity, high-stress environment^{35–37}. To this end, systems that have achieved a Technology Readiness Level (TRL)^{38,39} of 5 are well suited to be implemented and evaluated. While these systems currently exist in isolation or partially integrated in laboratory and industrial contexts, building automated end-to-end, compact systems (advancement past TRL 7) will be a key requirement for class 1, so as to meaningfully scale to future, more constrained mission architectures.

Class 2 (Moon, disrupted logistics) considers advanced Lunar operation capabilities when extensive infrastructure has been deployed on the Moon. To increase the time for operations between resupply (and brace against unexpected disruption), storage facilities are increased and biomanufacturing becomes more attractive. Given the paucity of feedstock raw materials on the Moon (central resources necessary for bio-ISM such as carbon and nitrogen are hardly present, water is poorly accessible and distribution highly heterogeneous)^{27,33}, hyper-efficient use of stored supplies and efficient use of other available mission products and waste-streams via LC must be engineered. Derivatization of packaging materials, such as biodegradable plastics, and minimal processing systems for black and grey water could provide significant augmentations to expected feedstock and extend the

operational times of biomanufacturing systems in the event of scheduled or unplanned disruption of the supply chain⁴⁰. Under extreme conditions, being able to switch biomanufacturing operations from, for example, complex vegetable foods to faster and less resource-intensive production of simple cellular foods becomes paramount to defray risk. These challenges require innovations in new alternative feedstock engineering in organisms; co-design of mission materials for biological consumption; development of basic waste-processing systems; and flexible re-configurable infrastructures for production to respond to changing resource conditions. Applicable technologies comprise systems that have been tested in the relevant environments and brought to TRL over 7 within operations of class 1, and are ready for implementation into mission architecture.

Class 3 (Mars, rudimentary logistics) considers basic biomanufacturing systems deployed on Mars with poor logistic resupply due to increased interplanetary distance but with greater availability of in situ resources as compared to the Moon. While mission-design is still characterized by small crews on round-trips, resource constraints carry different weight. Given the extent and degree of the unknowns involved, these missions are ideally designed to maximize safety and stability by preparing for diverse contingencies. Providing those redundancies becomes exceedingly challenging due to the remoteness of Mars⁴. Hence, meaningful bio-ISM is necessary – with substantial scaling of the systems brought to TRL 8 to 9, supported by developments from classes 1 and 2. While a portion of the food, therapeutics and materials will still derive from cargo, significant ISRU of regolith, water, and atmosphere must be implemented in addition to LC, to ensure mission flexibility and resilience. For food, nutritional completeness and palatability, together with customization of texture, flavor, and format will be of central importance. To further safeguard crew-health, essential therapeutics that cannot be included in cargo due to restrictions such as shelf-life, are within scope^{8,10,15}. For maximum fidelity of mission operations, a range of thermoplastic multi-purpose materials have been proposed for manufacturing of e.g., food processing equipment, surgical and medical supplies, radiation shielding, and habitat components^{41–44}. Enabling technologies include: modular fermentations and bioprocesses at scale, optimized genetically engineered microbial strains to efficiently produce intermediates (i.e., ingredients, agents, crude polymer), and formulation/processing systems to assemble the final products (i.e., meals, drugs, manufactured items). Automation of operations becomes the backdrop of an increasingly diverse set of inventory items.

Class 4 (Mars, developed logistics) envisages a fully fledged and integrated biomanufacturing where essential logistic resupply is enabled by interplanetary networks and deep-space outposts^{45–47}, combined with extensive ISRU and LC. Specifically, this class would entail sustained human operations on Mars on the verge of permanent settlement. The extensive infrastructure that must be deployed for this kind of mission-design enables production of complete and diverse foods with a spectrum of forms and nutrition, a holistic range of therapeutics, and different bulk as well as specialty materials (plastics, metals, composites) that allow not only the maintenance but also expansion of infrastructure, semi- or fully autonomously. Biomanufacturing technologies and auxiliary infrastructure need to be fully developed and matured to readily deploy tailored microbial cell factories that can potentially be engineered on-demand as the need arises. To this end, even the accommodation of a “space biofoundry” (i.e., automated infrastructure for engineering and analytics of biological systems⁴⁸) in the mission architecture is within scope. Eventually, this will also entail the ISM of specialty chemicals and reagents like e.g., phosphoramidites for DNA synthesis, supporting on-site bioengineering⁴⁹, in addition to the total inventories of foods, therapeutics and materials.

As outlined, depending on the off-world mission-class, biomanufacturing can either be tested and developed (class 1) or used as a

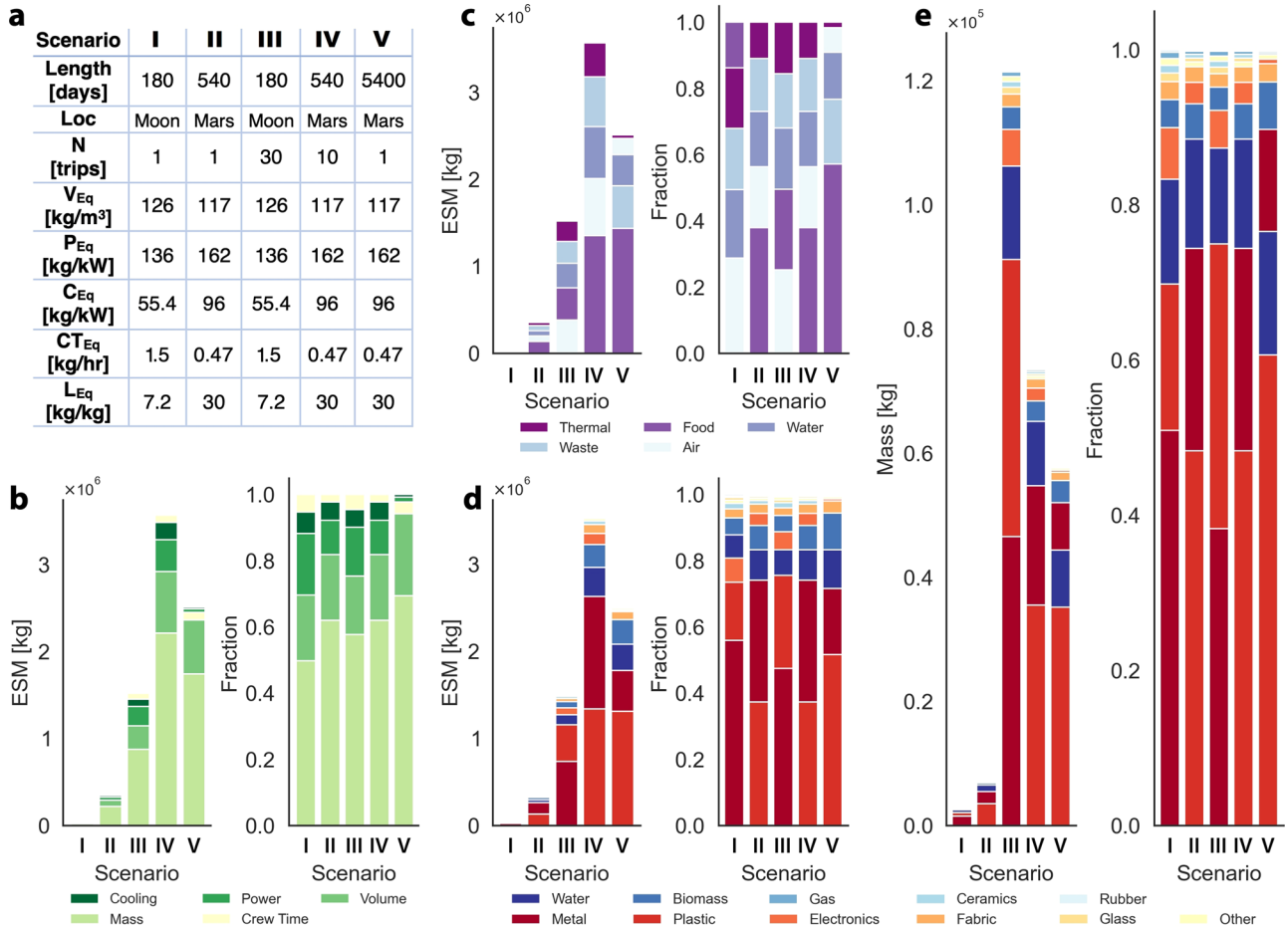


Fig. 2 | Breakdown of environmental control and life support systems into components by type of system and composition thereof. The make-up of the inventory and hence the operational expenses are dependent on the mission-design scenario. Panel (a) provides an overview of parameters for five exemplar space-travel scenarios: 'I' and 'II' correspond to single sorties (*N*) to the Moon and Mars, respectively, using standard surface operation duration⁴⁰, while 'III' and 'IV' correspond to multi-sortie campaigns with the same 5400 days of total surface operation as in 'V'. Based on these parameters and equivalency factors for Volume (V_{eq}), Power (P_{eq}), Cooling (C_{eq}), Crew-Time (CT_{eq}), and Location (L_{eq}) the ESM can be calculated for each scenario (as per Eq. 1 in section 2 of the SI)⁹⁷. Panels (b–e)

visualize the inventory breakdown by the expense-type contributing to the total ESM (b), type of system-component classified by associated resource (c), and composition of the inventory item (d and e): the bar-charts in panels (b–d) show the breakdown in ESM units (on the left, in mass [kg]), and the fractional breakdown of each scenario (on the right, unit-less), while in panel (e) the absolute (left, in mass [kg]) and fractional (right, unit-less) inventory breakdown in terms of material composition is visualized. An alternative representation of the data presented in (d and e) is given in Fig. S1c. ESM equivalent systems mass—for more information see BOX 1.

BOX 1

Assessment of Economics, feasibility and risk of mission-architecture

In-space biomanufacturing systems will need to demonstrate superiority over traditional systems in supporting crewed space-missions. To this end, traditional mission-designs must be directly comparable to those augmented with biomanufacturing. One of the more widely used metric to quantify specific attributes of life-support systems is Equivalent Systems Mass (ESM)^{51,52}. In brief, ESM allows mass, volume, power and crew-time to be converted into a single metric in kilograms-equivalent to predict the up-mass requirement as proxy for expense⁹⁷. ESM has become a standard metric also for comparing biomanufacturing systems^{98,99}, however, it cannot account for aspects such as risk, sustainability, recyclability, complexity, modularity, reliability, robustness, resilience, readiness, scalability, or safety.

As a complement to ESM, the concept of payback time (PBT)¹⁰⁰ has been developed to assess some of these criteria – PBT reflects cost, recyclability, and economic sustainability. Specifically, the PBT is useful in assessing ISRU options, as it allows comparison of the cost to launch and deploy (bio)manufacturing capabilities with the cost of a continuous resupply from Earth over time. Adding statistical risk assessments to the PBT can also help to quantify risk, safeguarding robust and reliable systems. For example, the concept could determine the statistical risk of landing on Mars, with the risk reduction of reduced number of landings on one side but a loss of the payloads carrying ISM hardware being more critical than failure of resupplying missions on the other side. The statistical value of those risk-factors must be carefully assessed based on previous missions, the general technology development roadmap, and the expected learning rates on those factors. Through reliable and generalizable analyses like these, the biomanufacturing approaches which are most vital can be meaningfully assessed.

mission support tool (class 2 to 4). However, before plans for implementation of biomanufacturing in mission architecture can be put into action, a holistic analysis that can directly compare the trade-offs between different mission-design scenarios with and without biomanufacturing is needed. An initial effort towards such an analysis is presented in the following.

Off-world mission-scenarios and bio-available inventories

CONOPS for ISM—the flow of resources and integration of LC with ISRU—not only differ depending on the off-world mission-class, but are dependent on and influenced by mission-design scenario. To assess the potential impact that biomanufacturing can have on mission-design more quantitatively, five distinct but comparable scenarios were established as per Fig. 2a (also see Table S2 and Fig. S1a). The outlined scenarios were designed with the objective of greatest comparability among destinations (Moon or Mars) and as such are agnostic of the previously discussed off-world classes which differentiate two levels of technology development for each destination (Fig. 1). Mission-design scenarios 'I' and 'II' correspond to single sorties to the Moon and to Mars, respectively, using standard surface operation duration⁴⁰. Meanwhile, scenarios 'III' to 'V' consider 5400 days of surface operations either as multi-sortie campaigns (scenarios 'III' and 'IV') or in a single sortie (scenario 'V'). Mission-design scenarios 'I' and 'III' may correspond to off-world mission-class 1 (or 2), while mission-design scenarios 'II', 'IV', and 'V' correspond to off-world mission-class 3 (or 4).

Using NASA's 'Advanced Life Support Sizing Analysis Tool' (ALSSAT)⁵⁰, an analysis of cargo inventory (environmental control and life support systems) broken down for each mission-design scenario and compared by means of Equivalent Systems Mass (ESM, further information in BOX 1)^{51,52} was conducted (see Supplementary Information section 2 for details on data aggregation and representation). The bar-charts in Fig. 2 decompose the operational expense by means of ESM, differentiated by the term contributing to the total ESM (mass, power, cooling, volume, crew-time in 2b), type of system-component classified by associated resource (waste, food, water, air, thermal in 2c), and composition of the inventory items (structural metal, plastic, water, biomass, electronics, etc. in 2d) for each scenario. This preliminary TEA-data serves as *prima facie* estimation for assessment of mission-cost and provides a primary step towards drawing a relationship from the availability of cargo resources to potential inventory items that lend themselves to ISM, in particular by means of biomanufacturing (Additional details on the compilation of the preliminary TEA-data are provided in both sections 2 and 3 of the SI).

Apart from the realization that long-duration and -distance journeys have the highest ESM effort, it is also not surprising that multiple trips are more expensive than a single sortie. Further, Fig. 2b highlights that across all scenarios the primary expense (in form of ESM) will be mass itself, followed by volume. More importantly, the analysis provides insight into resource and inventory differences, which has implications for applicability of ISM among the different mission-design scenarios: Fig. 2c shows that scenarios 'I' and 'III' (Moon) are dominated by air systems (-30% and 26%, respectively) while scenarios 'II', 'IV' and 'V' (Mars) are dominated by food systems (-38%, 38% and 59%, respectively), which supports the biomanufacturing schema breakdown in Fig. 1. Further, with an estimated -12% to 16% of the total cargo-mass being water, the associated systems contribute -15% to 20% of total ESM (Fig. 2c). Because the mass contribution from water systems is higher for scenarios 'I' and 'II', any employed biomanufacturing strategy should be geared towards LC for water-recovery and -reuse. The same is true for air supply and conditioning in case of scenarios 'I' and 'III'. Across all scenarios the greatest expenses in form of commodities (2d and 2e) are accountable to structural metals, plastics, water, and biomass.

Most notably, Fig. 2c shows that both, the mass and ESM for each scenario, are dominated by cargo composed of metal and plastics. Unfortunately, structural metal is likely to remain unsuitable for biomanufacturing for the foreseeable future. While biomanufacturing for space-exploration is most frequently conceived towards food production or therapeutics for sustaining astronauts, we find that materials hold greatest promise to save up-mass through ISM: in Lunar scenarios, plastic increases from -19% to -37% of total mass with increased mission-duration; in Martian scenarios, plastic increases from -48% to -60%. This supports the emphasis on ISM of these materials with increasing mission-duration and -reach.

Integrating biomanufacturing with mission-architecture

Production of materials for manufacturing

Just like for production food or pharmaceuticals, biomanufacturing of materials may support the fabrication of consumable and durable goods made of plastics^{15,53,54}, metals^{55,56}, and ceramics⁵⁷ (-18% to 60%, -13% to 50%, and -1% of total mission ESM respectively, Fig. 2d). The capacity for off-world ISM of materials and fabrication of mission objects will depend on their uses and sizes ranging from small replacement parts and functional tools to physical components of the life-supporting habitat^{58,59}: the extent of initially required critical infrastructure^{60,61} dictates the degree to which ISM can be integrated with mission-architecture.

In combination with additive manufacturing⁶², thermoplastic biomaterials (e.g. polyesters like polyhydroxyalkanoates) could make up the majority of high-turnover items with regular demand, while also providing for contingencies, i.e., non-anticipated servicing and repairs of incidental nature. Such polymeric constructs can be derived from basic feedstocks in a more compact and integrated way when using a bioprocess rather than chemical synthesis. This advantage is greatest in the case of comparatively (to Earth-based manufacturing industry) low demand and throughput^{8,10}. Biomanufacturing may also enable the production of high-performance polymers, such as for example thermoset aramids and arylates, which have a range of applications in space technology^{53,63}.

While present in abundance, soil and rock are little versatile, due to the limited mechanical properties of regolith (i.e. low flexibility and plasticity)^{64–66}. For surface operations as components of buildings and structures, processing via e.g. solar/laser or microwave sintering⁶⁷, and autonomous 3D-printing of regolith composites with binding resins has been proposed and prototyped as means to manufacture infrastructure (see Supplementary Information section 4 for an overview of recent advancements)^{68,69}. Both approaches still require significant up-mass to deploy auxiliary equipment for e.g., stripping and processing of topsoil, as well as the raw material for the binding resin. If, however, binding agents (e.g. bioderived thermoplastics or thermosets) could also be produced on-site from in situ resources, an additive manufacturing method may become immediately more feasible^{70,71}.

Another possibility to leverage regolith as an in situ resource is to extract certain elements of interest for further processing and application. Specifically, this pertains to metals, the second most contributor to total ESM, as per the forgone analysis (Fig. 2d and e). Performed with microorganisms, a process known as bioleaching or biomining is already being applied on Earth (e.g., for 20% to 30% of global copper production⁷²). For space applications, biomining/-leaching is distinguished into three classes of resources: (1) metals and minerals like iron and sulfur oxides^{73,74} or silicates⁷⁵, all of which are common in various regolith types (Fig. 1b) and can be extracted for construction purposes and other bulk applications¹³; (2) rare earth elements for specialty applications like lanthanides, scandium, and yttrium, which can be extracted from specific regolith types⁷⁶; (3) noble metals found in components of electronics brought from Earth

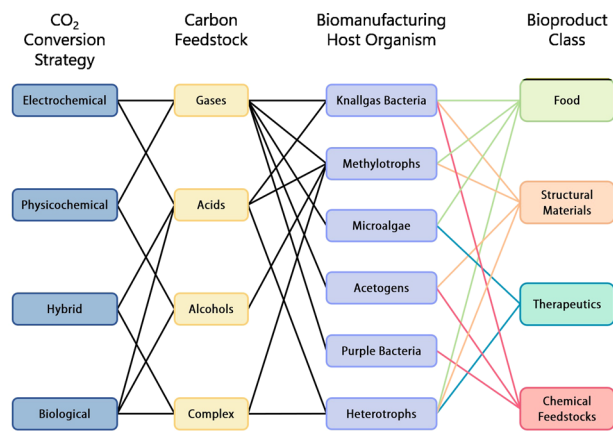


Fig. 3 | Breakdown of available routes for bioproduction of inventory items from carbon dioxide—either as in situ or recovered resource. Connecting lines represent possible paths for carbon-compound conversion of intermediates to products. Usability of different feedstocks is tied to nutritional mode of the microbial host organism (more than one nutritional mode is possible for certain organisms). Classes of products are assigned to respective microbes in respect of their metabolism as well as not represented ‘shadow-characteristics’ of the chassis (e.g., aerobic/anaerobic, prokaryotic/eukaryotic, metabolic rate, robustness, etc.), rather than ability to (naturally) derive the respective compounds. Products may or may not comprise some of the initial feedstocks, hence consecutive runs through this chart to up-cycle carbon are conceivable.

(e.g., copper), to be reused for new circuitry. While (1) and (2) are part of ISRU and (3) contributes to LC, all of these extractive bioprocesses can be coupled with additive manufacturing technologies (e.g. Selective Laser Melting & Sintering) for perpetual or on-demand ISM.

Technologies for production of biomaterials, in particular bioplastics, from waste-derived feedstocks such as end-of-life products and/or carbon dioxide are immediately relevant to providing solutions for the most pressing challenges of humanity on Earth. This includes mitigation of greenhouse gas emissions through carbon-capture and -neutrality (i.e., LC), as well as reduction of environmental pollution by replacing durable synthetic materials with biodegradable alternatives. Biomaterials production from inorganic carbon and/or waste-streams is therefore an enabling technology for the evolution of a circular economy and sustainable (bio)chemical industry on Earth⁷⁷. Biomining and -leaching technologies would further contribute to advancement of remediation techniques, also contributing to move towards a more sustainable and circular economy.

Rational coupling of biological systems and resources

Selection of the specific feedstocks utilizable for different ISM purposes must be guided by critical consideration for recycling of resources at molecular and elemental level—any dead-end, non-recyclable stream will eventually require a resupply from Earth. For auxiliary functions (e.g., materials for additive manufacturing), production volume is more important than continuity and response time (as is critical for food and therapeutics), therefore requiring the adaptation of widely available resources (carbon dioxide and derivable single-carbon compounds or crude biomass)^{14,78}, either directly (where available), or through (physico)chemical means (e.g., as secondary beneficiary of propellant production from in situ resources)⁷⁹. Hence, the collective approach to more deeply developing synthetic biological tools for bio-ISM must begin with the feedstocks—sugars or other purified multi-carbon compounds (e.g., higher alcohols and fatty acids) will likely not be the prime substrates of biomanufacturing in space, but rather the products/intermediates in a manufacturing chain or loop that serves life-support (within LC elements such as regeneration of oxygen and waste reclamation)³⁴. This includes hybrid-strategies like the abiotic synthesis of sugars as substrates⁸⁰.

Critically, because in space savings on payload supersedes commercial relevance, adaptation of non-model microbes that save mass is much more valuable. The range of microbial taxa being proposed and investigated for in space-applications is, however, still narrow and often limited to the few model organisms (e.g., *E. coli* and *S. cerevisiae*) whose popularity in Earth-based applications is mostly rooted in legacy. Although a great deal of progress has been made to adapt these organisms to utilization of single-carbon feedstocks^{81,82}, they are still outclassed by organisms naturally capable of these functions^{83–85}. Therefore, species with nutritional modes and metabolism uniquely suited to leverage resources available through LC and ISRU must be considered for development of ISM systems, basing their selection on application (feedstock/product pairing, scale, continuity, and responsiveness of the respective process) and scenario-specific criteria (environmental parameters)^{34,86,87}. Specifically, organisms with the ability to assimilate single-carbon compounds alongside organics (mixotrophy) are most suitable. For this purpose, expansion of metabolic engineering efforts to create (synthetic) pathways that increase the carbon-efficiency of metabolism and/or allow the catabolism and subsequent up-cycling of non-natural feedstocks, like e.g., synthetic plastics, is also sensible^{88,89}. To illustrate these considerations, a qualitative breakdown of possible production routes/flow of carbon through different biomanufacturing approaches for inventory items from off-world class-dependent in situ resources is established in Fig. 3. While metabolic engineering theoretically allows almost any bio-available compound to be produced in any organism, the effort required for realization can be excessive. For example, oxygen-dependent pathways will hardly be functional in obligate anaerobes without extensive modifications. Likewise, correct folding of proteins with high post-translational modifications in prokaryotes is unlikely.

Implementing off-world biomanufacturing—fundamental needs

Readying microbial production systems for space

While the concept of space biomanufacturing has been around for several decades^{90–92}, its application is still limited to individual small-scale microgravity experiments⁹³. To ready bio-ISM technologies for implementation in mission architectures, scaling and adaptation of synthetic biology and bioprocess engineering to the relevant (off-world) environments (specifically Moon and Mars) is needed^{16,94}. To this end, the appropriate hardware must be co-developed with the respective microbial cell factories for in-space bio-ISM⁹⁵. The required investments and their allocation to realize this goal have recently been outlined⁹⁶.

To evolve the technological readiness of space bio-ISM furthermore requires scientists and engineers from various fields, spanning biology, chemistry, physics, and engineering, to work together and build cross-compatible and scalable processing systems within the confines and stressors of space¹⁶. Biomolecular, bioprocess, and bio-systems engineering must be integrated with pre-processing of resources and downstream processing of products, and tied in with mission-support infrastructure and logistics. Coordination mission specialists are critical to deploy tests in space under different (off-world) constraints and build long-term partnerships and understanding between the public and private sectors. Such groundwork requires long-lived multidisciplinary centers that are secure from volatility of markets and swings of political agendas to perform the large-scale, long-term science that is necessary to succeed. A dedicated space-based R&D Hub as an associated ‘field-station’ could greatly streamline and facilitate the advancement of fundamental technology that increases TRLs. Service providers would dedicate and manage resources both on the ISS (near-term), next-generation space station(s) (mid-term), and the Moon as test-bed for Mars (long-term). This

pipeline would ensure testing, prototyping, and maturation of technologies in space with assigned, predictable launches, hardware and support.

Prioritizing bio-ISM technology development

The strategic application of biomanufacturing has the potential to de-risk and expand crewed space-exploration capabilities. The farther from Earth the more mission-critical biomanufacturing becomes—Lunar missions may be not sustained only supplemented with LC, recycling and re-purposing of waste-streams, Mars missions will require ISRU. To take full advantage of mission supplies and in situ resources, advanced biomanufacturing technologies must be developed—given the austerity of the Moon and Mars, research efforts must be geared towards the most abundant resources to benefit future deep-space missions. Near-term Lunar missions will serve to build-out and stress-test LC technologies that will inform long-term ISM processes on Mars. Techno-economic assessment of mission-design scenarios directs the strategic development goals and can, as opposed to hardware, be readily implemented. Resource efficiency will be essential to successful deep-space missions, but it is also a criterion that is becoming increasingly salient amid our changing world. Developing technologies that operate with circularity at their core have significant potential to bring opportunities to imminent challenges on Earth.

Data availability

Supplementary materials include: (1) Supplementary Information document containing supporting and additional information such as a rendering of data used to produce Fig. 2; (2) Supplementary Dataset 1 including Jupyter notebook for plotting the results using spreadsheets as input. The provided materials are sufficient for reproducing all results, additional data can be requested from the corresponding authors.

References

- Smith, M. et al. The artemis program: an overview of NASA's activities to return humans to the moon. In *2020 IEEE Aerospace Conference*, 1–10 (IEEE, 2020). <https://ieeexplore.ieee.org/document/9172323>.
- Flores, G. et al. Deep space habitation: establishing a sustainable human presence on the moon and beyond. In *2021 IEEE Aerospace Conference (50100)*, 1–7 (IEEE, 2021). <https://ieeexplore.ieee.org/document/9438260>.
- Creech, S., Guidi, J. & Elburn, D. Artemis: an overview of NASA's activities to return humans to the moon. In *IEEE Aerospace Conference* (IEEE, Big Sky, MT, 2022). <https://doi.org/10.1109/AERO53065.2022.9843277>.
- Drake, B. G., Hoffman, S. J. & Beaty, D. W. Human exploration of Mars, design reference architecture 5.0. In *Aerospace Conference, 2010 IEEE*, 1–24 (IEEE, 2010). <https://doi.org/10.1109/AERO.2010.5446736>.
- Musk, E. Making humans a multi-planetary species. *New Space* **5**, 46–61 (2017).
- Wertz, J. R. & Larson, W. J. *Reducing space mission cost*. (Microcosm Press Torrance, CA, 1996).
- Moore, C. L. Technology development for human exploration of Mars. *Acta Astronautica* **67**, 1170–1175 (2010).
- Nangle, S. N. et al. The case for biotech on Mars. *Nat. Biotechnol.* **38**, 401–407 (2020).
- Miranda, D. 2020 NASA Technology Taxonomy. Tech. Rep., National Aeronautics and Space Administration, Washington DC (2020). <https://ntrs.nasa.gov/citations/20200000399>.
- Berliner, A. J. et al. Towards a biomanufactory on mars. *Front. Astronomy Space Sci.* **8**, 120 (2021).
- Cockell, C. S. Bridging the gap between microbial limits and extremes in space: space microbial biotechnology in the next 15 years. *Microb. Biotechnol.* **15**, 29–41 (2022).
- Gumulya, Y., Zea, L. & Kaksonen, A. H. In situ resource utilisation: the potential for space biomineral. *Minerals Engineer.* **176**, 107288 (2022).
- Santomartino, R., Zea, L. & Cockell, C. S. The smallest space miners: principles of space biomineral. *Extremophiles* **26**, 7 (2022).
- Verseux, C. et al. Sustainable life support on Mars—the potential roles of cyanobacteria. *Int. J. Astrobiol.* **15**, 65–92 (2016).
- Mapstone, L. J., Leite, M. N., Purton, S., Crawford, I. A. & Dartnell, L. Cyanobacteria and microalgae in supporting human habitation on Mars. *Biotechnol. Adv.* **59**, 107946 (2022).
- Berliner, A. J. et al. Space bioprocess engineering on the horizon. *Commun. Engineer.* **1**, 13 (2022).
- Moses, R. W. & Bushnell, D. M. Frontier in-situ resource utilization for enabling sustained human presence on mars. Tech. Rep., National Aeronautics and Space Administration, Washington DC (2016). <https://ntrs.nasa.gov/citations/20160005963>.
- Linne, D., Sanders, G., Kleinhenz, J. & Moore, L. Current NASA In-Situ Resource Utilization (ISRU) Strategic Vision. In *Space Resources Roundtable Planetary & Terrestrial Mining and Sciences Symposium*, GRC-E-DAA-TN69644 (2019). https://www.exploremars.org/wp-content/uploads/2021/09/O915_1200_Gerry-Sanders_ISRU.pdf.
- Green, R. D. & Kleinhenz, J. E. In-situ resource utilization (ISRU) Living off the Land on the Moon and Mars. In *American Chemical Society National Meeting & Exposition*, 1–41 (National Aeronautics and Space Administration, Cleveland, OH, 2019). <https://ntrs.nasa.gov/citations/201900025283>.
- Escobar, C. & Nability, J. Past, present, and future of closed human life support ecosystems—a review. In *47th International Conference on Environmental Systems*, 1–18 (47th International Conference on Environmental Systems, Charleston, SC, 2017). <https://ttu-ir.tdl.org/handle/2346/73083>.
- Johnson, A. R. Biodiversity requirements for self-sustaining space colonies. *Futures* **110**, 24–27 (2019).
- Helisch, H., Lapierre, F., Chak, J.-K., Fasoulas, S. & Heyer, A. Close the gap—Potential of microalgal biomass for closed ECLSS and future in-situ resource utilization in space. In *49th International Conference on Environmental Systems* (49th International Conference on Environmental Systems, 2019).
- Revellame, E. D. et al. Microalgae cultivation for space exploration: assessing the potential for a new generation of waste to human life-support system for long duration space travel and planetary human habitation. *Algal Res.* **55**, 102258 (2021).
- Ellery, A. Supplementing closed ecological life support systems with in-situ resources on the moon. *Life* **11** (2021). <https://www.mdpi.com/2075-1729/11/8/770>.
- Lee, S. Y. et al. A comprehensive metabolic map for production of bio-based chemicals. *Nat. Catalysis* **2**, 18–33 (2019).
- Energy Efficiency & Renewable Energy. Agile Biofoundry Metabolic Map. United States Department of Energy <https://agilebiofoundry.org/metabolic-map-3/>.
- Crawford, I. A. Lunar resources: a review. *Prog. Phys. Geogr.* **39**, 137–167 (2015).
- Menezes, A. A., Cumbers, J., Hogan, J. A. & Arkin, A. P. Towards synthetic biological approaches to resource utilization on space missions. *J. R. Soc. Interface* **12**, 1–20 (2015).
- Menezes, A. A., Montague, M. G., Cumbers, J., Hogan, J. A. & Arkin, A. P. Grand challenges in space synthetic biology. *J. R. Soc. Interface* **12** (2015). <http://rsif.royalsocietypublishing.org/lookup/doi/10.1098/rsif.2015.0803>.

30. Heinicke, C. et al. Equipping an extraterrestrial laboratory: overview of open research questions and recommended instrumentation for the Moon. *Adv. Space Res.* **68**, 2565–2599 (2021).
31. Shull, S. & de Weck, O. Modeling and simulation of lunar campaign logistics. In *AIAA SPACE 2007 Conference & Exposition* (2007). <https://arc.aiaa.org/doi/abs/10.2514/6.2007-6244>.
32. Ishimatsu, T., de Weck, O. L., Hoffman, J. A., Ohkami, Y. & Shishko, R. Generalized multicommodity network flow model for the earth-moon-mars logistics system. *J. Spacecraft Rockets* **53**, 25–38 (2016).
33. Robinson, K. L. & Taylor, G. J. Heterogeneous distribution of water in the Moon. *Nat. Geosci.* **7**, 401–408 (2014).
34. Aversch, N. J. H. Choice of microbial system for in-situ resource utilization on Mars. *Front. Astronomy Space Sci.* **8**, 116 (2021).
35. Klaus, D. M. Microgravity and its implications for fermentation biotechnology. *Trends Biotechnol.* **16**, 369–373 (1998).
36. Huang, B., Li, D.-G., Huang, Y. & Liu, C.-T. Effects of spaceflight and simulated microgravity on microbial growth and secondary metabolism. *Military Med. Res.* **5**, 18 (2018).
37. Senatore, G., Mastroleone, F., Leys, N. & Mauriello, G. Effect of microgravity & space radiation on microbes. *Future Microbiol.* **13**, 831–847 (2018).
38. Mankins, J. C. Technology readiness levels. *White Paper, April* **6**, 1995 (1995).
39. Frerking, M. A. & Beauchamp, P. M. JPL technology readiness assessment guideline. In *2016 IEEE Aerospace Conference*, 1–10 (IEEE, 2016). <https://doi.org/10.1109/AERO.2016.7500924>.
40. Ewert, M. K., Chen, T. T. & Powell, C. D. Life support baseline values and assumptions document. Tech. Rep., NASA, Washington DC (2022). <https://ntrs.nasa.gov/citations/20210024855>.
41. Wong, J. Y. On-site 3D printing of functional custom mallet splints for Mars analogue crewmembers. *Aerospace Med. Hum. Perform.* **86**, 911–914 (2015).
42. Kading, B. & Straub, J. Utilizing in-situ resources and 3D printing structures for a manned Mars mission. *Acta Astronautica* **107**, 317–326 (2015).
43. Wong, J. Y. & Pfahnl, A. C. 3D printed surgical instruments evaluated by a simulated crew of a Mars mission. *Aerospace Med. Hum. Perform.* **87**, 806–810 (2016).
44. Zaccardi, F., Toto, E., Santonicola, M. G. & Laurenzi, S. 3D printing of radiation shielding polyethylene composites filled with Martian regolith simulant using fused filament fabrication. *Acta Astronautica* **190**, 1–13 (2022).
45. Castellini, F., Simonetto, A., Martini, R. & Lavagna, M. A mars communication constellation for human exploration and network science. *Adv. Space Res.* **45**, 183–199 (2010).
46. Araniti, G., Bisio, I. & De Sanctis, M. Interplanetary Networks: Architectural Analysis, Technical Challenges and Solutions Overview. In *2010 IEEE International Conference on Communications*, 1–5 (2010).
47. Biswal, M. K., Kumar, R., Das, N. B. & Srivardani, A. Review on human interplanetary exploration challenges. In *AIAA SCITECH 2022 Forum* (2022). <https://doi.org/10.2514/6.2022-2585>.
48. Holowko, M. B., Frow, E. K., Reid, J. C., Rourke, M. & Vickers, C. E. Building a biofoundry. *Synthetic Biol. (Oxford, England)* **6**, ysaa026 (2021).
49. Sandahl, A. F. et al. On-demand synthesis of phosphoramidites. *Nat. Commun.* **12**, 2760 (2021).
50. Lin, C. H., Ewert, M. K., (Jannivine) Yeh, H. Y., Brown, C. B. & Jeng, F. F. ALSSAT Development Status and Its Applications in Trade Studies. In *International Conference On Environmental Systems* (SAE International, 2004). <https://doi.org/10.4271/2004-01-2438>.
51. Levri, J. A., Vaccari, D. A. & Drysdale, A. E. Theory and application of the equivalent system mass metric. In *International Conference On Environmental Systems*, 12 (SAE Technical Paper, 2000). <https://doi.org/10.4271/2000-01-2395>.
52. Levri, J. et al. Advanced life support equivalent system mass guidelines document. Tech. Rep., National Aeronautics and Space Administration, Washington DC (2003). <https://ntrs.nasa.gov/citations/20040021355>.
53. Aversch, N. J. H. & Rothschild, L. J. Metabolic engineering of *Bacillus subtilis* for production of para-aminobenzoic acid - unexpected importance of carbon source is an advantage for space application. *Microbial. Biotechnol.* **12**, 703–714 (2019).
54. Kelwick, R. J. R., Webb, A. J. & Freemont, P. S. Biological materials: the next frontier for cell-free synthetic biology. *Front. Bioengineer. Biotechnol.* **8** (2020). <https://www.frontiersin.org/articles/10.3389/fbioe.2020.00399>.
55. Everton, S. K., Hirsch, M., Stravroulakis, P., Leach, R. K. & Clare, A. T. Review of in-situ process monitoring and in-situ metrology for metal additive manufacturing. *Mater. Design* **95**, 431–445 (2016).
56. Werkheiser, N. In-space manufacturing: pioneering a sustainable path to Mars. Tech. Rep., National Aeronautics and Space Administration, Washington DC (2015). <https://ntrs.nasa.gov/citations/20150022327>.
57. Karl, D. et al. Sintering of ceramics for clay in situ resource utilization on Mars. *Open Ceramics* (2020). <https://doi.org/10.1016/j.oceram.2020.100008>.
58. Owens, A., Do, S., Kurtz, A. & Weck, O. d. Benefits of additive manufacturing for human exploration of mars. In *45th International Conference on Environmental Systems*, 1–17 (45th International Conference on Environmental Systems, Bellevue, WA, 2015). <http://hdl.handle.net/2346/64526>.
59. Makaya, A. et al. Towards out of earth manufacturing: overview of the ESA materials and processes activities on manufacturing in space. *CEAS Space Journal* (2022). <https://doi.org/10.1007/s12567-022-00428-1>.
60. Gruenwald, J. Human outposts on Mars: engineering and scientific lessons learned from history. *CEAS Space J.* **6**, 73–77 (2014).
61. Cichan, T. et al. Mars Base Camp: an architecture for sending humans to Mars. In *New Space*, vol. 5, 203–218 (IEEE, 2017). <https://www.liebertpub.com/doi/10.1089/space.2017.0037>.
62. Zocca, A. et al. Challenges in the technology development for additive manufacturing in space. *Chin. J. Mech. Engineer.: Addit. Manufact.* *Front.* 100018 (2022). <https://doi.org/10.1016/j.cjmeam.2022.100018>.
63. Aversch, N. J. H. et al. High-performance polyesters from carbon dioxide – novel polyhydroxyarylates from engineered *Cupriavidus necator*. *bioRxiv* (2023). <https://www.biorxiv.org/content/early/2023/03/11/2021.12.12.472320>.
64. Myung, J., Flanagan, J. C. A., Waymouth, R. M. & Criddle, C. S. Expanding the range of polyhydroxyalkanoates synthesized by methanotrophic bacteria through the utilization of omega-hydroxyalkanoate co-substrates. *AMB Express* **7**, 118 (2017).
65. Zhang, L. et al. Effective production of Poly(3-hydroxybutyrate-co-4-hydroxybutyrate) by engineered *Halomonas bluephagenesis* grown on glucose and 1,4-Butanediol. *Bioresource Technol.* **355**, 127270 (2022).
66. Choi, S. Y. et al. One-step fermentative production of poly (lactate-co-glycolate) from carbohydrates in *Escherichia coli*. *Nat. Biotechnol.* **34**, 435–440 (2016).
67. Srivastava, V., Lim, S. & Anand, M. Microwave processing of lunar soil for supporting longer-term surface exploration on the Moon. *Space Policy* **37**, 92–96 (2016).
68. Taylor, S. L. et al. Sintering of micro-trusses created by extrusion-3D-printing of lunar regolith inks. *Acta Astronautica* **143**, 1–8 (2018).
69. Isachenkov, M., Chugunov, S., Akhatov, I. & Shishkovsky, I. Regolith-based additive manufacturing for sustainable

- development of lunar infrastructure - an overview. *Acta Astronautica* **180**, 650–678 (2021).
70. Li, H. et al. 3D printing and solvent dissolution recycling of polylactide-lunar regolith composites by material extrusion approach. *Polymers* **12** (2020). <https://www.mdpi.com/2073-4360/12/8/1724>.
71. Jakus, A. E., Koube, K. D., Geisendorfer, N. R. & Shah, R. N. Robust and elastic lunar and martian structures from 3D-printed regolith Inks. *Sci. Rep.* **7**, 44931 (2017).
72. Yin, S. et al. Copper bioleaching in China: review and prospect. *Minerals* **8** (2018). <https://www.mdpi.com/2075-163X/8/2/32>.
73. Castelein, S. M. et al. Iron can be microbially extracted from Lunar and Martian regolith simulants and 3D printed into tough structural materials. *PLOS ONE* **16**, 1–21 (2021).
74. Marrero, J., Coto, O. & Schippers, A. 11 Metal bioleaching: fundamentals and geotechnical application of aerobic and anaerobic acidophiles. In Lee, N. M. (ed.) *Biotechnological Applications of Extremophilic Microorganisms*, 261–288 (De Gruyter, 2020). <https://doi.org/10.1515/9783110424331-011>.
75. Cockell, C. S. & Santomartino, R. Mining and microbiology for the solar system silicate and basalt economy. *Space manufacturing resources: earth and planetary exploration applications*. Wiley, Hoboken (2021).
76. McLeod, C. L. & Krekeler, M. P. S. Sources of extraterrestrial rare earth elements: to the moon and beyond. *Resources* **6** (2017). <https://www.mdpi.com/2079-9276/6/3/40>.
77. Rothschild, L. J., Koehne, J., Gandhiraman, R., Navarrete, J. & Spangle, D. Urban biomineralogy meets printable electronics: end-to-end at destination biological recycling and reprinting. Tech. Rep., National Aeronautics and Space Administration, Washington DC (2017). <https://ntrs.nasa.gov/api/citations/20170004558/downloads/20170004558.pdf>.
78. Cotton, C. A. R., Claassens, N. J., Benito-Vaquerizo, S. & Bar-Even, A. Renewable methanol and formate as microbial feedstocks. *Curr. Opin. Biotechnol.* **62**, 168–180 (2020).
79. Sheehan, S. W. Electrochemical methane production from CO₂ for orbital and interplanetary refueling. *iScience* **24**, 102230 (2021).
80. Cestellos-Blanco, S. et al. Toward abiotic sugar synthesis from CO₂ electrolysis. *Joule* **6**, 2304–2323 (2022).
81. Gleizer, S. et al. Conversion of *Escherichia coli* to generate all biomass carbon from CO₂. *Cell* **179**, 1255–1263 (2019).
82. Gassler, T. et al. The industrial yeast *Pichia pastoris* is converted from a heterotroph into an autotroph capable of growth on CO₂. *Nat. Biotechnol.* **38**, 210–216 (2020).
83. Sahoo, K. K., Goswami, G. & Das, D. Biotransformation of methane and carbon dioxide into high-value products by methanotrophs: current state of art and future prospects. *Front. Microbiol.* **12** (2021). <https://www.frontiersin.org/article/10.3389/fmicb.2021.636486>.
84. Pavan, M. et al. Advances in systems metabolic engineering of autotrophic carbon oxide-fixing biocatalysts towards a circular economy. *Metabolic Engineer.* **71**, 117–141 (2022).
85. Scown, C. D. & Keasling, J. D. Sustainable manufacturing with synthetic biology. *Nat. Biotechnol.* **40**, 304–307 (2022).
86. Ramalho, T. P. et al. Selection of *Anabaena* sp. PCC 7938 as a cyanobacterium model for biological ISRU on Mars. *Appl. Environ. Microbiol.* **0**, (2022). <https://doi.org/10.1128/aem.00594-22>
87. Ramalho, T. P. et al. On the growth dynamics of the cyanobacterium *Anabaena* sp. PCC 7938 in Martian regolith. *npj Microgravity* **8**, 43 (2022).
88. Tiso, T. et al. The metabolic potential of plastics as biotechnological carbon sources - review and targets for the future. *Metabolic Engineer.* **71**, 77–98 (2022).
89. Sullivan, K. P. et al. Mixed plastics waste valorization through tandem chemical oxidation and biological funneling. *Science* **378**, 207–211 (2022).
90. Todd, P. Space bioprocessing. *Bio/Technology* **3**, 786–790 (1985).
91. Westgate, P., Kohlmann, K., Hendrickson, R. & Ladisch, M. R. Bioprocessing in space. *Enzyme Microb.* **14**, 76–79 (1992).
92. Horneck, G., Klaus, D. M. & Mancinelli, R. L. Space microbiology. *Microbiol. Mol. Biol. Rev.* **74**, 121–156 (2010).
93. Cockell, C. S. et al. Space station biomineral experiment demonstrates rare earth element extraction in microgravity and Mars gravity. *Nat. Commun.* **11**, 1–11 (2020).
94. Sharma, G. & Curtis, P. D. The impacts of microgravity on bacterial metabolism. *Life* **12** (2022). <https://www.mdpi.com/2075-1729/12/6/774>.
95. Smanski, M. J. et al. Bioindustrial manufacturing readiness levels (BioMRLs) as a shared framework for measuring and communicating the maturity of bioproduct manufacturing processes. *J. Ind. Microbiol. Biotechnol.* **49** (2022). <https://doi.org/10.1093/jimb/kuac022>.
96. Aversch, N. J. H. et al. What to take? When to make? How to break even? Avoid mistakes in microbial biomanufacturing in support of human near-to-deep-space exploration. Tech. Rep., National Aeronautics and Space Administration, Washington DC (2021). <https://ntrs.nasa.gov/citations/20210026230>.
97. Ho, D., Makrygiorgos, G., Hill, A. & Berliner, A. J. Towards an extension of equivalent system mass for human exploration missions on Mars. *npj Microgravity* **8**, 30 (2022).
98. Drecksler, S., Sen Gupta, S., Benvenuti, A. & Menezes, A. Effects of space biomanufacturing on fuel production alternatives for Mars exploration. In *50th International Conference on Environmental Systems (ICES)* (2020 International Conference on Environmental Systems, 2020).
99. Benvenuti, A. J. et al. Design of Anaerobic Digestion Systems for Closed Loop Space Biomanufacturing. In *50th International Conference on Environmental Systems (ICES)* (2020).
100. Volger, R. et al. Theoretical bioreactor design to perform microbial mining activities on Mars. *Acta Astronautica* **170**, 354–364 (2020).
101. Taylor, G. J. et al. Modal analyses of lunar soils by quantitative X-ray diffraction analysis. *Geochim. Cosmochim. Acta* **266**, 17–28 (2019).
102. Foley, C. N., Economou, T. & Clayton, R. N. Final chemical results from the Mars Pathfinder alpha proton X-ray spectrometer. *J. Geophys. Res.: Planets* **108** (2003). <https://agupubs.onlinelibrary.wiley.com/doi/abs/10.1029/2002JE002019>.
103. Christensen, P. R. Water at the poles and in permafrost regions of Mars. *Elements* **2**, 151–155 (2006).
104. Spudis, P. D. et al. Evidence for water ice on the Moon: results for anomalous polar craters from the LRO Mini-RF imaging radar. *J. Geophys. Res.: Planets* **118**, 2016–2029 (2013).
105. Ambrose, W. Water and hydrogen resources on the Moon, Mercury, and Mars. In *AAPG Annual Convention and Exhibition* (Houston, TX, 2014). <https://www.searchanddiscovery.com/abstracts/html/2014/90189ace/abstracts/1840560.html>.
106. Nazari-Sharabian, M., Aghababaei, M., Karakouzian, M. & Karami, M. Water on Mars—a literature review. *Galaxies* **8**, 40 (2020).

Acknowledgements

We thank the many members of the ‘Center for the Utilization of Biological Engineering in Space’ (CUBES) who were involved in discussions that lead to the conception of the ideas for this study. As such, this material is partially based upon work supported by NASA under grant or cooperative agreement award number NNX17AJ31G. Any opinions, findings, and conclusions or recommendations expressed in this material are those of the author(s) and do not necessarily reflect the views of the National Aeronautics and Space Administration (NASA).

Author contributions

N.J.H.A. and A.J.B. conceived of the study and conceptualized the manuscript with help from S.N.N. as a whitepaper for the '2023 Decadal Survey in Biological and Physical Sciences in Space'⁹⁶ of the National Aeronautics and Space Administration (NASA), conducted by the National Academies of Sciences, Engineering, and Medicine (NAEM). A.J.B. designed the concepts-of-operation with supported from N.J.H.A. and conducted the techno-economic analysis of mission-design scenarios together with S.Z., G.L.V. and D.H. N.J.H.A. composed the remaining sections (supported by S.N.N., B.A.E.L., J.E.S. and K.B.C.) and performed their integration. A.J.B. and N.J.H.A. headed the graphics effort with assistance from D.H. and S.N.N. L.R.D., C.A.C., S.N.N., and A.P.A. edited the manuscript.

Competing interests

S.N.N. is an employee of Circe Bioscience Inc., a biomanufacturing company with financial interest in the microbiological production of foods. All other authors declare no competing interests.

Additional information

Supplementary information The online version contains supplementary material available at <https://doi.org/10.1038/s41467-023-37910-1>.

Correspondence and requests for materials should be addressed to Nils J. H. Aversch, Aaron J. Berliner or Shannon N. Nangle.

Peer review information *Nature Communications* thanks Cyprien Ver-seux and the other, anonymous, reviewer(s) for their contribution to the peer review of this work.

Reprints and permissions information is available at <http://www.nature.com/reprints>

Publisher's note Springer Nature remains neutral with regard to jurisdictional claims in published maps and institutional affiliations.

Open Access This article is licensed under a Creative Commons Attribution 4.0 International License, which permits use, sharing, adaptation, distribution and reproduction in any medium or format, as long as you give appropriate credit to the original author(s) and the source, provide a link to the Creative Commons license, and indicate if changes were made. The images or other third party material in this article are included in the article's Creative Commons license, unless indicated otherwise in a credit line to the material. If material is not included in the article's Creative Commons license and your intended use is not permitted by statutory regulation or exceeds the permitted use, you will need to obtain permission directly from the copyright holder. To view a copy of this license, visit <http://creativecommons.org/licenses/by/4.0/>.

© The Author(s) 2023