

# Heritage and Development

©MIT Delft University of Technology

Marie-Thérèse van Thoor

April 8, 2019

1

Research portfolio Department  MIT TU Delft

# **Design and History.**

## **Modification, Intervention and Transformation of the historic context**

April 8, 2019

2

I Knowledge of the Past

II Intervention

III Societal Framework: attitude,  
conditions, institutions

# I Knowledge of the Past

- a. History of the context
- b. Technical assessment and analysis
- c. Value assessment

# II Intervention

a. Intervention techniques

b. Intervention analysis

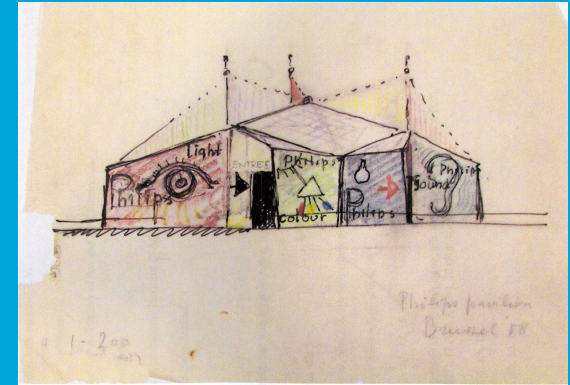
c. Concepts and methods of interventions and preservation

# Societal Framework: attitude, conditions and institutions

Instruments and legislation on preservation of historic monuments, buildings and sites on a national, European and international level (incl Unesco and mutual heritage)

# Rietveld's Universe

## Research on Gerrit Rietveld's work in its local, national and international context



April 8, 2019

7



April 8, 2019

8



# Instruments and legislation on preservation of historic monuments, buildings and **sites**

April 8, 2019

9

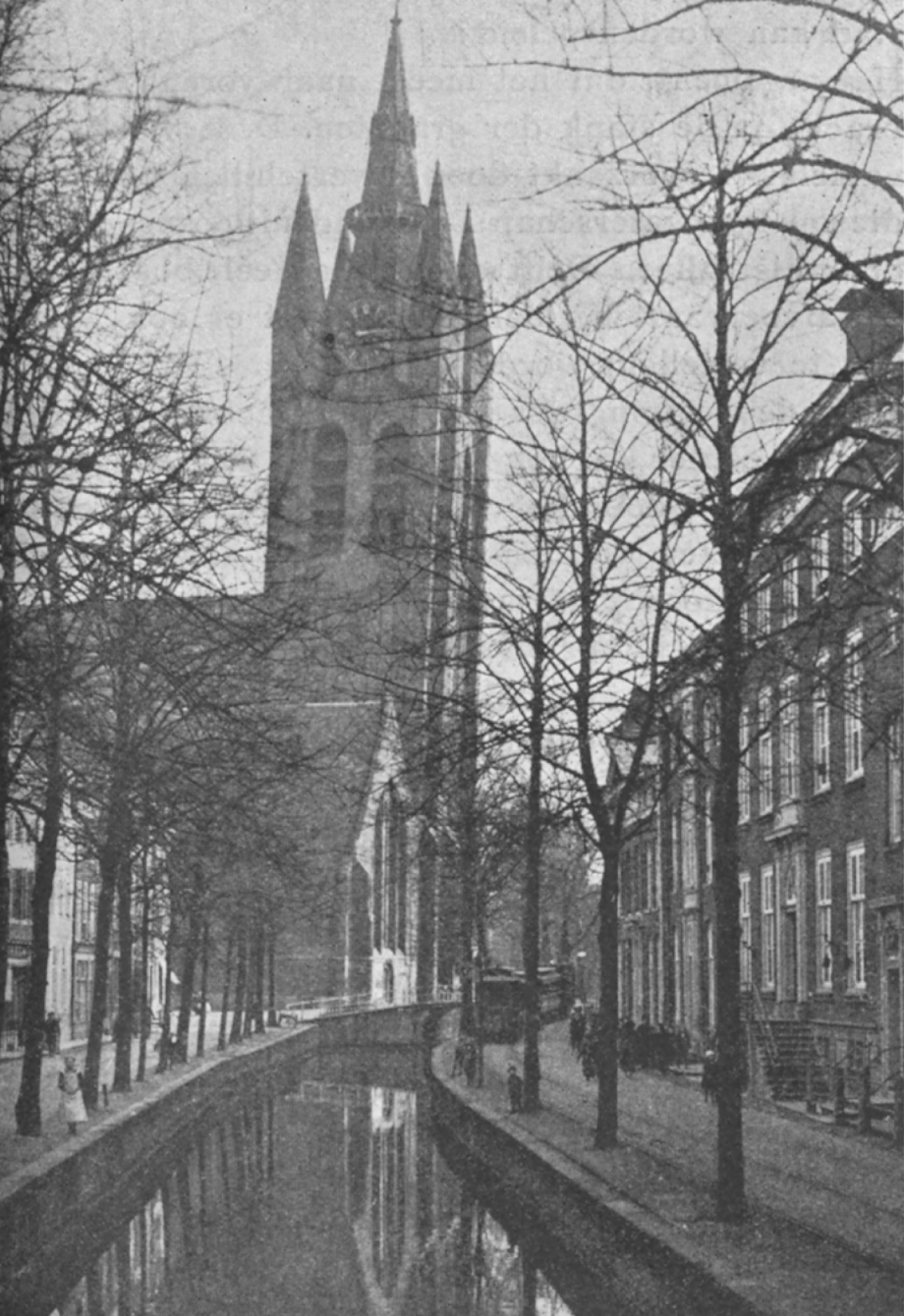








Niets veranderd?



*Oude Delft, Delft (ZH), 1919*



*Bouwblokziekte, Amsterdam (NH), 1940*

















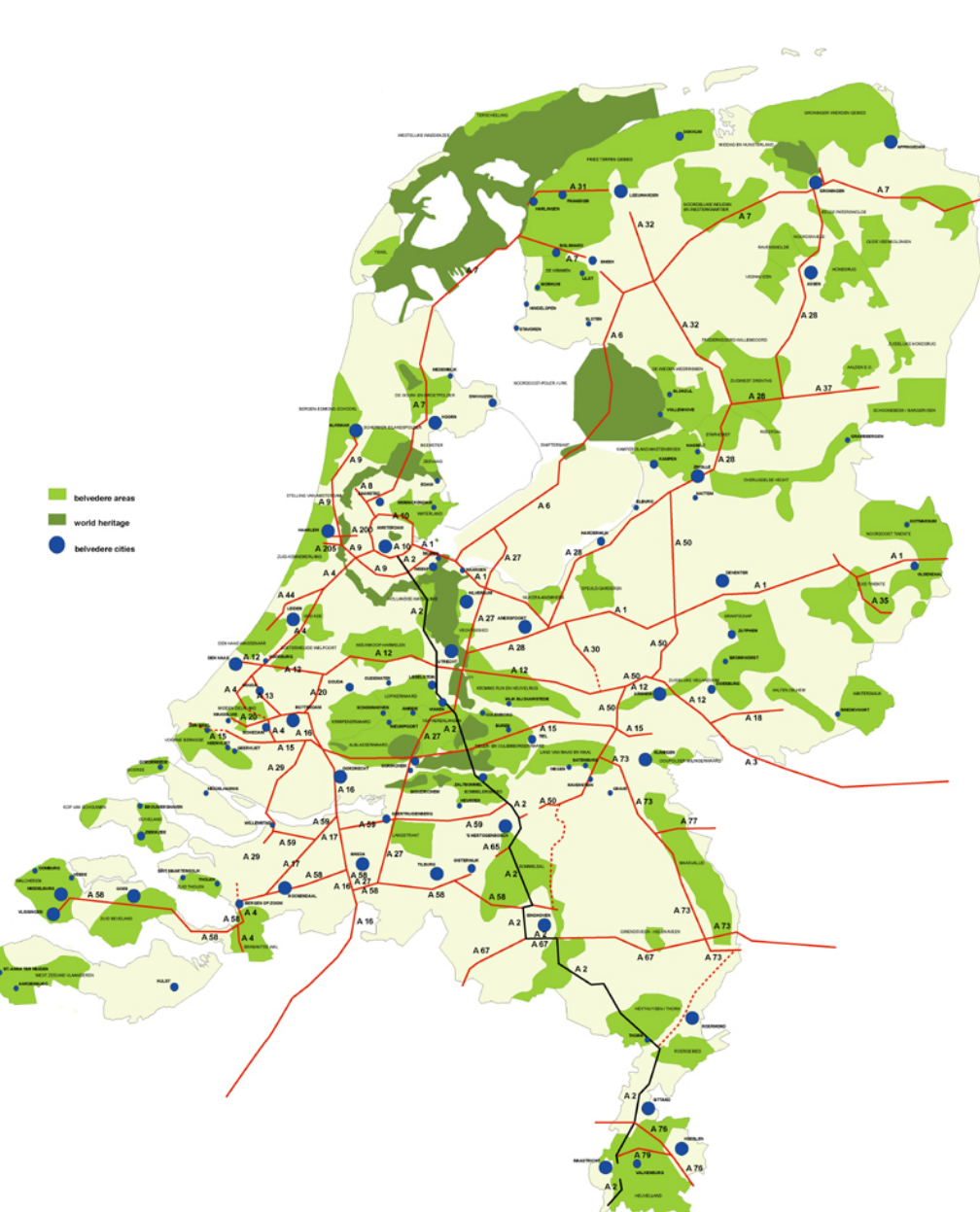
# Modern met traditie











## Erfgoed:

6 World Heritage Sites  
 60.000 rijksmonumenten  
 400 stadsgezichten  
 20 nationale landschappen

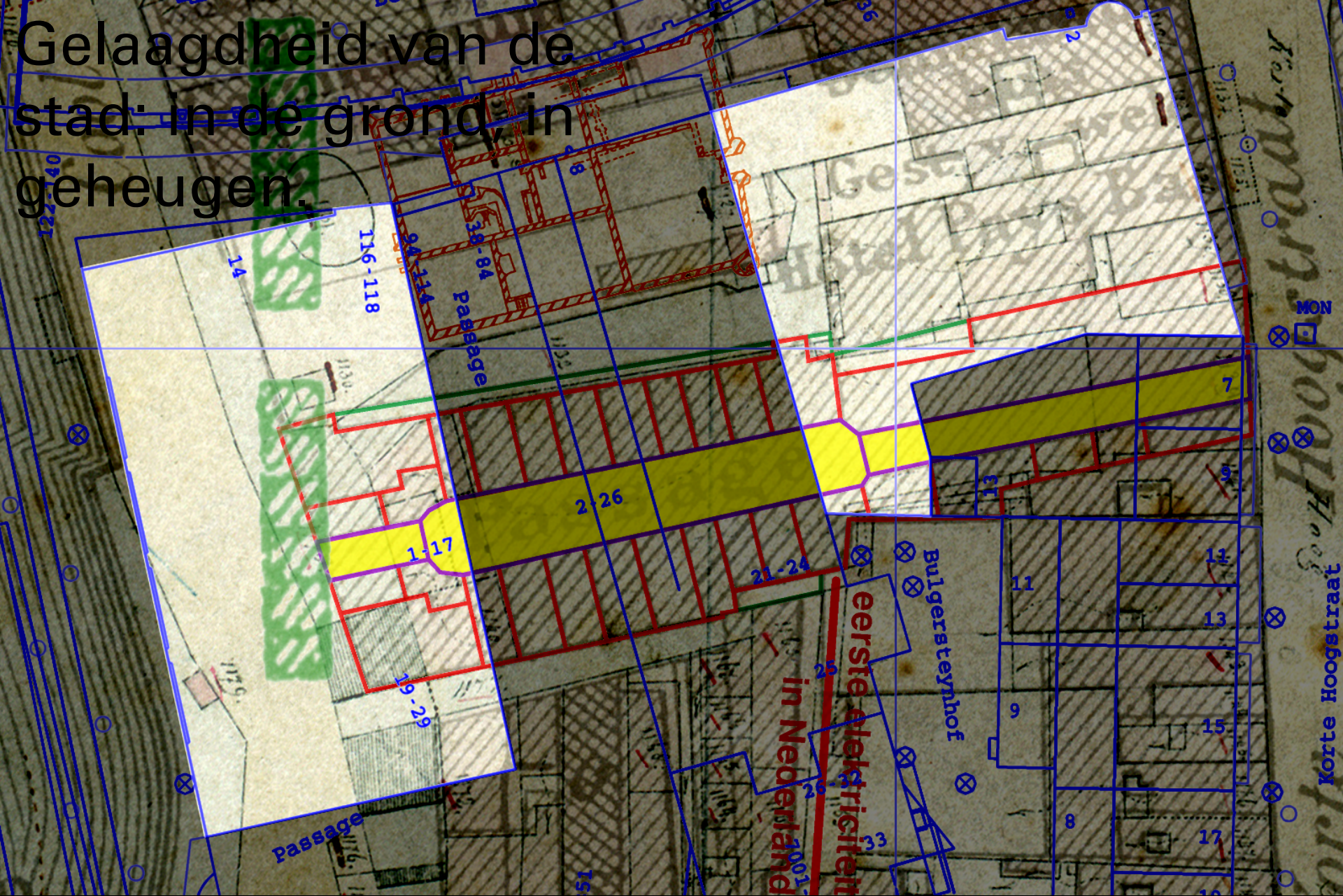
2000 provinciale  
 30.000 gemeentelijk  
 1470 archeologische sites

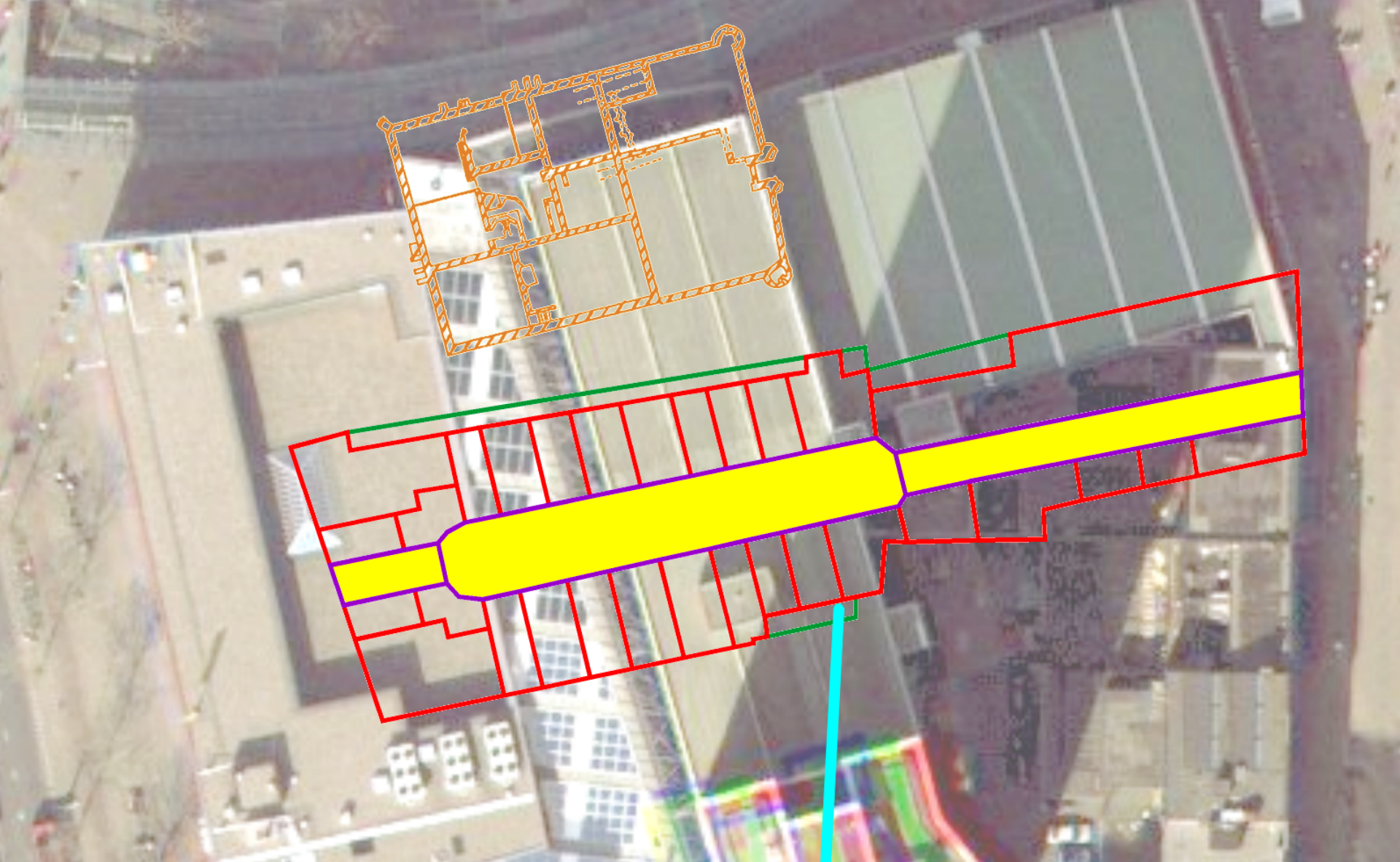
MIP 1850-1940: 165.000  
 objecten & 650 sites



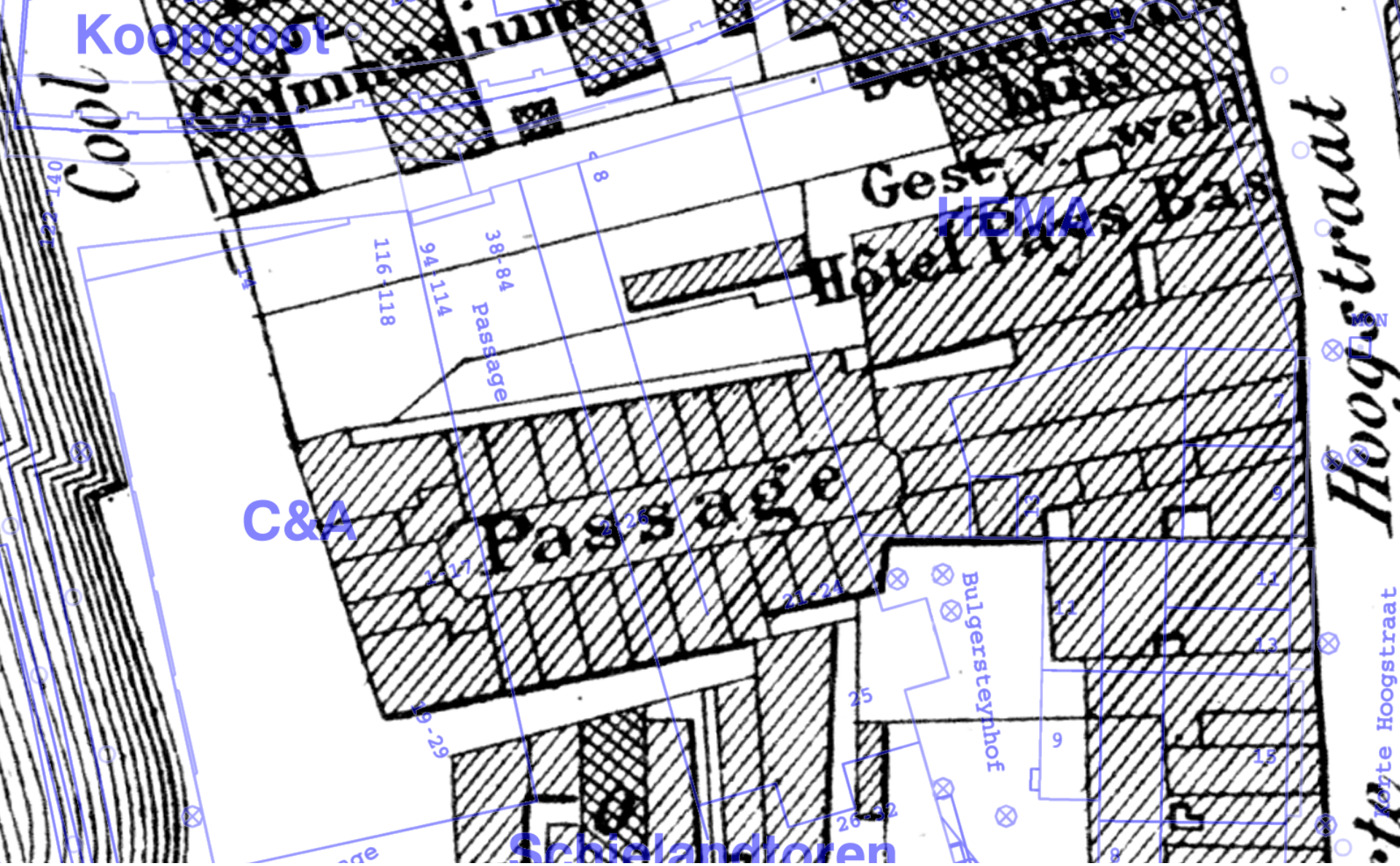


Gelaagdheid van de stad: in de grond, in geheugen.

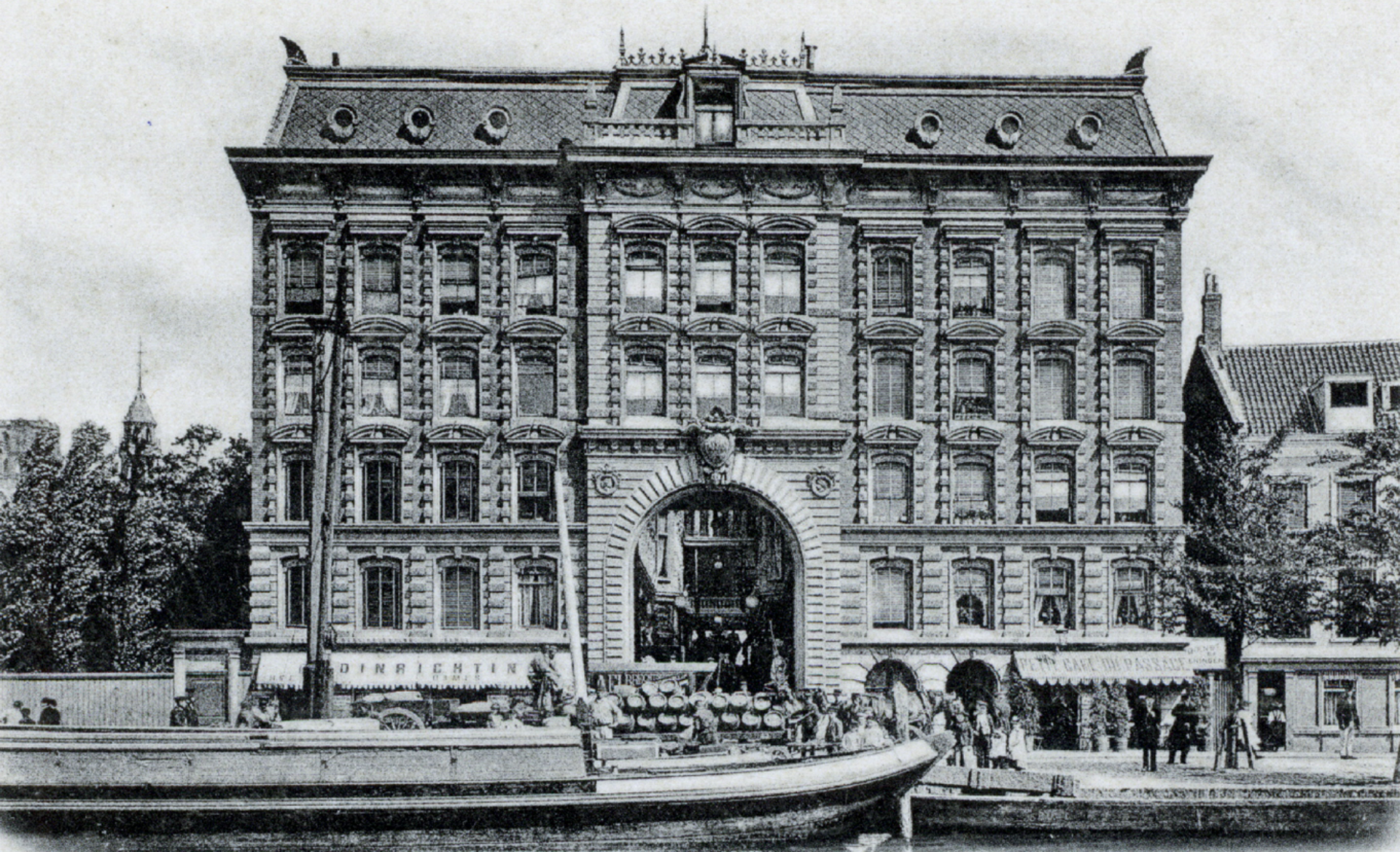




een luchtfoto, plus Bulgersteyn, Passage en kabel



1886, eerste gemeentelijk vervaardigde kaart



# de achtergevel (!) van de Passage

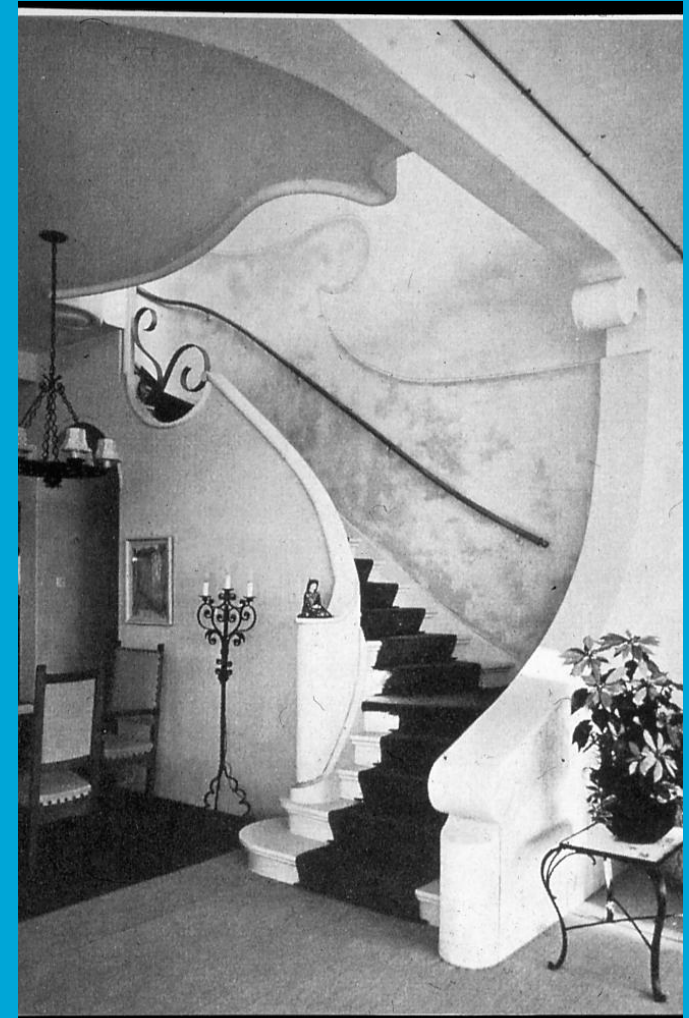








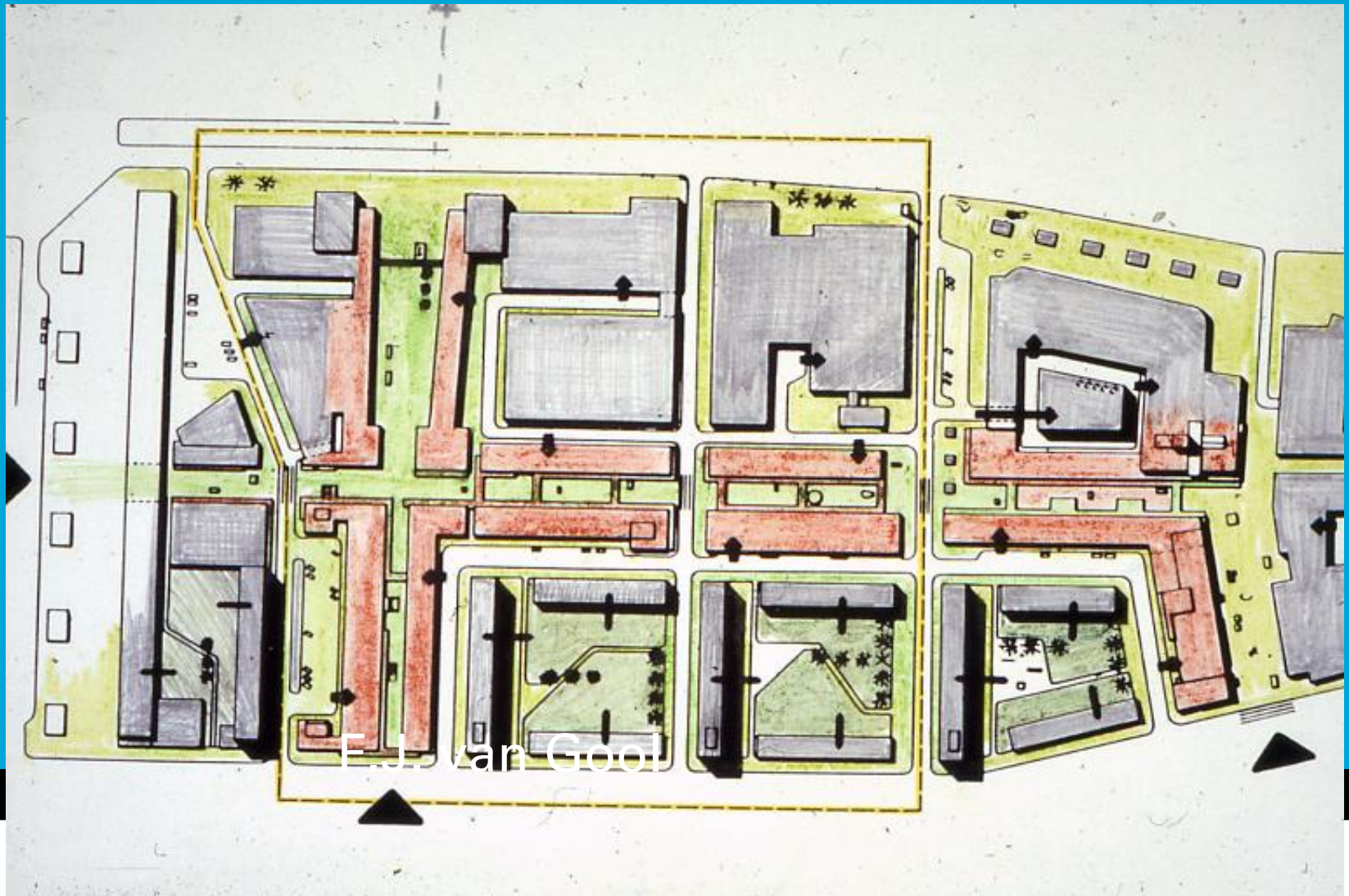
# Goudse Singel



^ Magazijn Eckhardt,  
Van Ravesteyn,  
Dijkzigt.

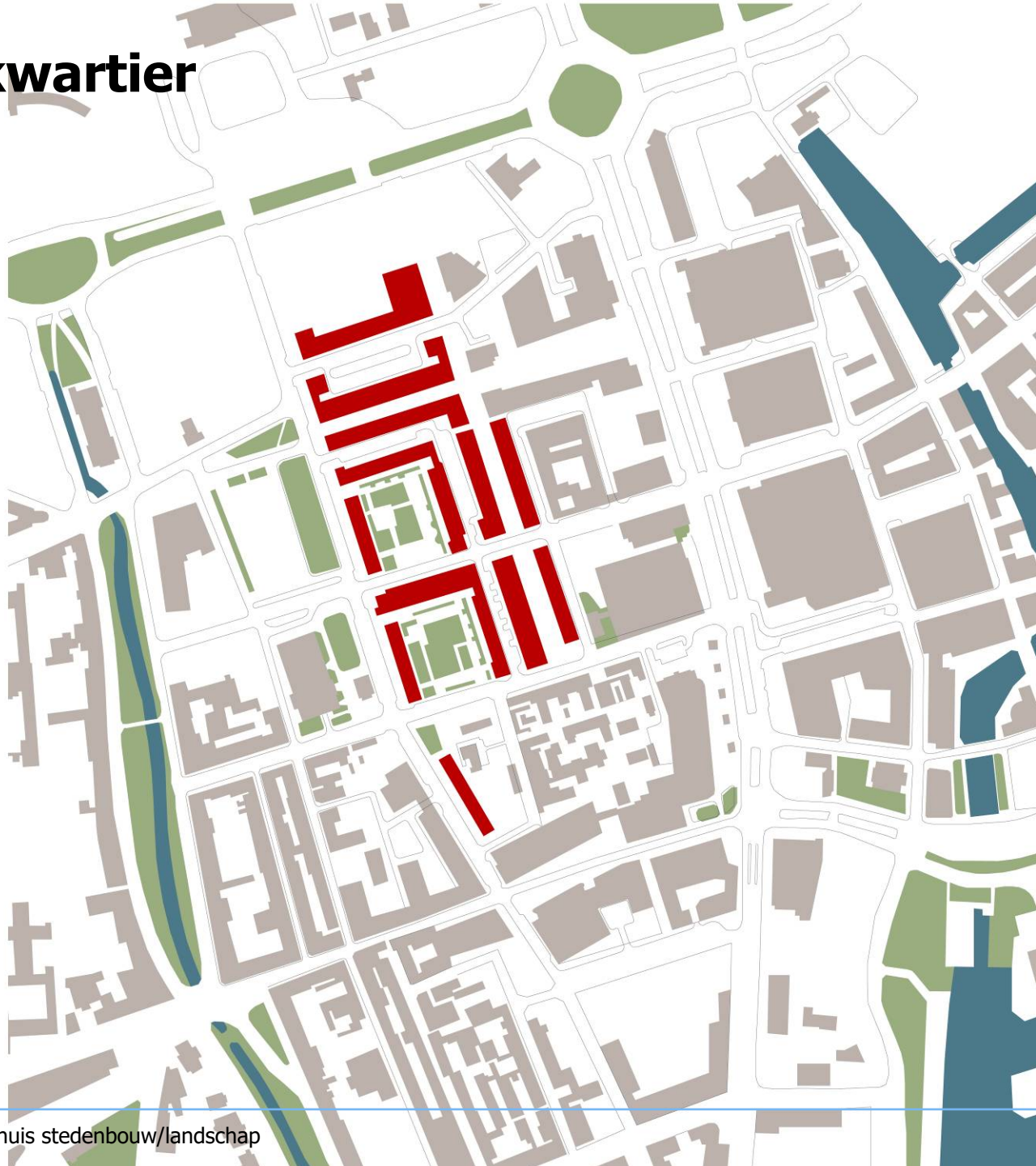
< noodwinkels Dijkzigt;  
**TU Delft**

# De Lijnbaan Van den Broek en Bakema 1951-'53; 1962-'66.



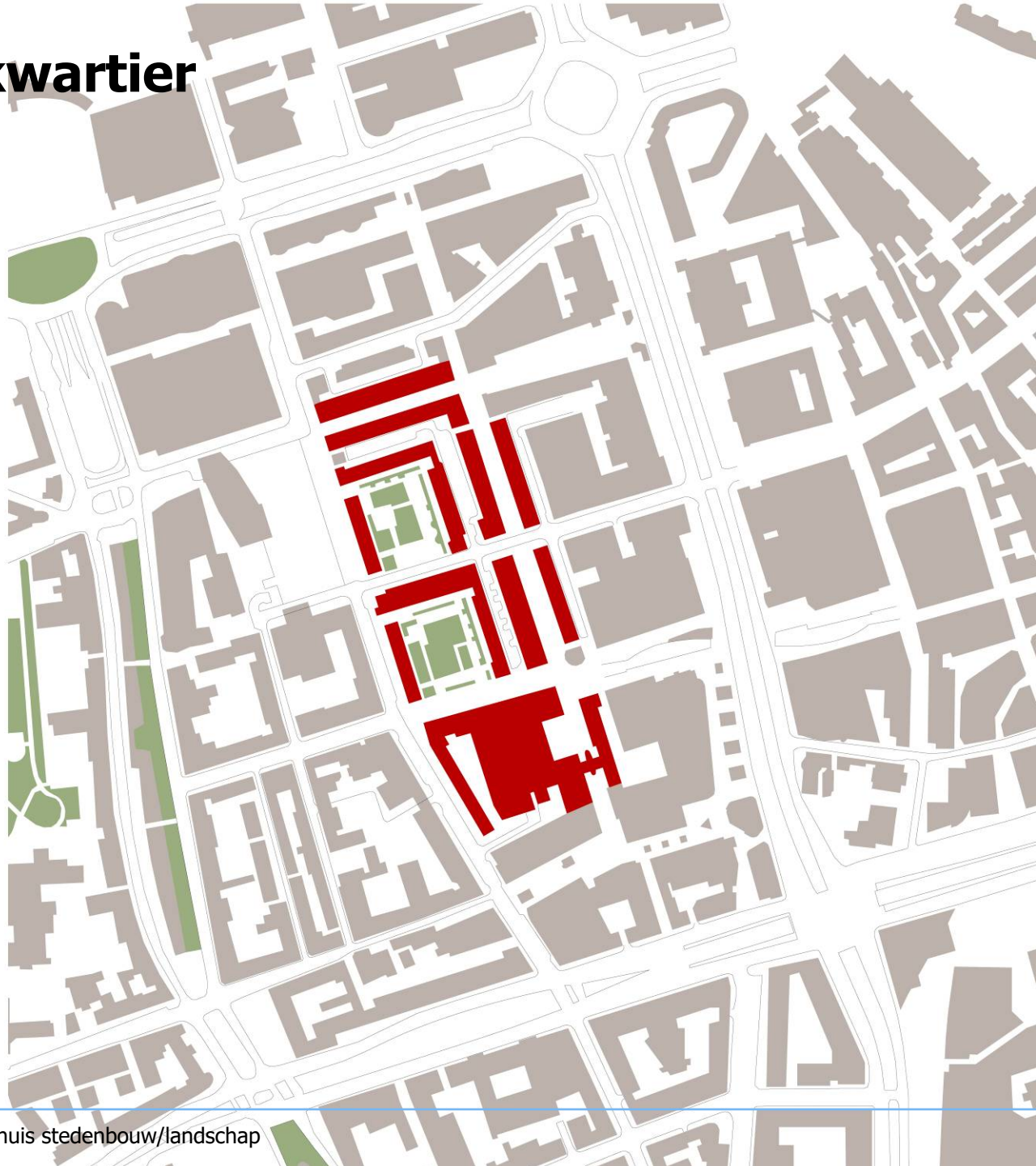
# Lijnbaankwartier

1957



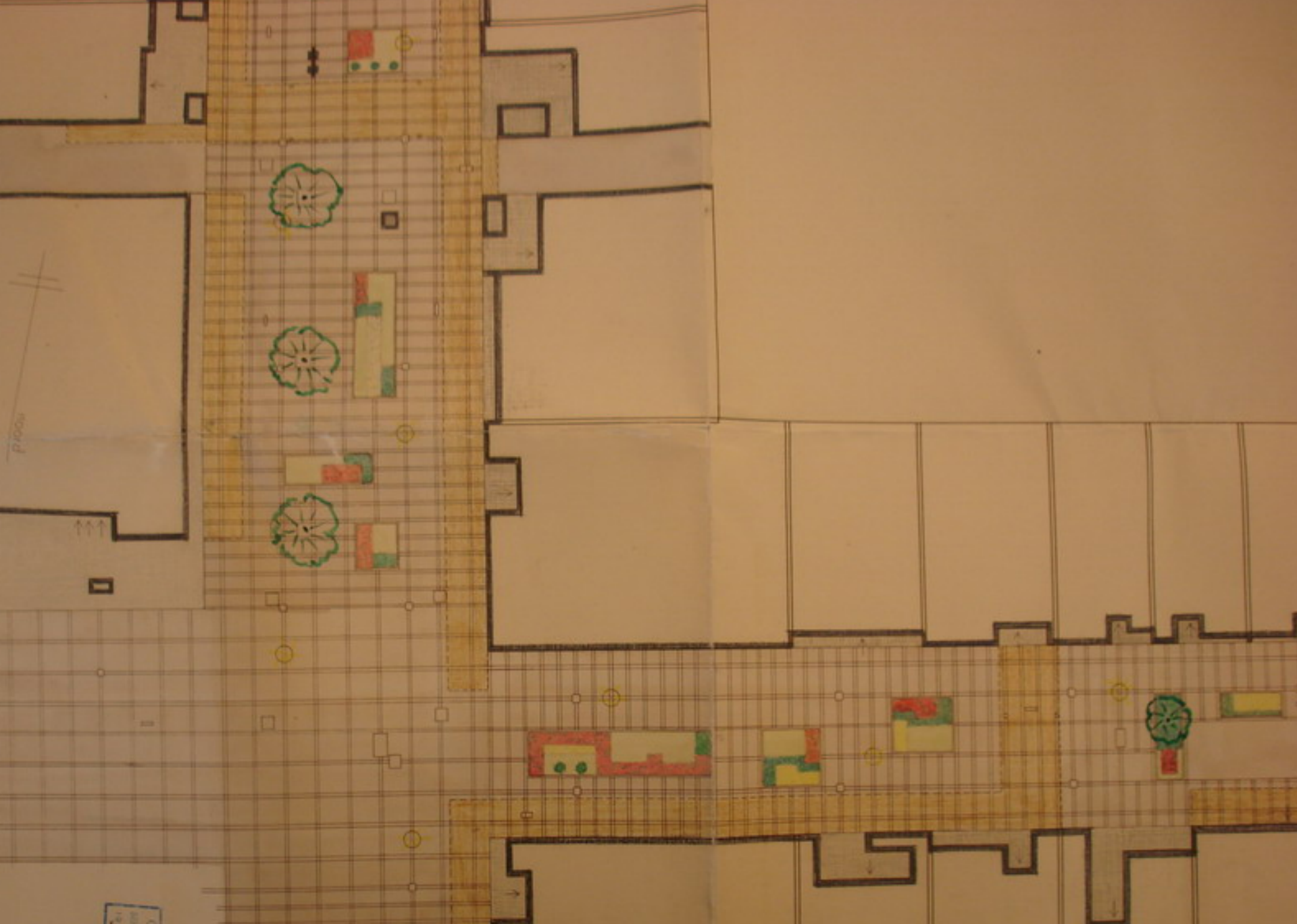
# Lijnbaankwartier

2007



# INRICHTING LIJNBAAN











## De Lijnbaan opening



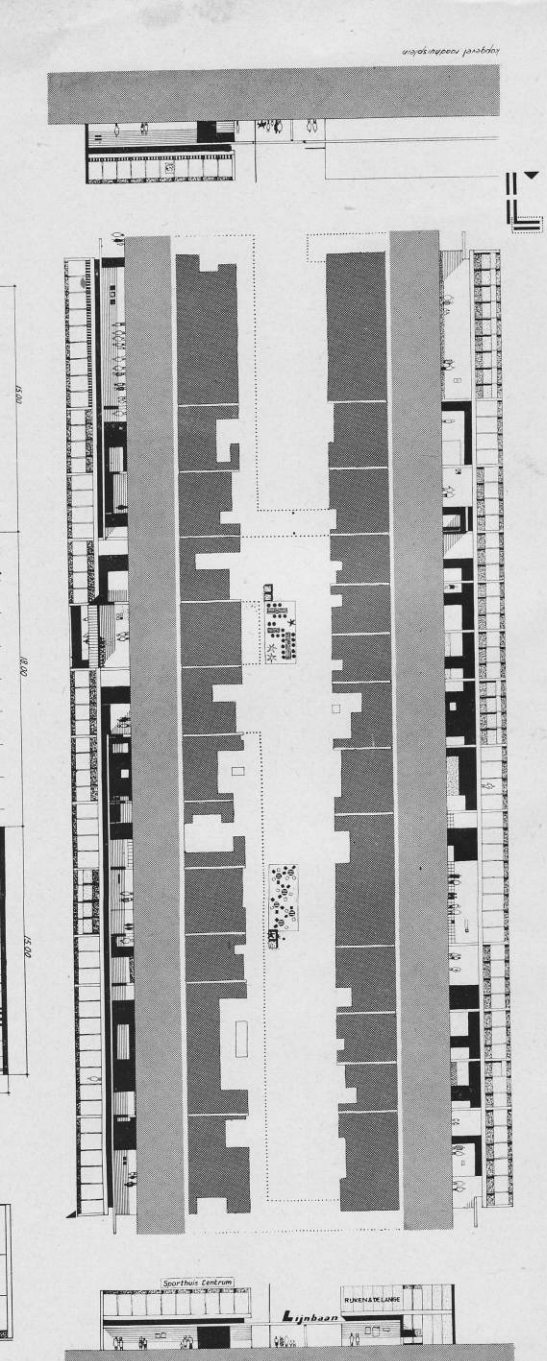
# H.A. Maaskant 1954-'58



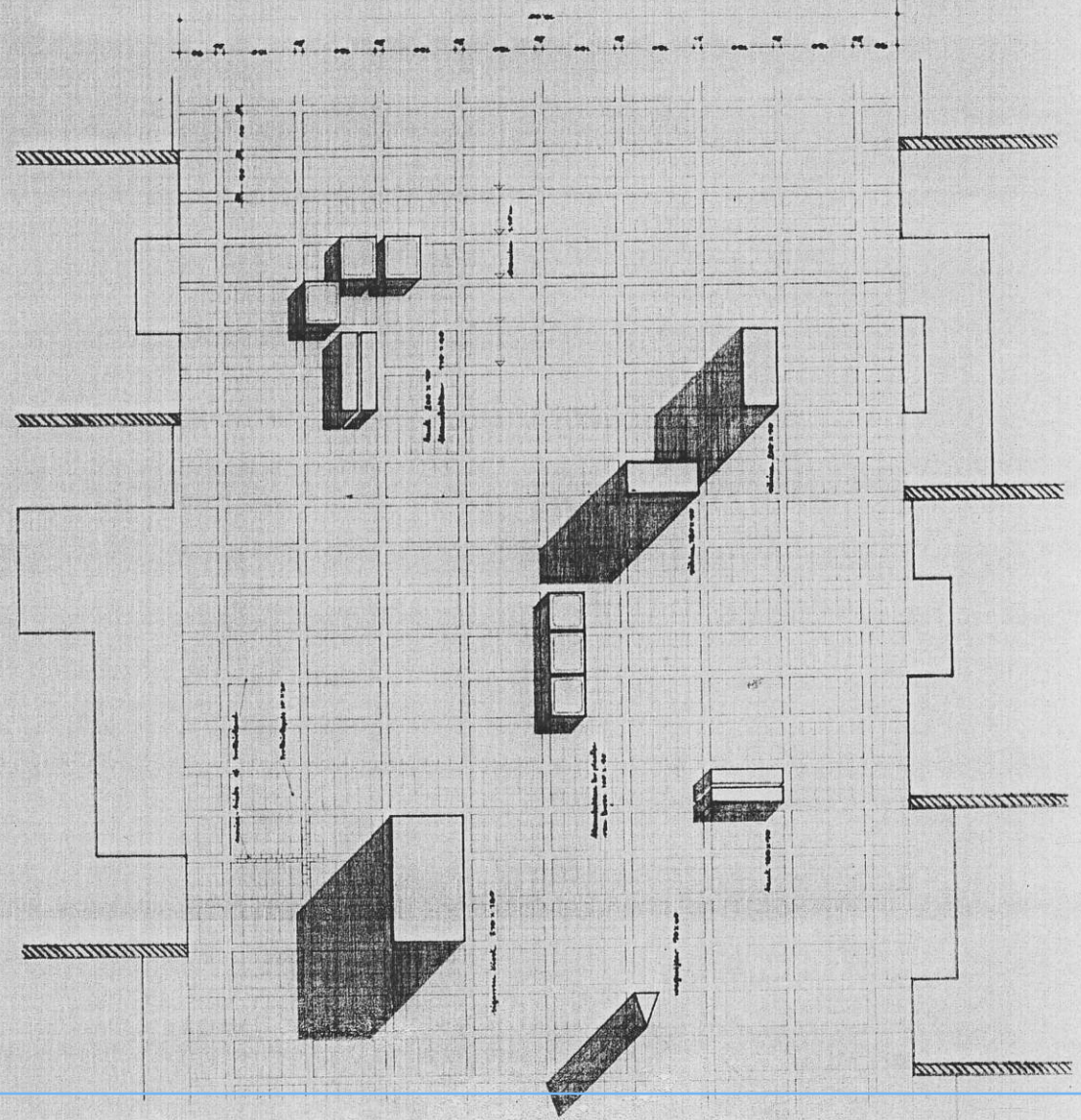
# H.D. Bakker

Ter Meulen, Van den Broek en Bakema, 1948 – '51;  
verbouwd 1960; 1987; 1994 etc.



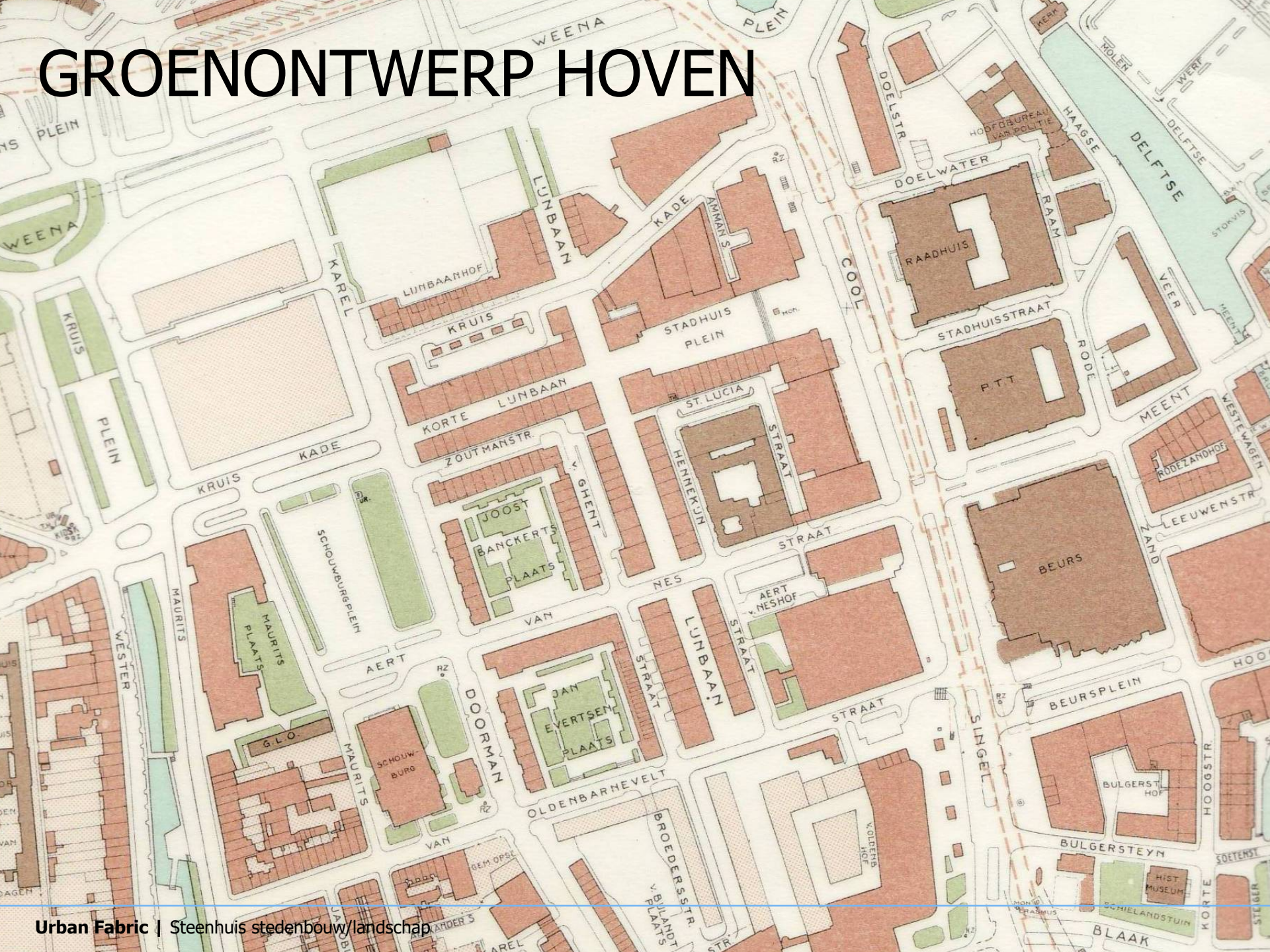


# HORIZONTALAAL MAATSYSTEEM 1,10 M.



voordr. bestraling werkafgesloten lijnbaan  
 VAN DEN BROEK & BAKEMA ARCHITECTEN  
 19532  
 1973-1-25  
 1:50

# GROENONTWERP HOVEN



1958







**KENNISCENTRUM**  
**Urban Fabric | Steenwijk studentbouw | Landschap**

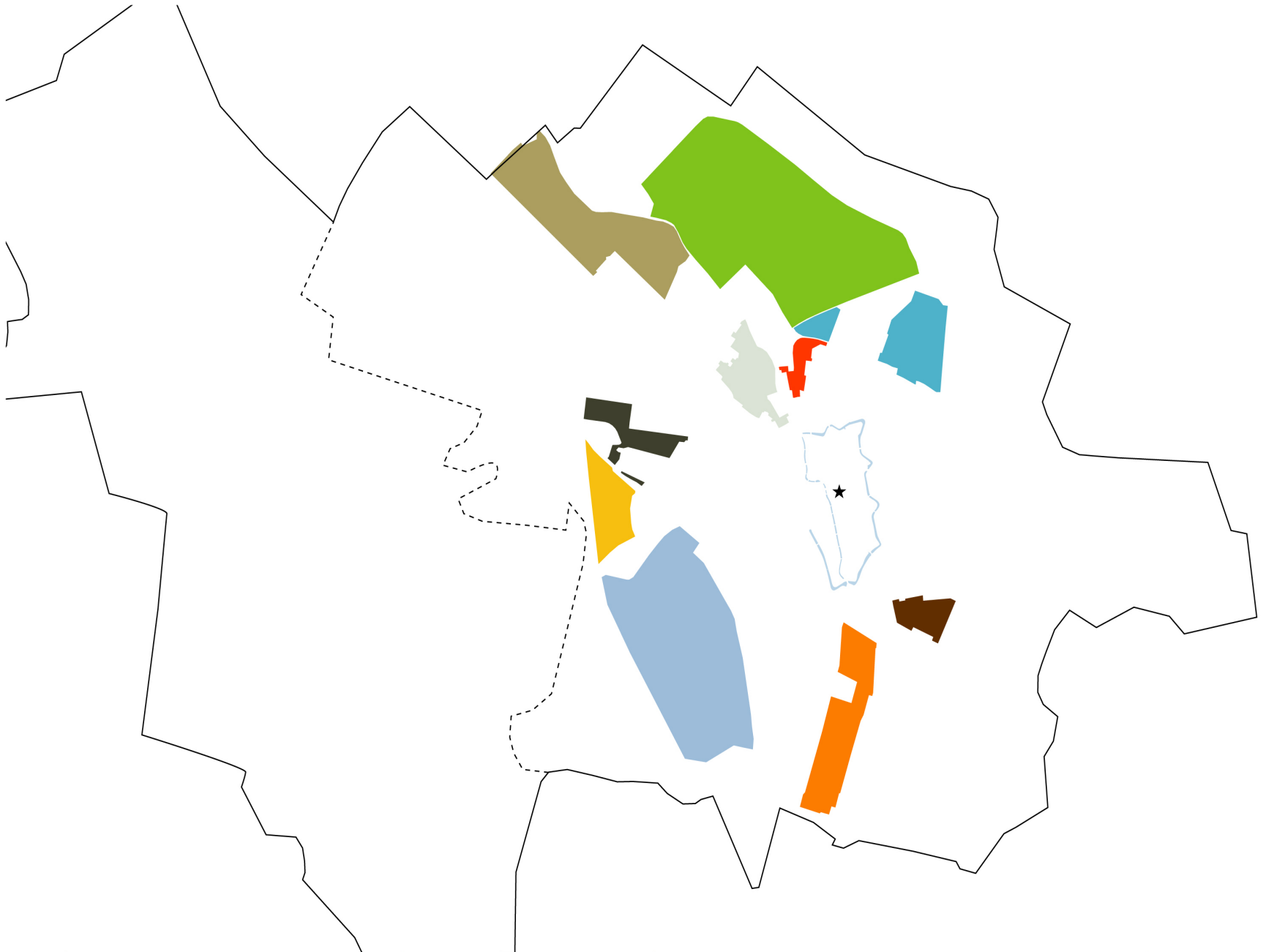
1964



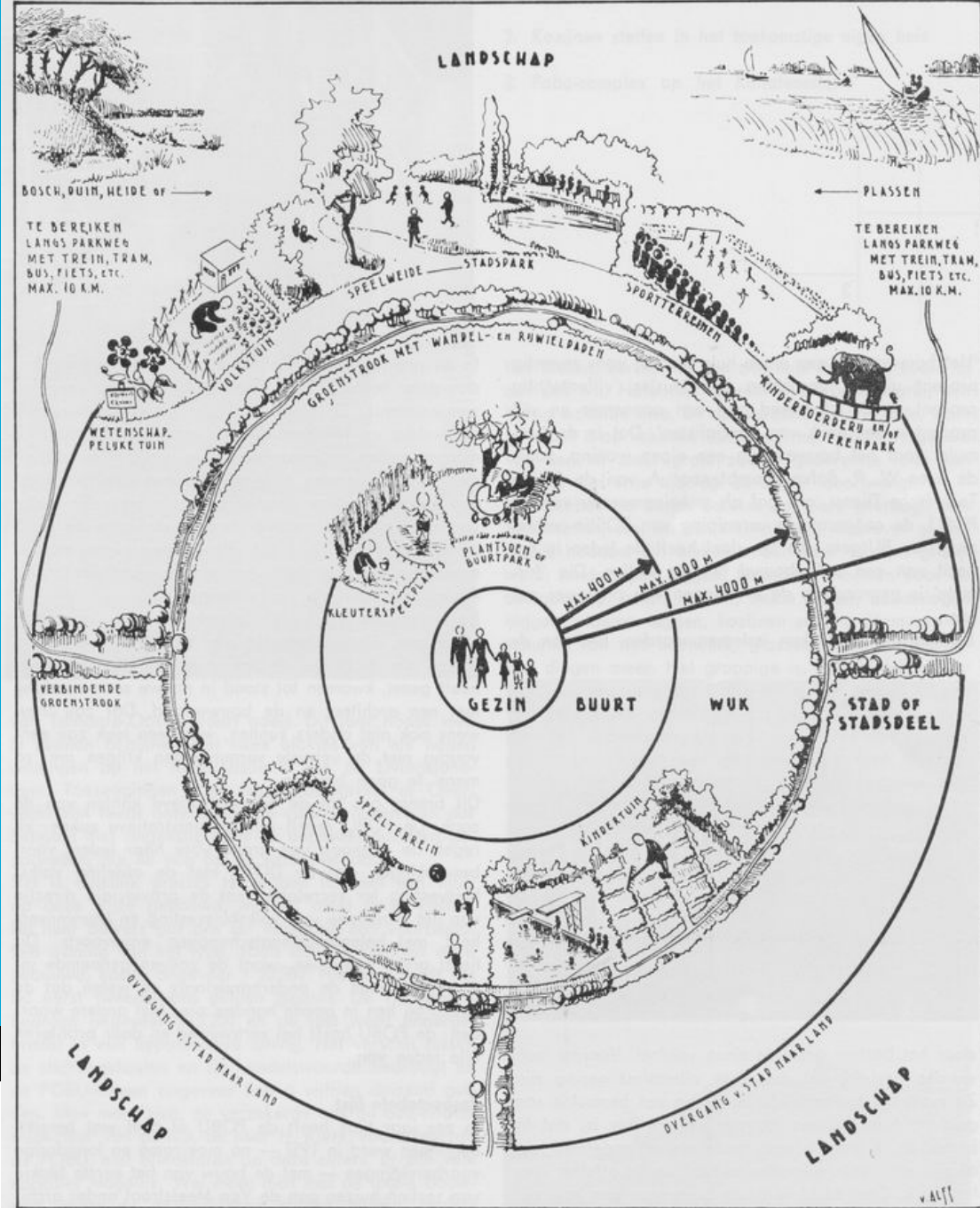




L: Talmalaan, Utrecht



# STEDELIJKE GROENVOORZIENING SCHEMA VOOR STEDEN MET MEER DAN 80-100.000 INW.





KANALENELLAND

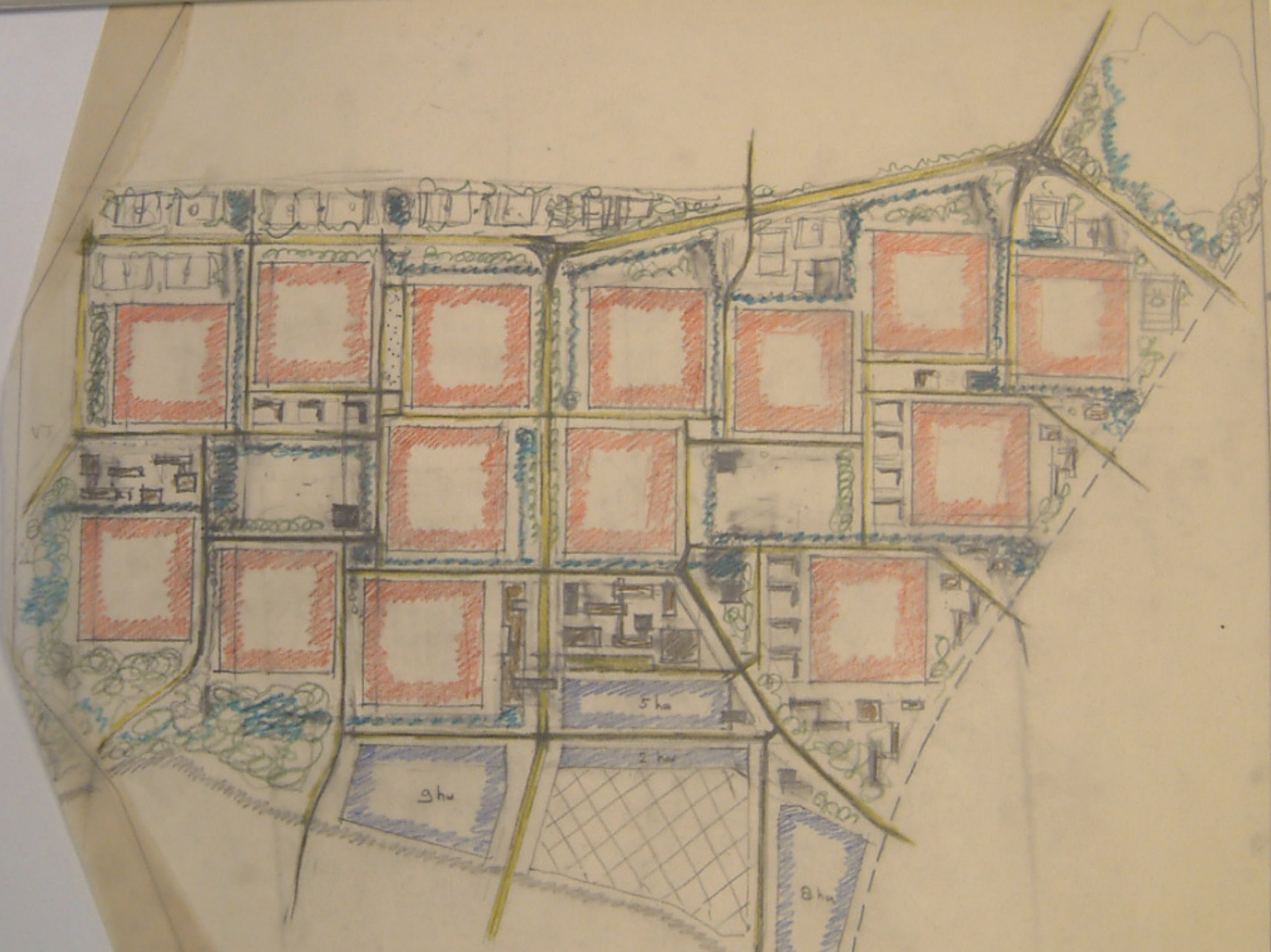
7500 WONINGEN





# OVERVECHT



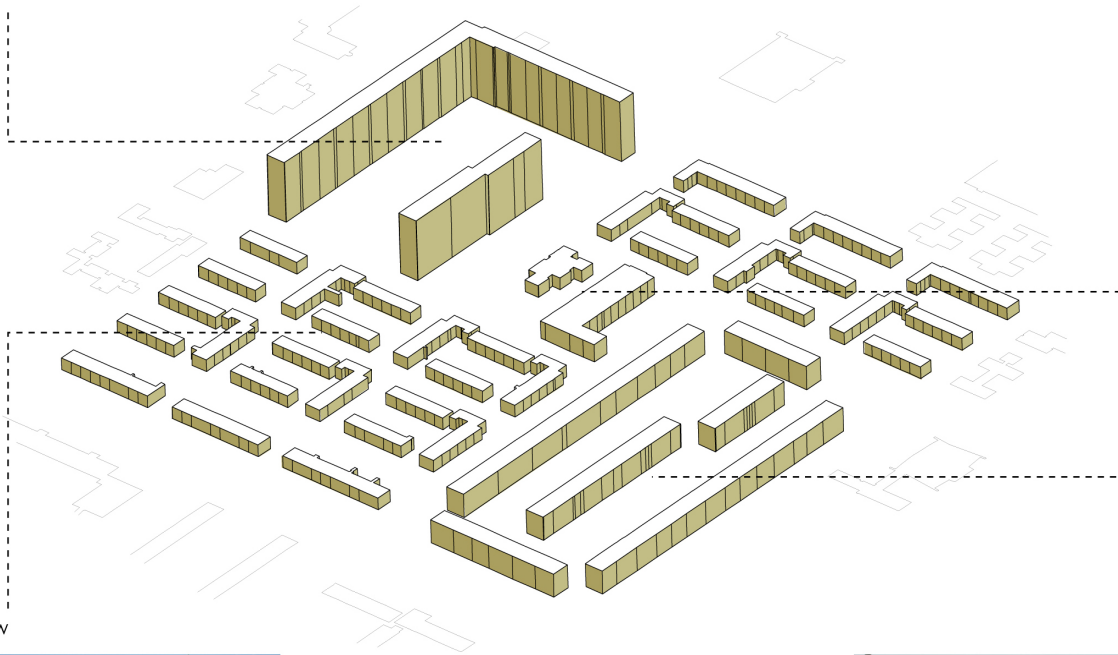




h o o g b o u w



bijzondere bebouwing



l a a g b o u w

middelhoogbouw









# INRICHTING LIJNBAAN











**ZWILLING**  
J.A.HENCKELS SOLINGEN

München  
Berlin  
Düsseldorf  
Frankfurt



ZWILLING J.A.HENCKELS



NOKIA

NOKIA

NOKIA





AVENUE

I.L.Y.W.

BURGER KING

BURGER KING

Candy Candy Candy

Van Gils  
WENNERS

# Nominations Top 100: monuments of post-war reconstruction 1940-1958

- Lijnbaan courts (Maaskant/Bakker/Krijgsman) 1949-1953
- Bijenkorf department store with sculpture (Breuer/Elzas/Gabo) 1957
- Lijnbaan shops (Van den Broek/Bakema) 1956

# DE LIJNBANHOVEN

10 JULI 2008

