



Delft University of Technology

Atlas

Kuijper, Joran

Publication date

2019

Document Version

Final published version

Published in

Atlas: Performative Spaces in Dutch Public Libraries

Citation (APA)

Kuijper, J. (2019). Atlas. In O. Caso, & J. Kuijper (Eds.), *Atlas: Performative Spaces in Dutch Public Libraries* (pp. 42-107). TU Delft OPEN.

Important note

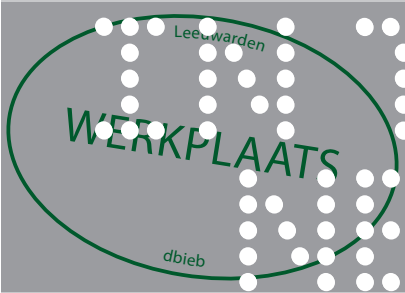
To cite this publication, please use the final published version (if applicable).
Please check the document version above.

Copyright

Other than for strictly personal use, it is not permitted to download, forward or distribute the text or part of it, without the consent of the author(s) and/or copyright holder(s), unless the work is under an open content license such as Creative Commons.

Takedown policy

Please contact us and provide details if you believe this document breaches copyrights.
We will remove access to the work immediately and investigate your claim.



ATLAS
MAKERSPACES
IN
PUBLIC LIBRARIES
IN THE NETHERLANDS

ATLAS

MAKERSPACES
IN PUBLIC
LIBRARIES
IN THE
NETHERLANDS

Colophon

This publication makes part of the research project *Performative Spaces in Dutch Public Libraries. Stepping Stones of Inclusive Innovation* made possible by a grant of the NWO KIEM program Creative Industries CLICKNL. The National Library of The Netherlands actively collaborated with the TU Delft in this investigation.

© 2019 the authors and the Faculty of Architecture and the Built Environment, Delft University of Technology. All rights reserved.

<i>Atlas: Makerspaces in Public Libraries in The Netherlands</i>	dr. Olindo Caso ir. Joran Kuijper
scientific committee	dr. H. Jochumsen, University of Copenhagen (DK); dr. R. Cavallo, TU Delft (NL); dr. S. Evjen, Oslo Metropolitan University (NOR); dr. N. Marzot, University of Ferrara (I); dr. Olindo Caso, TU Delft (NL); dr. N.E. Akin, Beykent University Istanbul (TUR).
published by	TU Delft Open, Faculty of Architecture and the Built Environment, Delft University of Technology
ISBN	978-94-6366-147-8
graphic design	Michael Tjia (tjijia)



Table of Contents	5
Preface / <i>M. Hermans, KB</i>	6
The New Public Library as Supportive Environment for the Contemporary Homo Faber / <i>O. Caso</i>	8
The Atlas: Introduction / <i>O. Caso, J.A. Kuijper</i>	30
Atlas / <i>J.A. Kuijper</i>	42
● Tilburg	44
● Veenendaal	48
● Breda	52
● Eindhoven	56
● Middelburg	60
● Apeldoorn	64
● Utrecht	68
● Leeuwarden	72
● Zwolle	76
● Steenwijk	80
● 's-Gravenzande	84
● Amsterdam Reigersbos	88
● Amsterdam Sloterveer	92
● Amsterdam Waterlandplein	96
● Tiel	100
Spatial Configurations Summary Tables	104
Spatial Characters of Fifteen Library Makerspaces in The Netherlands / <i>O. Caso</i>	108
Summary/Samenvatting	156
Thank you!	158

The Atlas

Joran Kuijper

The following tables show the mapping of the fifteen visited makerspaces. All drawings have been done by Joran Kuijper. The tables move from large to small (scale), typically addressing:

- the scale of the urban area (position and general societal key-data);
- the scale of the hosting (library) building with makerspace's position, along with information about makerspace orientation and floor-space ratio;
- the scale of the makerspace itself, including data on programs / tools, size, and the available square meters per person (capacity);
- the visual dimension of the visited situation, including position in the urban context, the hosting building and the makerspace interiors.

The position of the library in the urban context is shown by the city plan including relevant landmarks as for instance the train station, where possible. The hosting (library) building and the makerspace are represented by comparable isometric drawings. The visual dimension is illustrated by photographs taken at the time of the visits. Each makerspace has been associated to a color in order to render it distinguishable. Color-association has further no other meaning. A summary table of the spatial configurations of (library) buildings and makerspaces conclude the Atlas. The information sources for the mapping have been: A) direct observations and measurements during the visit; and B) materials like building (floor)plans / sections supplied by the makerspace / library staff, if available.

City	Library	Makerspace	
Tilburg	Bibliotheek Tilburg	Digilab	44
Veenendaal	Cultuurfabriek Veenendaal	FabLab Veenendaal	48
Breda	Bibliotheek Nieuwe Veste	Makersbase	52
Eindhoven	Bibliotheek Eindhoven	Microlab Strijp-S, Technieklab	56
Middelburg	ZB Middelburg	FabLab Zeeland	60
Apeldoorn	CODA Bibliotheek	CODA FabLab + CODA VRLab	64
Utrecht	Centrale Bibliotheek	Laboratorium	68
Leeuwarden	dbieb	Werkplaats	72
Zwolle	Stadkamer Centrum	Medialab	76
Steenwijk	Bibliotheek Steenwijk	KennisLab	80
's-Gravenzande	Bibliotheek 's-Gravenzande	BiebLab	84
Amsterdam Reigersbos	OBA Reigersbos	Maakplaats 021	88
Amsterdam Sloterveer	OBA Sloterveer	Maakplaats 021	92
Amsterdam Waterlandplein	OBA Waterlandplein	Maakplaats 021	96
Tiel	Bibliotheek Tiel	Medialab Tiel	100
Spatial Configurations Summary Tables			104



Tilburg

The library is part of a larger office building of the municipality but has its own entrance. In 2019 the library will move close to the train station, as part of the 'spoorzone' urban project.

population 21.552
CBS, 2018

area 119,15km²
CBS, 2018

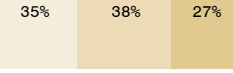
population per km² 1824
CBS, 2017

annual household income € 30.200
CBS, 2014

education level

CBS, 2011

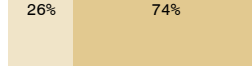
- low educated
- middle educated
- highly educated



background

CBS, 2017

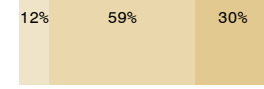
- migration background
- Dutch background



labor sectors

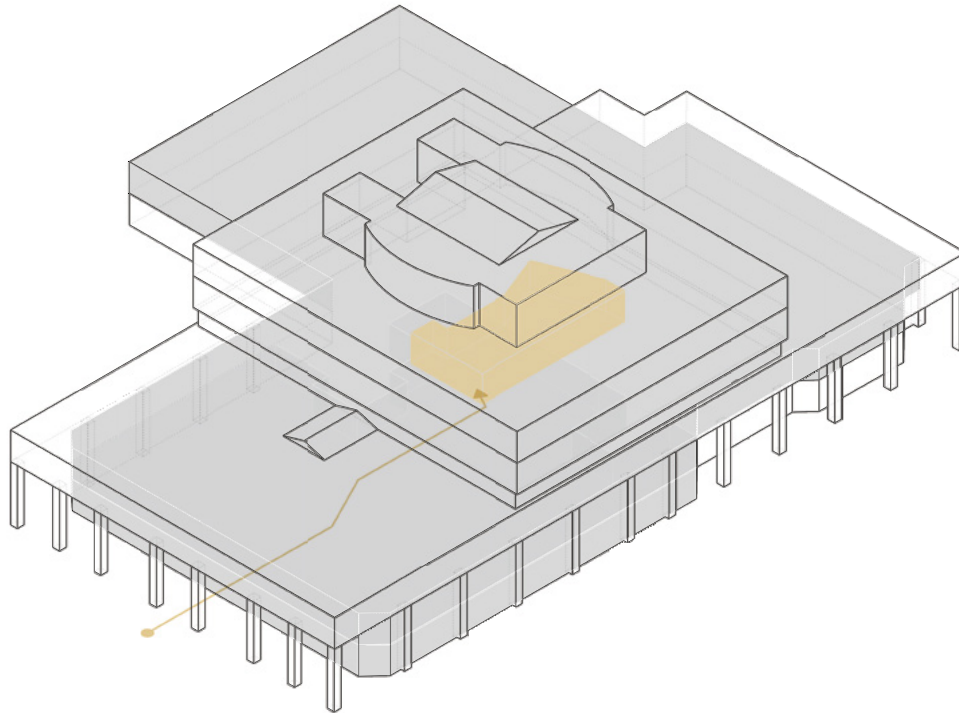
CBS, 2016

- industry and energy
- commercial service
- non-commercial service



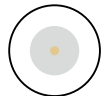
Bibliotheek Tilburg

The makerspace is on the first floor as an open space between the collections. It is in the library often seen by visitors as the information desk and it is the only visited makerspace offering knowledge about open source software and cryptocurrencies.

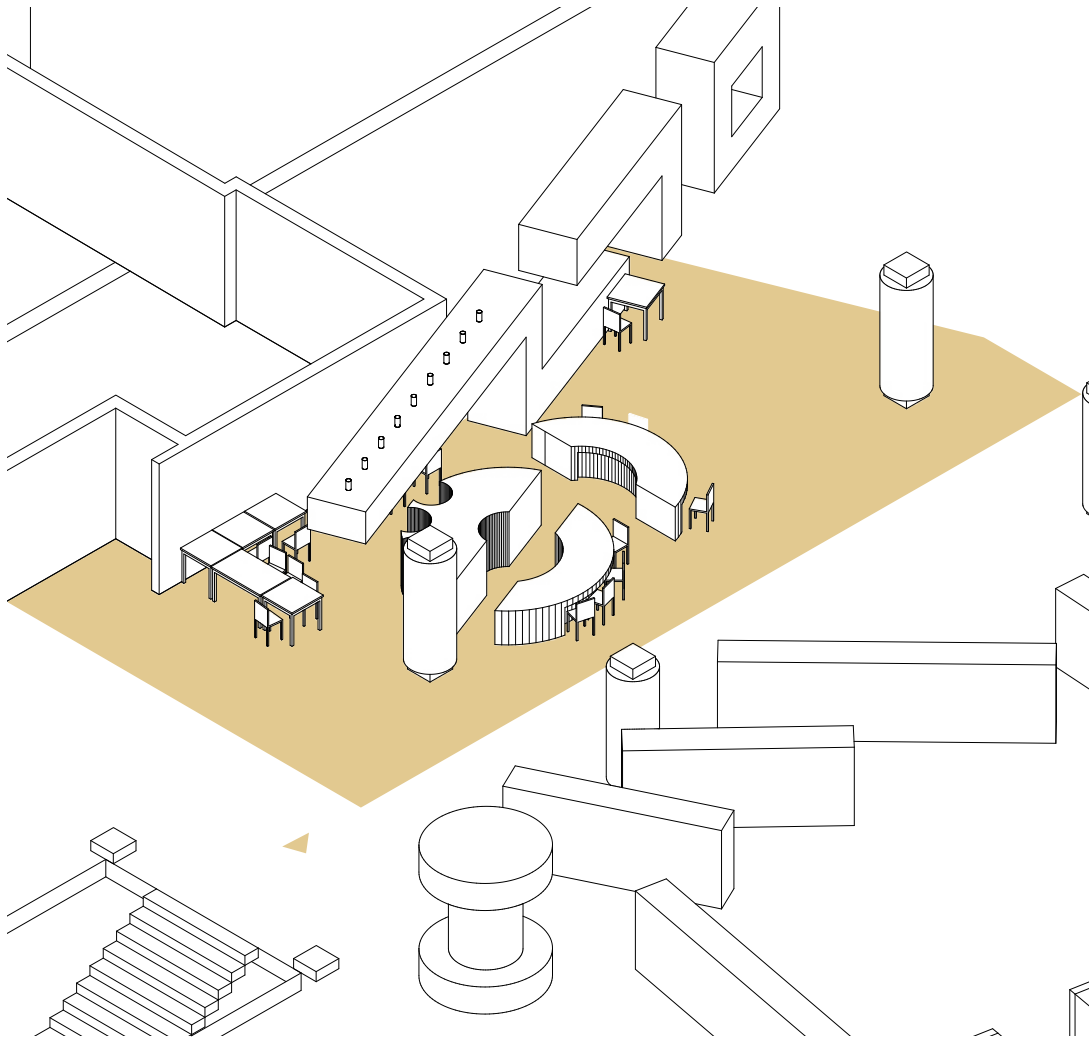


scale	M
space	open plan
arts and crafts	
twenty-first century skills	●
floor area	

- building
- library
- makerspace



15.038 m²
4.451 m²
152 m²



Digilab

The makerspace has its own VR-Lab, but because of the makerspace's open configuration, this takes space from the collections. The (young) users produce quite some noise while using the VR possibilities.

workplaces

12

floor area



● makerspace
○ floor area per person

152 m²
12,7 m²

facilities

cooking and food	●	graphic design	●
creative writing	●	game design	●
virtual reality	●	robotics	●
jewelry	●	3d drawing	●
textiles	●	3d scanning	●
music	●	3d printing	●
art	●	coding dojo	●
audio	●	vinyl cutting	●
video	●	2d laser cutting	●
materials	●	Legó	●
		handicrafts	●

building

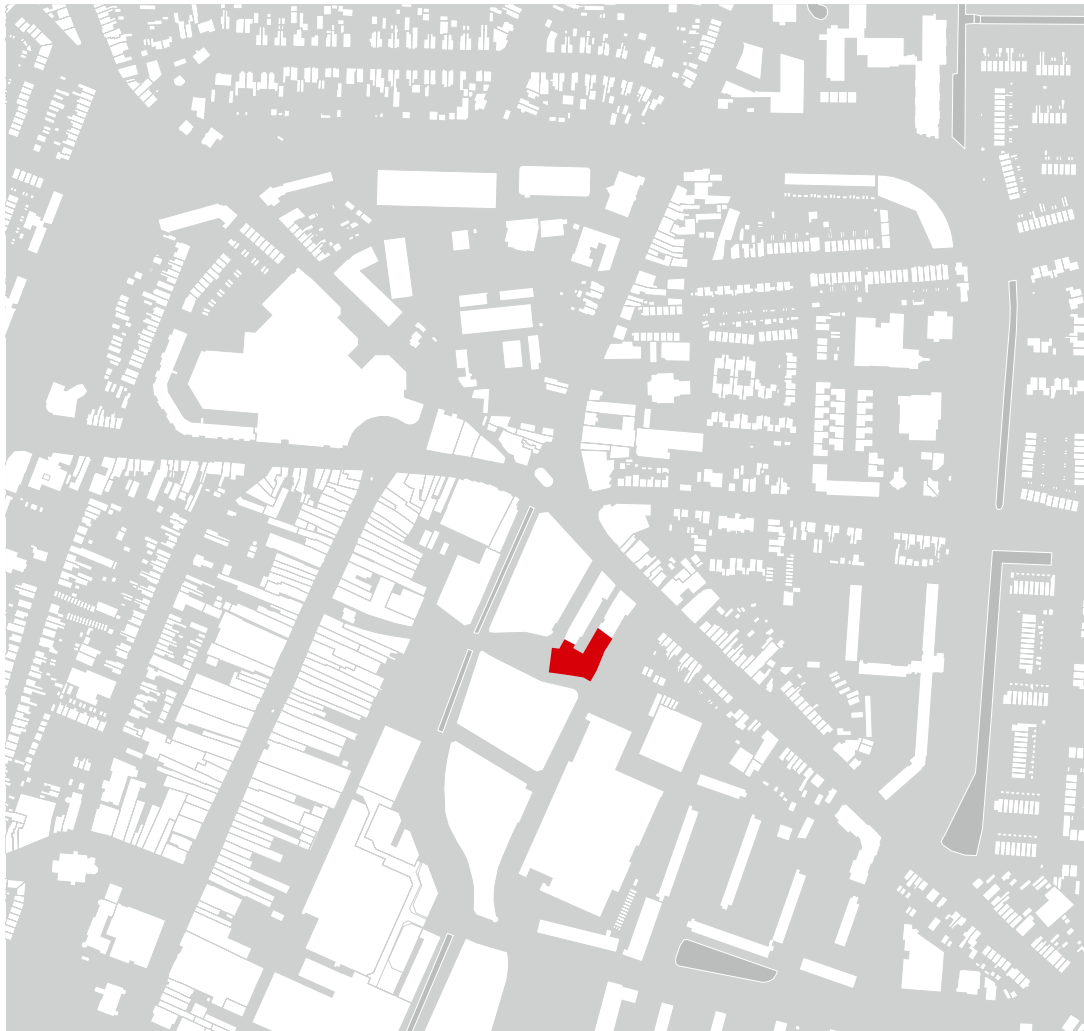


library



makerspace





Veenendaal

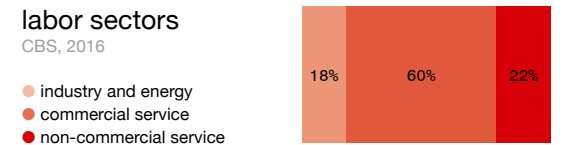
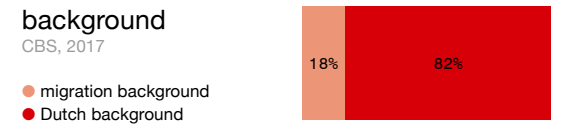
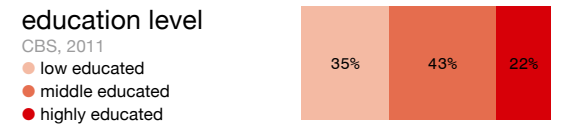
The library is located in the Cultuurfabriek, a cultural center with a local historical association, art loan, the city's museum and a local culture foundation.

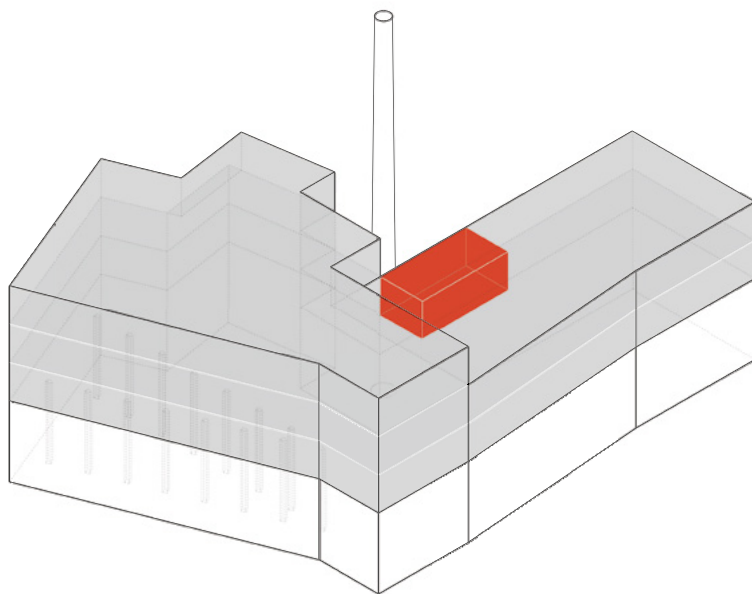
population **64.918**
CBS, 2018

area **19,72 km²**
CBS, 2018

population per km² **3.299**
CBS, 2017


annual household income **€ 31.000**
CBS, 2014





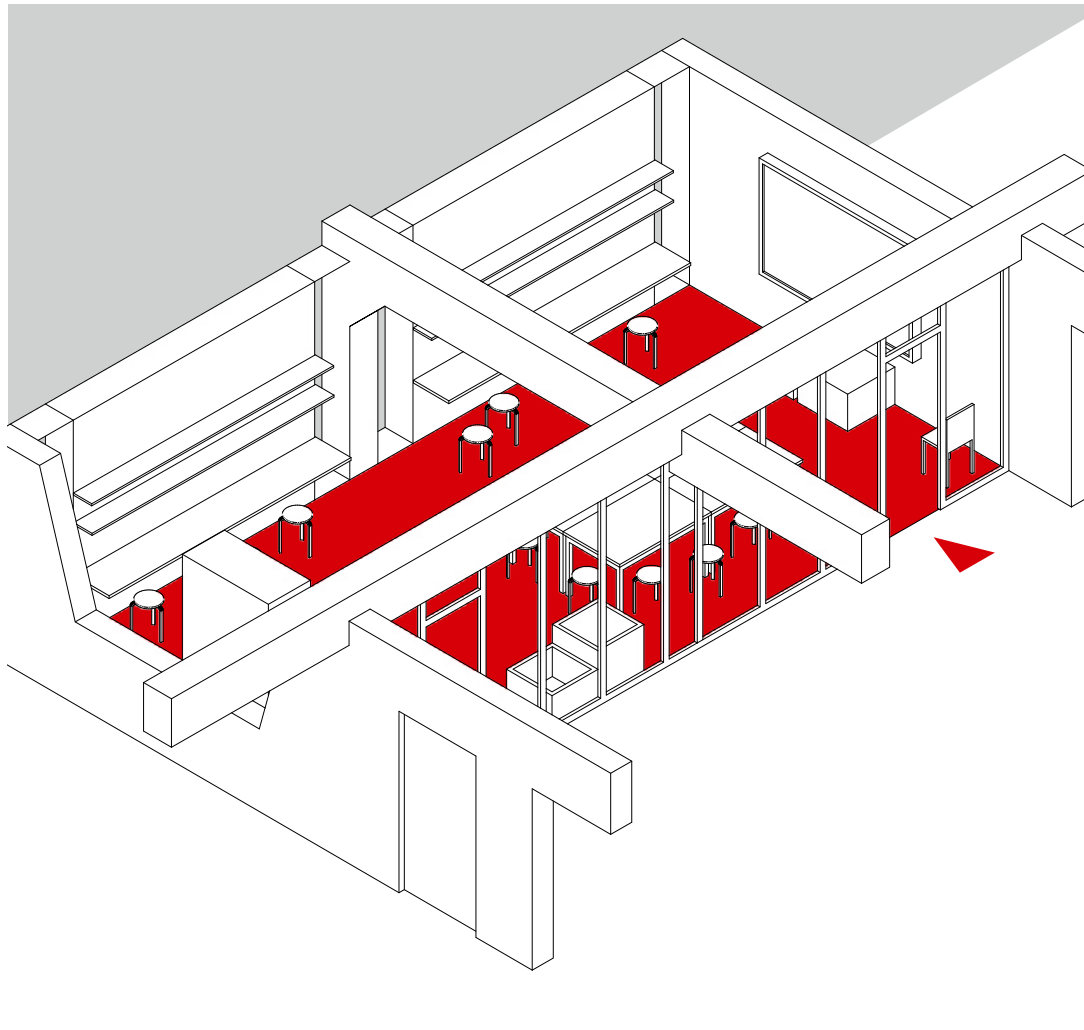
Cultuurfabriek Veenendaal

The first and the second floor of the building is the library. It contains special reading spaces for children and tutor rooms for (external) educational purposes. The makerspace is located in a former silent room wherein a glass front is placed.

scale	M
space	enclosed
arts and crafts	●
twenty-first century skills	●
floor area	
○ building	3.760 m ²
● library	2.706 m ²
● makerspace	42 m ²

FabLab Veenendaal

For a relatively small space lots of equipment is available. Tough, because of its location there is not much of a run-up. Nevertheless the makerspace is recognizable as such because of this transparency.



workplaces

15

floor area



● makerspace

42 m²

○ floor area per person

2,8 m²

facilities

cooking and food	●	graphic design	
creative writing	●	game design	
virtual reality	●	robotics	
jewelery	●	3d drawing	●
textiles	●	3d scanning	
music	●	3d printing	●
art	●	coding dojo	●
audio	●	vinyl cutting	
video	●	2d laser cutting	●
materials	●	Lego	
		handicrafts	●

building

library

makerspace





Breda

Together with a theatre, a music and art school the library is part of a cultural center. The vast collection is spread over two open space floor deepened wings on one level.

population 183.448

CBS, 2018

area 128,68 km²

CBS, 2018

population per km² 1.447

CBS, 2017

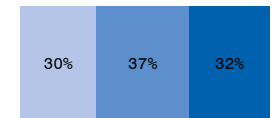
annual household income € 34.600

CBS, 2014

education level

CBS, 2011

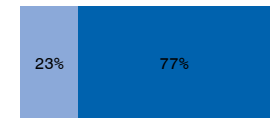
- low educated
- middle educated
- highly educated



background

CBS, 2017

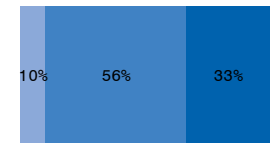
- migration background
- Dutch background



labor sectors

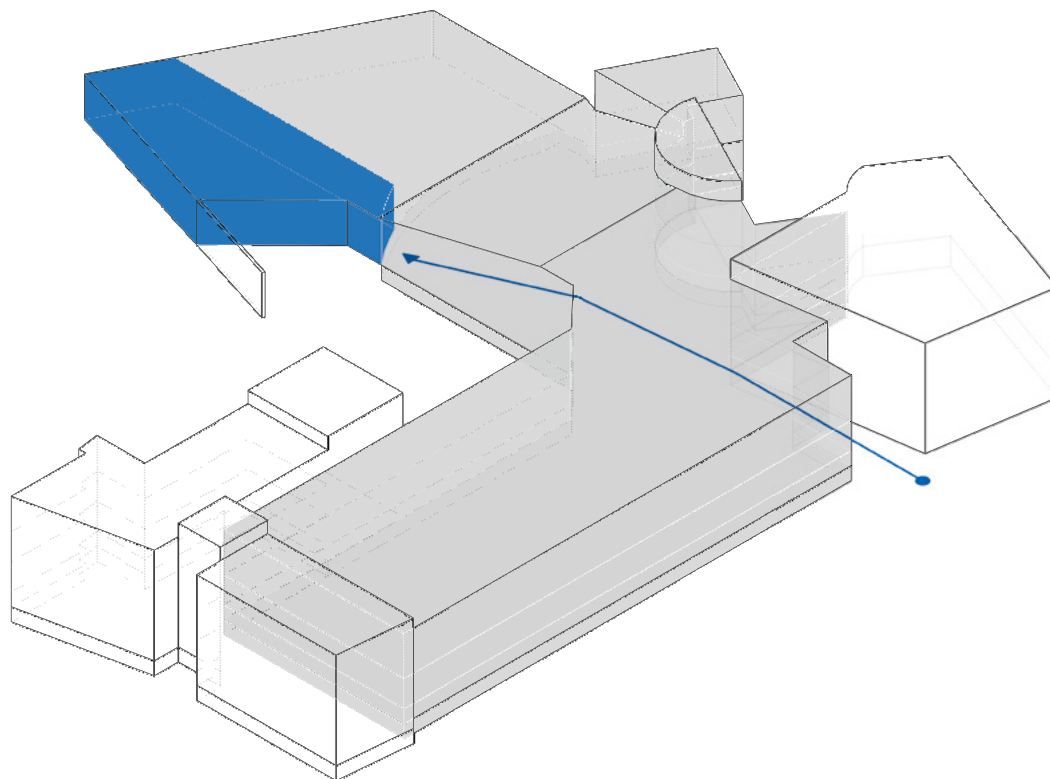
CBS, 2016


- industry and energy
- commercial service
- non-commercial service

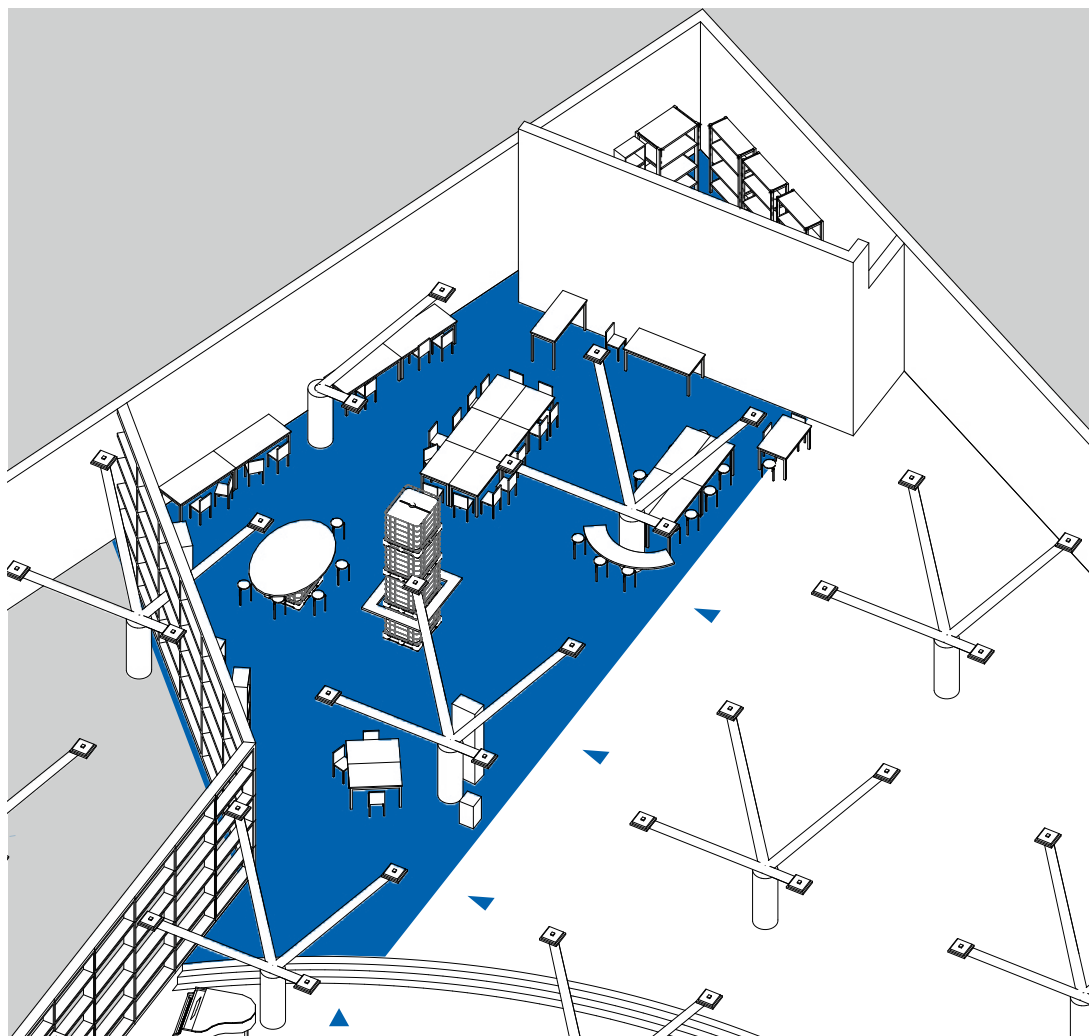


Bibliotheek Nieuwe Veste

The floor of the library is marked with colored tape pointing out the direction to the makerspace which is located as an open space between de collections. Natural light from the indoor enters the library quite well because of the large glass front.



scale	L
space	open plan
arts and crafts	●
twenty-first century skills	●
floor area	
	<ul style="list-style-type: none"> ○ building 6.979 m² ● library 2.514 m² ● makerspace 261 m²



Makersbase

A hired artist created the furniture from reused material accommodating a fresh and 'young' look. Music and video is played during the opening hours. A large lockable storage space is available and is needed because of the makerspace's open configuration.

workplaces

40

floor area



● makerspace
○ floor area per person

261 m²
6,5 m²

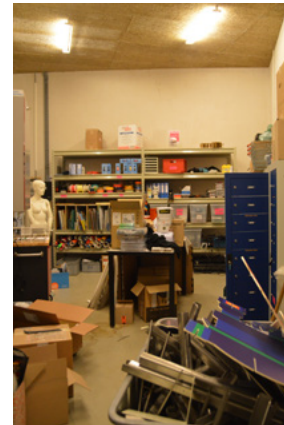
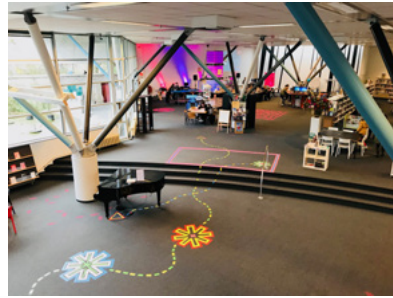
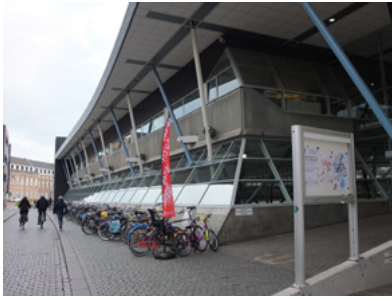
facilities

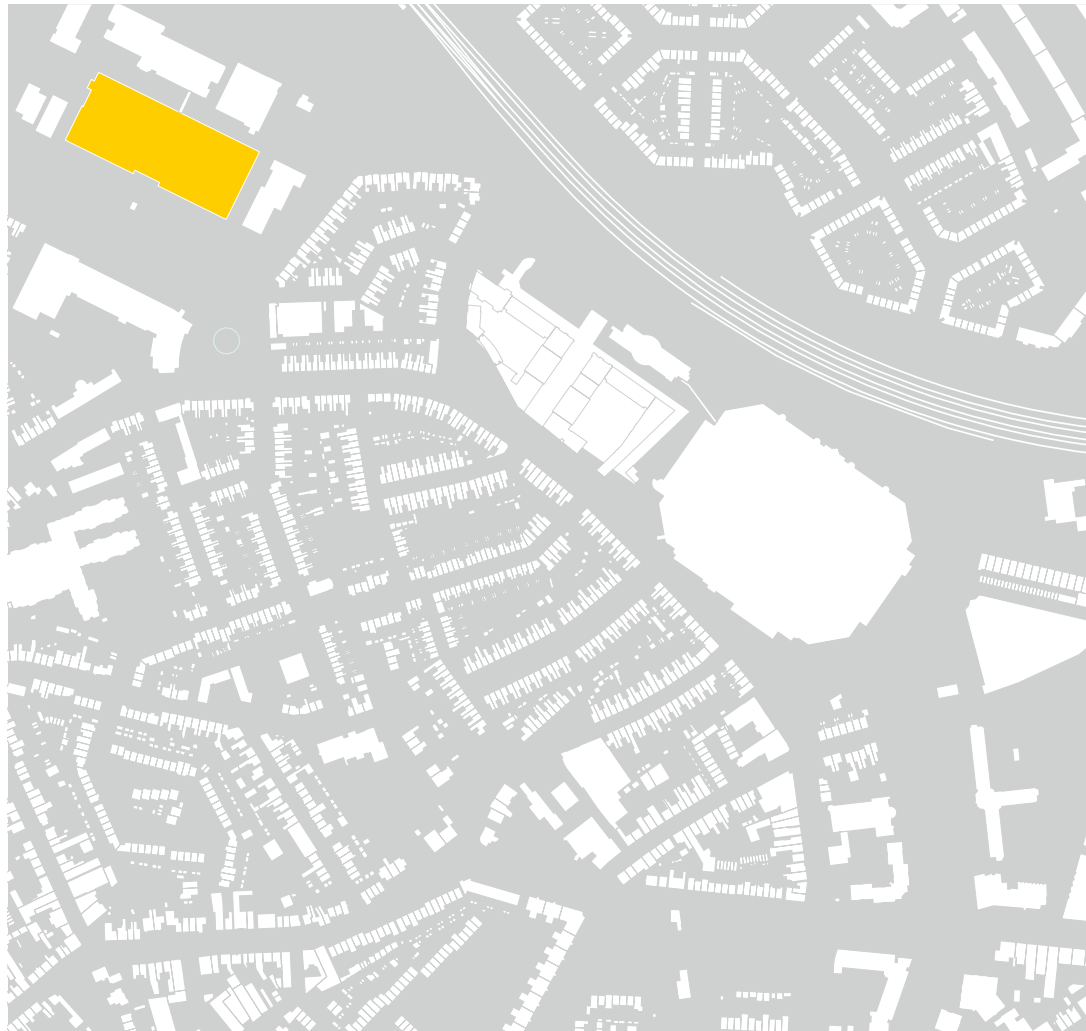
cooking and food	●	graphic design	●
creative writing	●	game design	●
virtual reality	●	robotics	●
jewellery	●	3d drawing	●
textiles	●	3d scanning	●
music	●	3d printing	●
art	●	coding dojo	●
audio	●	vinyl cutting	●
video	●	2d laser cutting	●
materials	●	Lego	●
		handicrafts	●

building

library

makerspace





Eindhoven

The makerspace is located in the Microlab, a creative industry building in an industrial area, far from the main location of Eindhoven's public library in the city center.

population 229.126

CBS, 2018

area 88,92 km²

CBS, 2018

population per km² 2.587

CBS, 2017

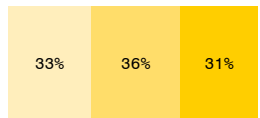
annual household income € 21.800

CBS, 2014

education level

CBS, 2011

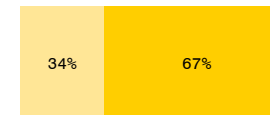
- low educated
- middle educated
- highly educated



background

CBS, 2017

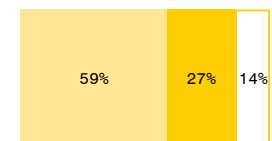
- migration background
- Dutch background



labor sectors

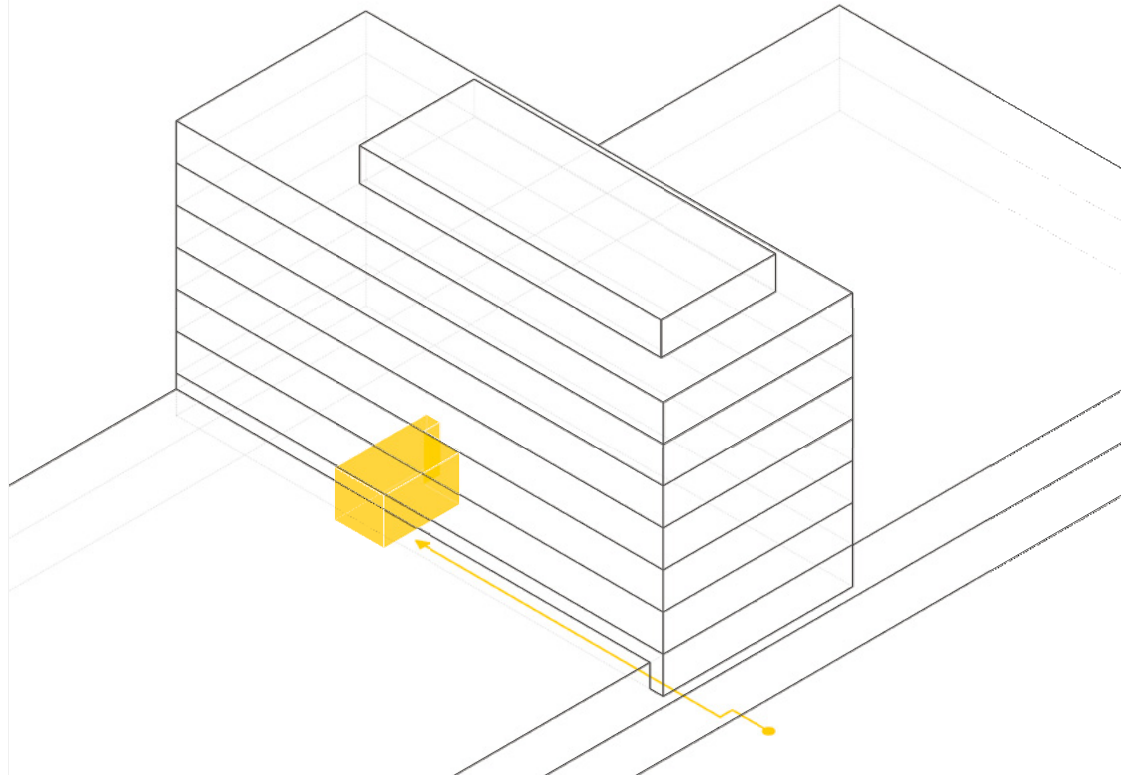
CBS, 2016

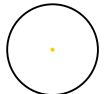
- commercial service
- non-commercial service
- onbekend



Bibliotheek Eindhoven

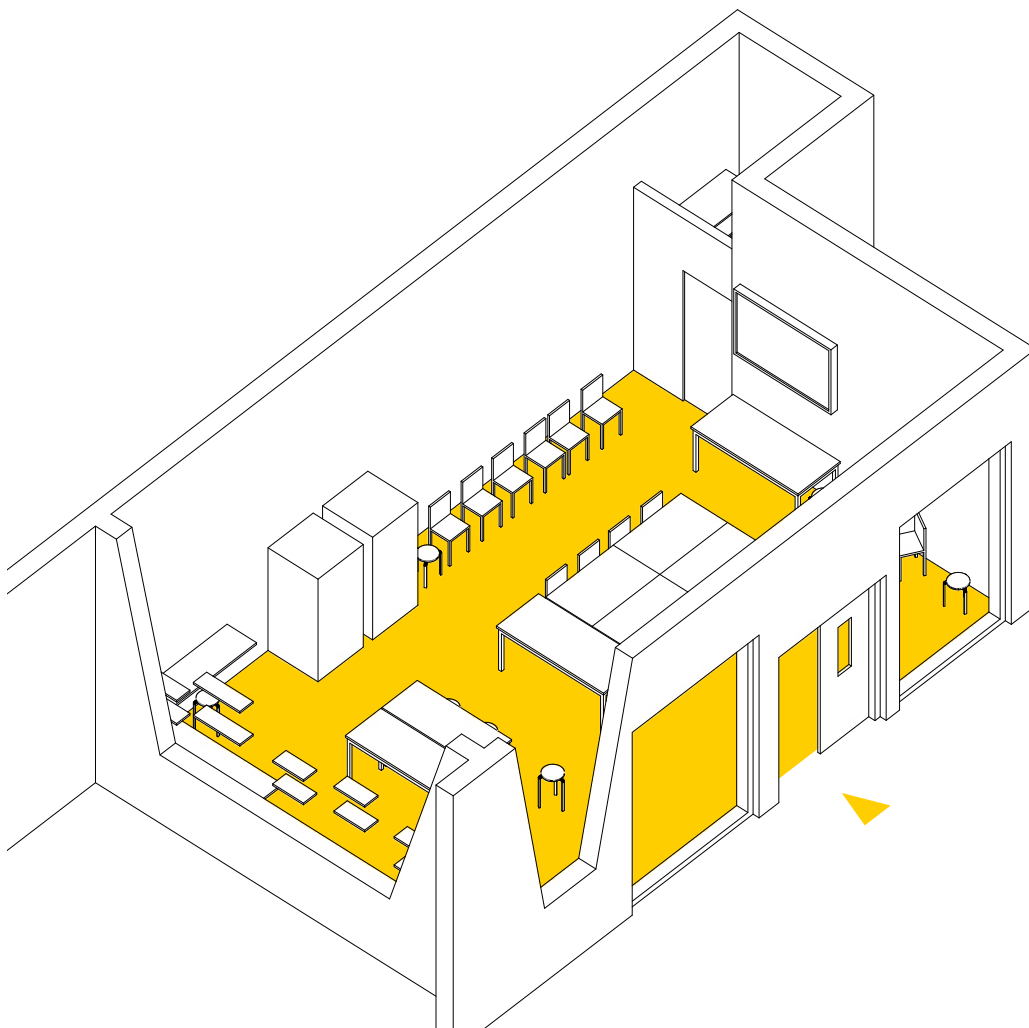
The room has no connection with the surrounding urban space and is only visible in the specific corridor of the building it is located in. Besides of one textual sign there is no recognizable connection with the (public) library.



scale	M
space	enclosed
arts and crafts	●
twenty-first century skills	●
floor area	<div style="display: flex; align-items: center;"> <div style="margin-right: 10px;">○ building</div> <div style="margin-right: 10px;">● library</div> <div style="margin-right: 10px;">● makerspace</div> <div style="text-align: center;">  <p>31.590 m² not applicable 65 m²</p> </div> </div>

Microlab Strijp-S, Techniekbieb

The makerspace is a well lit, plain space equipped for both handicraft and digital purposes. A small lockable storage space is available. There is competition with a commercial makerspace close-by.



workplaces

20

floor area



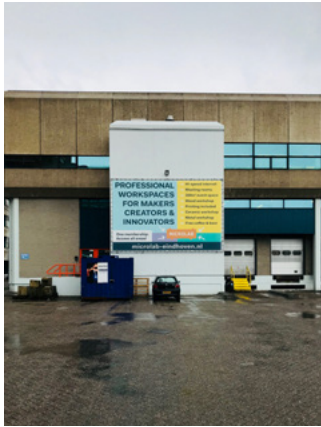
● makerspace
○ floor area per person

65 m²
3,3 m²

facilities

cooking and food	graphic design	
creative writing	game design	
virtual reality	robotics	●
jewelry	3d drawing	
textiles	3d scanning	
music	3d printing	●
art	coding dojo	●
audio	vinyl cutting	
video	2d laser cutting	●
materials	Lego	●
	handicrafts	●

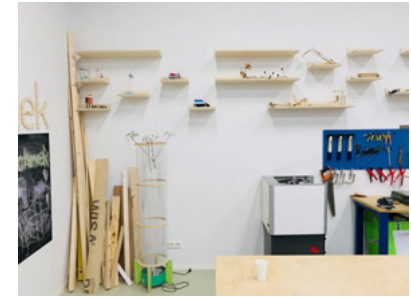
building

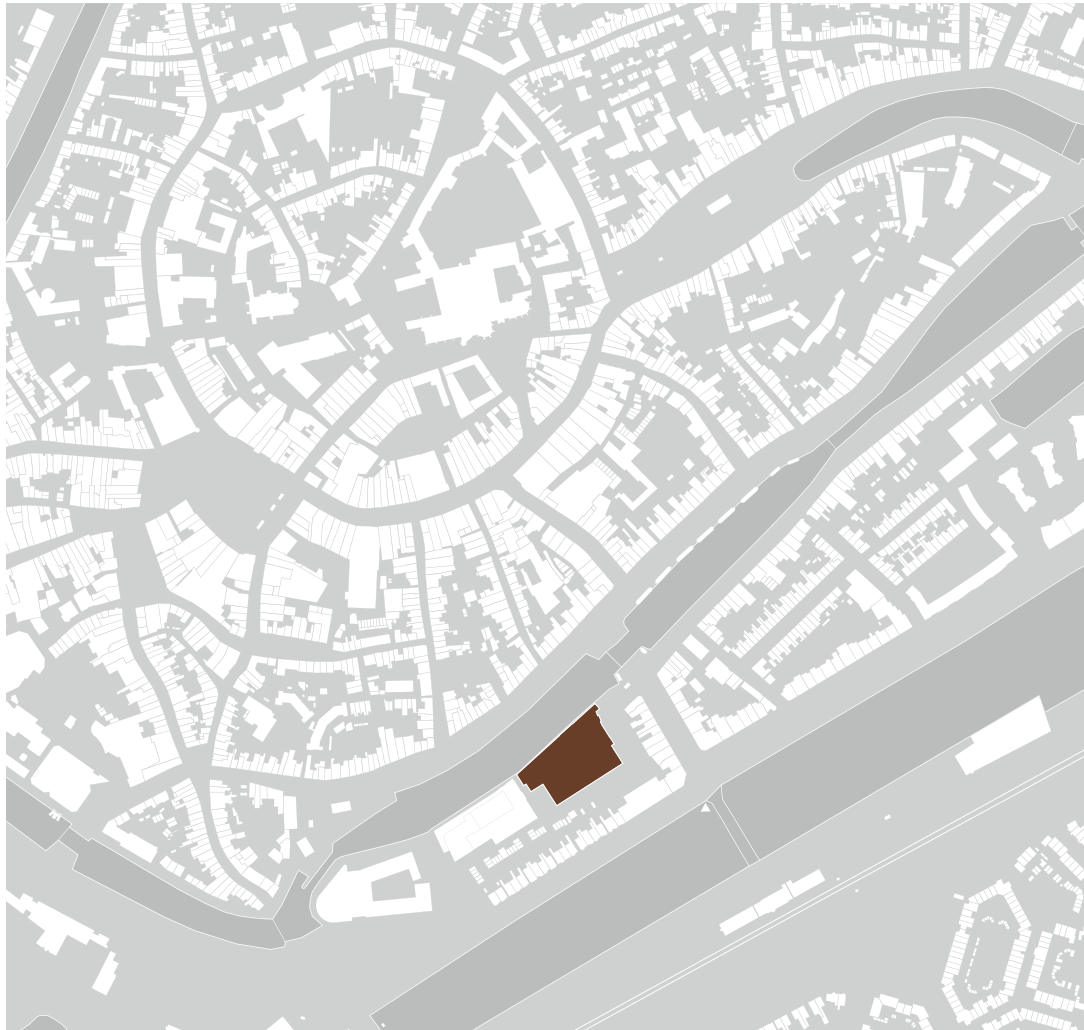


building (interior)



makerspace





Middelburg

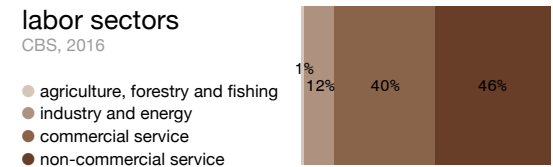
The library buildings hosts a planning office and an auditorium and is located on a waterfront with good views on the belt of the old city center.

population 48.303
CBS, 2018

area 53,04 km²
CBS, 2018

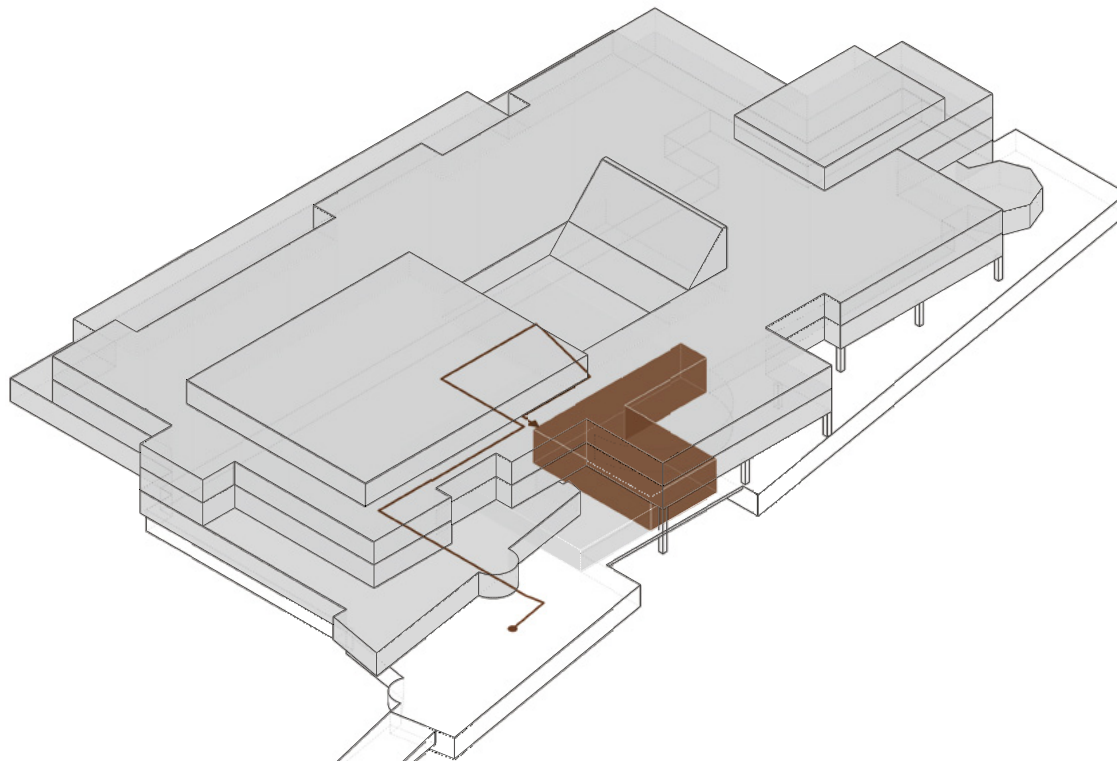
population per km² 991
CBS, 2017


annual household income € 31.000
CBS, 2014

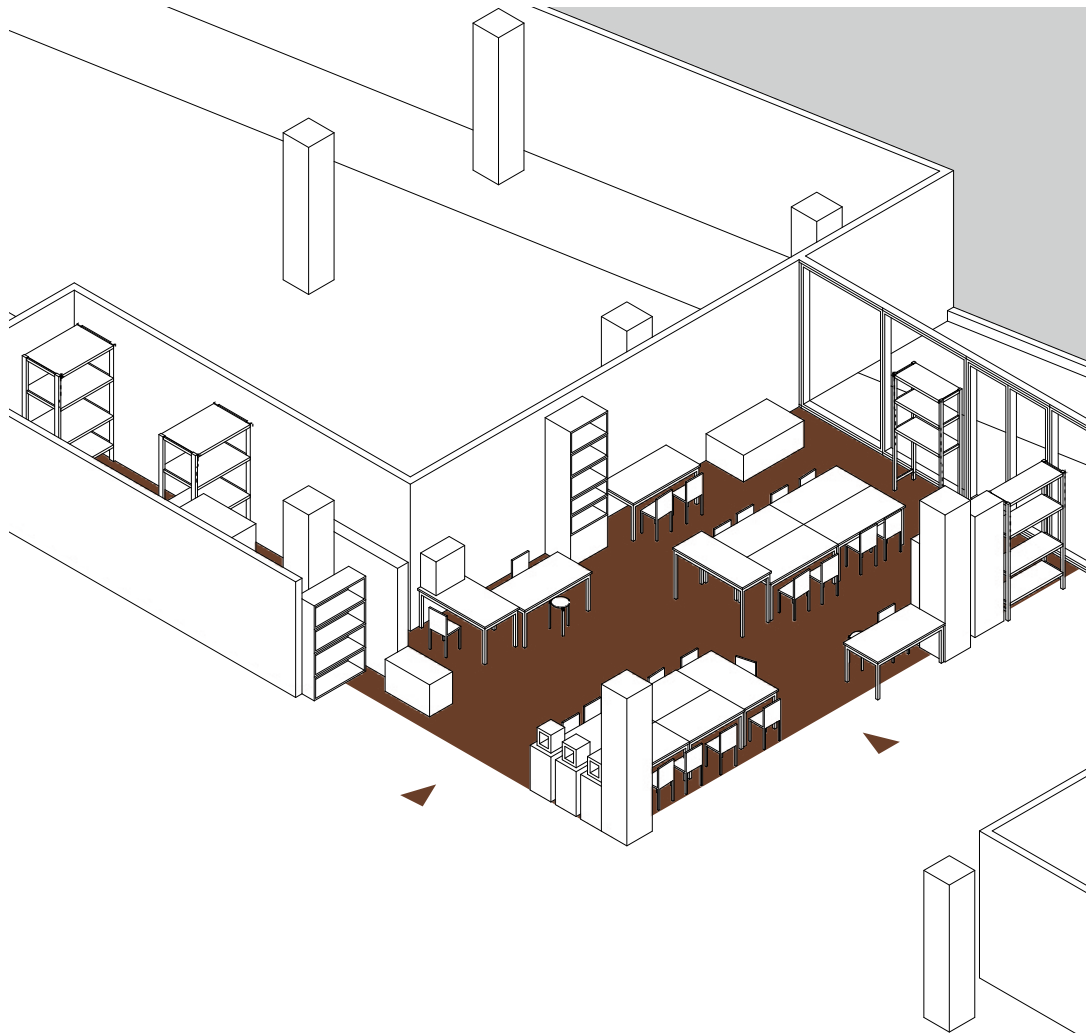


ZB Middelburg

The makerspace is located in the basement which is on the same floor as the auditorium. This seems a quite isolated location, but it offers a quiet space to work. Because of the open space configuration the makerspace is recognizable as such.



scale	M
space	open plan
arts and crafts	●
twenty-first century skills	●
floor area	
	<ul style="list-style-type: none"> ○ building 8.011 m² ● library 5.632 m² ● makerspace 98 m²



Fablab Zeeland

From the other side of the water one could not recognize this part of the basement as a makerspace. There is a lockable storage room which is in need because of the open configuration.

workplaces

25

floor area



● makerspace

98 m²

○ floor area per person

3,9 m²

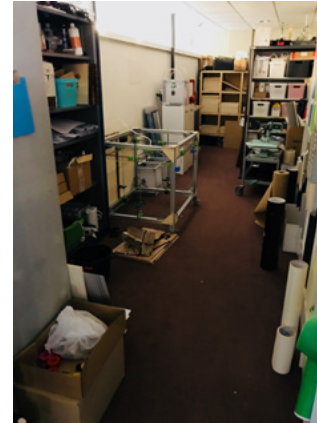
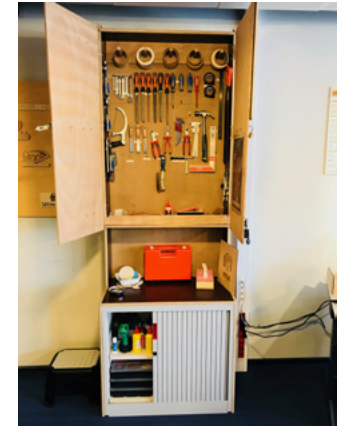
facilities

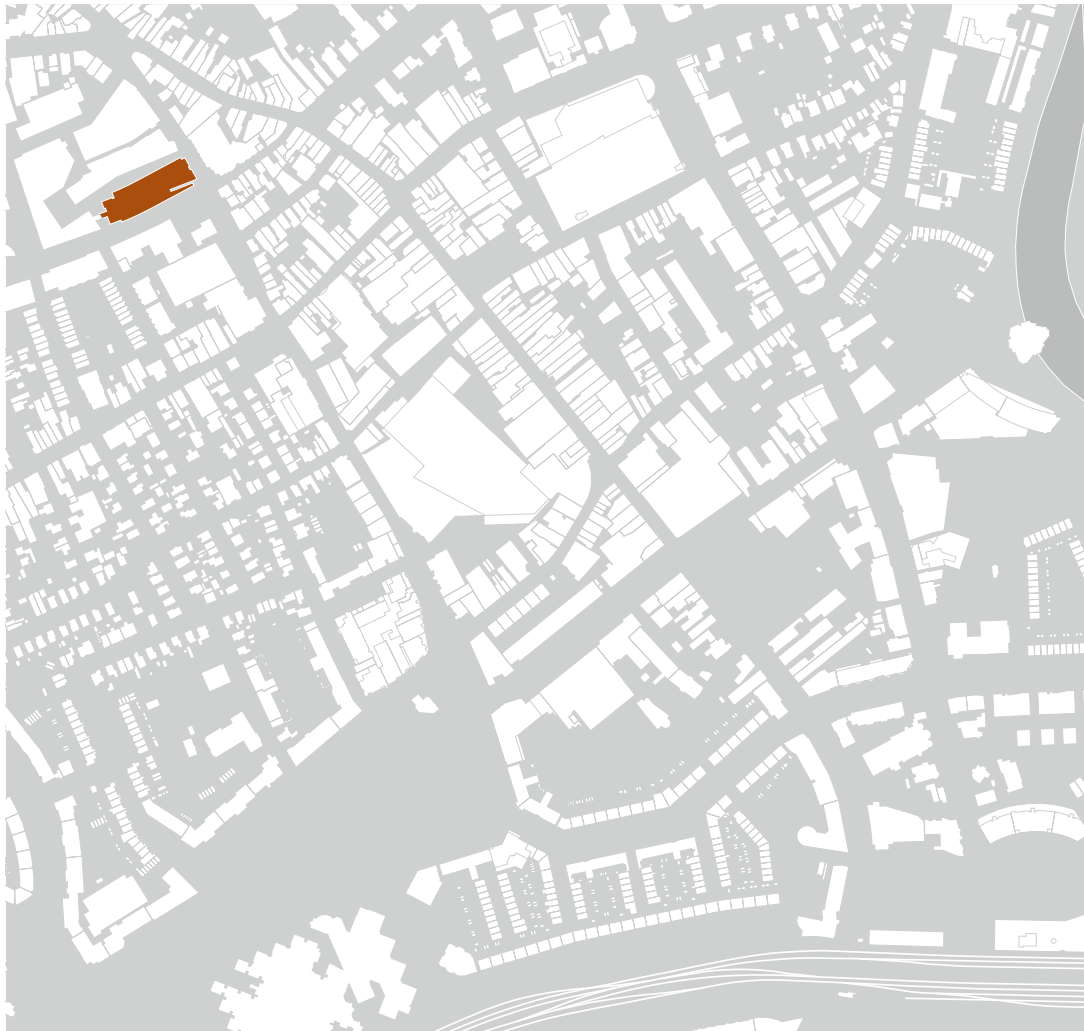
cooking and food	●	graphic design	●
creative writing	●	game design	●
virtual reality	●	robotics	●
jewelery	●	3d drawing	●
textiles	●	3d scanning	●
music	●	3d printing	●
art	●	coding dojo	●
audio	●	vinyl cutting	●
video	●	2d laser cutting	●
materials	●	Lego	●
		handicrafts	●

building

library

makerspace





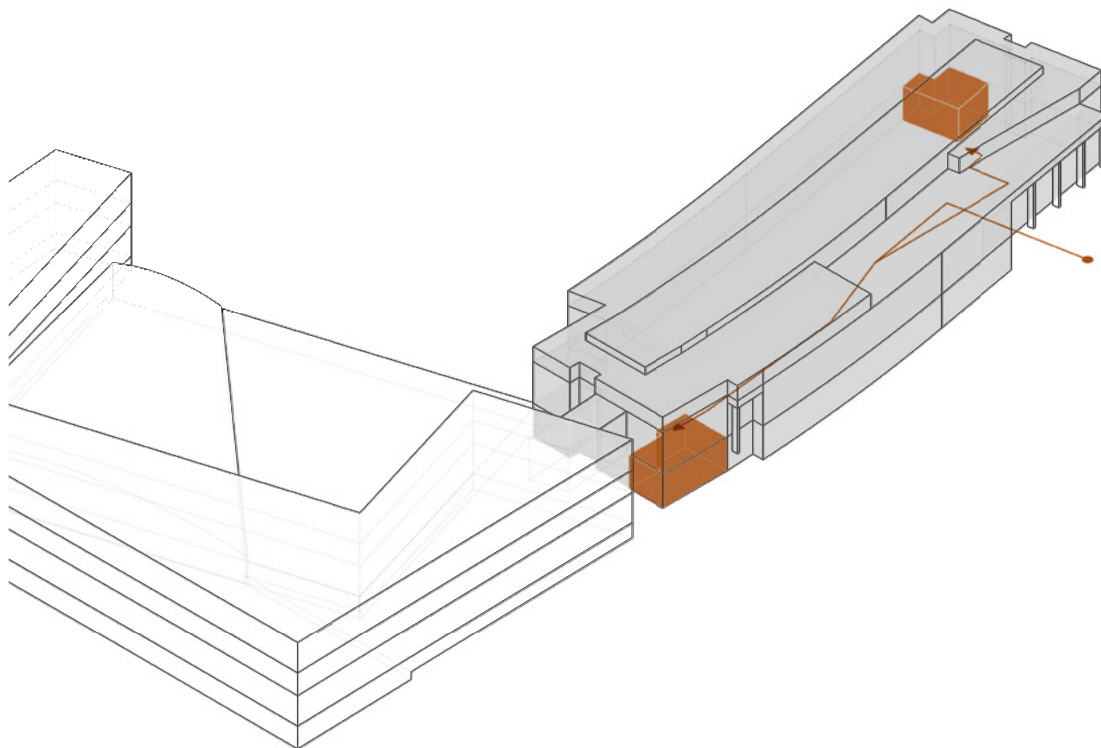
Apeldoorn

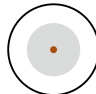
The two different buildings from two different decades form a multicultural center with a museum, archive and library.

population	161.156
<small>CBS, 2018</small>	
area	351,15 km ²
<small>CBS, 2018</small>	
population per km ²	471
<small>CBS, 2017</small>	
annual household income	€ 31.900
<small>CBS, 2014</small>	
education level	
<small>CBS, 2011</small>	
<ul style="list-style-type: none"> ● low educated ● middle educated ● highly educated 	
background	
<small>CBS, 2017</small>	
<ul style="list-style-type: none"> ● migration background ● Dutch background 	
labor sectors	
<small>CBS, 2016</small>	
<ul style="list-style-type: none"> ● industry and energy ● commercial service ● non-commercial service 	

CODA Apeldoorn

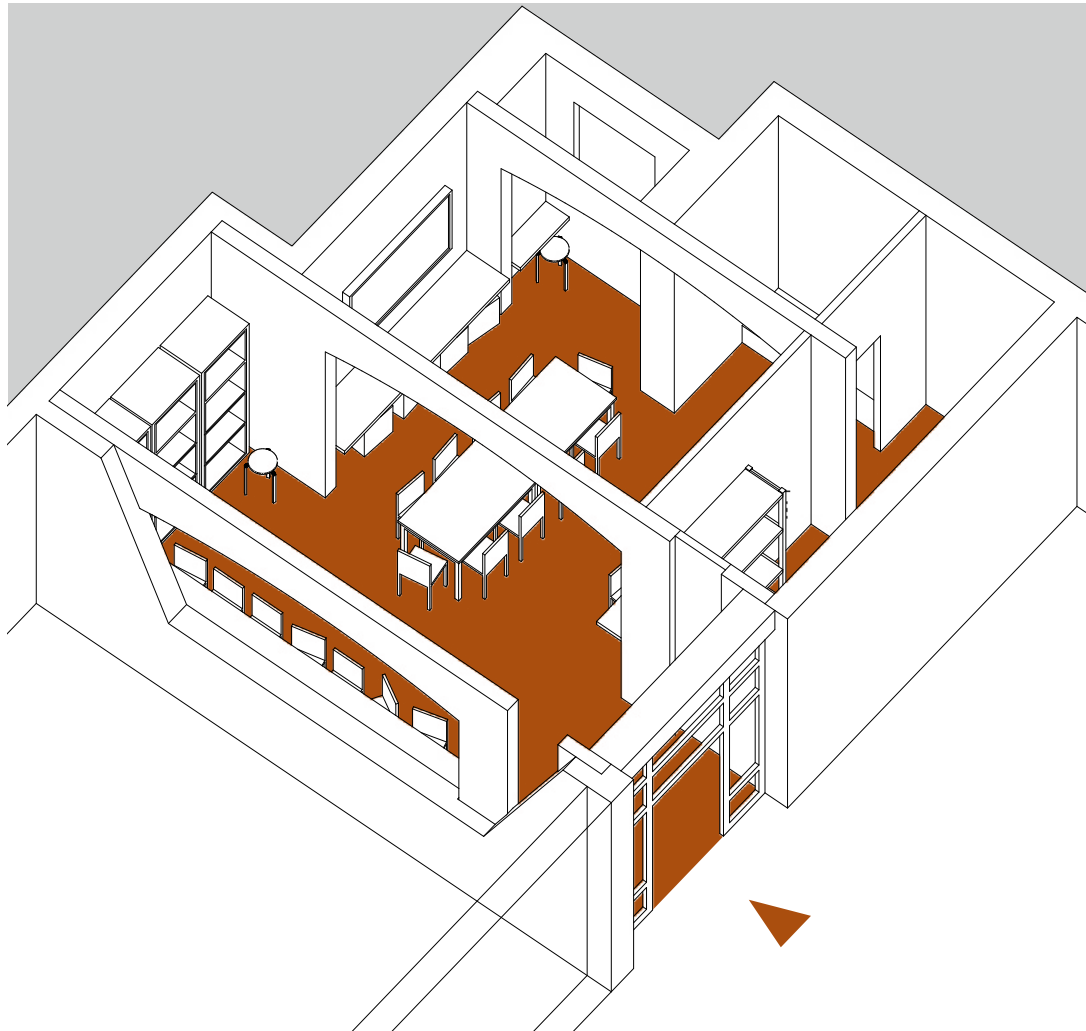
One of the two connected buildings hosts the library and the archive. The makerspace and the VR Lab are in the basement and have no visual connection with the urban space. They are adjacent to the children's books and gaming area.



scale	L
space	enclosed
arts and crafts	
twenty-first century skills	●
floor area	
	<ul style="list-style-type: none"> ○ building 16.162 m² ● library 5.580 m² ● makerspace 94 m²

CODA FabLab + CODA VRLab

The makerspace and the VR Lab are in different rooms far located from each other. The glass front and the large doors of the makerspace invite visitors to have a look. There is a lockable storage room available despite of the closed configuration.



workplaces

20

floor area



● makerspace
○ floor area per person

94 m²
4,7 m²

facilities

cooking and food	●	graphic design	●
creative writing	●	game design	●
virtual reality	●	robotics	●
jewelery	●	3d drawing	●
textiles	●	3d scanning	●
music	●	3d printing	●
art	●	coding dojo	●
audio	●	vinyl cutting	●
video	●	2d laser cutting	●
materials	●	Lego	●
		handicrafts	●

building



library



makerspace





Utrecht

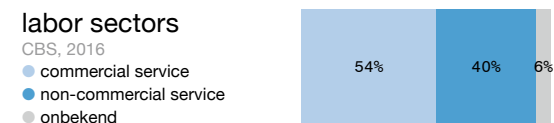
The reasonably old-fashioned furnished library (typical 80s Dutch renovation architecture) in Utrecht is in transition and will soon move to Neude, in the former monumental brick post office building.

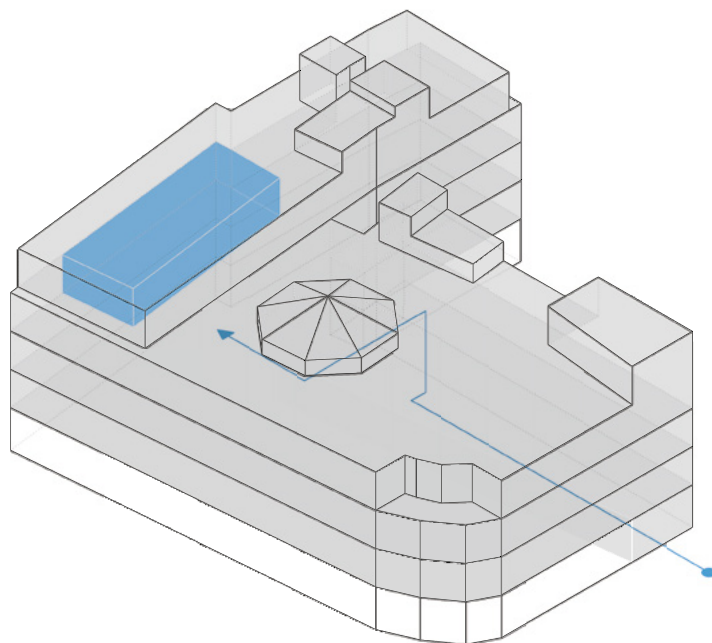
population 347.483
CBS, 2018

area 99,21 km²
CBS, 2018

population per km² 2.644
CBS, 2017


annual household income € 36.600
CBS, 2014

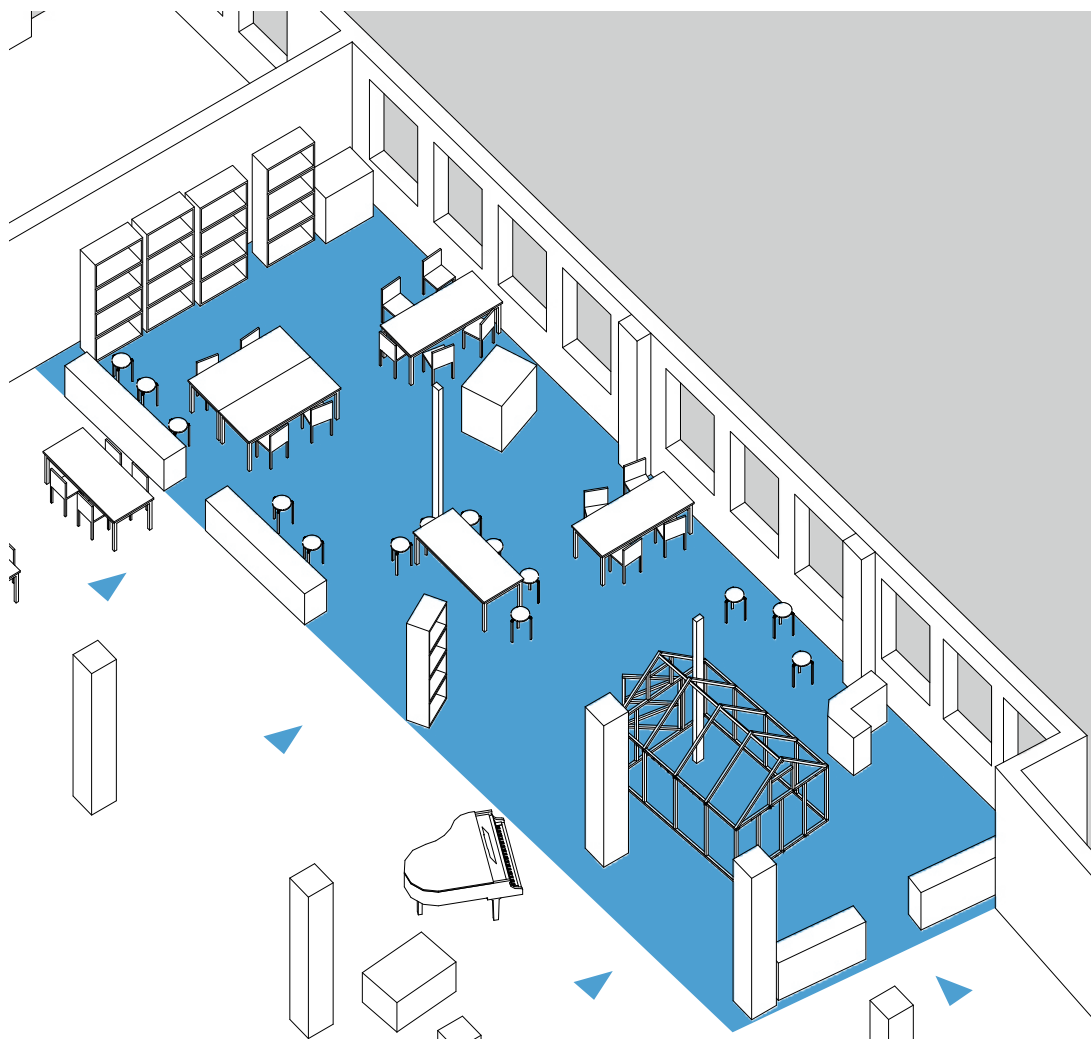




Centrale Bibliotheek

The makerspace is located on the top floor in a not strongly defined corner. The library shares the building with a large bookshop on the ground floor. Both functions have n own entrance.

scale	M
space	open plan
arts and crafts	●
twenty-first century skills	●
floor area	
○ building	6.310 m ²
● library	4.451 m ²
● makerspace	130 m ²



Laboratorium

The space is delimited by painted wooden cabinets and there is a greenhouse in the space that also serves as storage for some equipment when the makerspace is closed. There are large metal storage cupboards at the side in which the creations of visitors can be stored.

workplaces

15

floor area



● makerspace
○ floor area per person

130 m²
8,7 m²

facilities

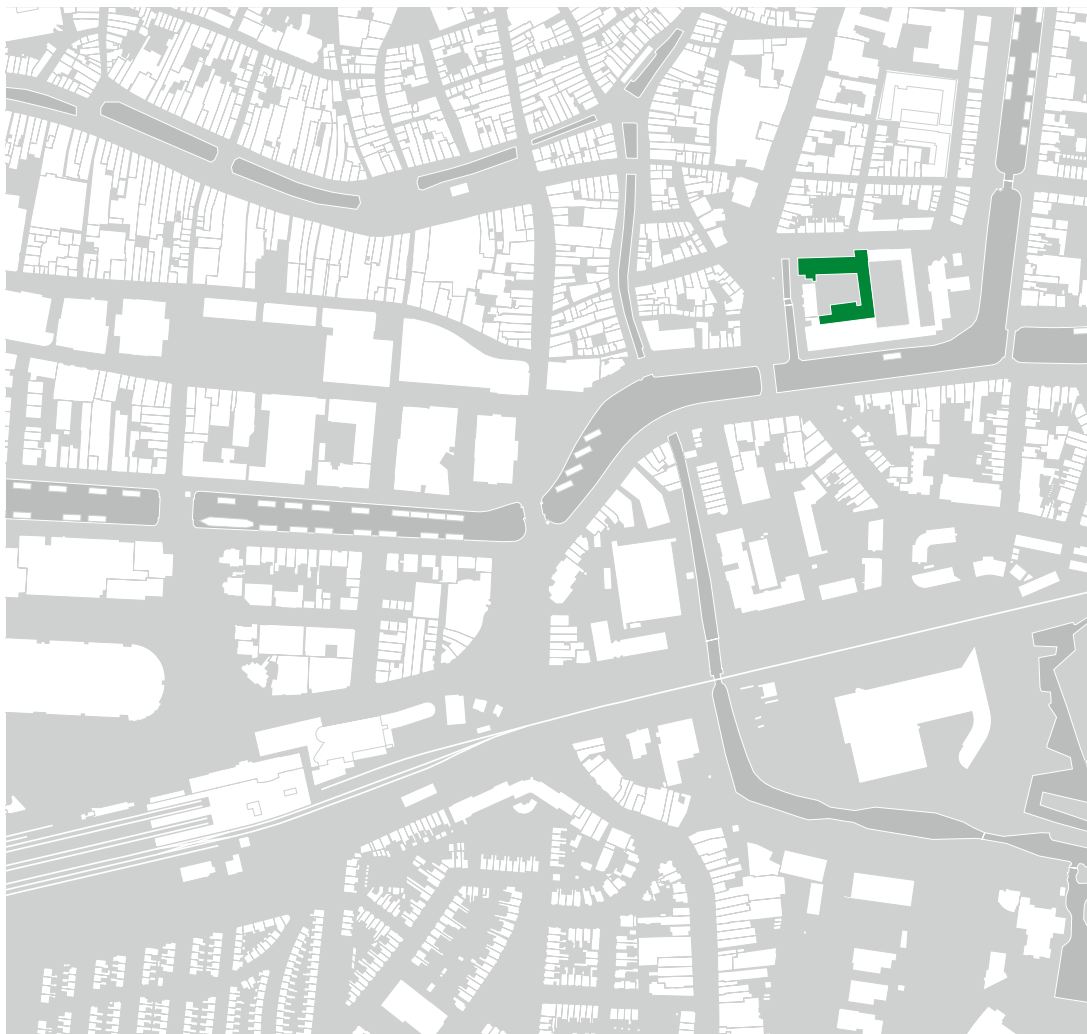
cooking and food	graphic design	
creative writing	game design	
virtual reality	robotics	●
jewelry	3d drawing	●
textiles	3d scanning	
music	3d printing	●
art	coding dojo	●
audio	vinyl cutting	●
video	2d laser cutting	
materials	Lego	
	handicrafts	●

building

library

makerspace





Leeuwarden

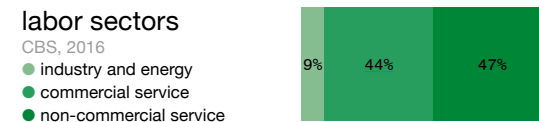
dbieb in Leeuwarden is part of a creative complex that used to serve as a penitentiary and shares the building with other creative companies like a bookbinding service and game design studios.

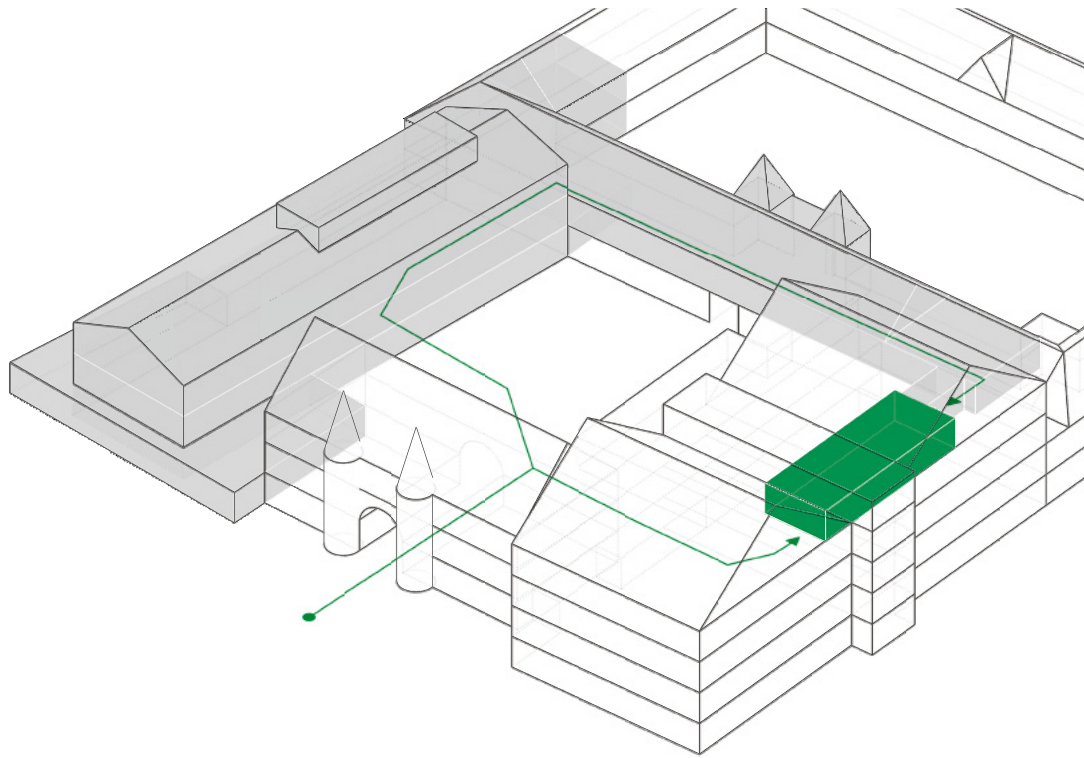
population	122.415
<small>CBS, 2018</small>	

area	170,23 km ²
<small>CBS, 2018</small>	

population per km ²	704
<small>CBS, 2017</small>	

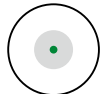
annual household income	€ 29.400
<small>CBS, 2014</small>	

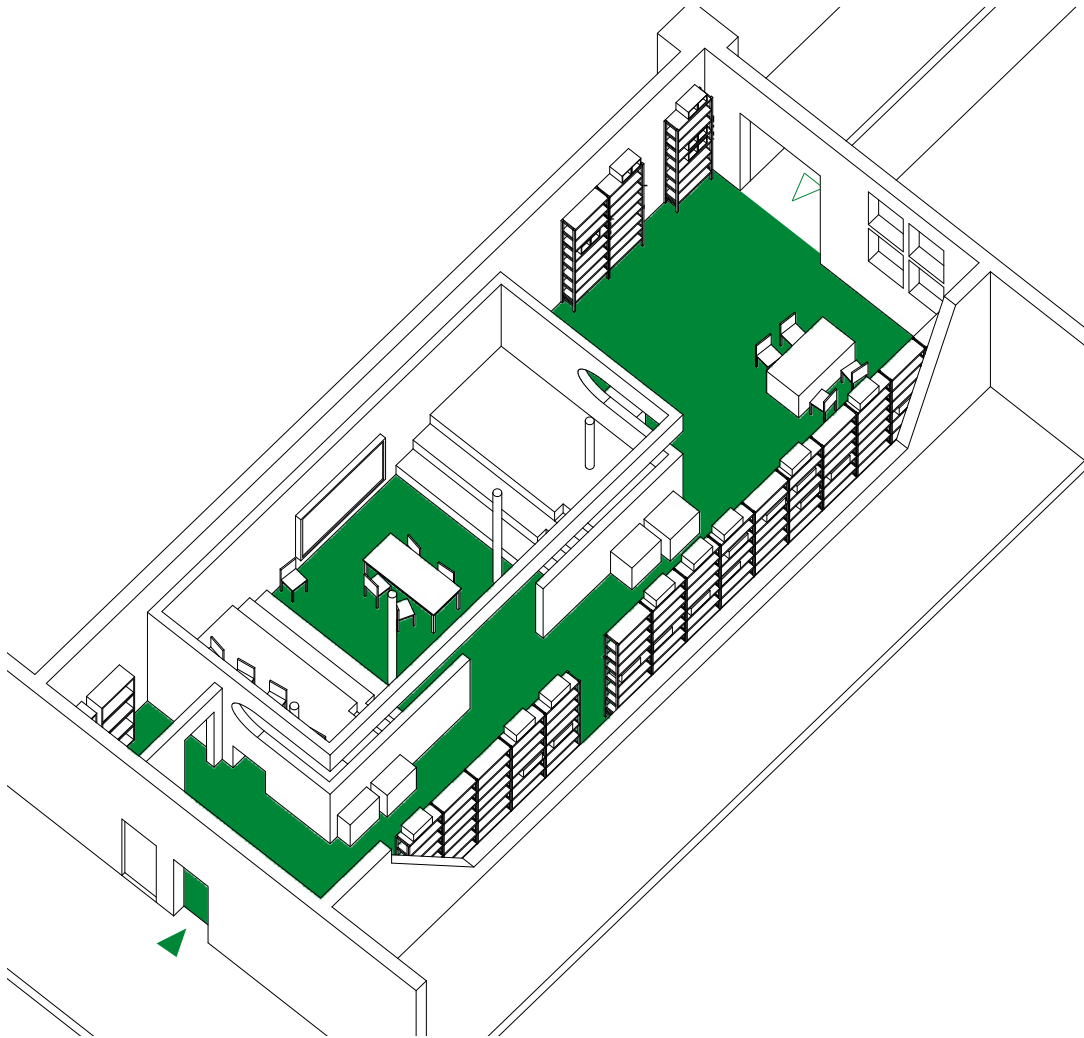




dbieb

The spatial layout is based on a linear route through the library part whereof the maker-space is located at the end. It makes extensive use of educational Lego. Ready-made projects are arranged through a collaboration with a local Lego dealer.

scale	L
space	enclosed
arts and crafts	
twenty-first century skills	●
floor area	
	<ul style="list-style-type: none"> ○ building 19.031 m² ● library 3.513 m² ● makerspace 139 m²



Werkplaats

The maker's site makes extensive use of educational Lego as a means of transmission. Ready-made educational projects are arranged through a collaboration with a local Lego dealer. The green furniture piece can serve as a green screen and stage for Lego designed educational *robobattles*.

workplaces

15

floor area



● makerspace
○ floor area per person

139 m²
9,3 m²

facilities

cooking and food	●	graphic design	
creative writing	●	game design	
virtual reality	●	robotics	●
jewellery	●	3d drawing	●
textiles		3d scanning	
music		3d printing	
art	●	coding dojo	●
audio	?	vinyl cutting	
video	●	2d laser cutting	
materials	●	Lego	●
		handicrafts	

building

library

makerspace





Zwolle

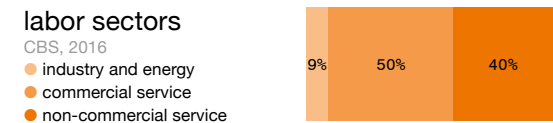
This library has been in 2018 awarded as 'best library in the Netherlands'. It is an old office building that has been stripped and converted into a cultural living room in Zwolle.

population 126.116
CBS, 2018

area 119,36 km²
CBS, 2018

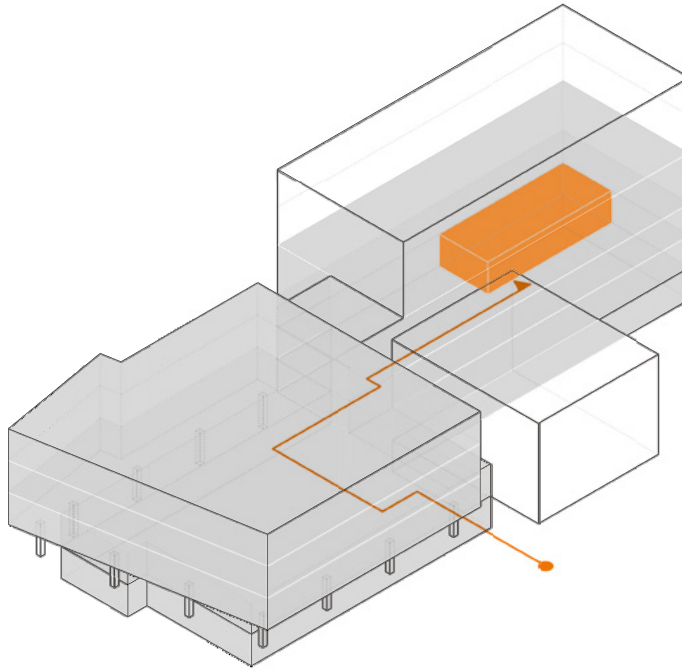
population per km² 1.128
CBS, 2017

annual household income € 32.200
CBS, 2014

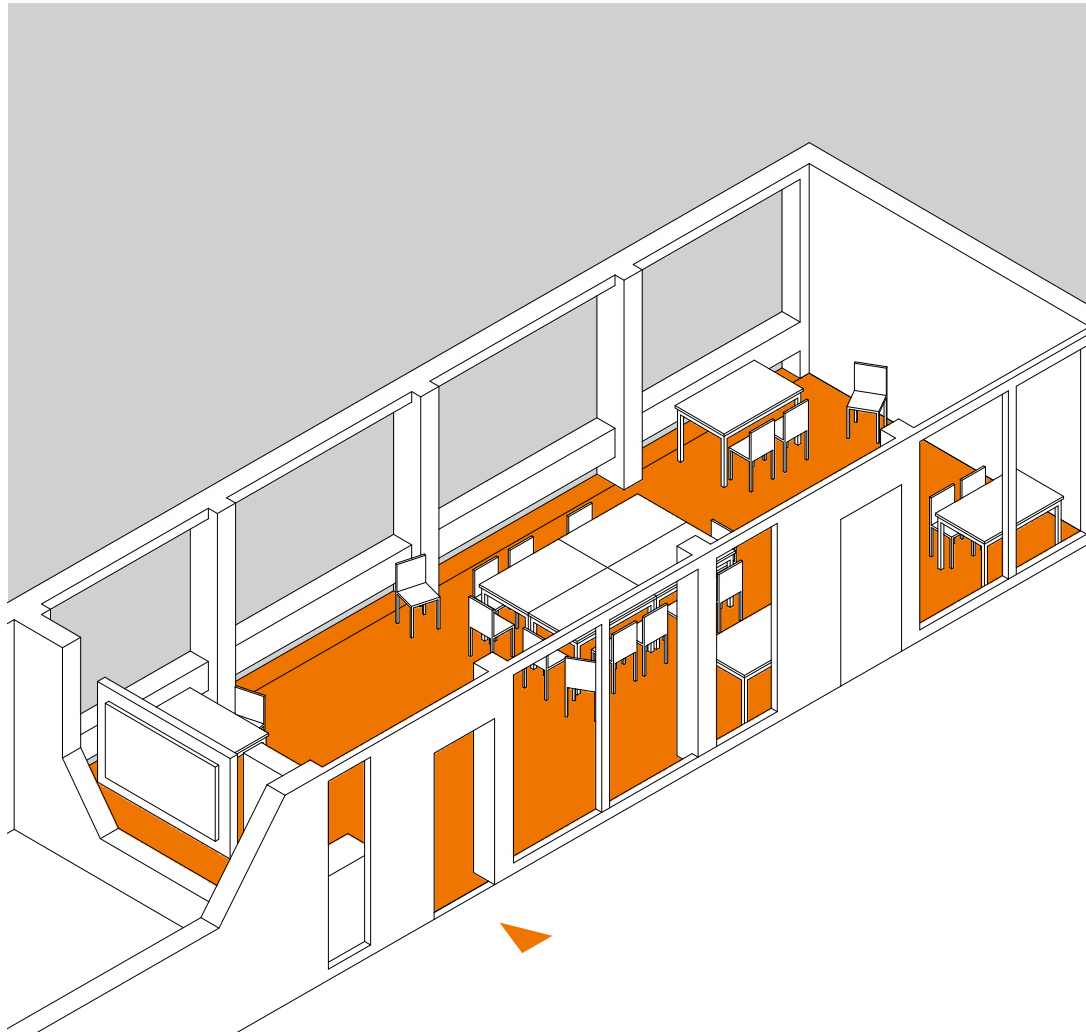


Stadkamer Centrum

The makerspace location in the library is not ideal. The originally chosen space had to make room for the machines to return books. It is a makerspace of medium size with no fixed program. There is plenty of daylight. It is located in a corridor among several similar spaces.



scale	M
space	enclosed
arts and crafts	
twenty-first century skills	●
floor area	
	<ul style="list-style-type: none"> ○ building 6.003 m² ● library 4.645 m² ● makerspace 70 m²



Medialab

The lab contains only a large screen, VR possibilities and some 3D printers and focuses on digital skills. The approach of using the makerspace is *quid pro quo*. Use is only possible and allowed if you give something back to the Stadkamer, for example in the form of a workshop.

workplaces

15

floor area



● makerspace
○ floor area per person

70 m²
4,7 m²

facilities

cooking and food	●	graphic design	
creative writing	●	game design	
virtual reality		robotics	
jewellery		3d drawing	
textiles	●	3d scanning	
music	●	3d printing	●
art	●	coding dojo	●
audio	●	vinyl cutting	
video		2d laser cutting	
materials		Lego	
		handicrafts	

building



library



makerspace





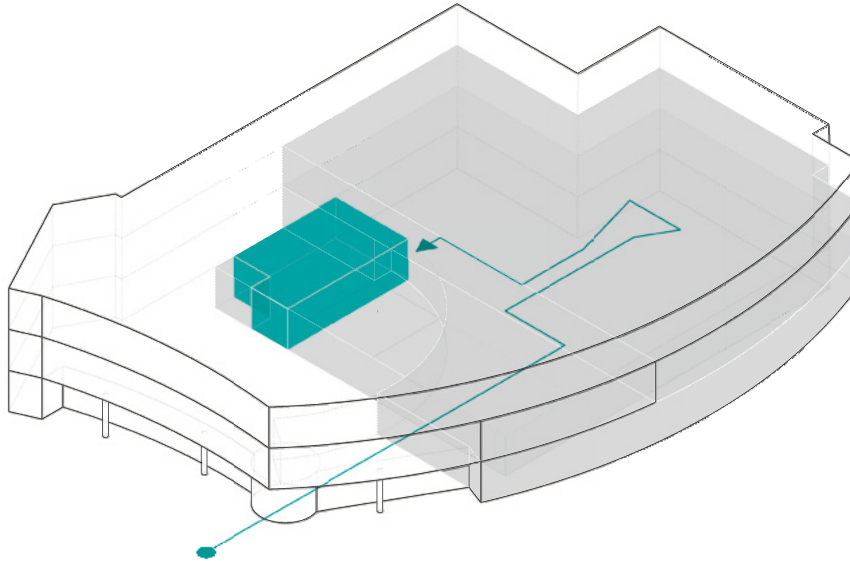
Steenwijk

The library of Steenwijk is a small library that serves small villages in the region. Every Saturday morning the makerspace has an open walk-in.

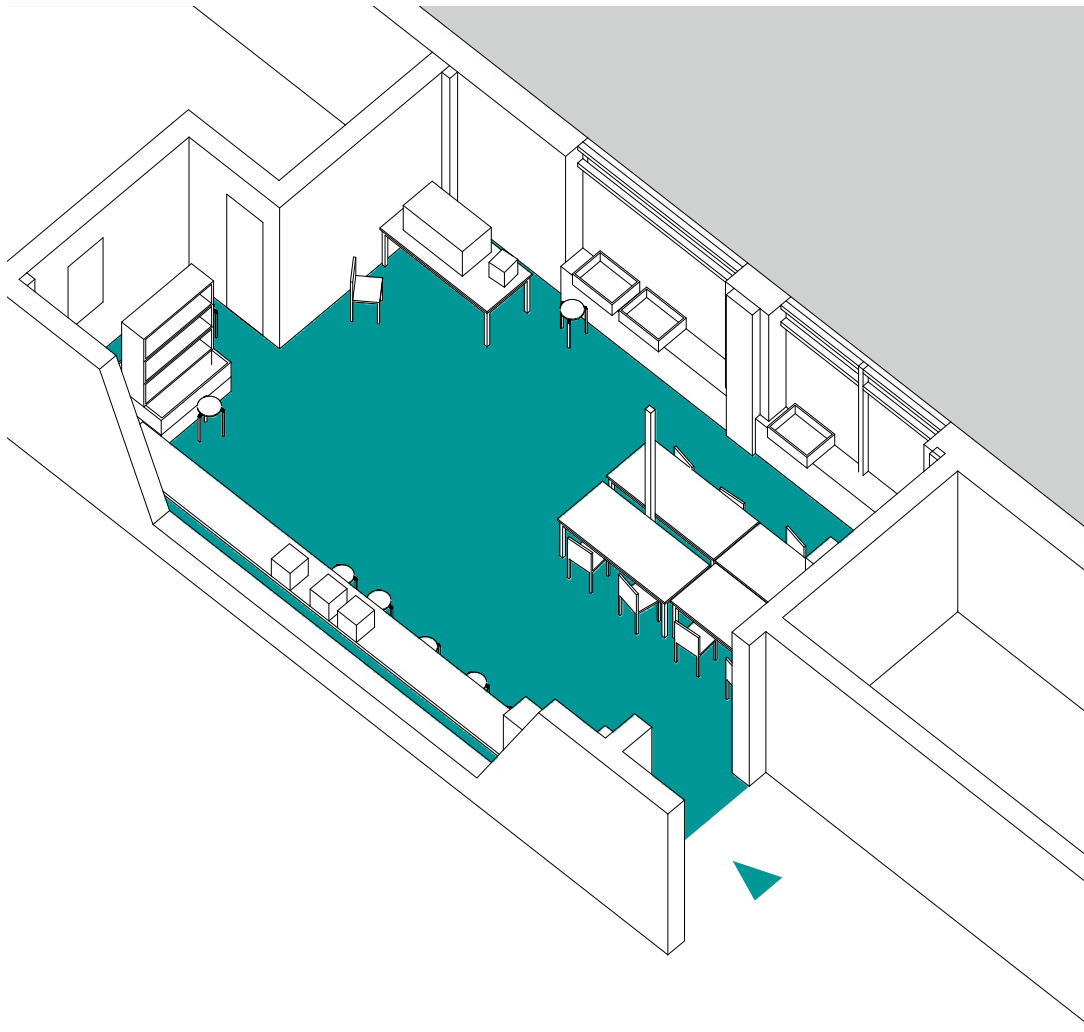
population	43.768
<small>CBS, 2018</small>	
area	321,59 km ²
<small>CBS, 2018</small>	
population per km ²	150
<small>CBS, 2017</small>	
annual household income	€ 28.400
<small>CBS, 2014</small>	
education level	
<small>CBS, 2011</small>	
<ul style="list-style-type: none"> ● low educated ● middle educated ● highly educated 	
background	
<small>CBS, 2017</small>	
<ul style="list-style-type: none"> ● migration background ● Dutch background 	
labor sectors	
<small>CBS, 2016</small>	
<ul style="list-style-type: none"> ● agriculture, forestry and fishing ● industry and energy ● commercial service ● non-commercial service 	

Bibliotheek Steenwijk

Because the library shares the same building with a bank, extra security is needed. The location of the makerspace is in the cellar where the windows are blinded by order of the bank. It is not easy to find it.



scale	M
space	enclosed
arts and crafts	
twenty-first century skills	●
floor area	
○ building	3.113 m ²
● library	1.913 m ²
● makerspace	58 m ²



KennisLab

The standard collection of equipment is available. Besides of the open walk-ins programs are set up to receive groups. The employees are very passionate about the activities because of their personal affinity and are very much willing to help and think along with the visitors.

workplaces

10

floor area



● makerspace

58 m²

● floor area per person

5,8 m²

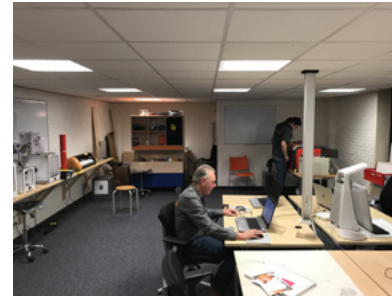
facilities

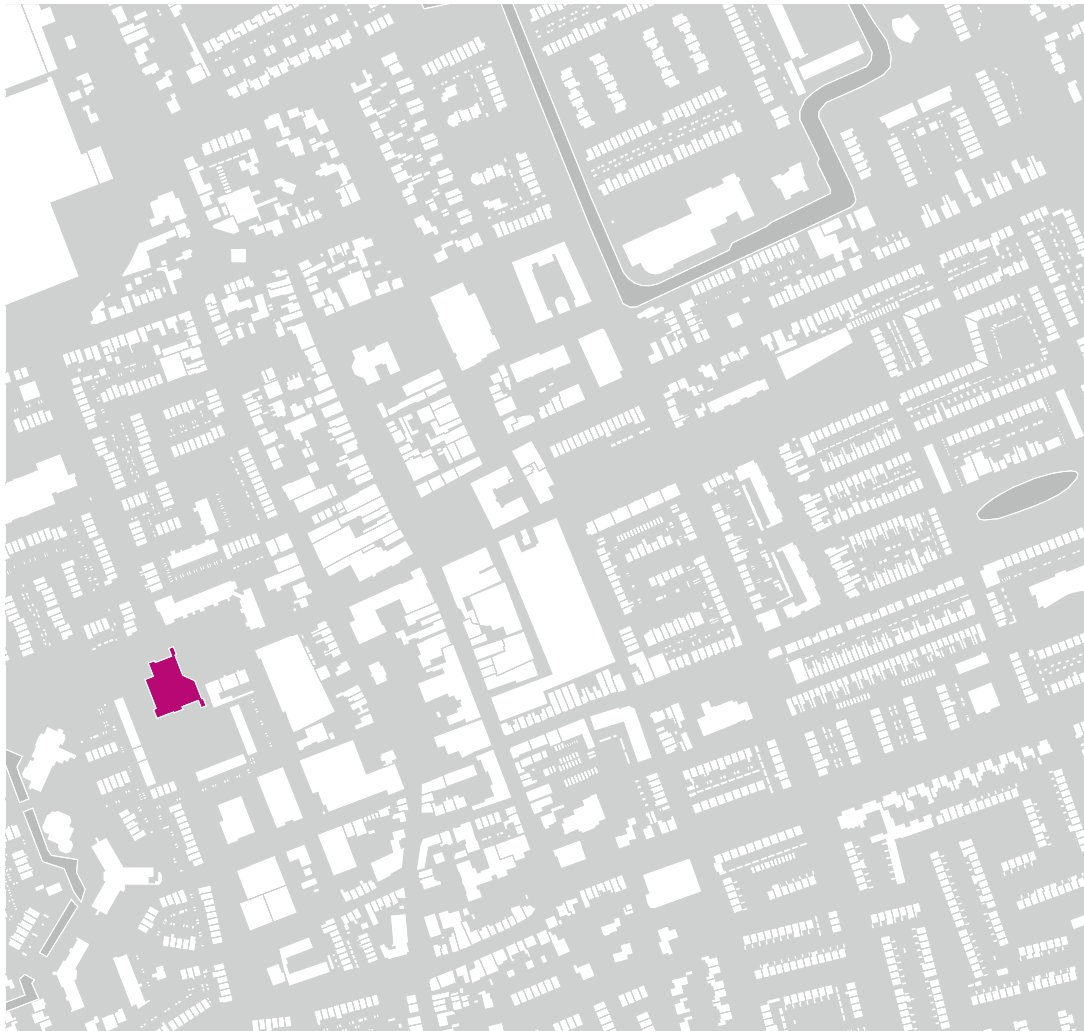
cooking and food	●	graphic design	●
creative writing	●	game design	●
virtual reality	●	robotics	●
jewellery	●	3d drawing	●
textiles	●	3d scanning	●
music	●	3d printing	●
art	●	coding dojo	●
audio	●	vinyl cutting	●
video	●	2d laser cutting	●
materials	●	Lego	●
		handicrafts	●

building

library

makerspace





's-Gravenzande

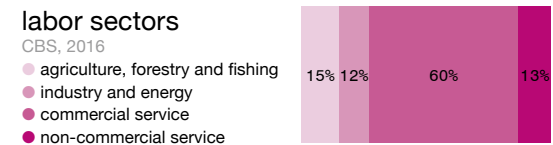
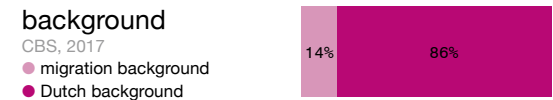
The transparent walls (window frames with windows) were already present in a corner as a former art loan of the library. This lockable space is easy to find.

population 107.492
CBS, 2018

area 90,74 km²
CBS, 2018

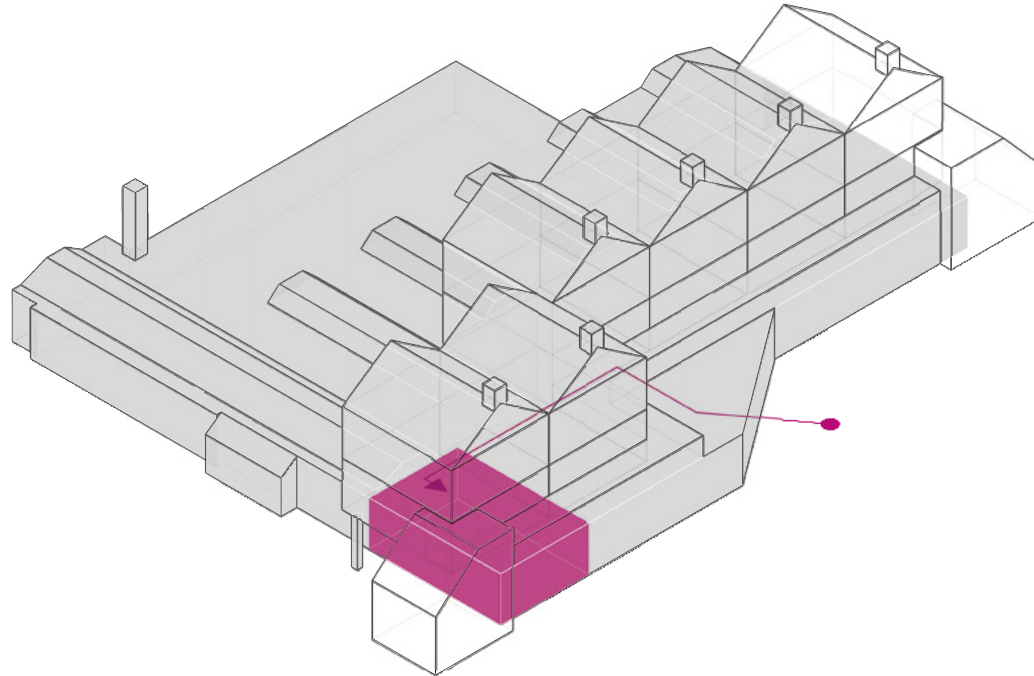
population per km² 1.300
CBS, 2017


annual household income € 31.200
CBS, 2014

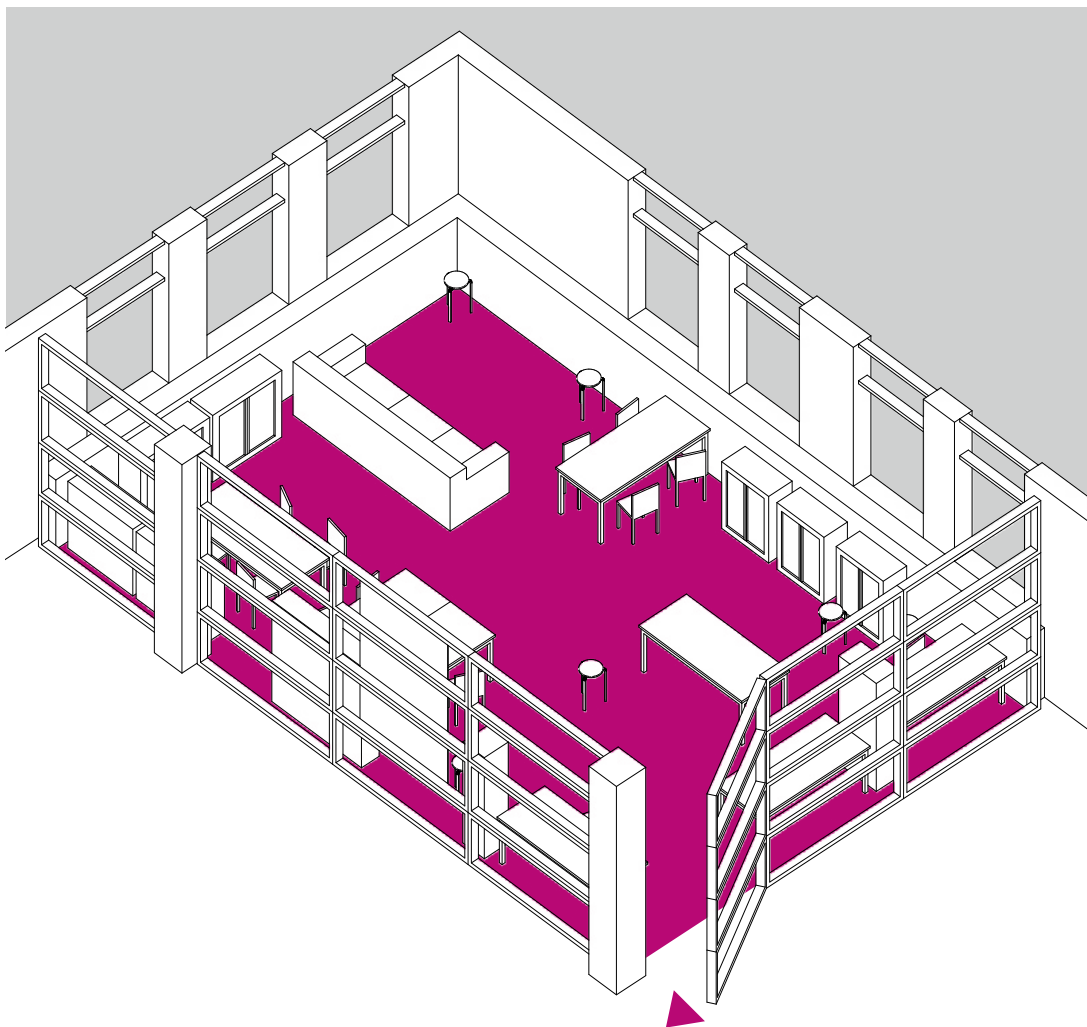


Bibliotheek Gravenzande

The room adjoins a reading café that many elderly people use. These often experience the noise produced by the children as a nuisance. An adjacent back space, beyond the reading room, is often involved in activities that do not require direct fixed equipment.



scale	S
space	enclosed
arts and crafts	
twenty-first century skills	●
floor area	
	<ul style="list-style-type: none"> ○ building 3.113 m² ● library 1.447 m² ● makerspace 75 m²



BiebLab

This maker place focuses on digital skills with a large part 3D printing. There is a VR corner available, and a couch to give a living room feeling. The makerspace is primary school focused.

workplaces

15

floor area



● makerspace

○ floor area per person

75 m²
5,0 m²

facilities

cooking and food ●
creative writing ●
virtual reality ●
jewelry ●
textiles ●
music ●
art ●
audio ●
video ●
materials ●

graphic design ●
game design ●
robotics ●
3d drawing ●
3d scanning ●
3d printing ●
coding dojo ●
vinyl cutting ●
2d laser cutting ●
Lego ●
handicrafts ●

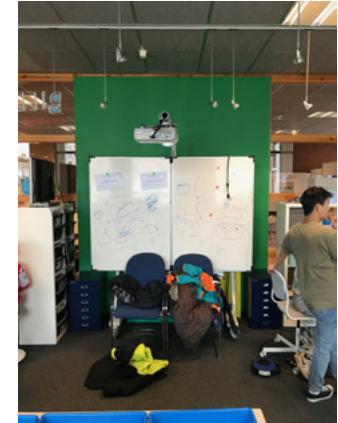
building



library



makerspace

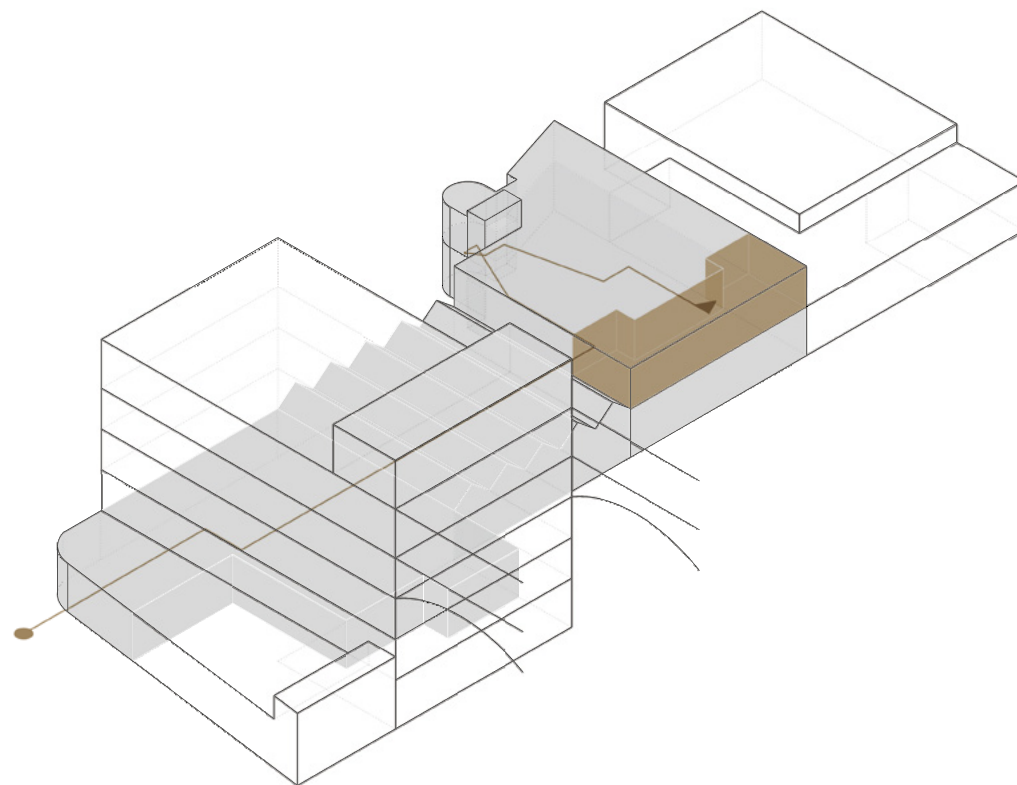




Amsterdam

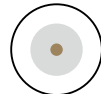
Amsterdam is undergoing major developments. A substantial investment has been made by the City of Amsterdam to create makerspaces at most of its library locations.

population CBS, 2018	854.047						
area CBS, 2018	219,49 km²						
population per km² CBS, 2017	5.111						
annual household income CBS, 2014	€ 35.800						
education level CBS, 2011	<table border="1"> <tr> <td>low educated</td> <td>29%</td> </tr> <tr> <td>middle educated</td> <td>31%</td> </tr> <tr> <td>highly educated</td> <td>40%</td> </tr> </table>	low educated	29%	middle educated	31%	highly educated	40%
low educated	29%						
middle educated	31%						
highly educated	40%						
background CBS, 2017	<table border="1"> <tr> <td>migration background</td> <td>53%</td> </tr> <tr> <td>Dutch background</td> <td>48%</td> </tr> </table>	migration background	53%	Dutch background	48%		
migration background	53%						
Dutch background	48%						
labor sectors CBS, 2016	<table border="1"> <tr> <td>industry and energy</td> <td>5%</td> </tr> <tr> <td>commercial service</td> <td>66%</td> </tr> <tr> <td>non-commercial service</td> <td>29%</td> </tr> </table>	industry and energy	5%	commercial service	66%	non-commercial service	29%
industry and energy	5%						
commercial service	66%						
non-commercial service	29%						



OBA Reigersbos

The Reigersbos location is part of a bigger office building attached to the Amsterdam metro system. The library has its own entrance. The makerspace is located far in the back, on the first floor close to an atrium.

scale	L
space	enclosed
arts and crafts	●
twenty-first century skills	●
floor area	
○ building	3.162 m ²
● library	1.052 m ²
● makerspace	59 m ²

Maakplaats 021

This makerspace is rather small but well equipped. All Amsterdam makerspaces have a standard set of equipment and enough storage space in open cabinets.

workplaces

10

floor area



● makerspace

59 m²

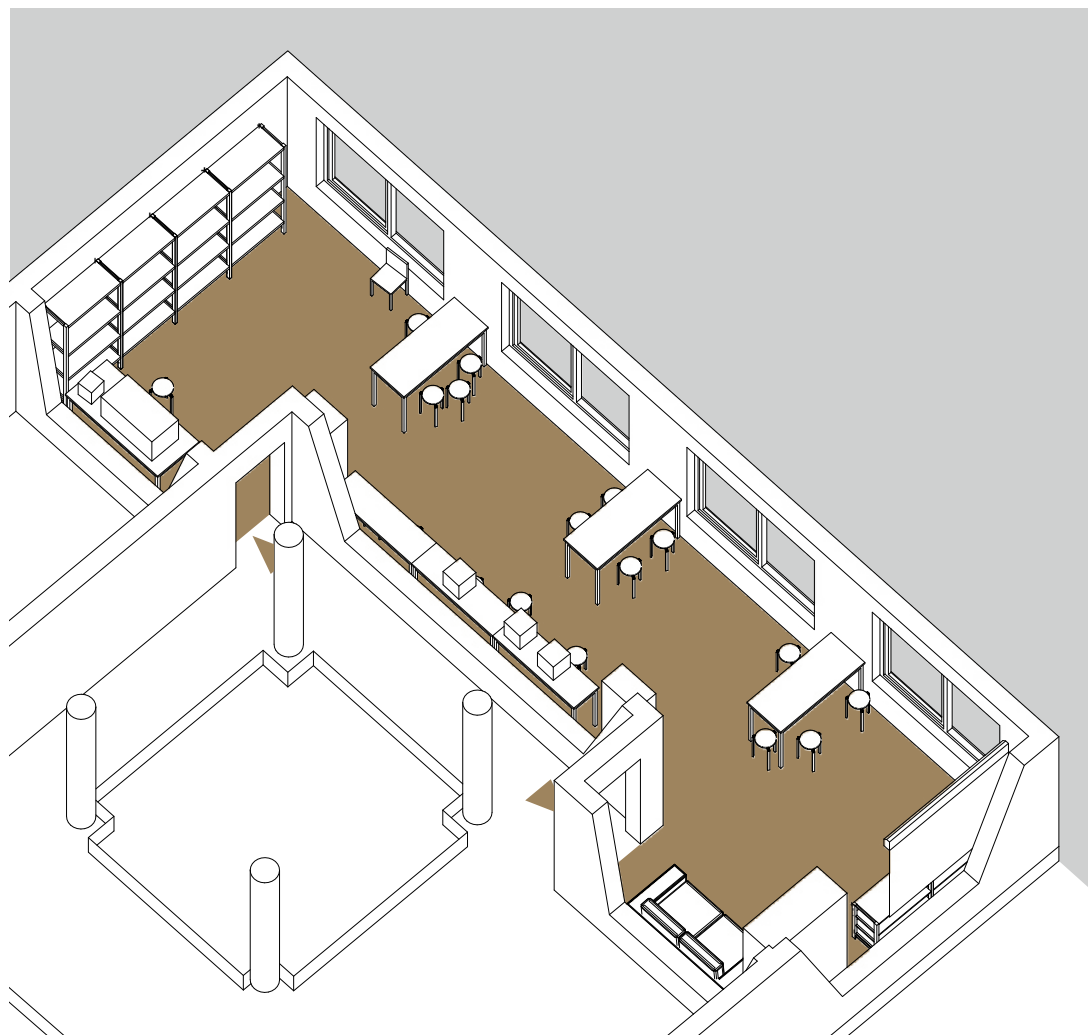
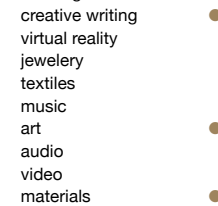
○ floor area per person

5,9 m²

facilities

cooking and food
creative writing
virtual reality
jewellery
textiles
music
art
audio
video
materials

graphic design
game design
robotics
3d drawing
3d scanning
3d printing
coding dojo
vinyl cutting
2d laser cutting
Lego
handicrafts



building

library

makerspace





Amsterdam

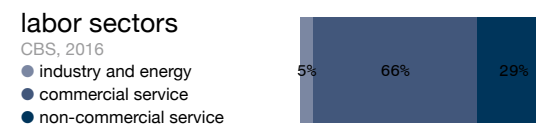
The Sloterveer location is part of a social multi-functional building. The library has two entrances, one main entrance and one through the adjacent cafe. The Amsterdam makerspaces have their own branding.

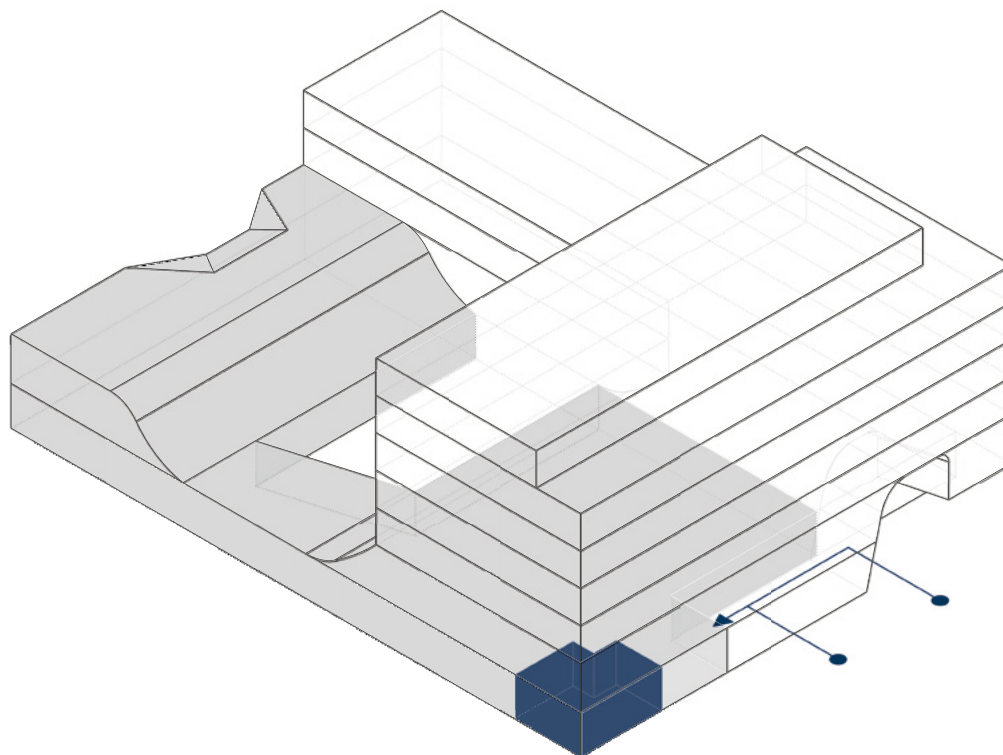
population	854.047
<small>CBS, 2018</small>	

area	219,49 km ²
<small>CBS, 2018</small>	

population per km ²	5.111
<small>CBS, 2017</small>	

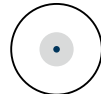
annual household income	€ 35.800
<small>CBS, 2014</small>	





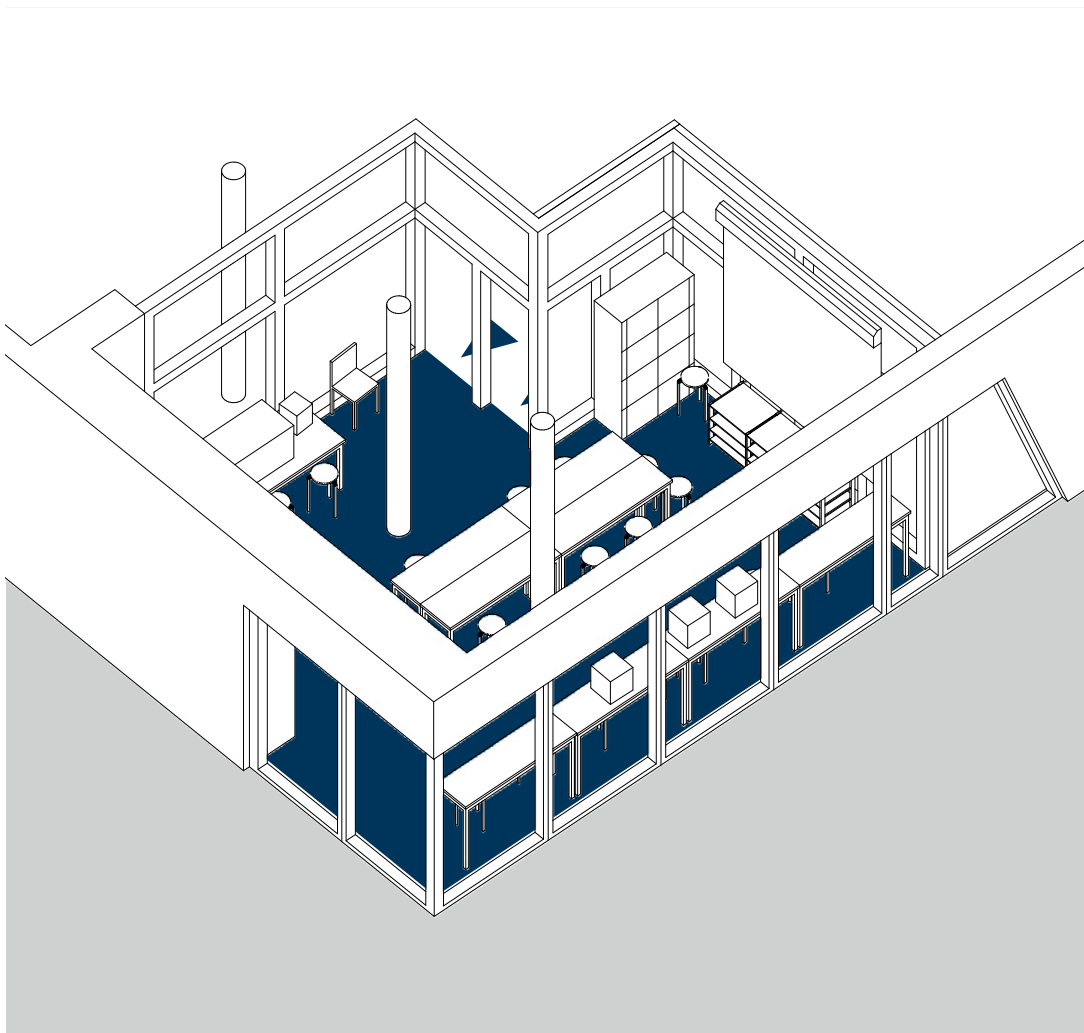
OBA Slottermeer

The library spans out all to the back on the ground floor. Some offices are in the back on the first floor. The corner visible from the street was initially designed for the reading cafe.

scale	L
space	enclosed
arts and crafts	●
twenty-first century skills	●
floor area	
○ building	8.009 m ²
● library	1.135 m ²
● makerspace	42 m ²

Maakplaats 021

This reading cafe was transformed into the makerspace. The visible connection to the urban surrounding is very important in attracting new visitors. The products made are shown in the window.



workplaces

15

floor area



● makerspace

42 m²

○ floor area per person

2,8 m²

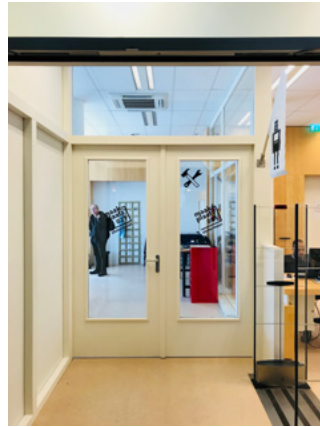
facilities

cooking and food		graphic design	●
creative writing		game design	
virtual reality		robotics	●
jewelry	●	3d drawing	
textiles	●	3d scanning	
music		3d printing	●
art		coding dojo	●
audio		vinyl cutting	
video	●	2d laser cutting	●
materials	●	Lego	
		handicrafts	●

building

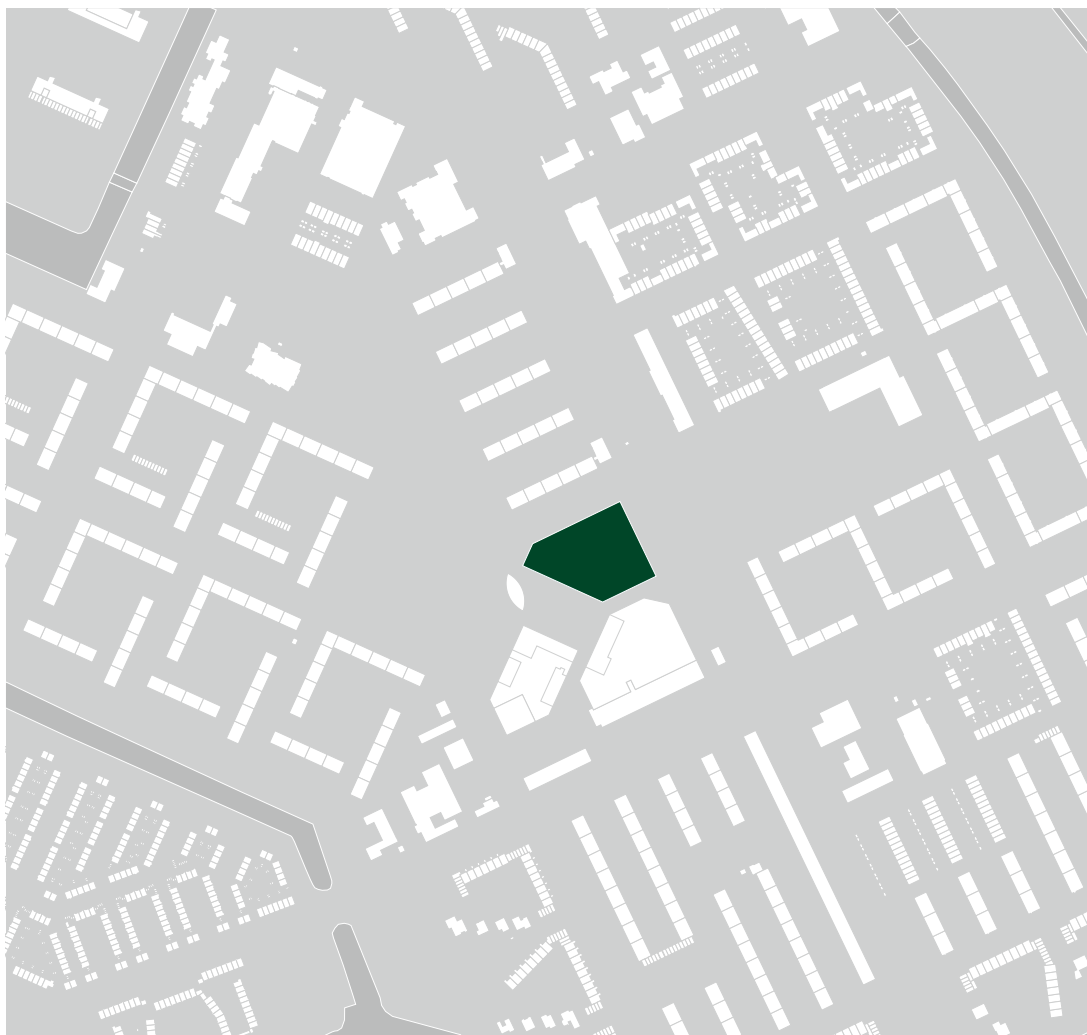


library



makerspace





Amsterdam

This large hybrid building contains housing, shops and social functions also hosts the library at the ground floor. An additional shop space is hired for the makerspace.

population 854.047

CBS, 2018

area 219,49 km²

CBS, 2018

population per km² 5.111

CBS, 2017

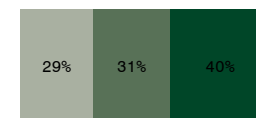
annual household income € 35.800

CBS, 2014

education level

CBS, 2011

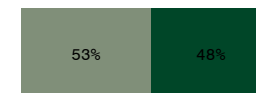
- low educated
- middle educated
- highly educated



background

CBS, 2017

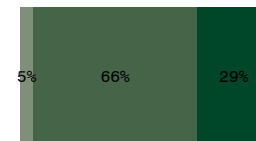
- migration background
- Dutch background

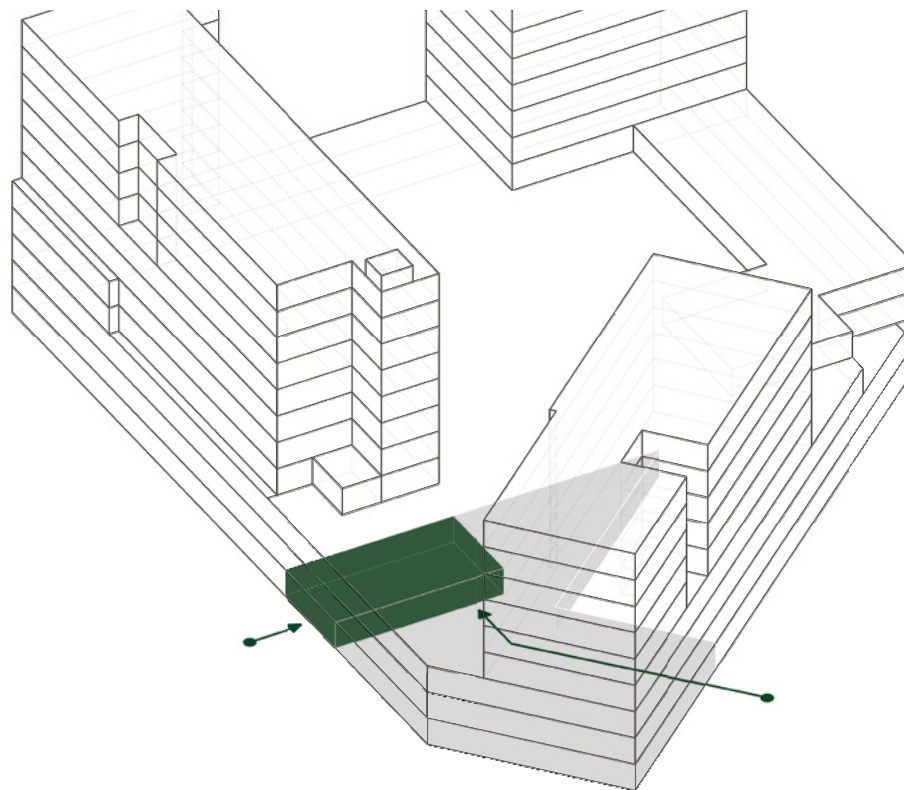


labor sectors

CBS, 2016

- agriculture, forestry and fishing
- industry and energy
- commercial service
- non-commercial service





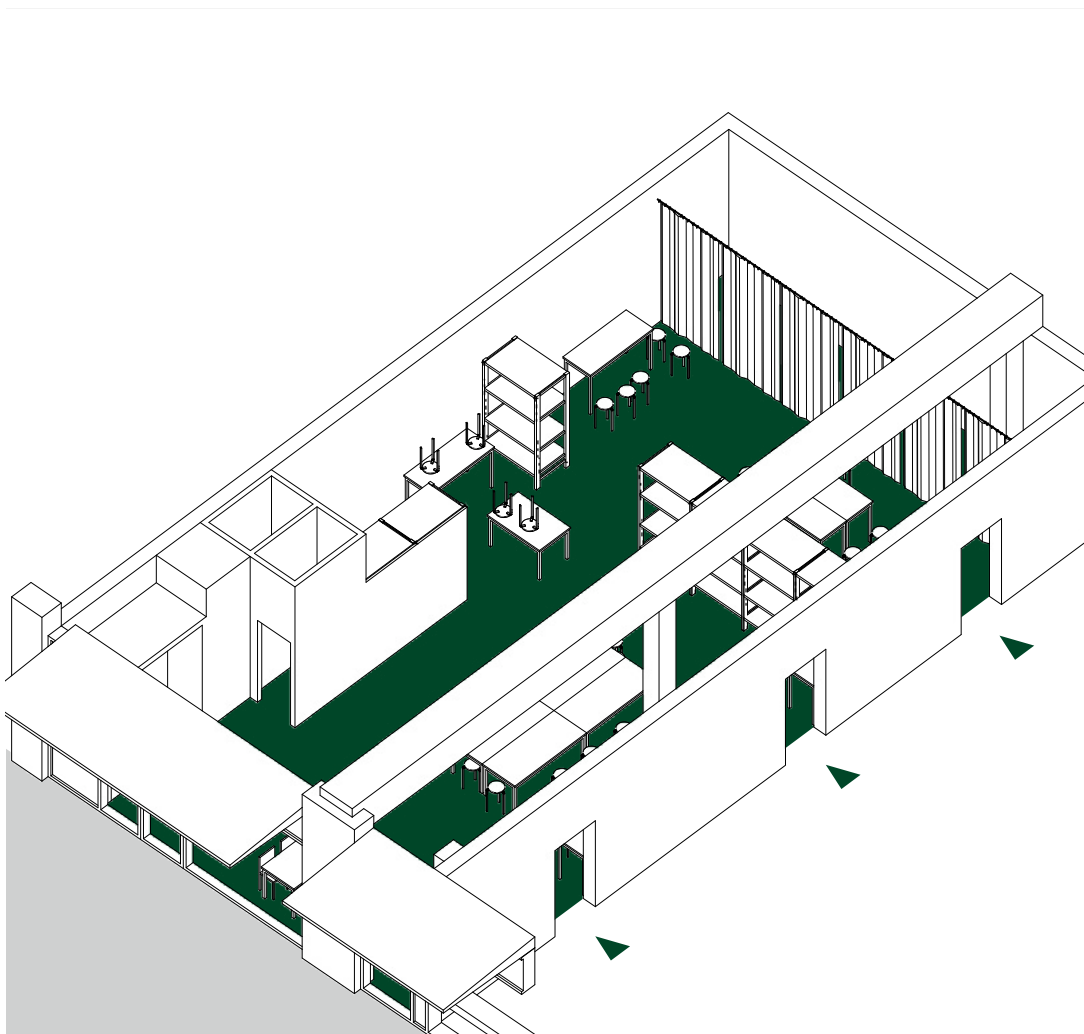
OBA Waterlandplein

The library and the makerspace are connected by three doors. The makerspace has its own entrance from the street and is therefore unique in this atlas of makerspaces.


scale	L
space	enclosed
arts and crafts	●
twenty-first century skills	●
floor area	
○ building	32.950 m ²
● library	950 m ²
● makerspace	174 m ²

Maakplaats 021

This makerspace is one of the few spaces that offers working with textiles, along with other 'digital' possibilities.



workplaces	30
------------	----

floor area	
------------	---

● makerspace	174 m ²
○ floor area per person	5,8 m ²

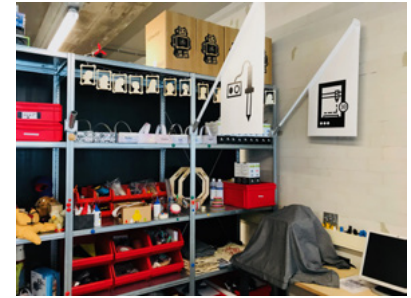
facilities

cooking and food	●	graphic design	●
creative writing	●	game design	●
virtual reality	●	robotics	●
jewelry	●	3d drawing	●
textiles	●	3d scanning	●
music	●	3d printing	●
art	●	coding dojo	●
audio	●	vinyl cutting	●
video	●	2d laser cutting	●
materials	●	Lego	●
		handicrafts	●

building

library

makerspace





Tiel

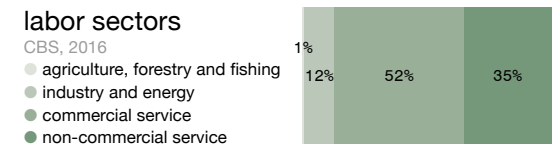
The brand new cultural building *Zindert*, houses cultural institutes, a theatre and the Tiel public library with the makerspace *Medialab*. The Medialab focuses mainly on digital skills.

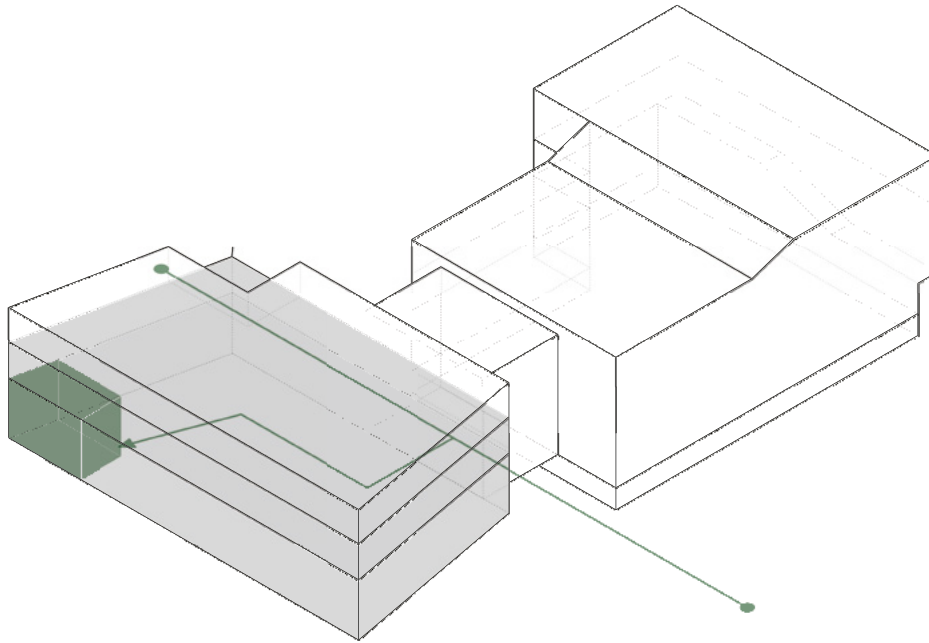
population 41.465
CBS, 2018

area 35,51 km²
CBS, 2018

population per km² 1.262
CBS, 2017

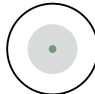
annual household income € 30.700
CBS, 2014

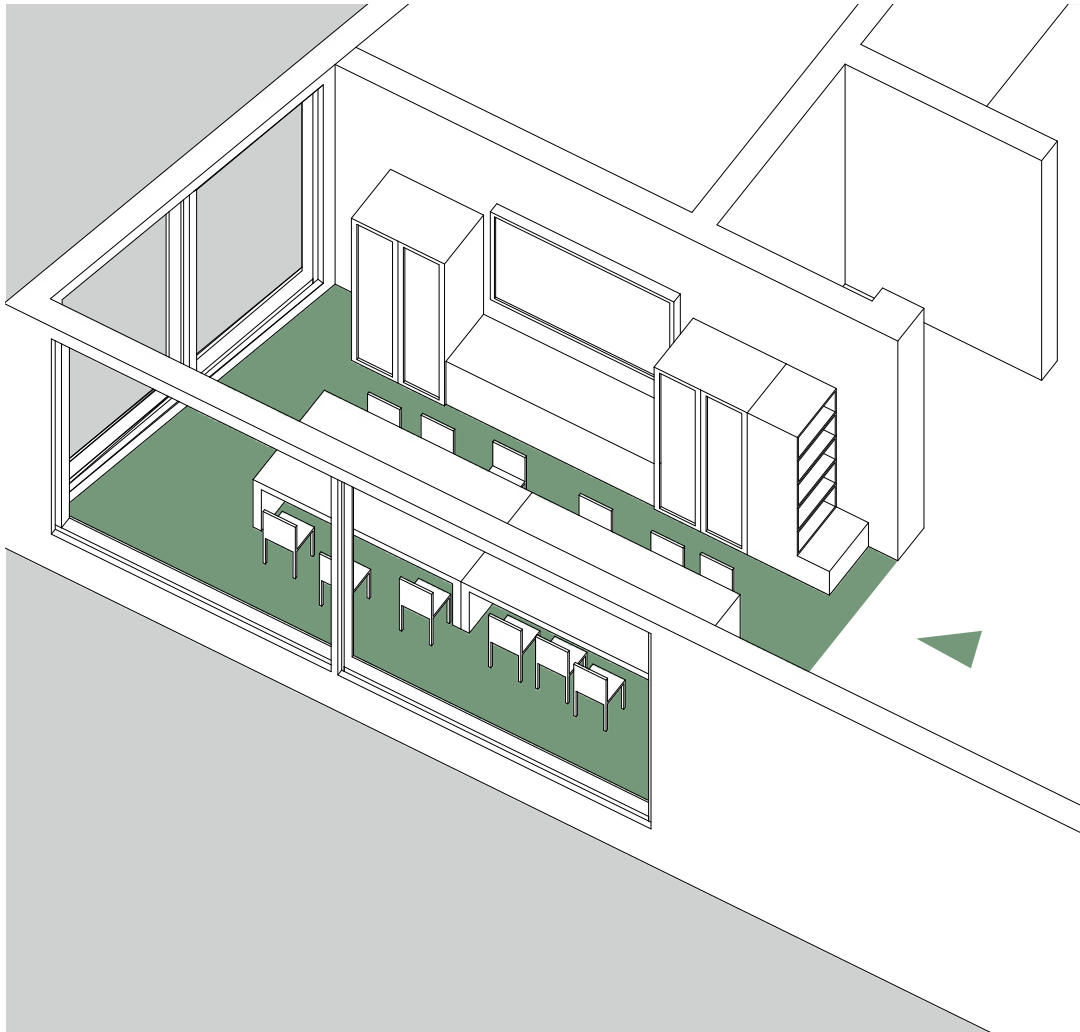




Bibliotheek Tiel

The Medialab is well located within the library on the ground floor and is also clearly visible from the outside. If there are many children present, the noise is very high. Therefore, the youth section is on the ground floor and most adult books are on the first floor.

scale	S
space	open plan
arts and crafts	
twenty-first century skills	●
floor area	
	<ul style="list-style-type: none"> ○ building ● library ● makerspace
	5.087 m ² 1.534 m ² 37 m ²



Medialab Tiel

The space is open, not very large and not suitable for other activities than those mentioned above. The Medialab is very popular and attracts many curious and visitors due to its visibility from the street. When the Medialab is closed, everything is stored in the cabinets (see-through with bars, so that those interested can see what has been made).

workplaces

12

floor area



● makerspace
○ floor area per person

37 m²
3,1 m²

facilities

cooking and food		graphic design	
creative writing	●	game design	
virtual reality		robotics	●
jewelry		3d drawing	●
textiles	●	3d scanning	
music		3d printing	●
art	●	coding dojo	●
audio		vinyl cutting	
video		2d laser cutting	
materials	●	Lego	●
		handicrafts	

building

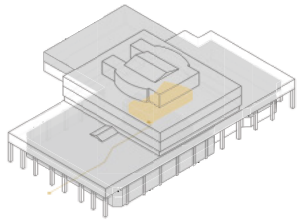
library

makerspace

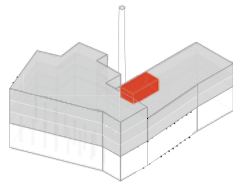


Building configurations

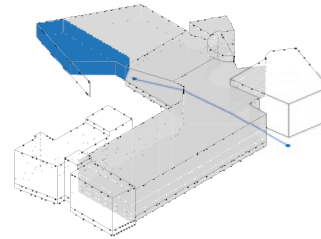
Tilburg



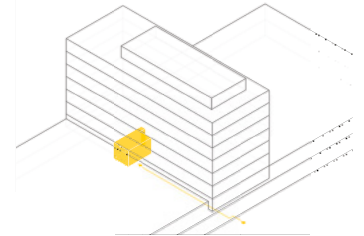
Veenendaal



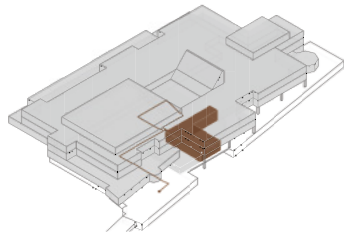
Breda



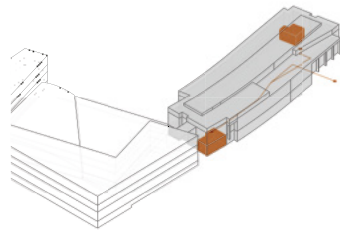
Eindhoven



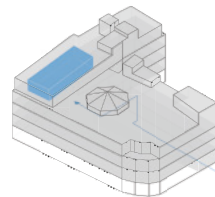
Middelburg



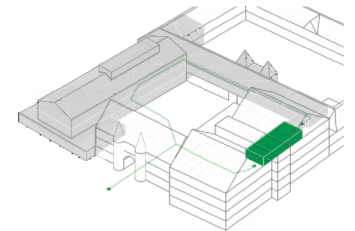
Apeldoorn



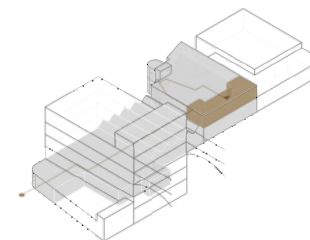
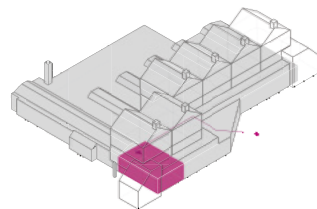
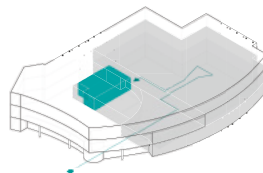
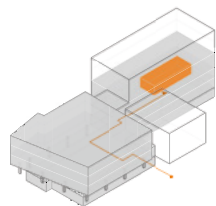
Utrecht



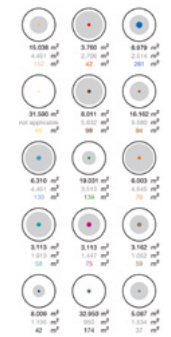
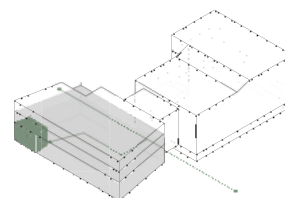
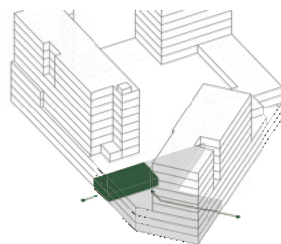
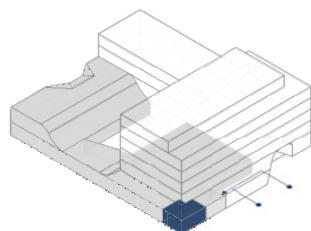
Leeuwarden



Zwolle	Steenwijk	's-Gravenzande	Amsterdam Reigersbos
--------	-----------	----------------	----------------------

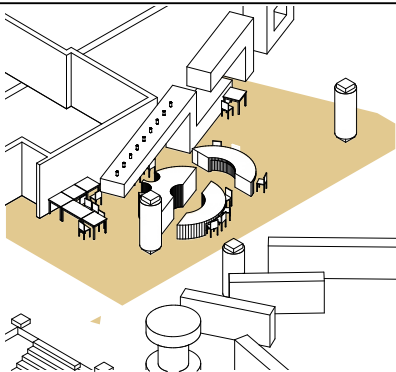


Amsterdam Slotermeer	Amsterdam Waterlandplein	Tiel	Surfaces Comparison
----------------------	--------------------------	------	---------------------

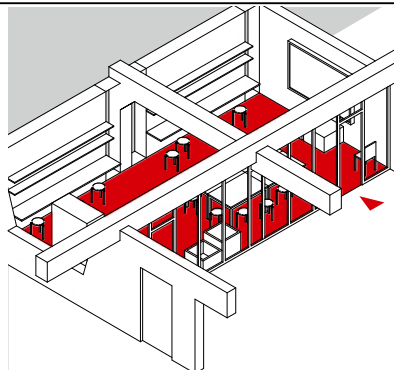


Makerspaces configurations

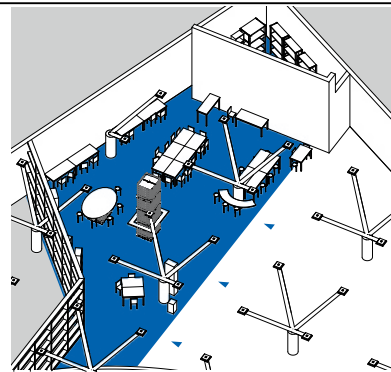
Tilburg



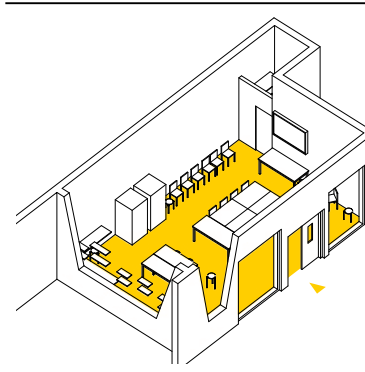
Veenendaal



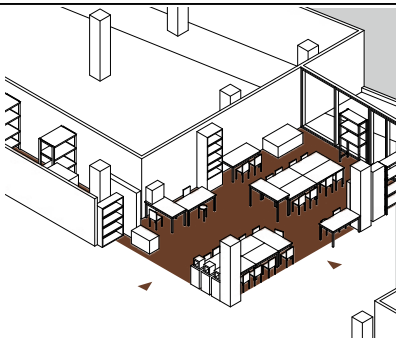
Breda



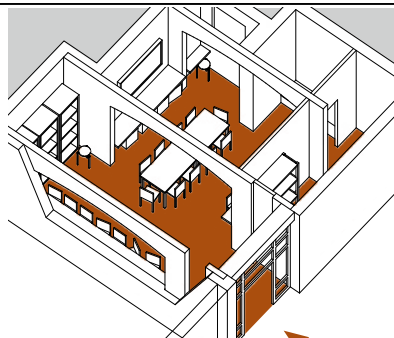
Eindhoven



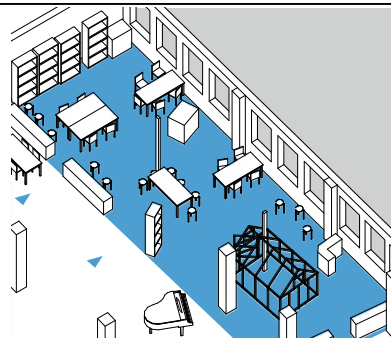
Middelburg



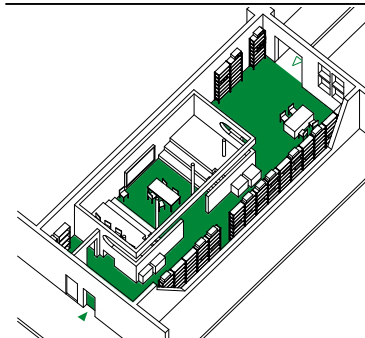
Apeldoorn



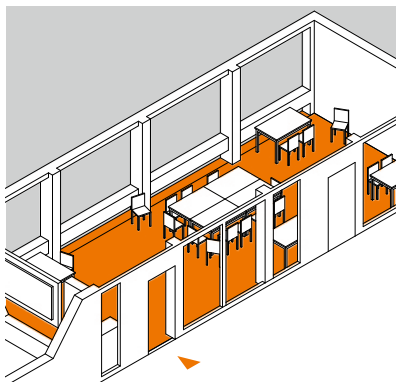
Utrecht



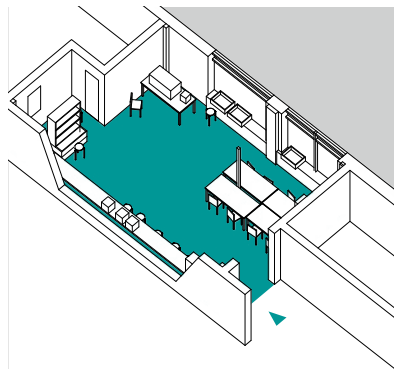
Leeuwarden



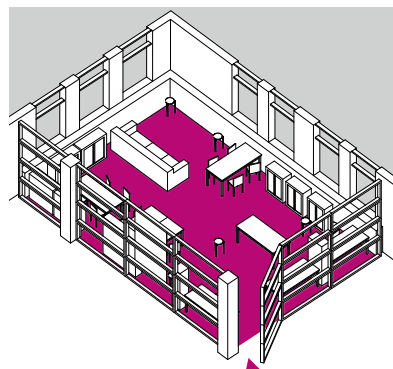
Zwolle



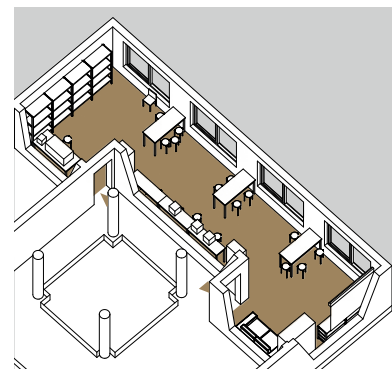
Steenwijk



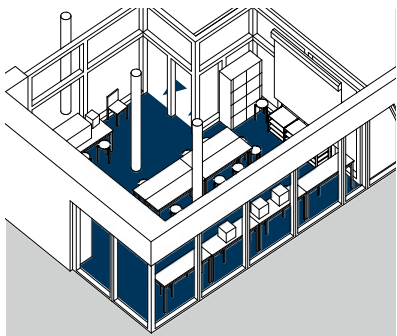
's-Gravenzande



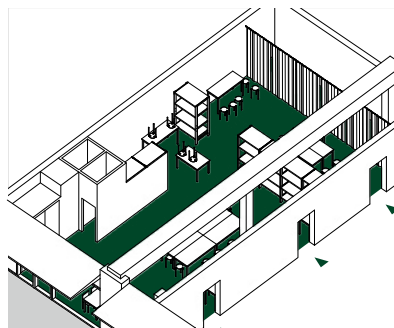
Amsterdam Reigersbos



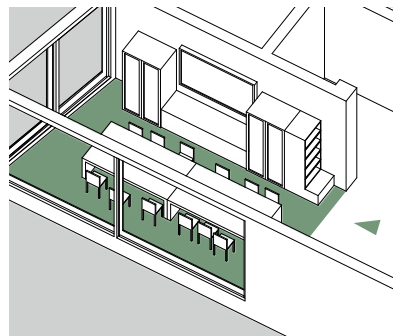
Amsterdam Slotermeer



Amsterdam Waterlandplein



Tiel



Surfaces Per Person

